

INTRODUCTION AND CHALLENGES

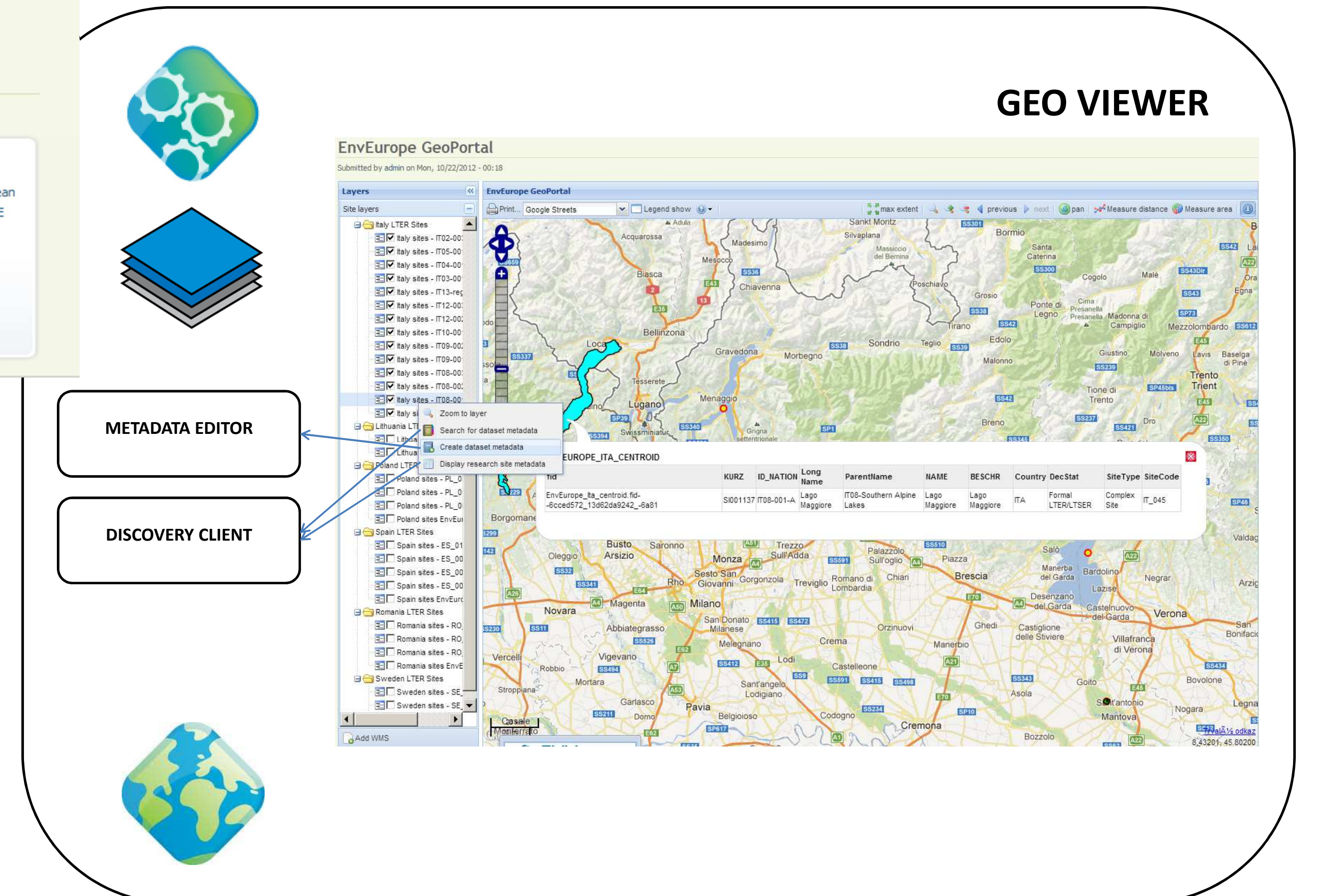
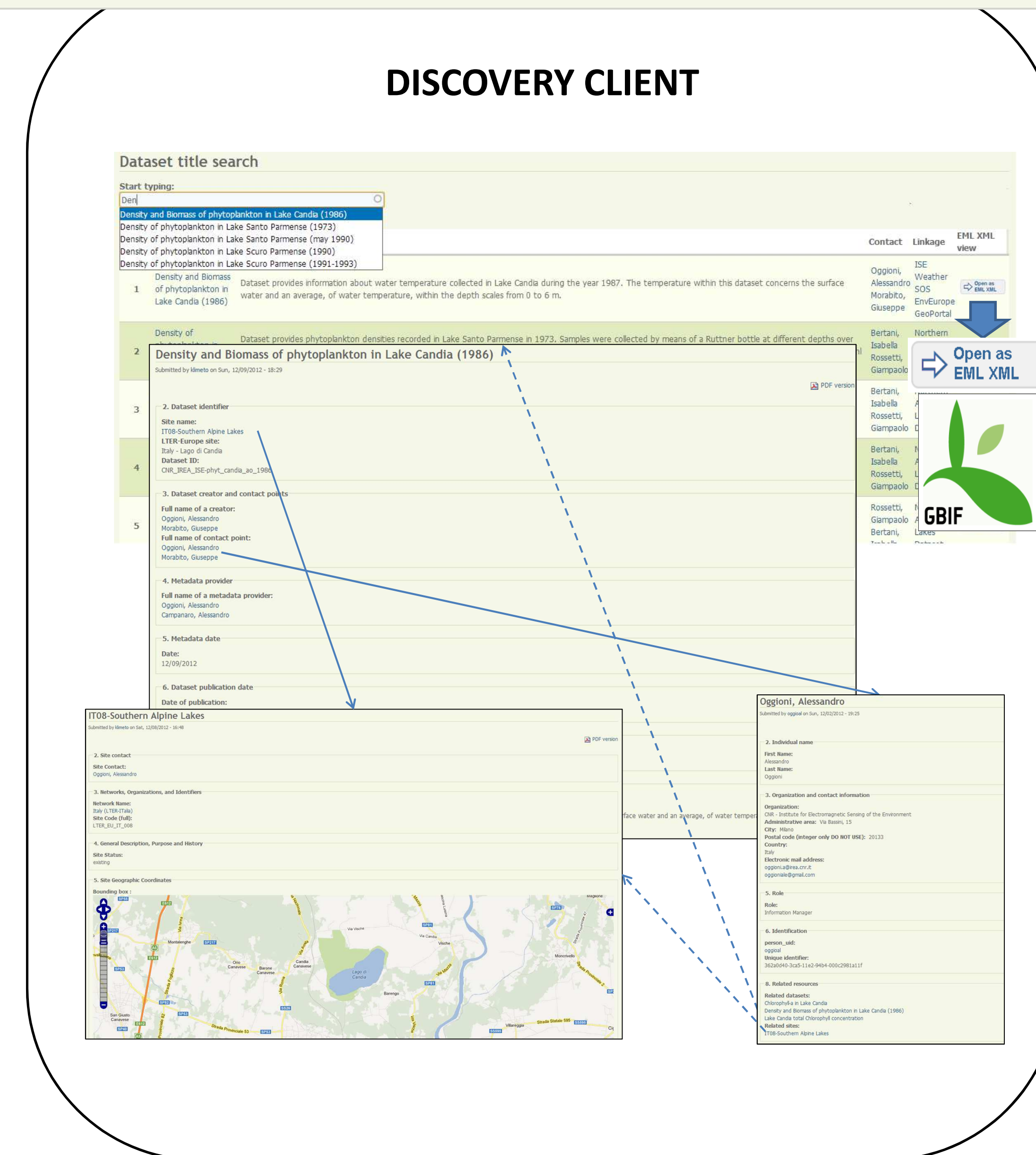
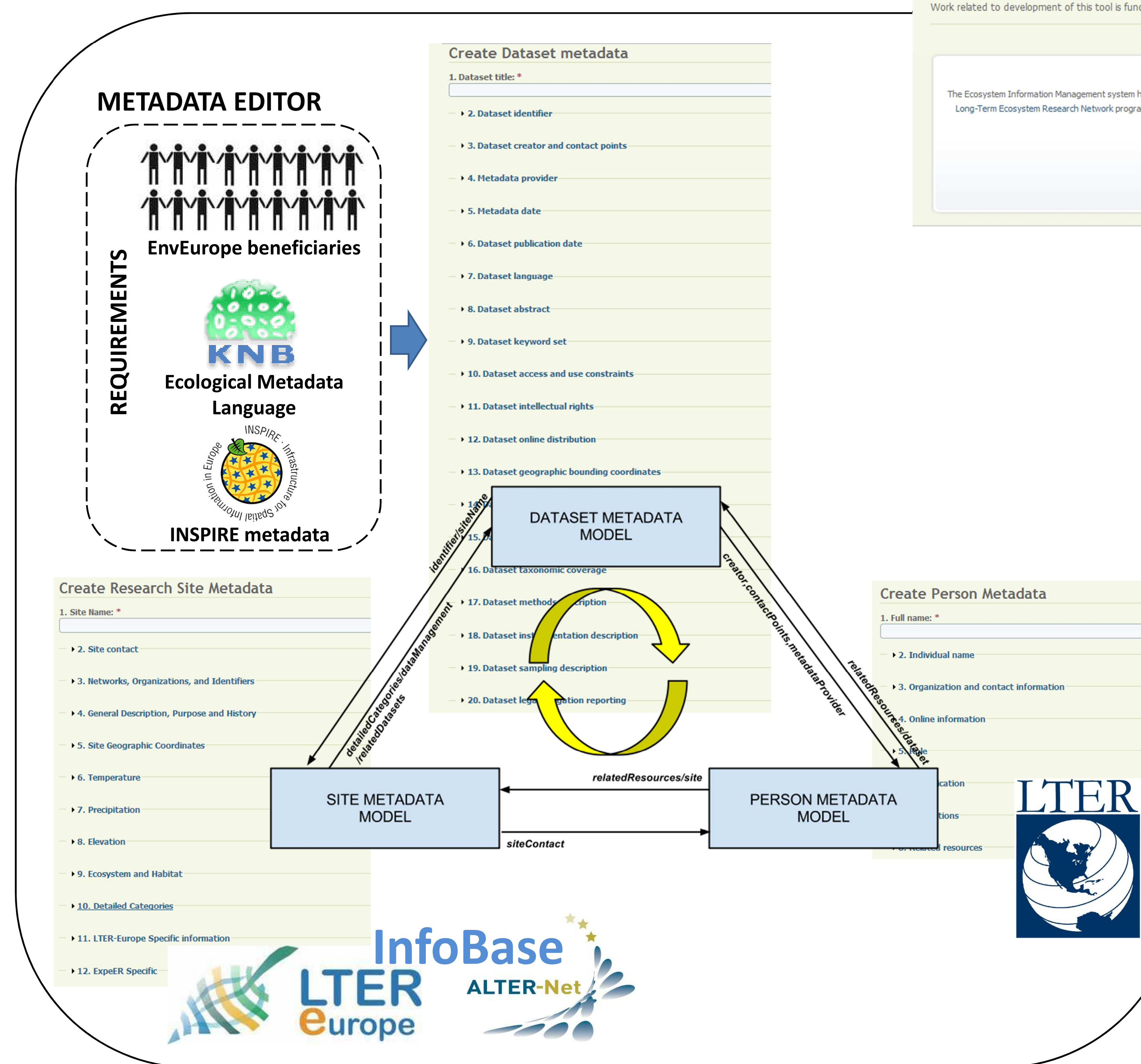
Long-term ecological (LTER) studies aim at detecting environmental changes and analysing its related drivers. In this respect LTER Europe provides a network of about 450 sites and platforms. However, data on various types of ecosystems and at a broad geographical scale is still not easily available in a common way. Managing data resulting from long-term observations is therefore one of the important tasks not only for an LTER site itself but also on the network level. Exchanging and sharing the information within a wider community is a crucial objective in the upcoming years. Due to the fragmented nature of long-term ecological research and monitoring (LTER) in Europe - and also on the global scale - information management has to face several challenges: distributed data sources, heterogeneous data models, heterogeneous data management solutions and the complex domain of ecosystem monitoring with regard to the resulting data. research and monitoring with regard to the resulting data. The action on management for long-term ecological data within the Life+ project EnvEurope (LIFE08 ENV/IT/000399) is aiming to provide tools and technologies to enhance the accessibility of data from different LTER sites.

ENVEUROPE DRUPAL ECOLOGICAL INFORMATION MANAGEMENT SYSTEM



RESULTS AND CONCLUSIONS

- 461 metadata records describing LTER Europe research sites migrated from InfoBase database (in total 678 records)
- 705 metadata records for related persons migrated (in total 1384 records)
- 144 metadata records for datasets collected so far
- Establishment of a common information management framework within the European ecosystem research area
- Pilot implementation of the common information system for the LTER-Europe research community
- Valuable environmental information available to other European information infrastructures as SEIS, Copernicus and INSPIRE



REFERENCES

Kliment, T., Oggioni, A. 2011. Bringing of eco-biological metadata to the INSPIRE meta information world. Peer-reviewed abstract. GI2011 symposium, Bad Schandau, Germany.

Kliment, T. et al. 2011. EnvEurope & INSPIRE – use case for collaboration within the EU projects and legislation driven initiatives. Peer-reviewed abstract. INSPIRE conference 2011, Edinburgh, Scotland.

Kliment, T., et al. 2012. Report on the metadata model for datasets (PD_A1.1.2b_Kliment_et_al_MD_Specification – Rev.2. Final).

Peterseil, J., et al. 2012. Report on metadata model for sites (PD_A1.1.2a_Peterseil_et_al_SiteLevelMetadataModel – Rev.2).

Project information and contact:
<http://www.enveurope.eu>
enveurope@ismar.cnr.it

EnvEurope DEIMS web address and contact:
<http://deims.enveurope.eu>
enveurope.deims@gmail.com

Project LIFE08 ENV/IT/000399 co-financed
 by the European Commission Programme
 LIFE+ (2010-2013)

