



Fig. 1 Confluence of the rivers Indus and Zaskar, India. (courtesy: Ravindran Rajan)

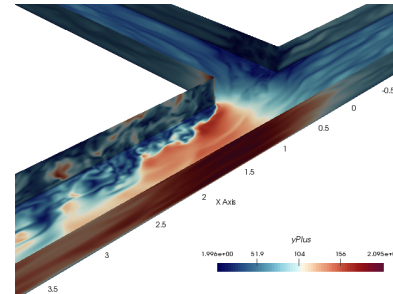


Fig. 4 Dimensionless distance to the wall

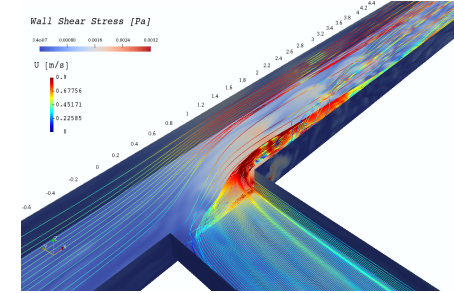
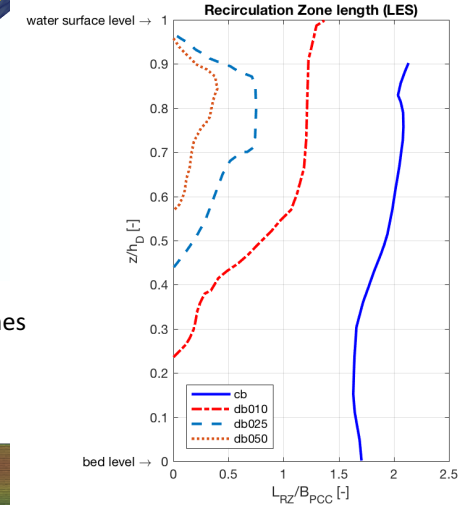
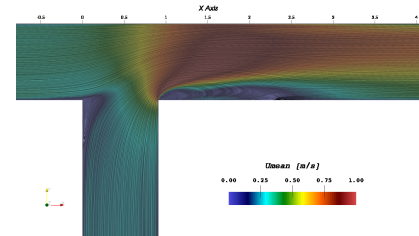


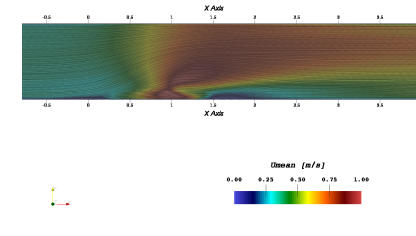
Fig. 5 Wall shear stress and velocity streamlines for the case  $\Delta z_T/h_d = 0.25$



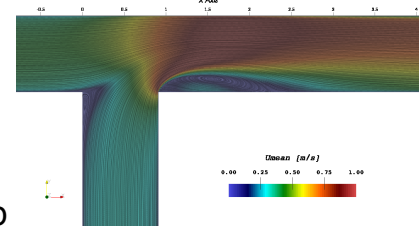
concordant case, near the bed



discordance case, near the bed



concordant case, near the water surface



concordant case, near the water surface

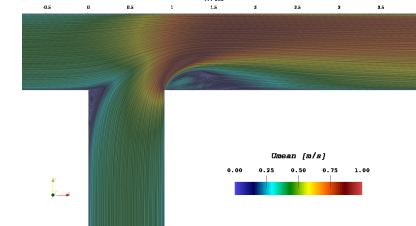


Fig. 6 Mean velocity over 500 s

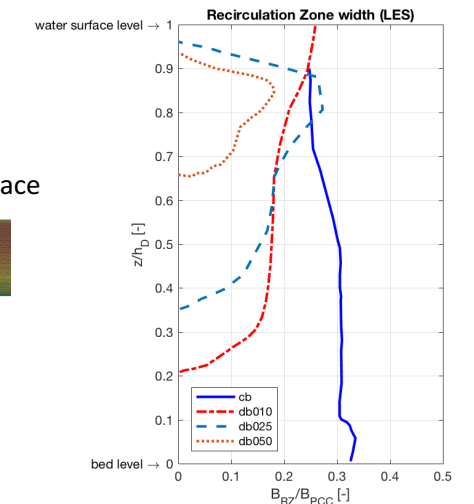


Fig. 7 Recirculation zone length and maximal variation throughout the flow depth

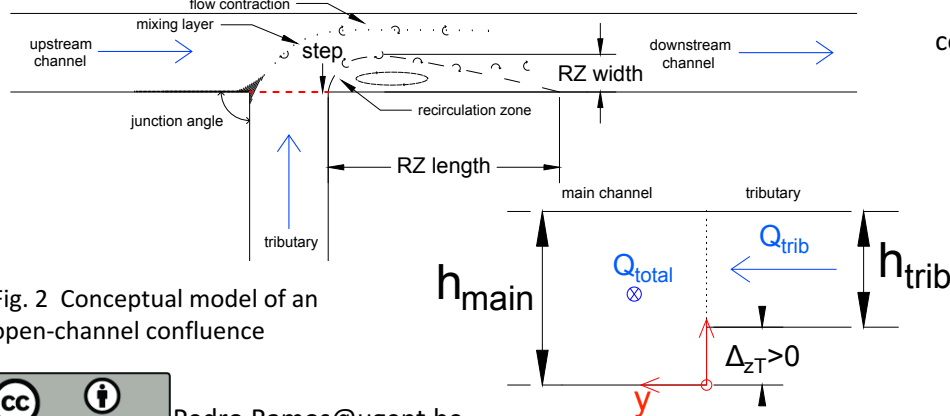


Fig. 2 Conceptual model of an open-channel confluence