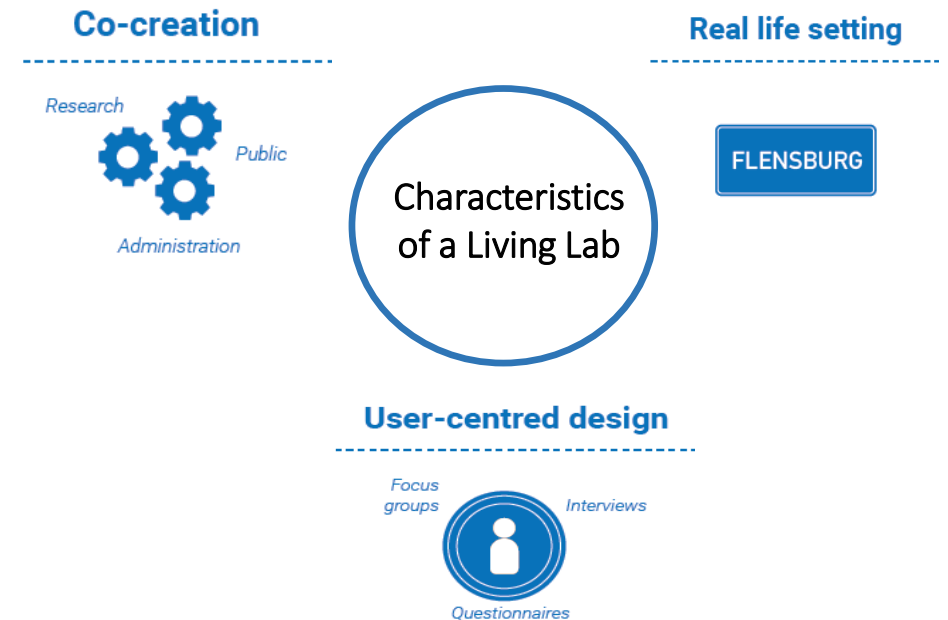


How to co-produce climate services in collaboration with users? Insights from a story map development process.

Bente Vollstedt, Jana Koerth, Athanasios Vafeidis
Coastal Risks and Sea-Level Rise Research Group, Department of Geography, Kiel University

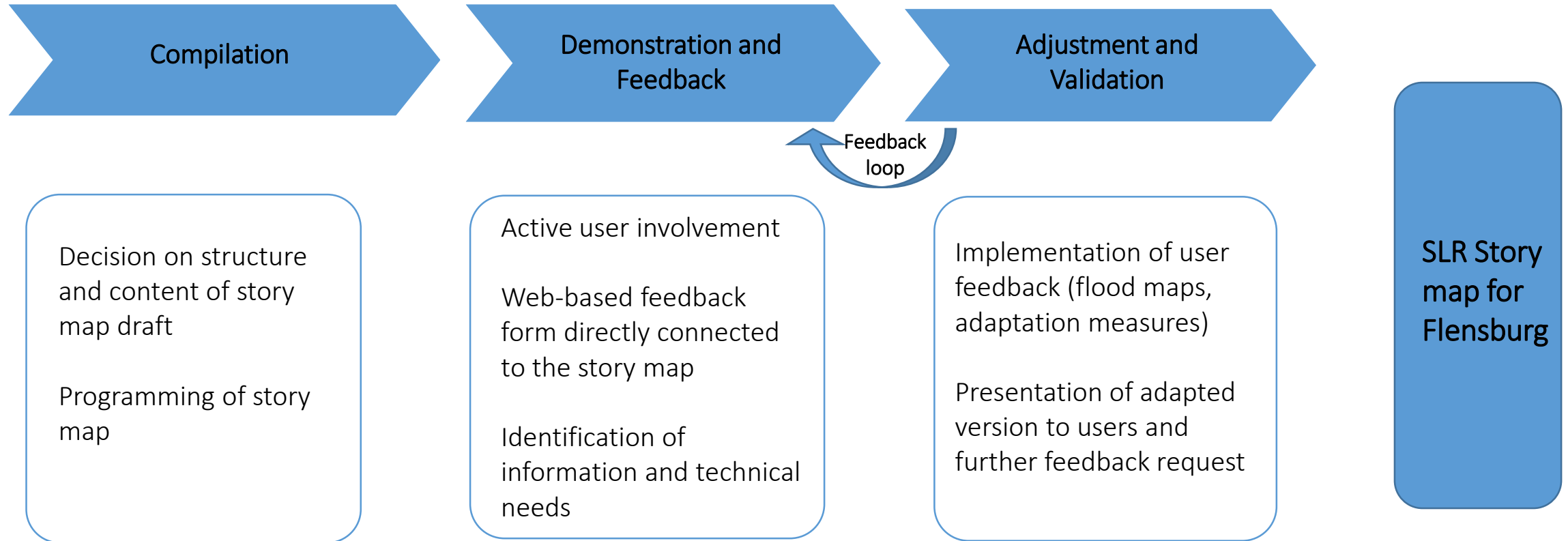
- Co-producing a story map as a climate service to inform about sea level rise (SLR) and its impacts
- Increasing the usability and relevance of the climate service by identifying user needs and actual user involvement (e.g. general public)
- Showing the potential of story maps to visualize scientific information and communicate local climate change impacts
- Applying the Living Lab approach for user involvement and production process



- City of Flensburg (Germany) vulnerable to sea-level rise due to its location at the Baltic Sea coast in the Flensburg fjord
- Flensburg experiences regular storm surge flooding, especially the old town
- Story map to raise awareness and inform about SLR and its impacts among the general public in Flensburg

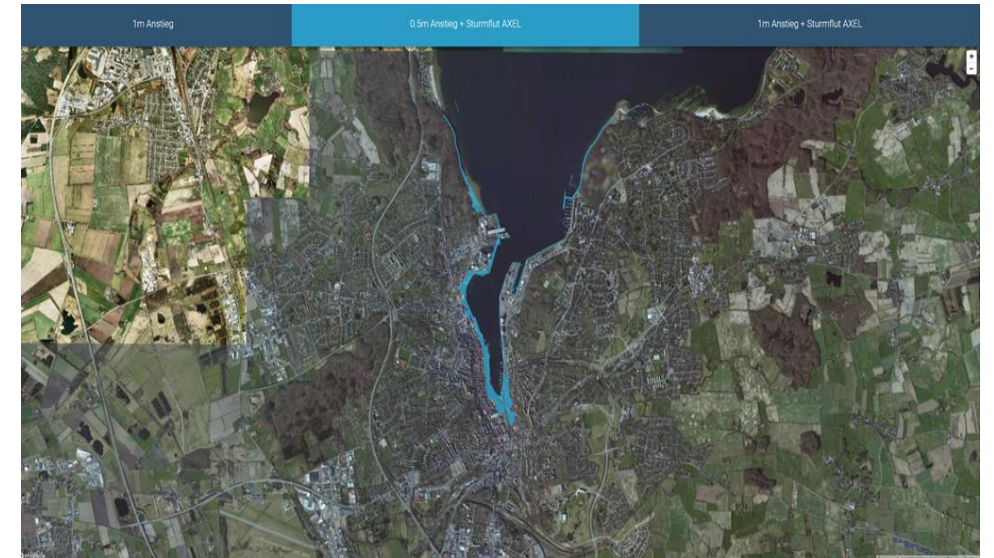
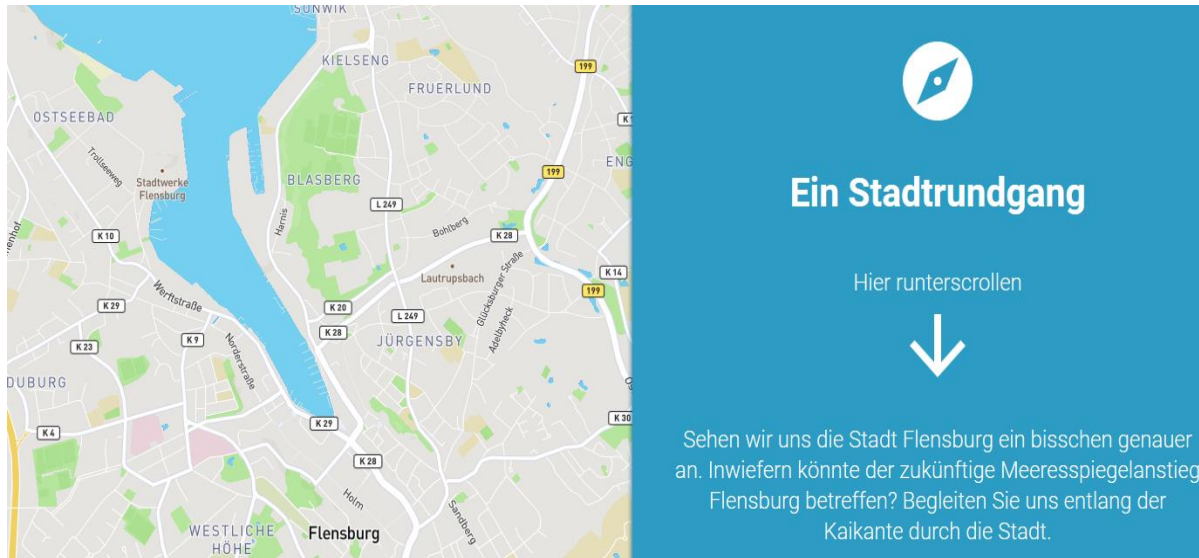


Story Map Co-Production Phases



Story Map and its Components

<http://meeresspiegelanstieg-in-flensburg.info/>



➔ Collaboration with users helped us to identify user needs and to adjust the climate service
Components were added to the story map based on user feedback
Further research is needed to explore the actual use of the story map as a climate service leading to adaptation action