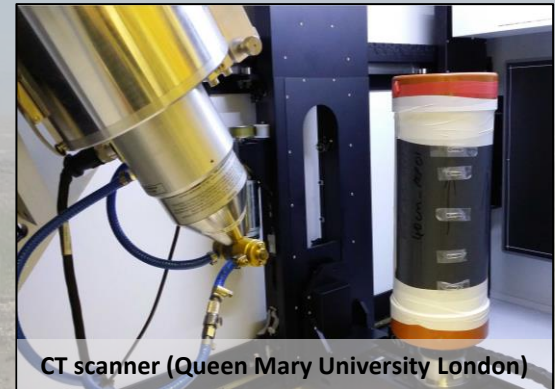


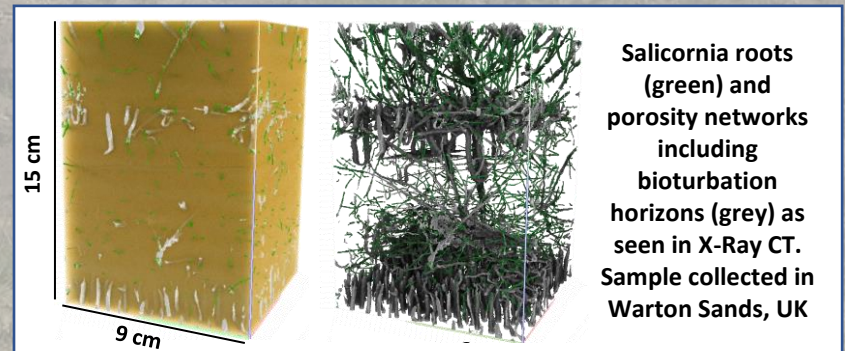
# Effect of belowground structure on coastal wetland functioning and erosion resistance using X-Ray Computed Tomography

Clementine Chirol, Helen Brooks, Simon Carr, Elizabeth Christie, Ben Evans  
Jason Lynch, Iris Möller, Kate Royse, Kate Spencer, Tom Spencer

**Rationale:** UK-RESIST aims to improve our understanding of what makes a marsh healthy and resistant to eroding forces. This property and other key ecosystem services such as carbon storage and water treatment are highly dependent on subsurface structures and processes. **Of particular interest is the 3D subsurface organisation of pores and roots.**



**Method: X-Ray Computed Tomography (X-Ray CT)** combines the penetrating capacity of X-rays with 3D-volume reconstruction to observe the internal structure of objects in a non-destructive manner. Frequently used in agricultural science, it also offers an unprecedented opportunity to observe the more diverse subsurface environment of a saltmarsh.



## Study sites: comparison of different sediment types and plant species

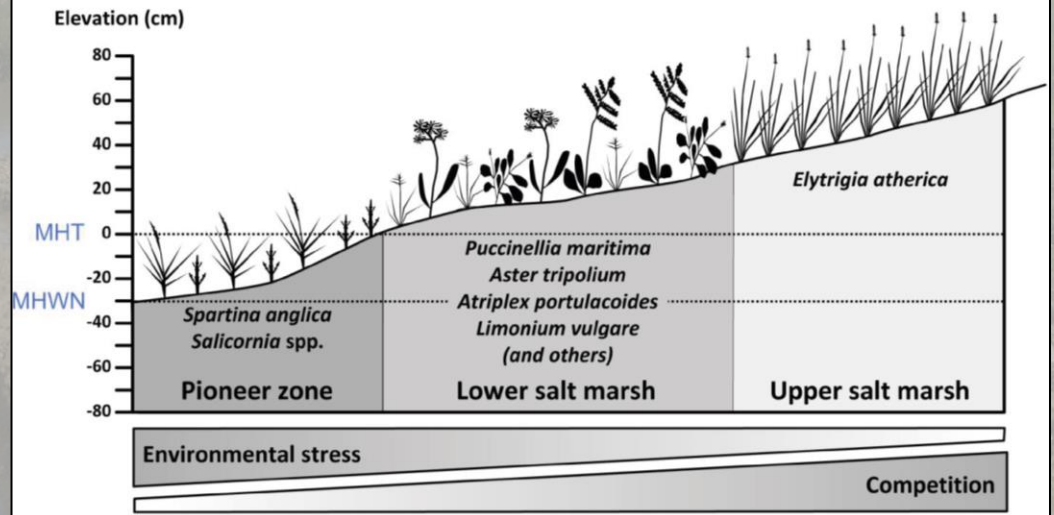


### Tillingham

We consider 2 sediment types (sandy at Warton Sands, muddy at Tillingham) and 3 ground cover types (bare ground, *Spartina*, *Salicornia*, *Puccinellia*). 3 replicate sediment cores (15cm deep, 15cm diameter) were collected per location in January 2019 and scanned at a 62.5 micron resolution.



### Warton Sands



Modified from Rebelstein (2018)

## Visualization of pores and organics

Using recent methods from medical and agricultural science, we developed a workflow that uses the X-Ray attenuation contrasts (~relative densities) and shape detection algorithms to distinguish the pores, roots and other organics from the sediment matrix. Differences in sediment types and vegetation cover have a direct impact on subsurface structures. We will draw links between these different structures and differences in marsh functioning.

