

# Shrub clearing as Active Management strategy to control land abandonment in the Central Spanish Pyrenees: The effects and the limits

Khorchani Makki<sup>1</sup> (\*), Nadal-Romero Estela<sup>1</sup>, Lasanta Teodoro<sup>1</sup> and Tague Christina<sup>2</sup>

1. Instituto Pirenaico de Ecología (IPE-CSIC), Spain

2. Bren School of Environmental Science and Management, University of California, USA

**HS2.1.1: Mountain hydrology under global change: monitoring, modelling and adaptation**

# Background

- ❖ In the Mediterranean basin, land abandonment has been one of the most important land use and land cover changes during the last decades (Weisteiner et al., 2011).
- ❖ More than 80% of cultivated land in the Spanish Pyrenees has been abandoned (Lasanta, 1988)
- ❖ The first effect of land abandonment is the subsequent natural revegetation process in these lands that have important consequences on water resources and soils (García-Ruiz and Lana-Renault, 2011; de Baets et al., 2013; Nadal-Romero et al., 2016).
- ❖ The revegetation process after land abandonment affects evapotranspiration, throughfall, infiltration, soil storage and runoff processes, with marked changes in the main components of the hydrological cycle (Llorens and Domingo, 2007; Beguería et al., 2003; López-Moreno et al., 2011).
- ❖ Shrub clearing of abandoned cropland could be an efficient management strategy to deal with abandoned cropland areas (Khorchani et al. 2020).
- ❖ The Regional Hydro-Ecological Simulation System (RHESys) (Tague and Band, 2004) is one of the numerous models widely used during the last years to assess the effects of land use changes on hydrological dynamics (Godsey et al., 2014; Bart et al., 2016; Peng et al., 2016).

1

We used the Regional Hydro-Ecological Simulation System RHESys to simulate the effects of forest succession (FS) and shrub clearing (SC) on the hydrological dynamics of a Spanish Pyrenees watershed (Fig 1).

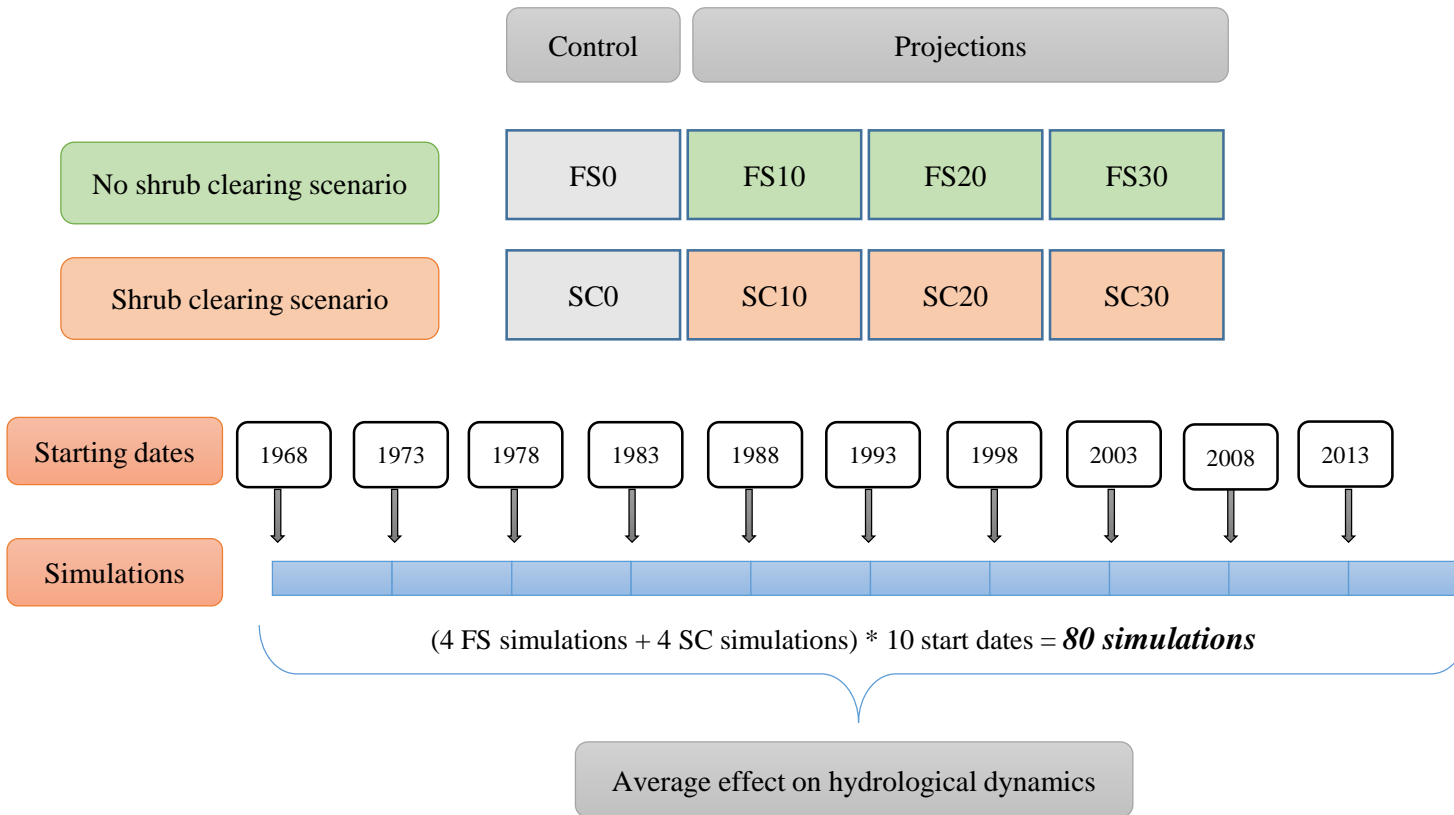


Fig 2. Workflow of the study

3

FS0 current situation of forest succession. FS10,FS20 and FS30 projections of FS0 accounting for 10, 20 and 30 more years of forest succession. SC0,SC10,SC20 and SC30 their correspondent shrub clearing management plans (Fig 2).

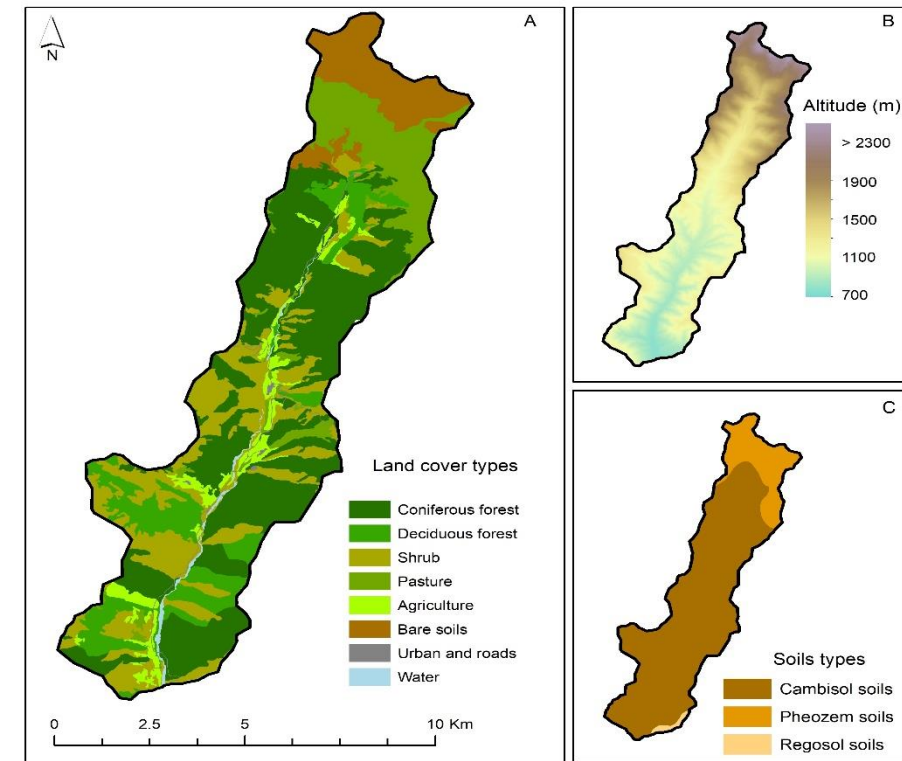


Fig 1. The Aísa watershed

2

- We compare between management (shrub clearing, SC) and the no management (forest succession, FS) of abandoned cropland areas (Fig 2).
- We vary the start dates of the simulations to account for climate variability (Fig 2).

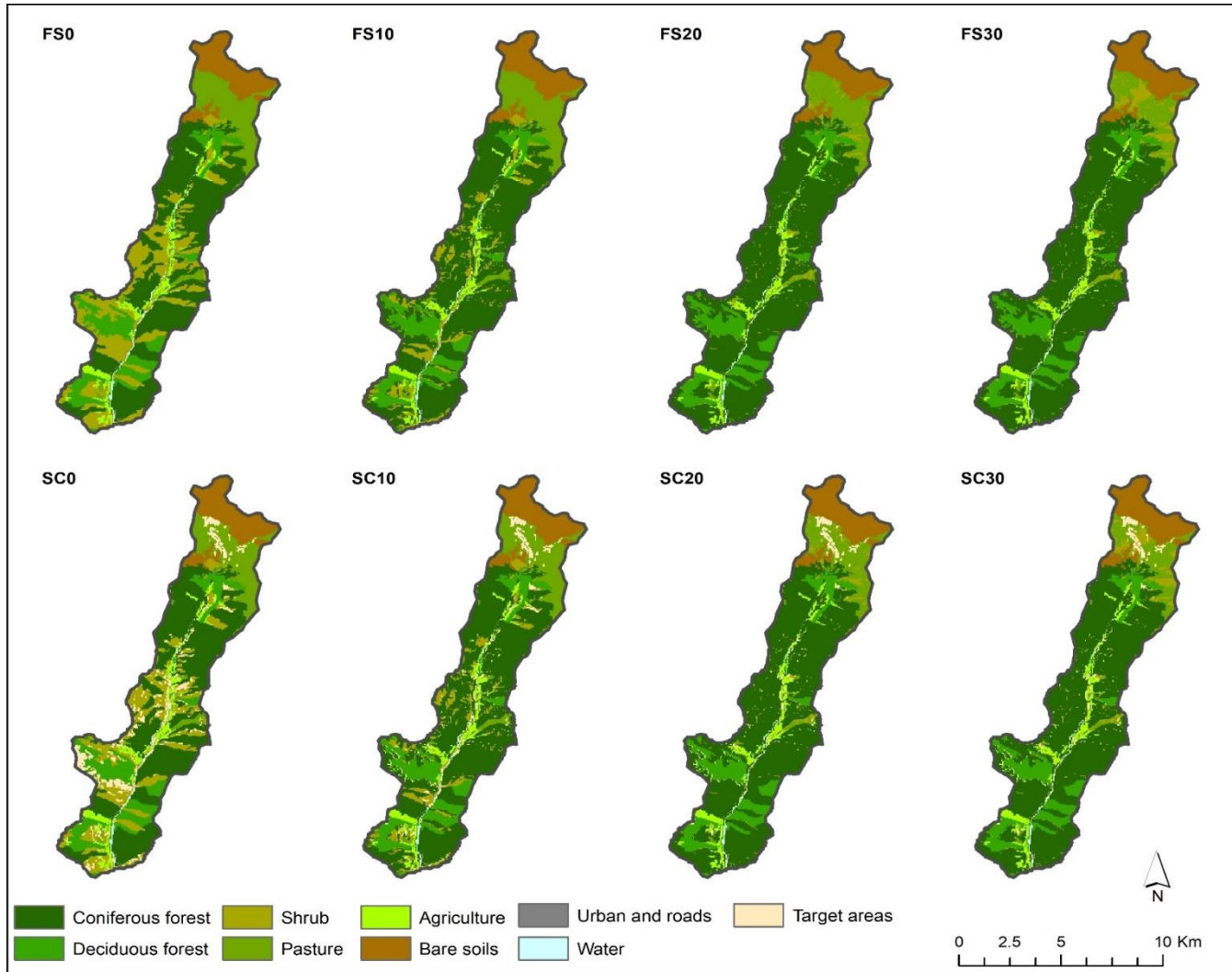


Fig 3 Forest succession projections and their correspondent shrub clearing plans

Tab 1. Type conversion as results of forest succession

	Type conversion (%)		
Projections	FS10	FS20	FS30
Shrub to forest	60.7	98.9	99.8
Grass to shrub	0.0	19.6	35.7

- 60.7% of the FS0 shrubs could be converted to forest within 10 years of forest succession. 99.8% Within 30 years of no management strategy (Tab 1).

Tab 2. Correspondent target area of each forest succession projection

	Forest succession			
	FS0	FS10	FS20	FS30
Target area (%)	7.5	3.7	2.9	2.9
Reduction from FS0 (%)		-61.1	-72	-72

- Type conversion as result of forest succession will limit target areas for shrub clearing management.
- Within 30 of forest succession only 2.9% of the study area would be available for shrub clearing (Tab 2).

6

- Under SC0, shrub clearing would increase annual streamflow by 6.1% and decrease annual evapotranspiration by 6.1% during the first five years following management (Tab 3).
- The target area for shrub clearing will decrease with forest succession. Meanwhile the efficiency of shrub clearing on hydrologic dynamics will decline as well (Tab 3).

Tab 3. Type conversion as results of forest succession

Year	Streamflow (%)	Evapotranspiration (%)
SC0	6.1	-6.1
SC10	3.2	-2.7
SC20	1.9	-1.1
SC30	2.1	-1.3

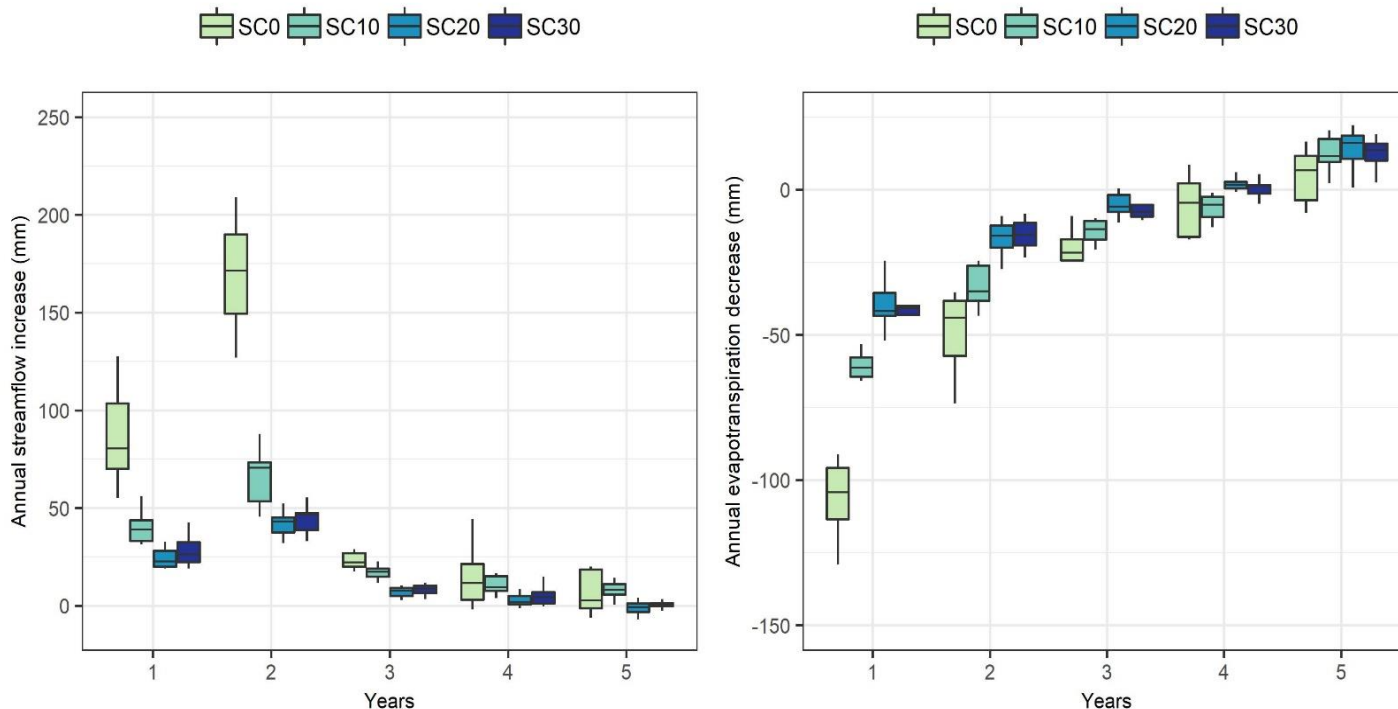


Fig 4. Boxplots of the resultant effect of shrub clearing on streamflow and evapotranspiration under the different management projections

7

- The impact of shrub clearing would drastically change with forest succession over the first five years following management (Fig 4).
- The highest changes to hydrological dynamics would strongly decline with forest succession (Fig 4).

# References

- ❖ Beguería, S., López-Moreno, J.I., Lorente, A., Seeger, M., García-Ruiz, J.M., 2003. Assessing the effect of climate oscillations and land-use changes on streamflow in the Central Spanish Pyrenees. *Ambio* 32, 283–286.
- ❖ Bart, R.R., Tague, C.L., Moritz, M.A., 2016. Effect of tree-to-shrub type conversion in lower montane forests of the Sierra Nevada (USA) on Streamflow. *PLoS One* 11 (8), e0161805.
- ❖ De Baets, S., Meersmans, J., Vanacker, V., Quine, T.A., Van Oost, K., 2013. Spatial variability and change in soil organic carbon stocks in response to recovery following land abandonment and erosion in mountainous drylands. *Soil Use Manag.* 29, 65–76.
- ❖ García-Ruiz, J.M., Lana-Renault, N., 2011. Hydrological and erosive consequences of farmland abandonment in Europe, with special reference to the Mediterranean region - a review. *Agric. Ecosyst. Environ.* 140 (3–4), 317–338.
- ❖ Godsey, S.E., Kirchner, J.W., Tague, C.L., 2014. Effects of changes in winter snowpacks on summer low flows: case studies in the Sierra Nevada, California, USA. *Hydrol. Process.* 28 (19), 5048–5064
- ❖ Khorchani, M., Nadal-Romero, E., Tague, C., Lasanta, T., Zabalza, J., Lana-Renault, N., Domínguez-Castro, F., Choate, J., 2020. Effects of active and passive land use management after cropland abandonment on water and vegetation dynamics in the Central Spanish Pyrenees. *Sci. Total Environ.* 717.
- ❖ Lasanta, T., 1988. The process of desertion of cultivated areas in the Central Spanish Pyrenees. *Pirineos* 132, 15-36
- ❖ Llorens, P., Domingo, F., 2007. Rainfall partitioning by vegetation under Mediterranean conditions. A review of studies in Europe. *J. Hydrol.* 335, 37-54.
- ❖ López-Moreno, J.I., Vicente-Serrano, S.M., Morán-Tejeda, E., Zabalza, J., Lorenzo-Lacruz, J., García-Ruiz, J.M., 2011. Impact of climate evolution and land use changes on water yield in the Ebro Basin. *Hydrol. Earth Syst. Sci.* 15, 311-322.
- ❖ Nadal-Romero, E., Cammeraat, E., Pérez-Cardiel, E., Lasanta, T., 2016. How do soil organic carbon stocks change after cropland abandonment in Mediterranean humid mountain areas? *Sci. Total Environ.* 566-567, 741-752.
- ❖ Peng, H., Tague, C., Jia, Y., 2016. Evaluating the eco-hydrological impacts of reforestation in the Loess Plateau, China using an eco-hydrological model. *Ecohydrology* 9, 498–513
- ❖ Tague, C.L., Band, L.E., 2004. RHESSys: regional hydro-ecologic simulation system — an object- oriented approach to spatially distributed modeling of carbon, water, and nutrient cycling. *Earth Interact.* 8 (19).
- ❖ Weissteiner, C., Boschetti, M., Böttcher, K., Carrera, P., Bordogna, G., Brivio, P.A., 2011. Spatial explicit assessment of rural land abandonment in the Mediterranean area. *Glob. Planet. Change* 79(1-2), 20-36.