

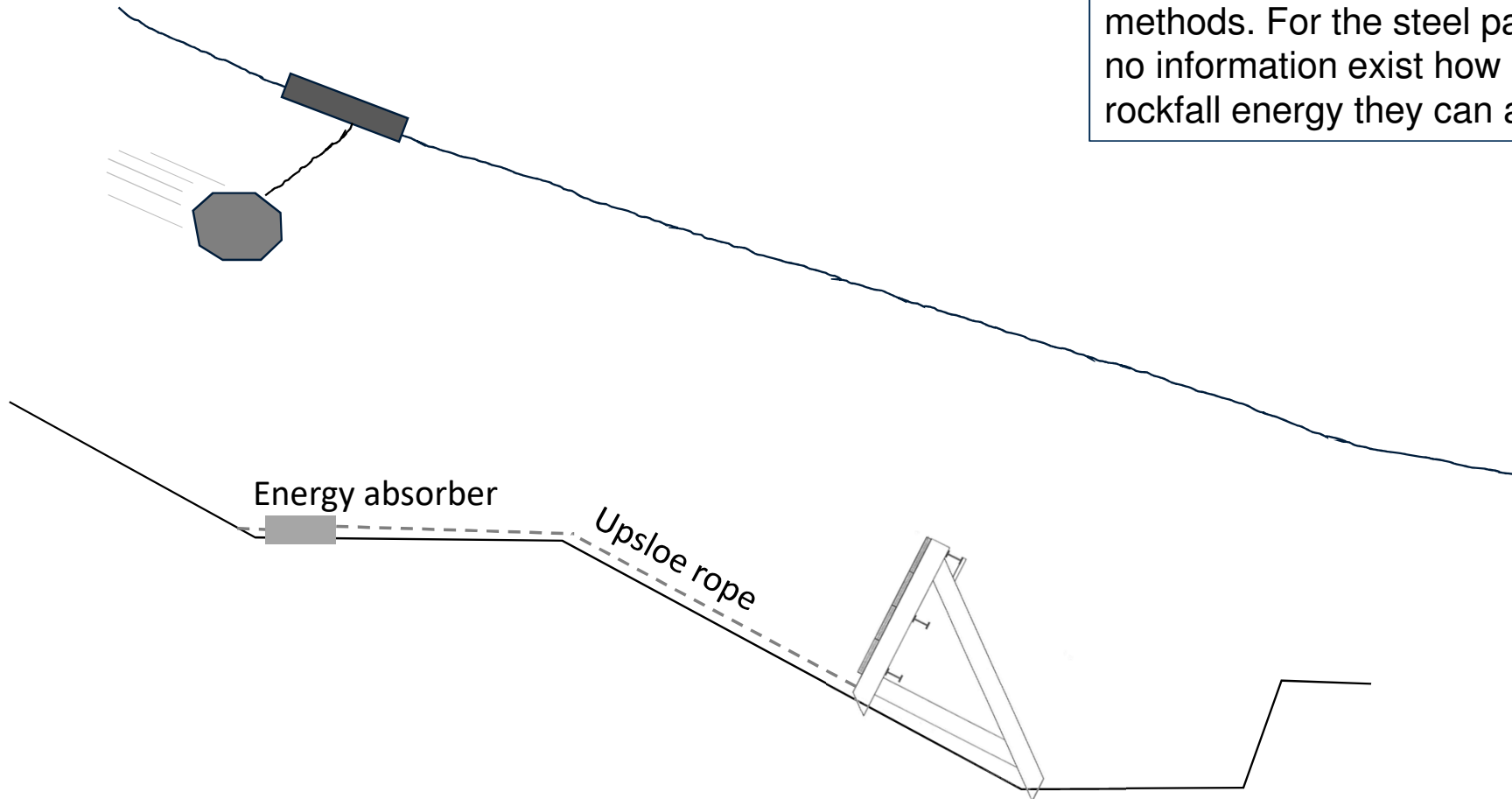


Full scale field testing of temporary rockfall protection measures

Volkwein, Hofstetter & Marc Hauser

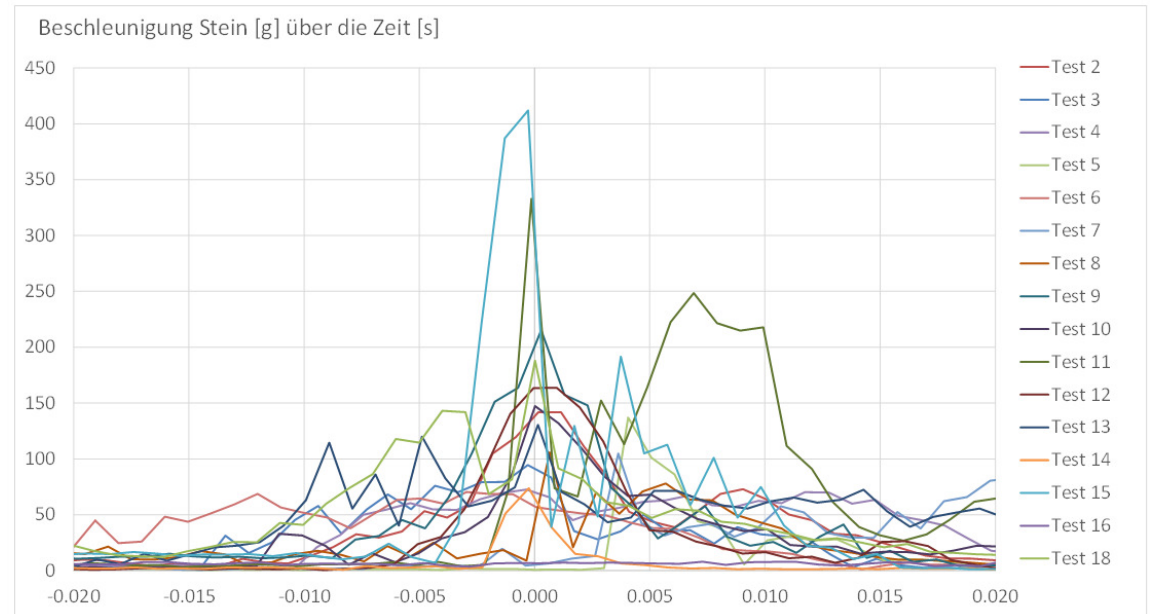
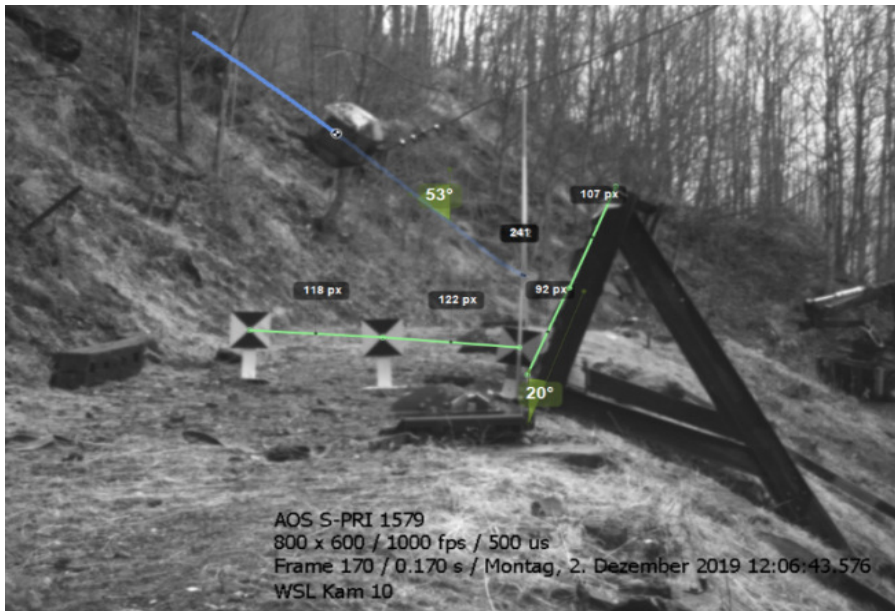
Motivation and Test Setup

The Swiss Railways (SBB) enhance their construction measures with risk-based methods. For the steel palisades no information exist how much rockfall energy they can absorb.



Measurements

- HS-Videos
- Block acceleration
- Anchorage force



Results

- Loosely placed (barrier flips over) < 12kj
- With upslope anchorate > 180kj
- Energy absorber reduces load on anchor significantly <40%

