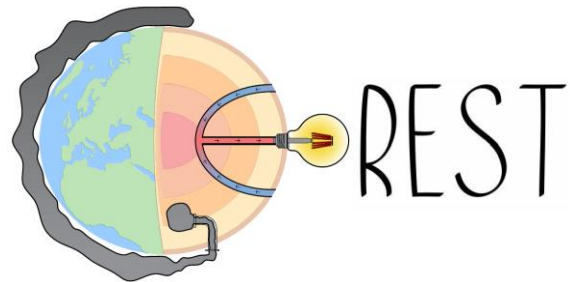


The role of fault offset in induced seismicity potential

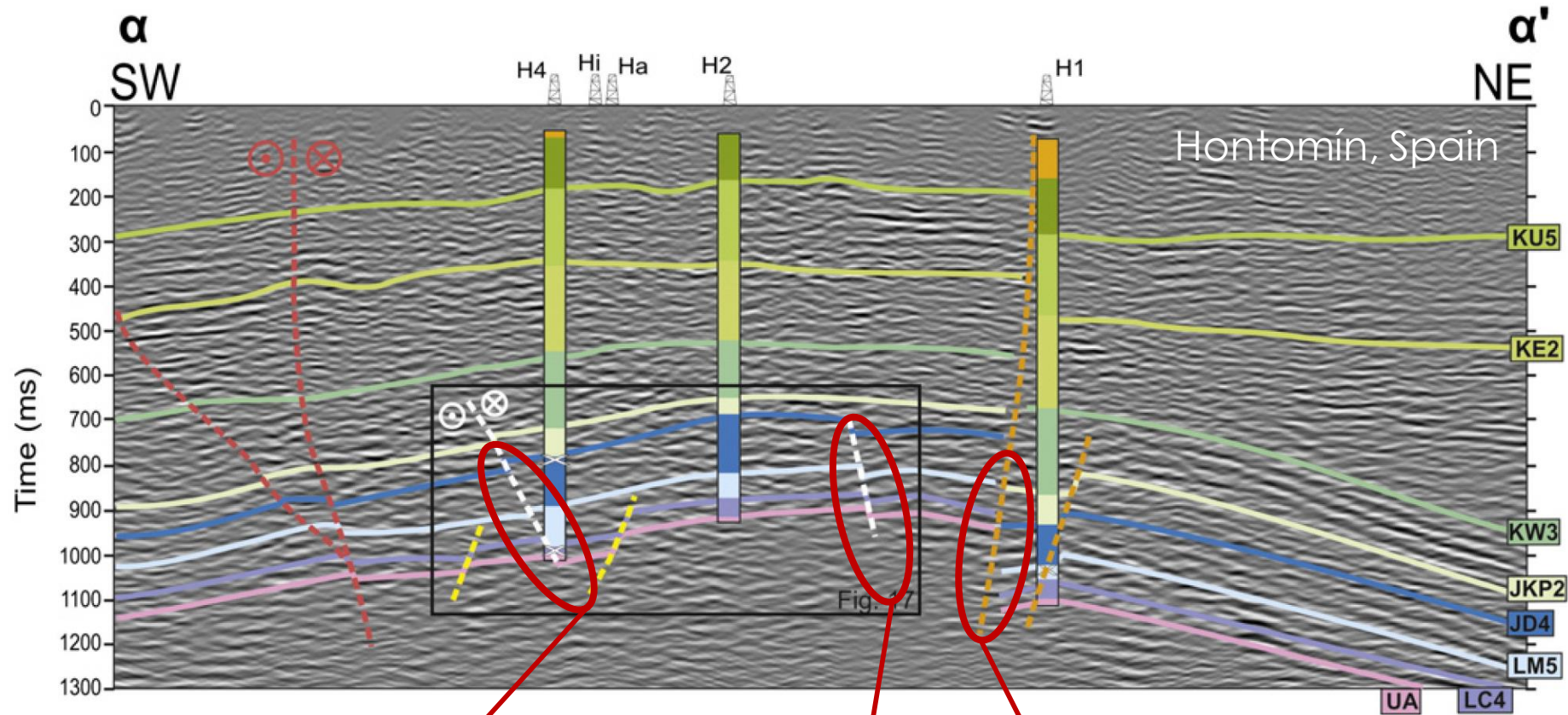
Víctor Vilarrasa, Francesco Parisio, Roman Makhnenko,
Haiqing Wu and Iman Rahimzadeh Kivi



European Research Council
Established by the European Commission

Motivation: faults are commonly present in the subsurface

Geo-energy applications affect fault stability and may cause reactivation, inducing seismicity



No offset

Offset \leq reservoir thickness

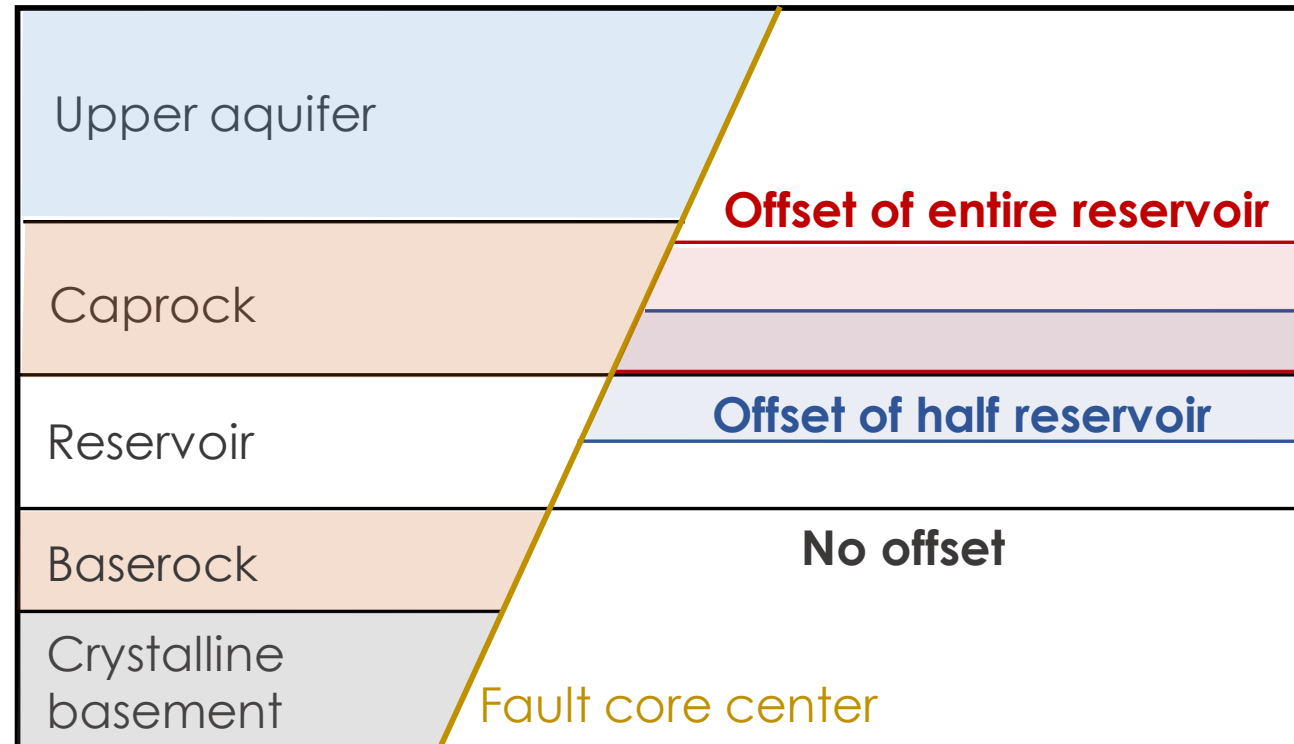
Offset \geq reservoir thickness

Alcalde et al. (2014)

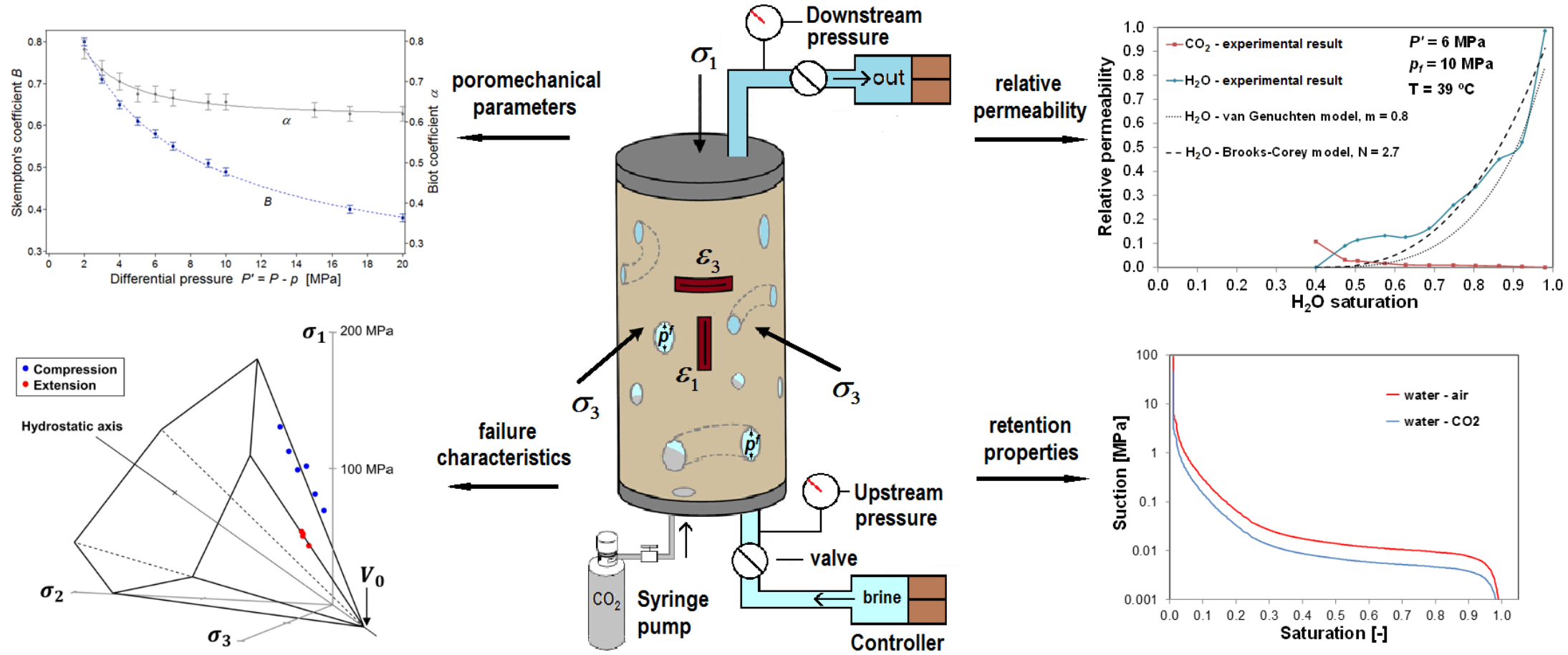
Objective: investigate the effect of fault offset on induced seismicity potential

We inject CO₂ in a reservoir within a stratified sedimentary system crossed by a low-permeable fault in a normal faulting stress regime

Scenarios

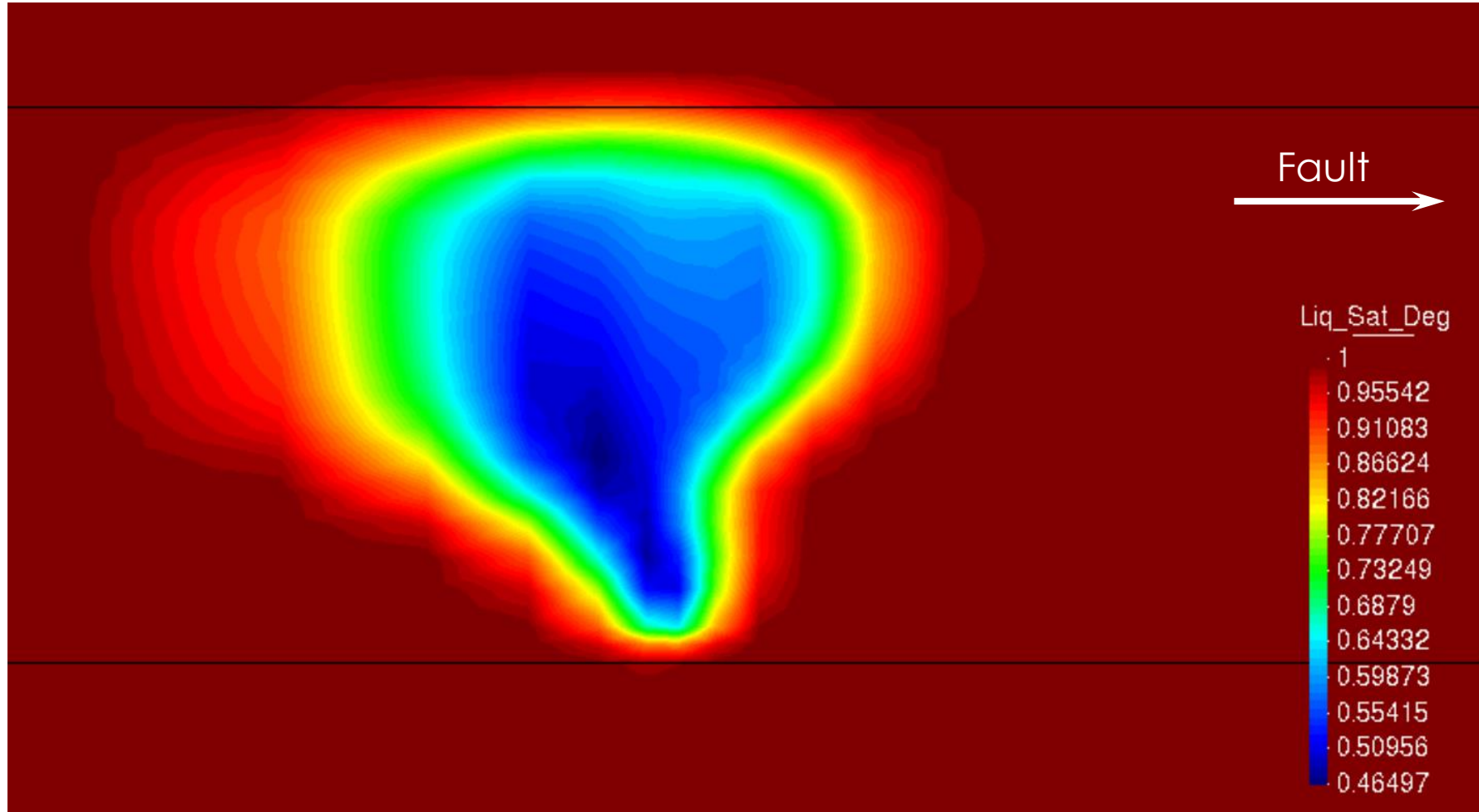


Material properties: for reservoir, caprock, baserock, fault core, and damage zones are taken from lab. measurements



- Permeability and relative CO₂/brine permeabilities
- Young's modulus and Poisson's ratio
- Gas entry pressure and porosity

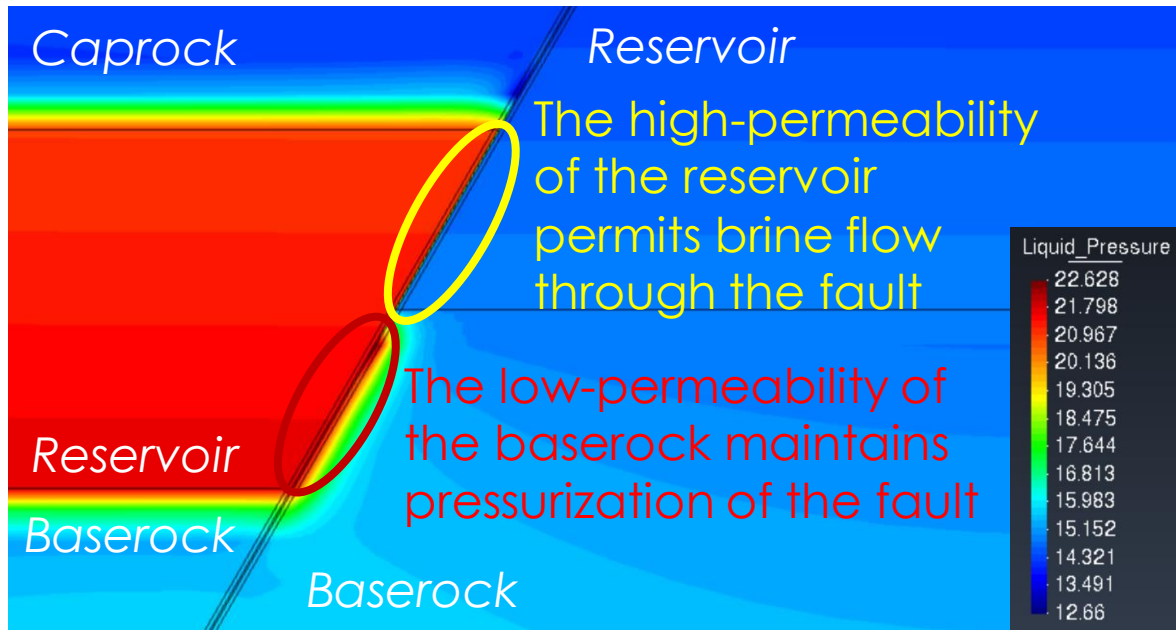
Results: 1 year injecting 0,002 kg/s/m of CO₂
CO₂ plume



The additional pressurization caused by the low-permeable fault displaces the CO₂ plume away from it

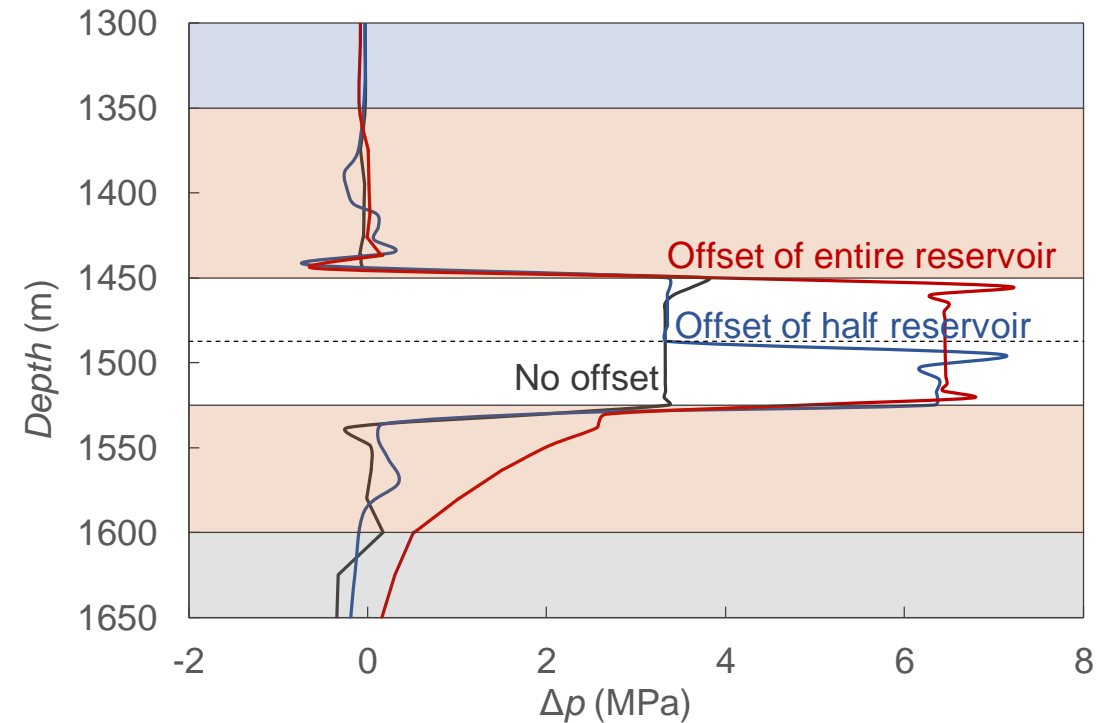
Results: Liquid pressure at the center of the fault core

Liquid pressure distribution



Fault offset controls fluid pressure at the fault

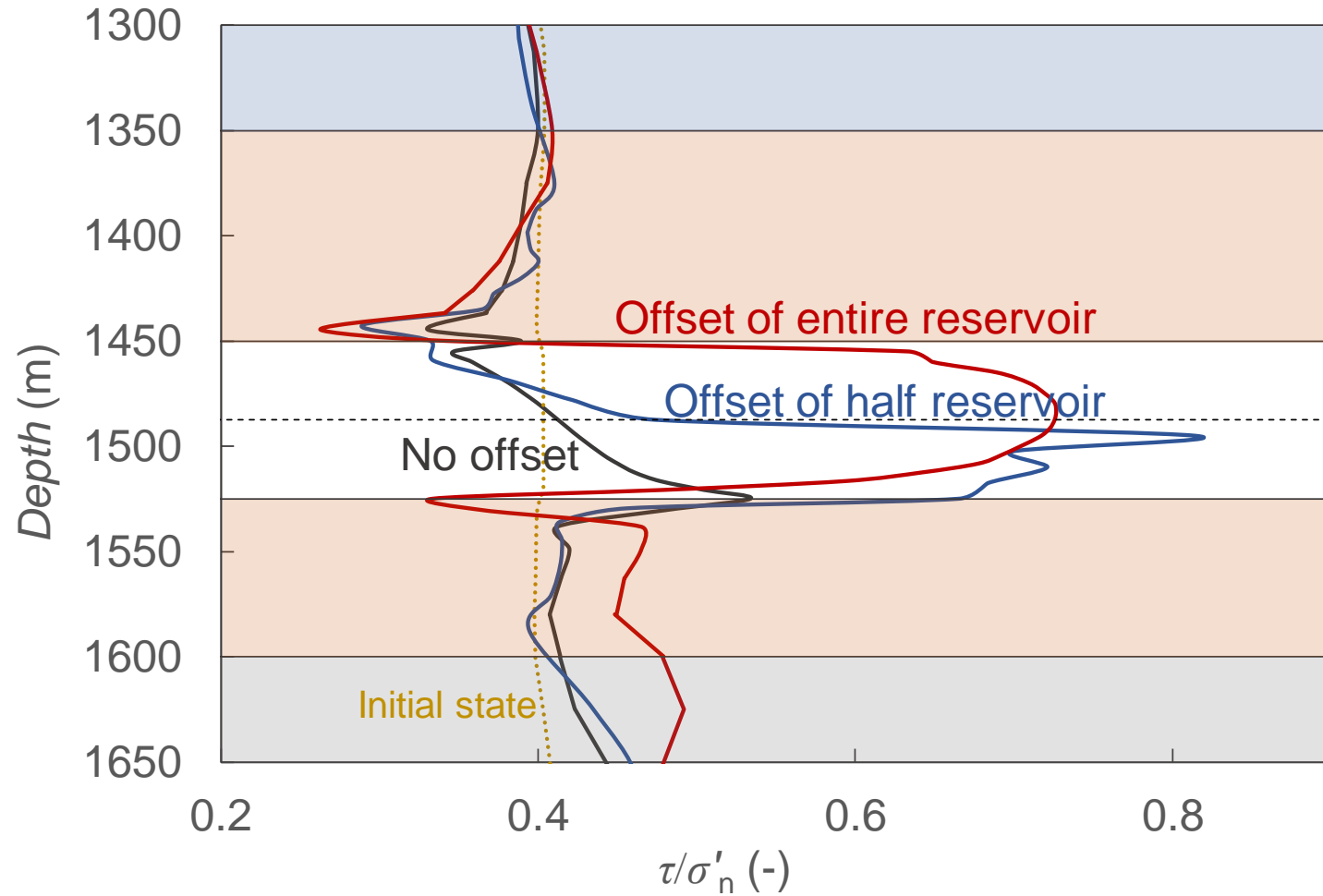
Pressure change at the fault



The larger the offset, the larger the pressurization of the fault

Fault stability

Ratio of shear stress to effective normal stress along the fault core



As the offset increases, the destabilized fault patch becomes larger and so does the magnitude of induced seismic events

Questions?



This project has received funding from the European Research Council (ERC) under the European Union's Horizon 2020 research and innovation programme (grant agreement No 801809)

This presentation reflects only the author's view and the Agency and the Commission are not responsible for any use that may be made of the information it contains.