

EGU2020

Flow trends in Western Hungary

Mátyás, Bene, Koch

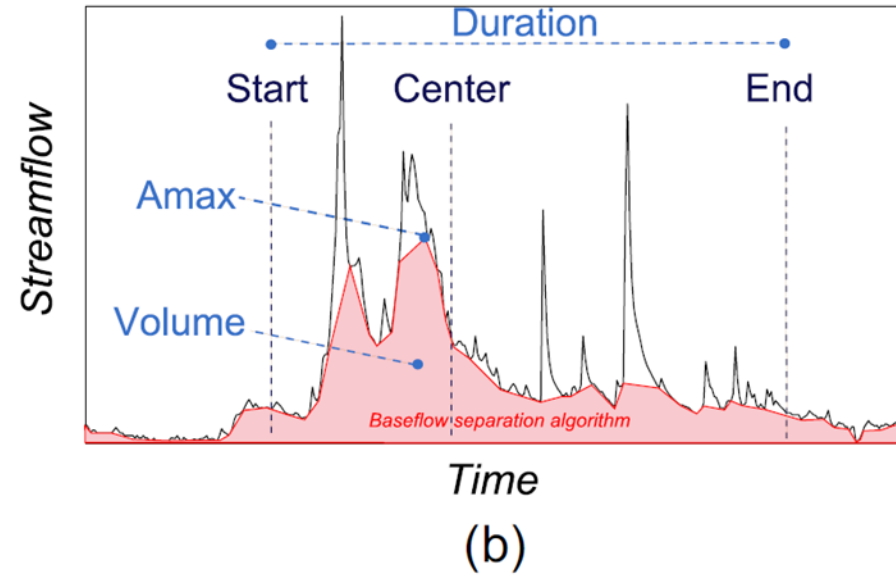
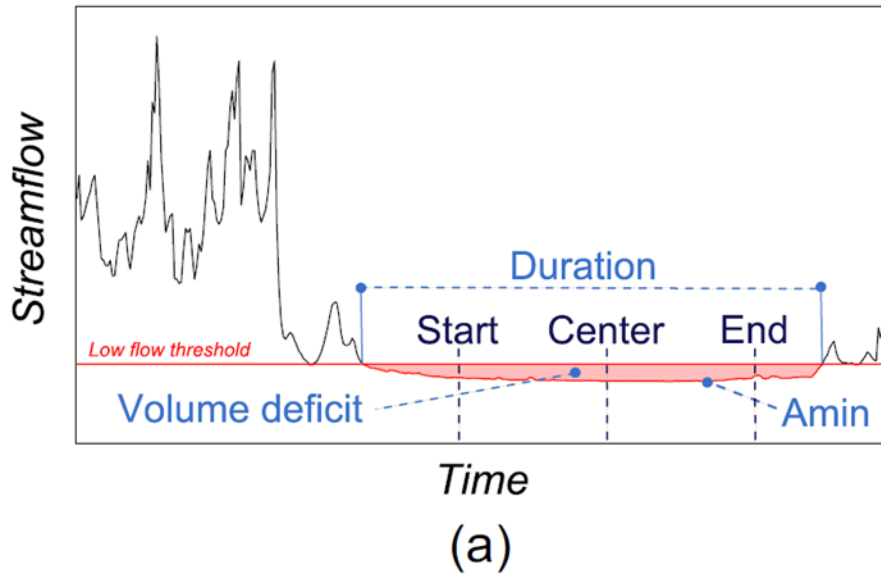
Széchenyi István University

Department of Transport Infrastructure and Water Resources Engineering

Introduction

- 74 small streams in Hungary;
- Time period: 1980-2016 (36 years);
- Daily measured discharge;
- 10% significance using Mann-Kendall test.

Flow signatures evaluated



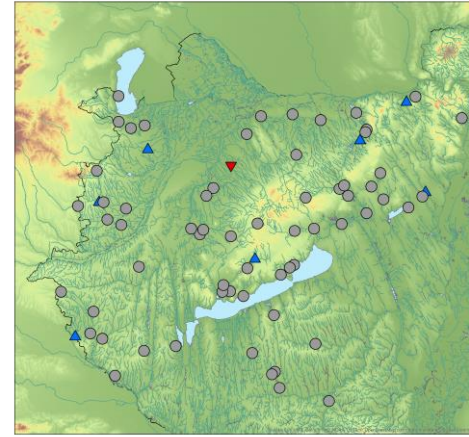
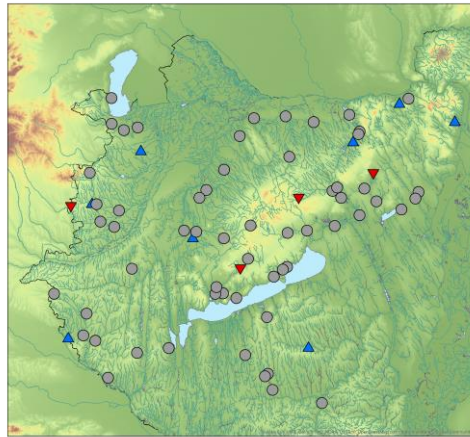
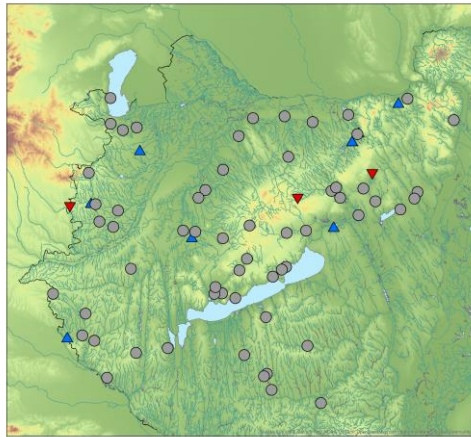
(Bard et al., 2011)

Trends in low-flow signatures

Start

Center

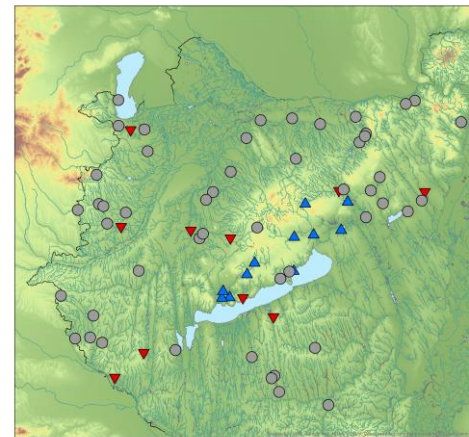
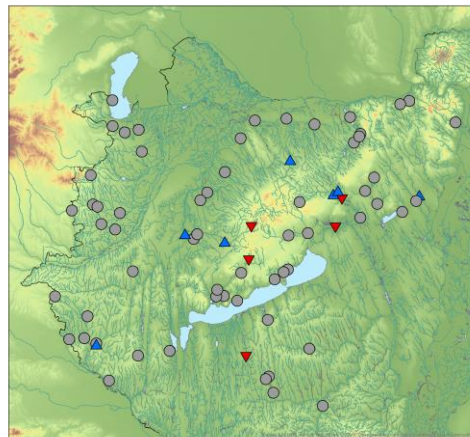
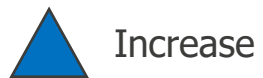
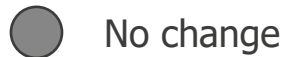
End



No significant change; start occurs earlier.

Volume deficit

Annual minima

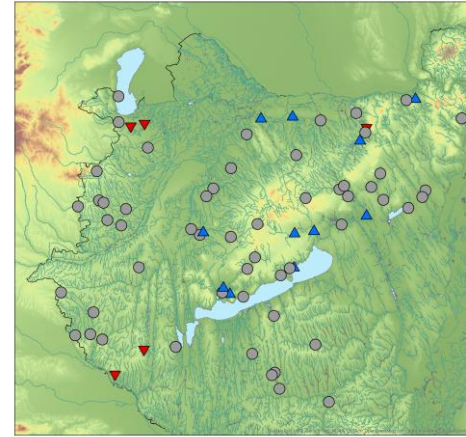
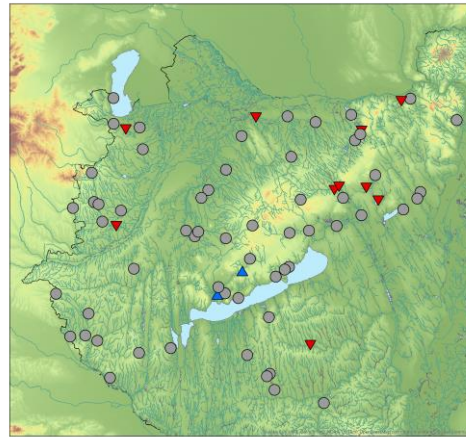
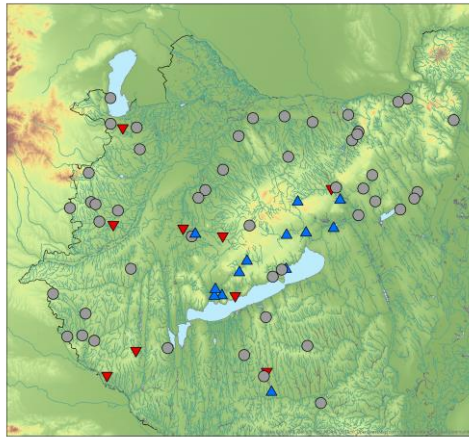


Trends in high-flow signatures

Start

Center

End

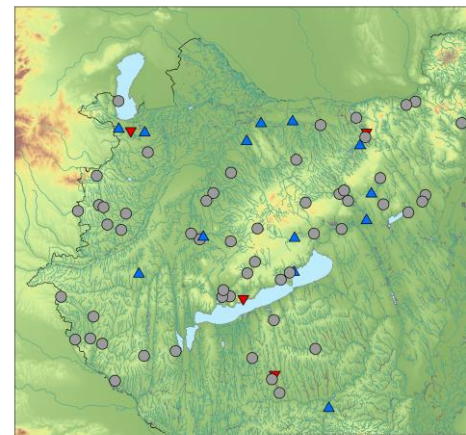
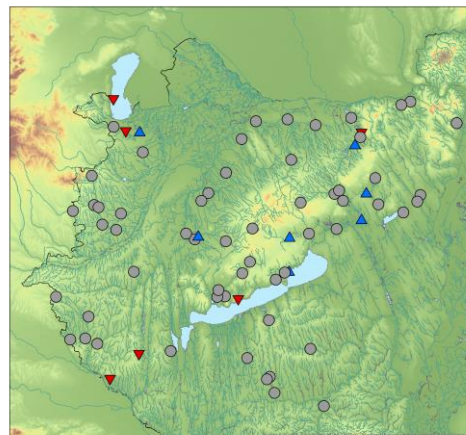


Significant change;
start and occurs
later, center earlier.



Volume deficit

Annual maxima



Faster runoff,
higher peak



This work was undertaken as part of a project funded by the EFOP-3.6.1-16-2016-00017.