

# The dynamics of farmer migration and resettlement in the Dhidhessa River Basin, Ethiopia



United Nations  
Educational, Scientific and  
Cultural Organization



Institute for  
Water Education  
in partnership with UNESCO





# **The dynamics of farmer migration and resettlement in the Dhidhessa River Basin, Ethiopia**

Meseret Dawit Teweldebrihan <sup>a, b, \*</sup>, Saket Pande <sup>b</sup> and Michael McClain <sup>a, b</sup>

*<sup>a</sup> Department of Water Science and Engineering, IHE Delft Institute for Water Education, Westvest 7, 2611 AX Delft, the Netherlands*

*<sup>b</sup> Faculty of Civil Engineering and Geosciences, Hydrology, Delft University of Technology, PO Box 5048, Delft 2600 GA, the Netherlands*

*\*Corresponding author: Meseret Dawit Teweldebrihan*

*E-mail: [m.dawit-teweldebrihan@unesco-ihe.org](mailto:m.dawit-teweldebrihan@unesco-ihe.org), mesedawit@gmail.com*

# Introduction

- ❑ Abbay/Blue Nile River crosses the Ethiopian highlands and African Equatorial Lakes region.
- ❑ Dhidhessa River Basin (DRB) is one of the major tributaries of the Abbay River Basin. .



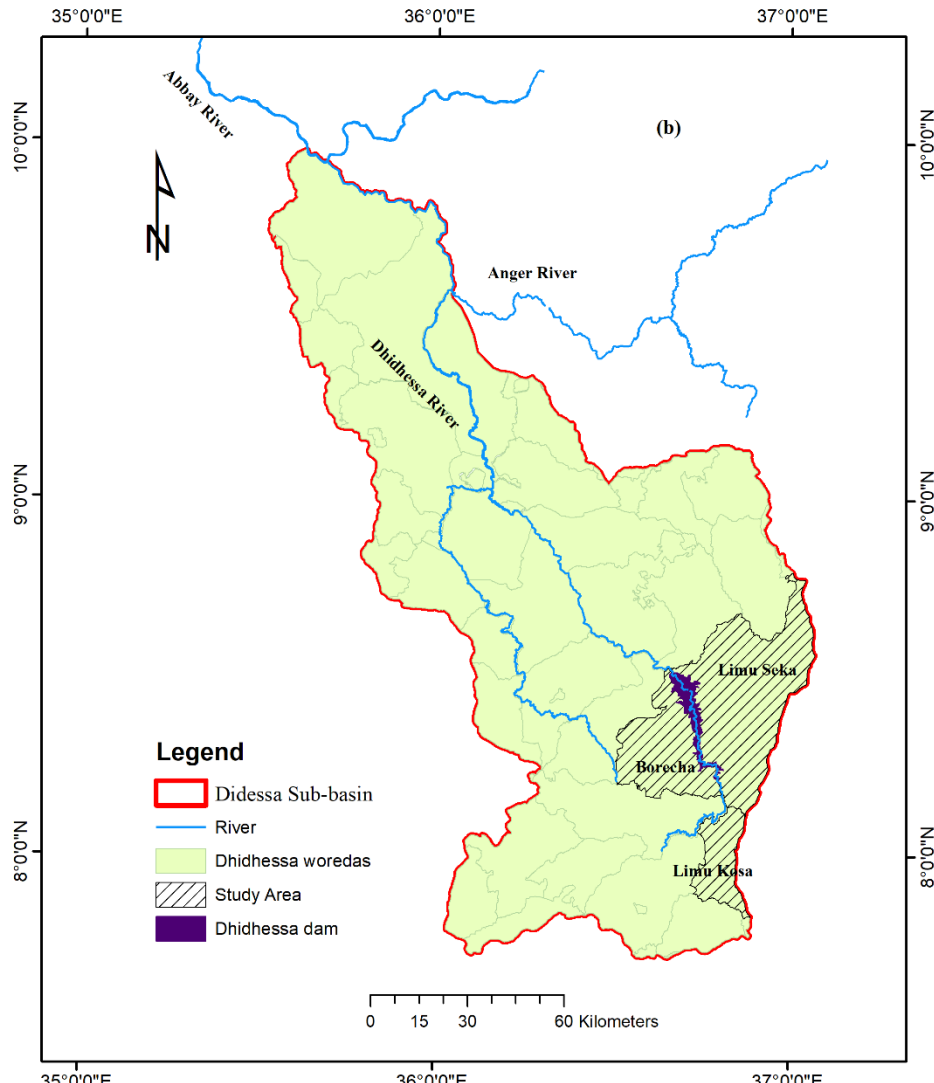
Figure : Dhidhessa River

# Scope



- ❖ Large-scale-dam construction is undergoing for sugarcane irrigation in the basin. This study focused on the dynamics of population migration, settlement, relocation, and water resource developments in the DRB through the use of primary and secondary data.

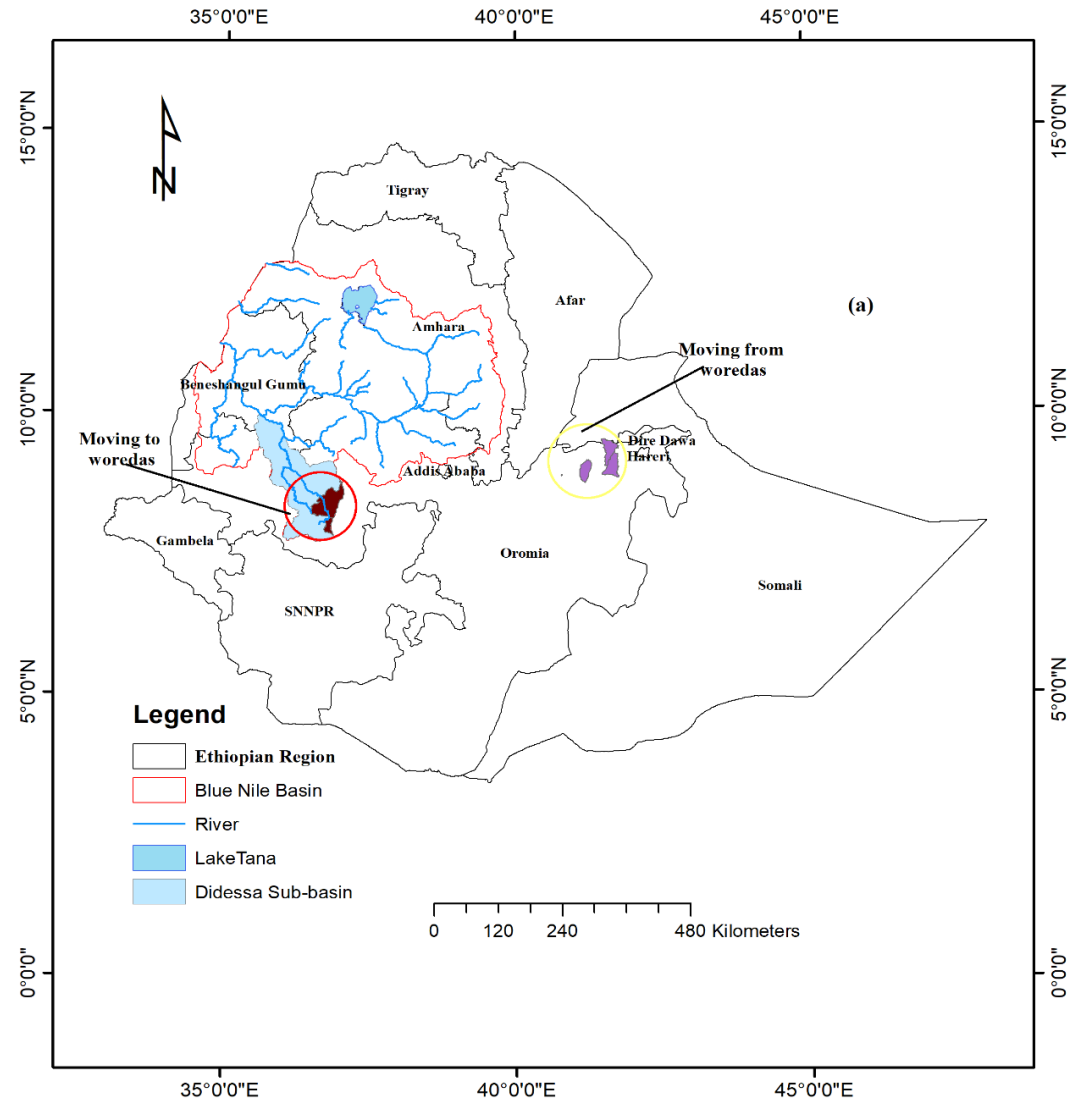
# Study area



**Figure :** Dhidhessa River Basin (DRB), Dam location and study area/woredas for farmer survey.

# Main Objective

- the dynamics of population migration, settlement, relocation, and water resource developments in the DRB

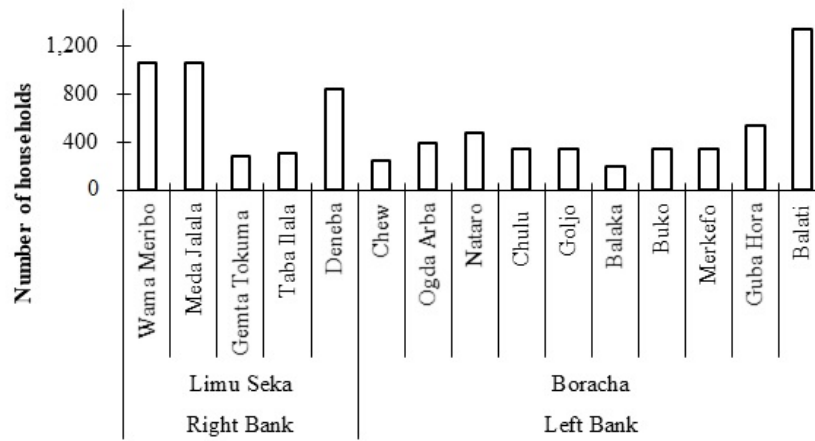


**Figure :** The geographical location of the migration and settlement area,

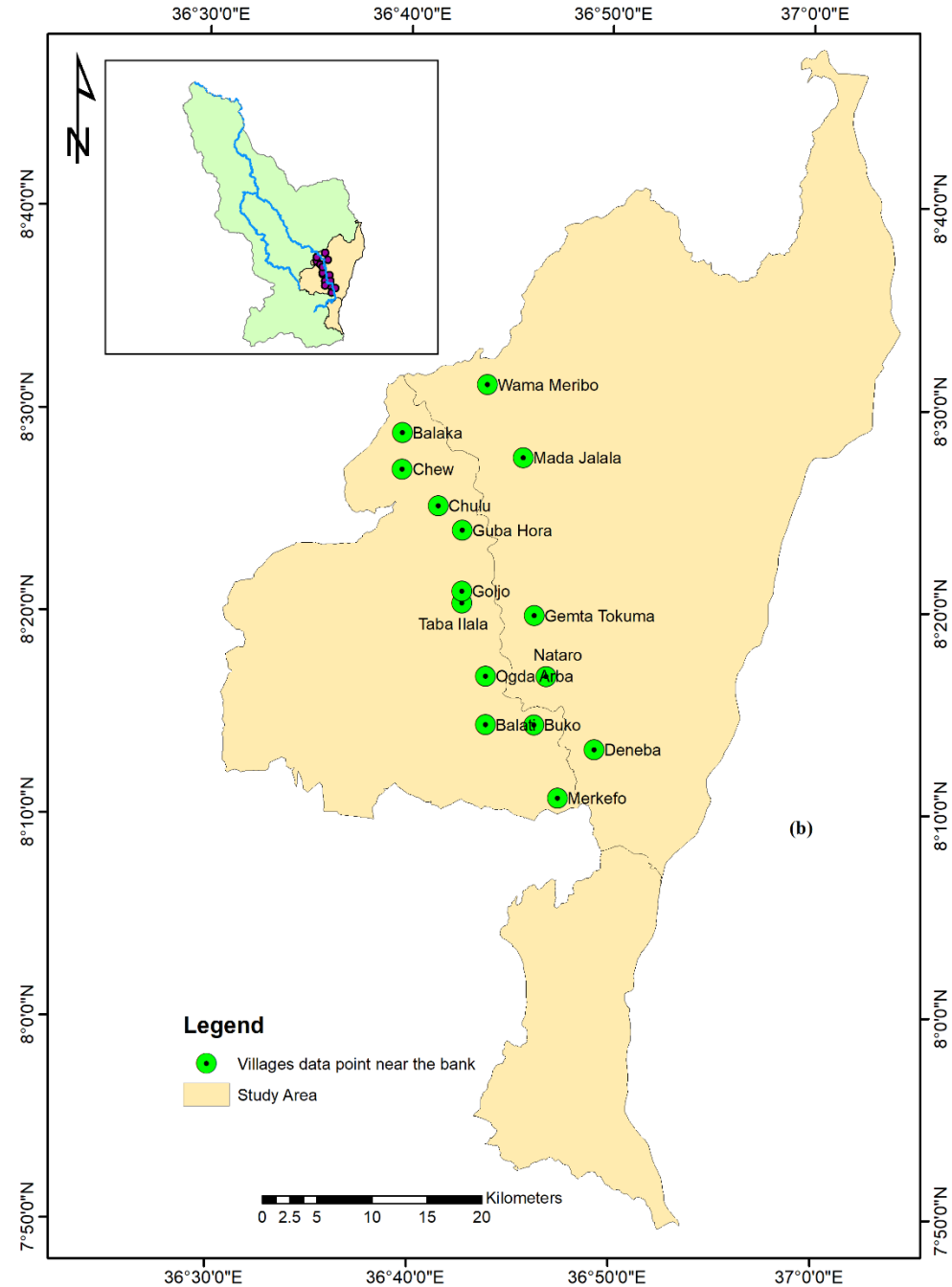
# Methodology

## □ Data collection:

- ✓ Field/site observation;
- ✓ interviewing the stakeholders and key informants;
- ✓ Focus group discussions.



(a)

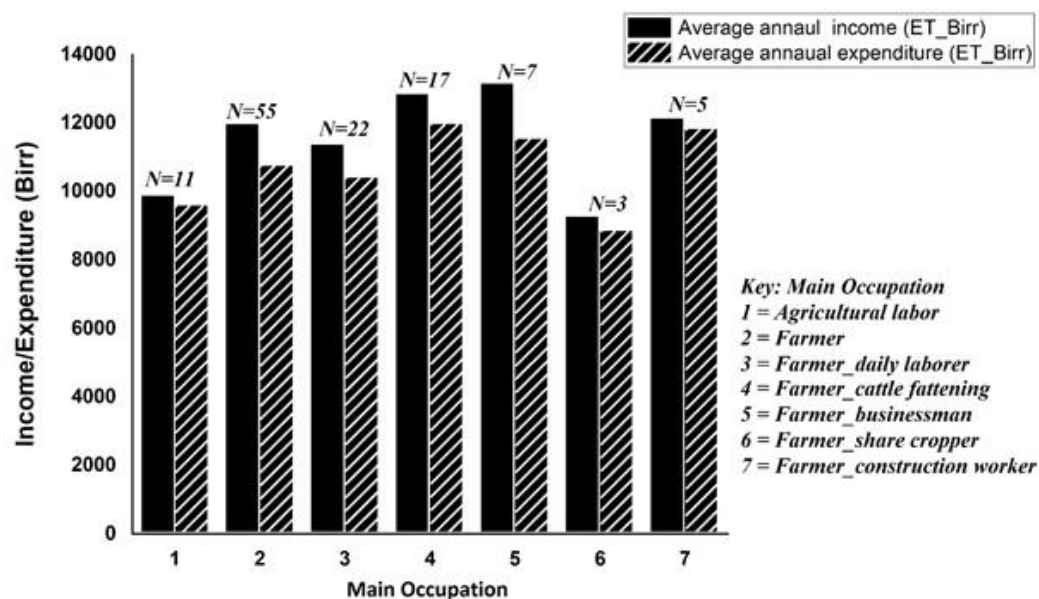




# Result

□ major economic activity :

- agriculture, and subsistence farming
- mixed type of farming system
- associated with animal husbandry and all rely on traditional farming methods including manual and animal (oxen) labour.

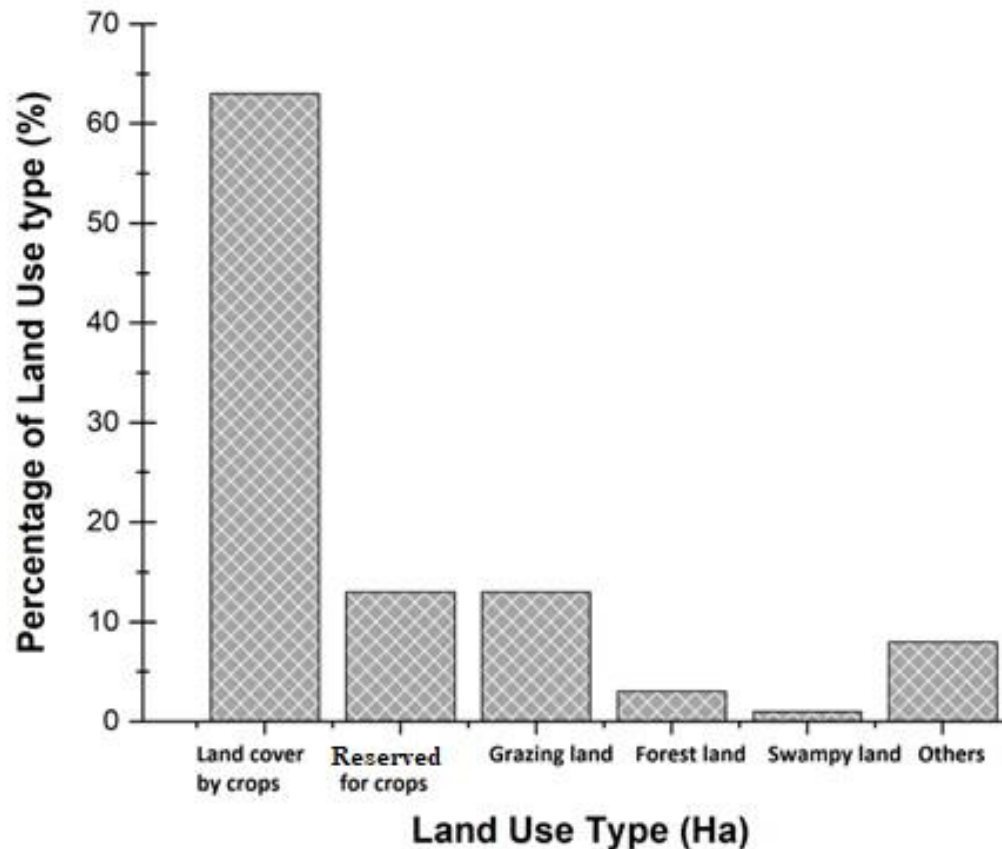


**Figure :** Average annual income and expenditure at a household level.



# Cont...

- ❑ Farmers utilize the land for crop production and > 60% of the land is covered by crops

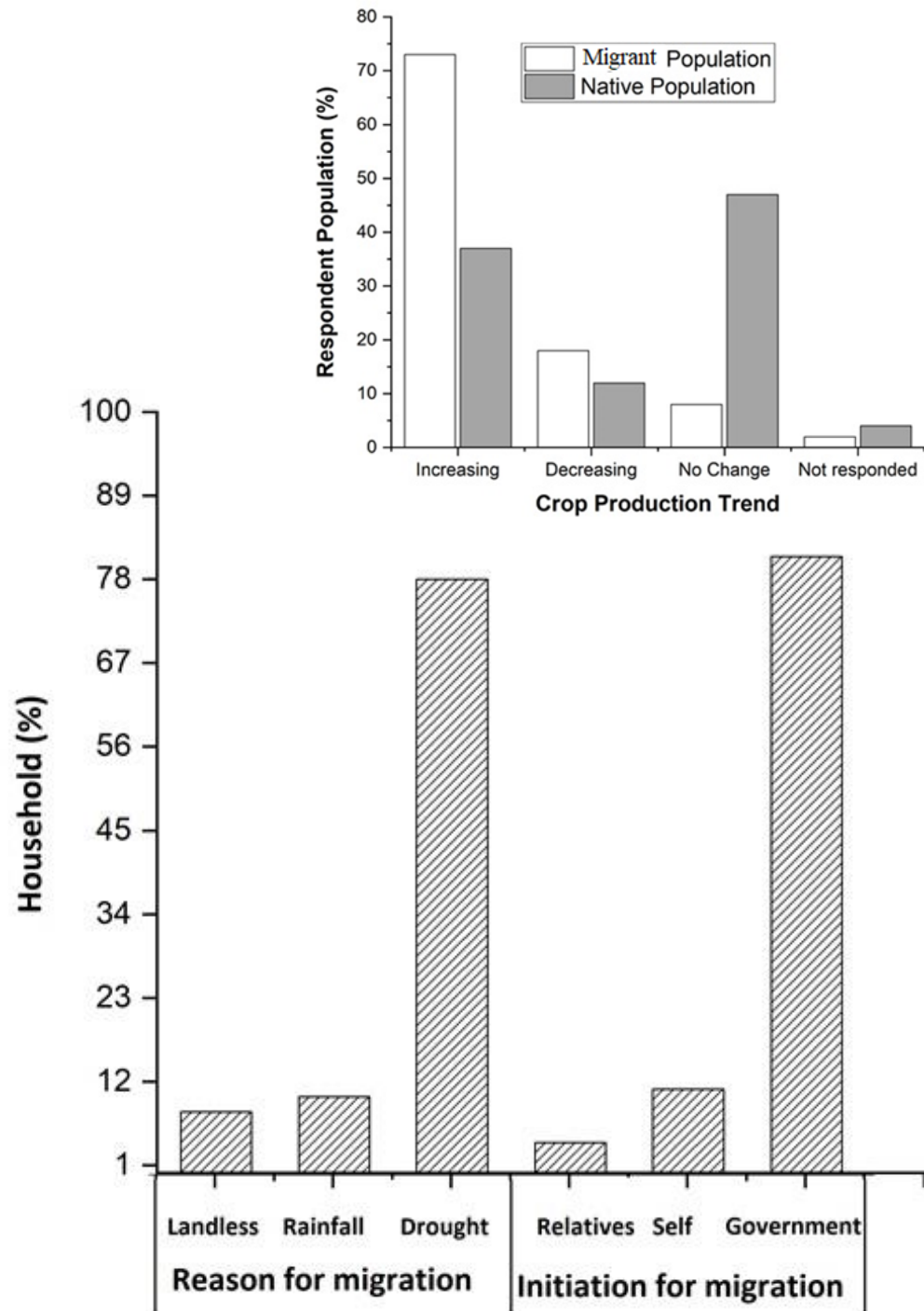


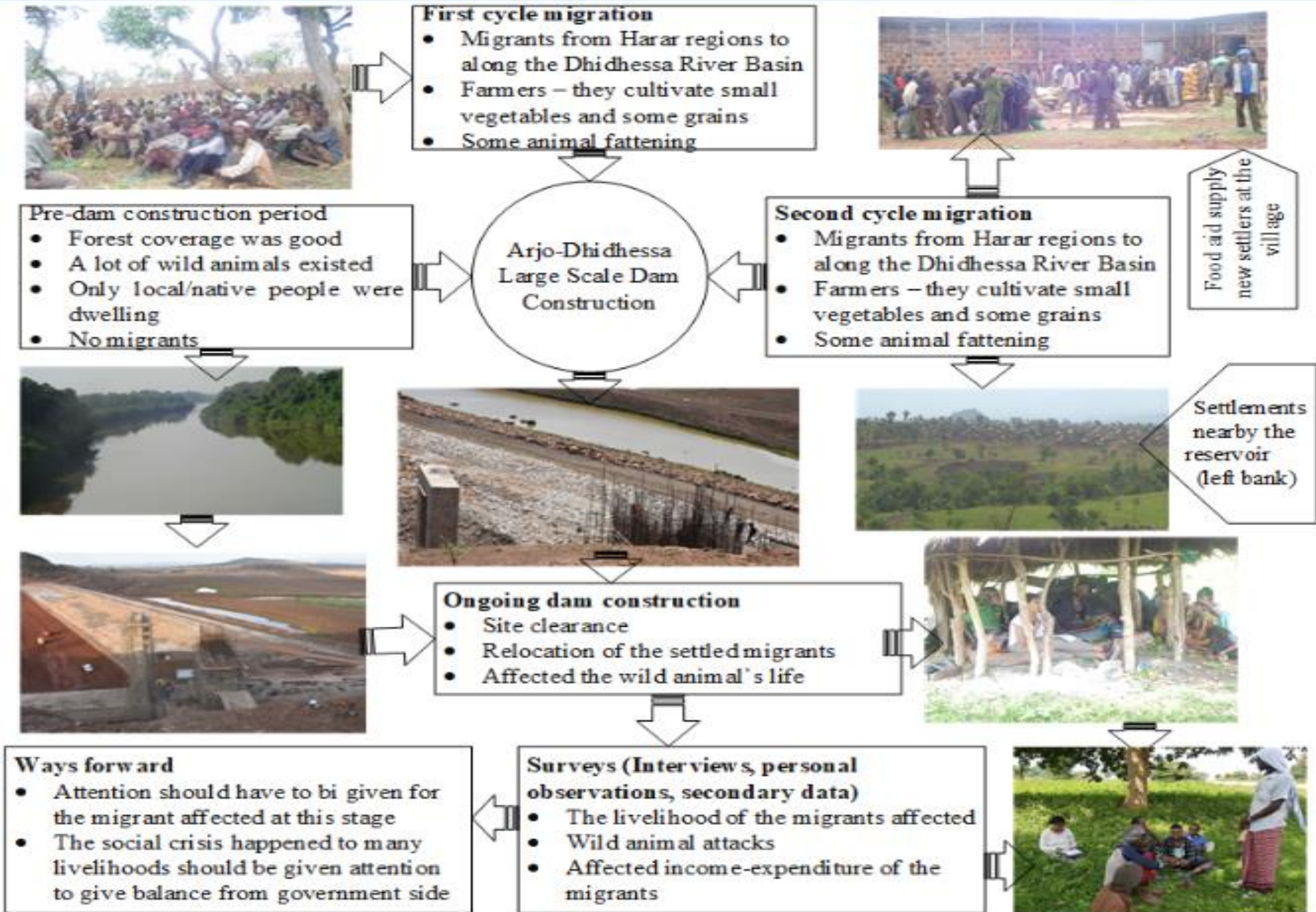
**Figure :** Proportion of land use type in terms of land coverage by crop, reserved for crop, grazing land, forest land, swampy land, and others (sourced from primary data).

# Cont...

- ❑ Two major migration waves were observed:
  - the first was in 1984-1986 during a severe drought and
  - the second one was during late 2005-2017

**Figure :** Factors (drivers) for rural population migration along with the Dhidhessa River Basin during both the first and the second migration cycle.





**Figure:** Schematic representation Farmers Migration in Arjo-Dhidhessa





Thank You!

