

Validation of reconstructed hydroclimate variables for past drought assessment

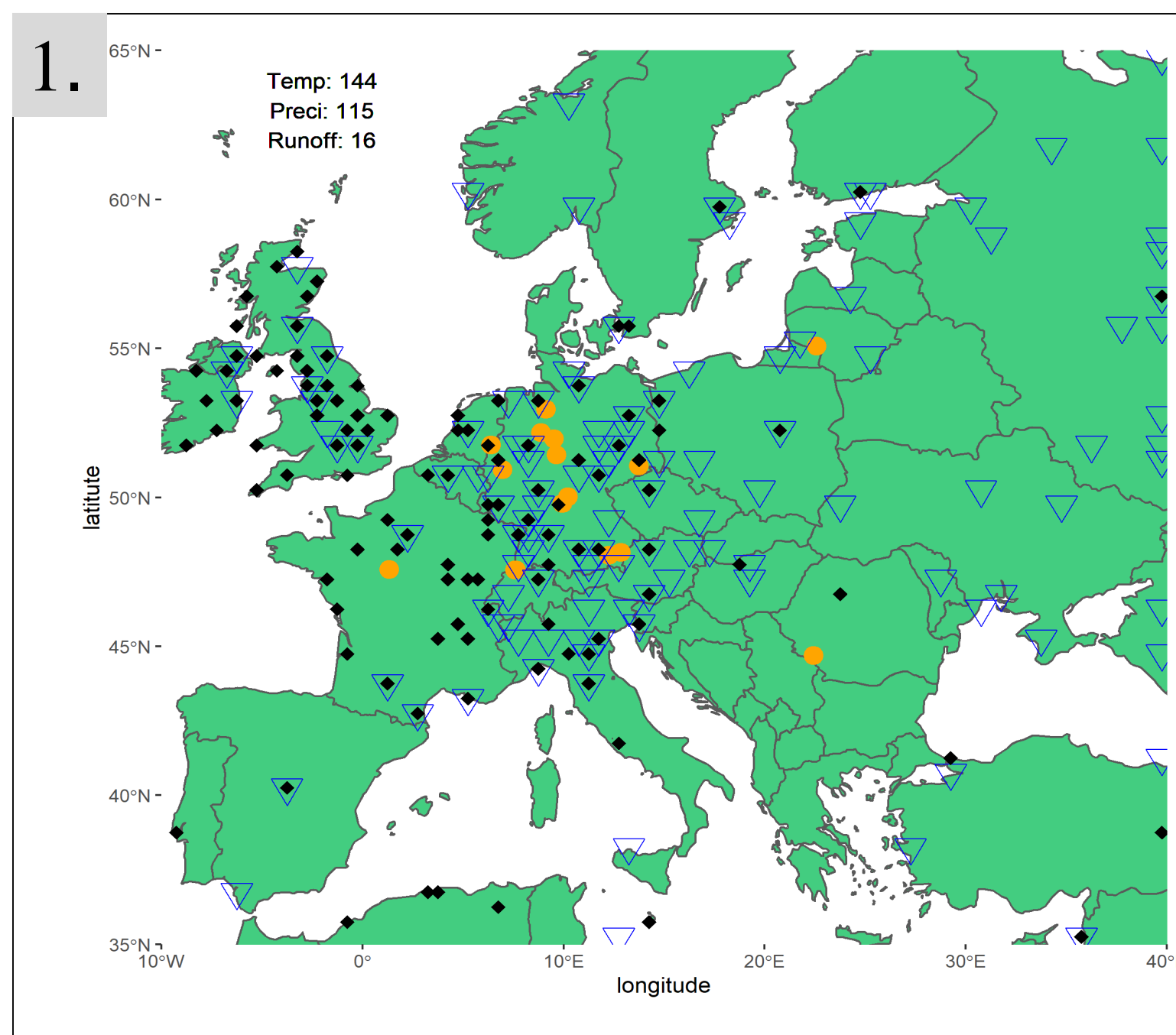
Martin Hanel¹, Sadaf Nasreen¹, Mijael Vargas¹, Ujjwal Singh¹, Petr Máca¹, Oldřich Rakovec^{1,2}, Rohini Kumar², and Yannis Markonis¹

¹Czech University of Life Sciences, Faculty of Environmental Sciences, Department of Water Resources and Environmental Modelling, Prague, Czechia (hanel@fzp.czu.cz)

²Helmholtz Centre for Environmental Research GmbH - UFZ, Leipzig, Germany



* Corresponding Author: nasreen@fzp.czu.cz

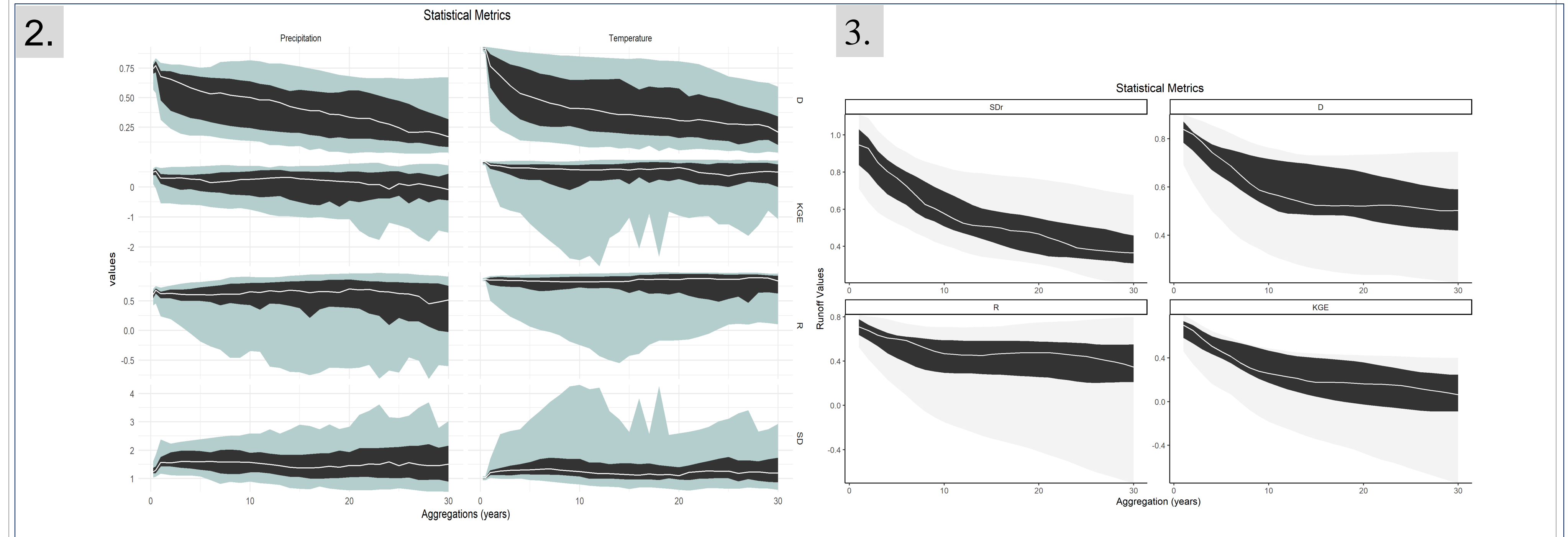


Abstract In present paper, we compare the reconstructed gridded seasonal precipitation (P) and temperature (T) for Europe^[1,2] to the available station data from the GHCN^[3] network dated back to 1800. The basic statistical properties at various time-scales ranging from 1/4 to 30 years are examined. Our finding shows, that there are significant biases clearly seen in the reconstructed P and T and the bias in mean and variability considerably vary over the time-scales. We further investigated how the simulation of hydrological model driven by reconstructed data compares to that based on station data and runoff from GRDC database^[4]. The results are validated and a reconstruction back to 1500 is provided. Similarly the Standardized Runoff index are determined for all available GRDC station^[4].

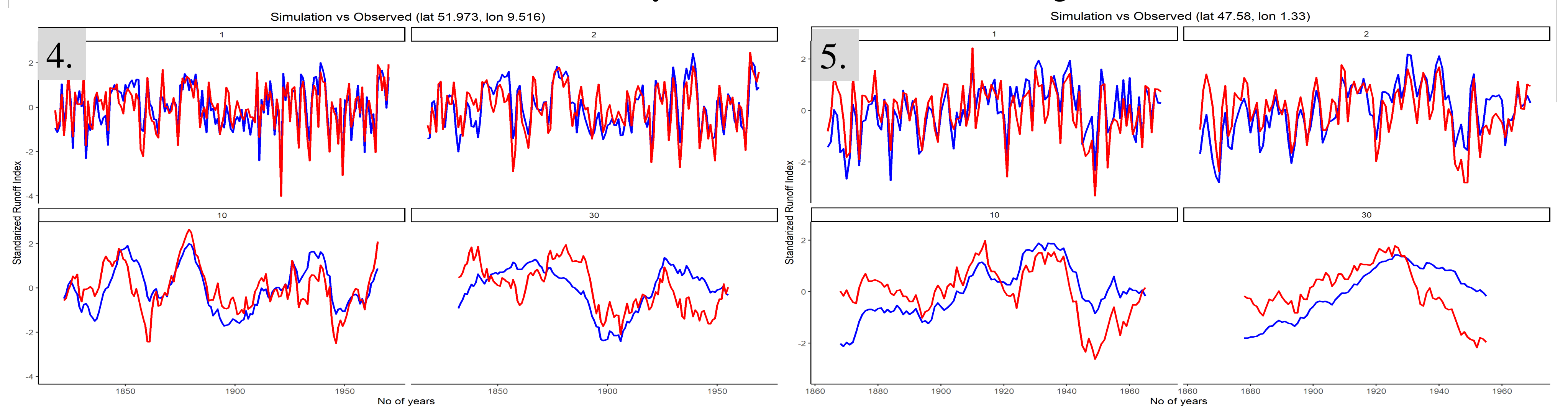
References

1. Andreas Pauling, Jürg Luterbacher, Carlo Casty, and Heinz Wanner. Five hundred years of gridded high-resolution precipitation reconstructions over Europe and the connection to large-scale circulation. *Climate dynamics*, 26(4):387–405, 2006.
2. Elena Xoplaki, Jürg Luterbacher, Heiko Paeth, Daniel Dietrich, Niklaus Steiner, Martin Grosjean, and Heinz Wanner. European spring and autumn temperature variability and change of extremes over the last half millennium. *Geophysical Research Letters*, 32(15), 2005.
3. Matthew J Menne, Claude N Williams, Byron E Gleason, J Jared Rennie, and Jay H Lawrimore. The global historical climatology network monthly temperature dataset, version 4. *Journal of Climate*, 31(24):9835–9854, 2018.
4. The Global Runoff Data Centre (GRDC), D - 56002 Koblenz, Germany.
5. Mouelhi, S., Michel, C., Perrin, C. & Andreassian, V. (2006) Linking stream flow to rainfall at the annual time step: the Manabe bucket model revisited. *J. Hydrol.* 328, 283-296, doi:10.1016/j.jhydrol.2005.12.022

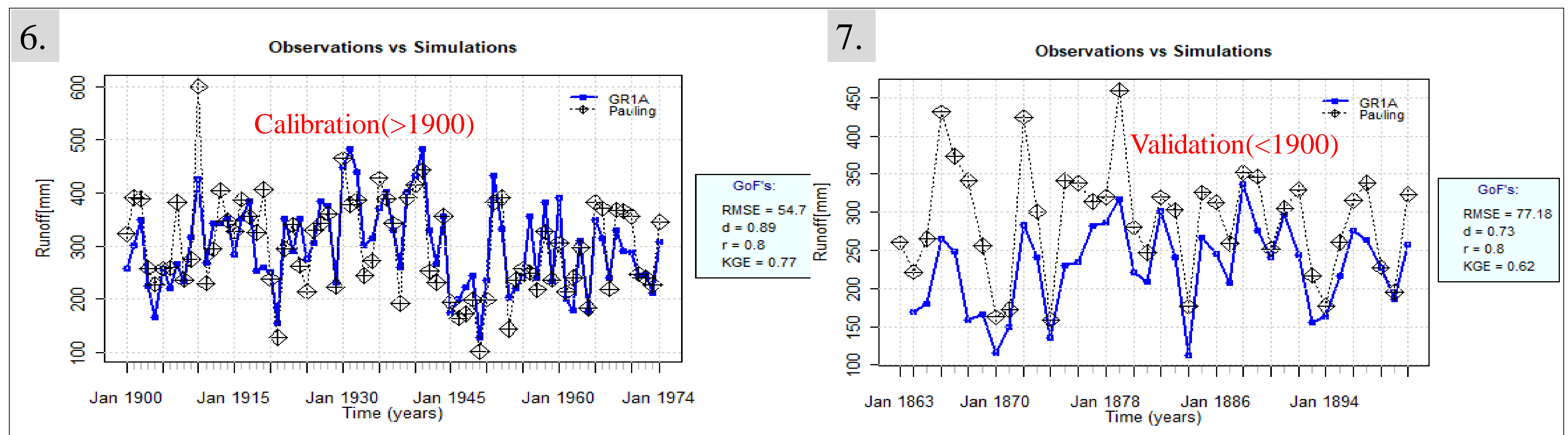
The assessment of European droughts are limited to short term record (until 20th century), a long and reliable paleoclimate reconstruction is important to gain understanding of past climate and droughts.



The error in variance (SD), index of agreement (D), correlation (R) and Kling-Gupta efficiency (KGE) for the paleoclimate reconstruction of precipitation, temperature and runoff demonstrates with respect to observational [P,T] GHCN-m[3] and simulated runoff driven by GR1A model are shown in figures 2-3.



Standardized Runoff index (SRI) for 1, 2, 10 and 30 years aggregations show good match between the GR1A model simulation^[4] and observed runoff for catchments in Germany and France (figure 4,5), some are worst (not shown).



Summary

- ✓ While the agreement of reconstructed precipitation and temperature with observations is at most sites reasonable at seasonal to annual time-scale it typically gets much worse for longer aggregations.
- ✓ In particular, the variability of precipitation is underestimated at all time scales
- ✓ While the hydrological model (GR1A) is able to reproduce observed runoff in the calibration period (post-1900), the validation on independent (pre-1900) data shows significant discrepancies
- ✓ Our results show that the reconstructed precipitation and temperature data can be used for drought assessment only with caution