






Expert and novice gaze in seismic interpretation, implications for colour palette choice and learning.

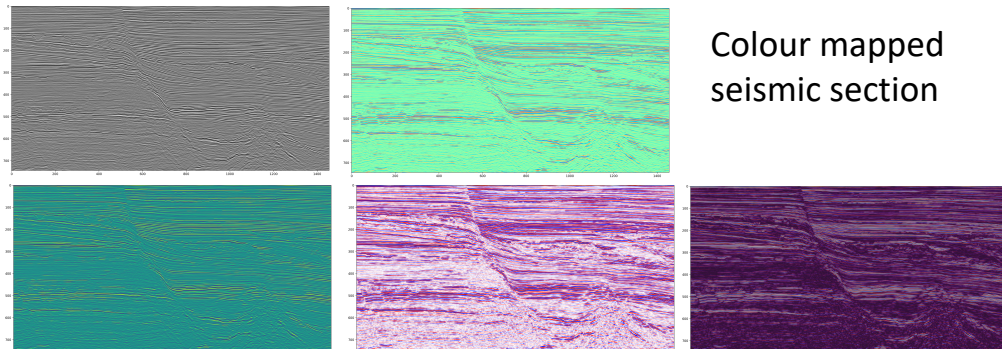


How do we see different colour maps?



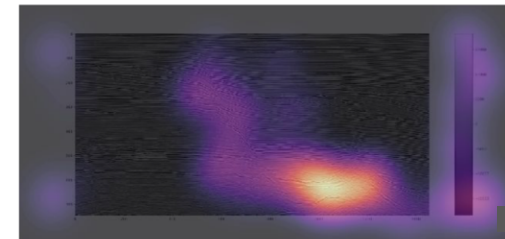
Clare E. Bond & Ben W. Tatler

Colour Map Category	Colour map	
1. Sequential (linear)	gray	
1a. Sequential (perceptually uniform)	viridis	
2. Diverging	seismic	
3. Cyclic	twilight	
4. Miscellaneous	rainbow	

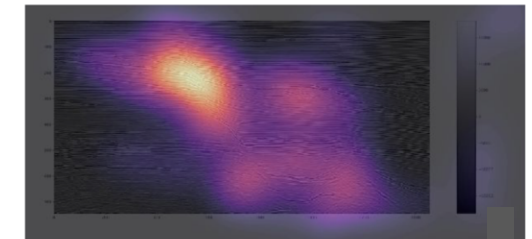


How do they affect what we look at when interpreting?

Gray – first 5 sec of viewing

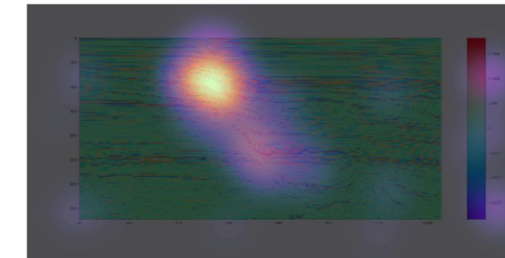


Experts

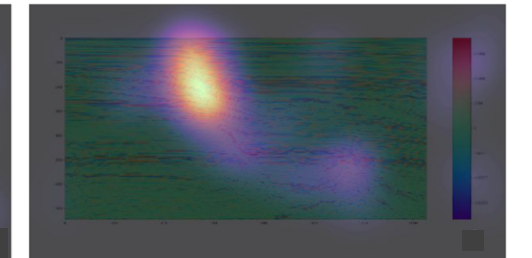


Novices

Rainbow – first 5 sec of viewing



Experts



Novices

Findings

Experts and novices look at different things.
Colour palette choice affects the gaze of both experts and novices.