

Detection and deformation monitoring of landslides by

InSAR: Applications along the Jinsha River, China

Ruya Xiao^{1,2}, Yongsheng Li³, Chen Yu², Zhenhong Li², Xiufeng He¹

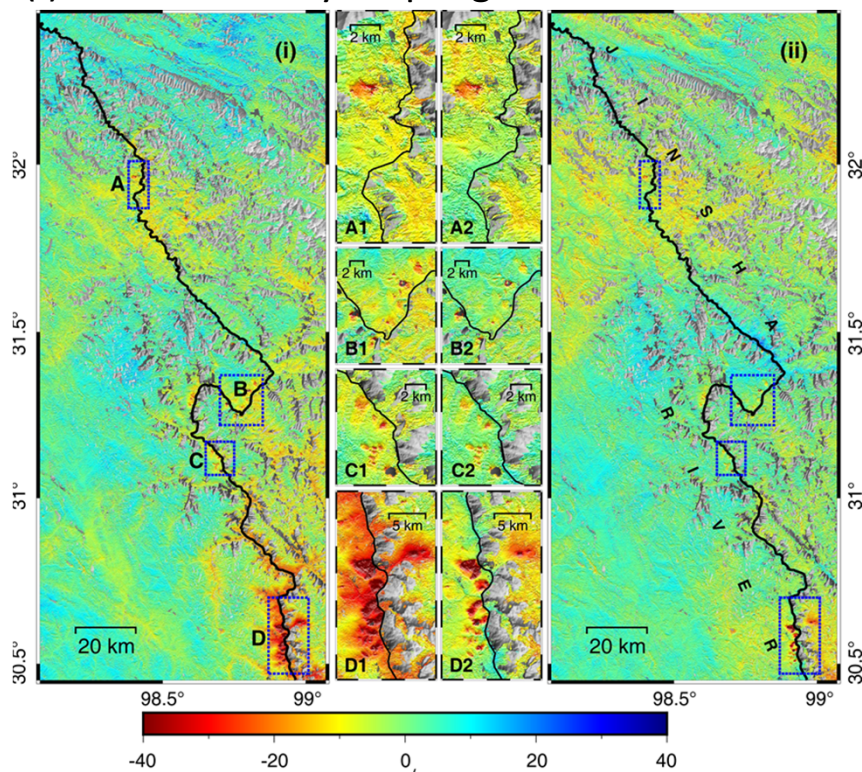
1 School of Earth Science and Engineering, Hohai University, Nanjing 211100, China

2 COMET, School of Engineering, Newcastle University, Newcastle upon Tyne NE1 7RU, UK

3 Institute of Crustal Dynamics, China Earthquake Administration, Beijing 100086, China



(I) General survey: Rapid geohazard detection

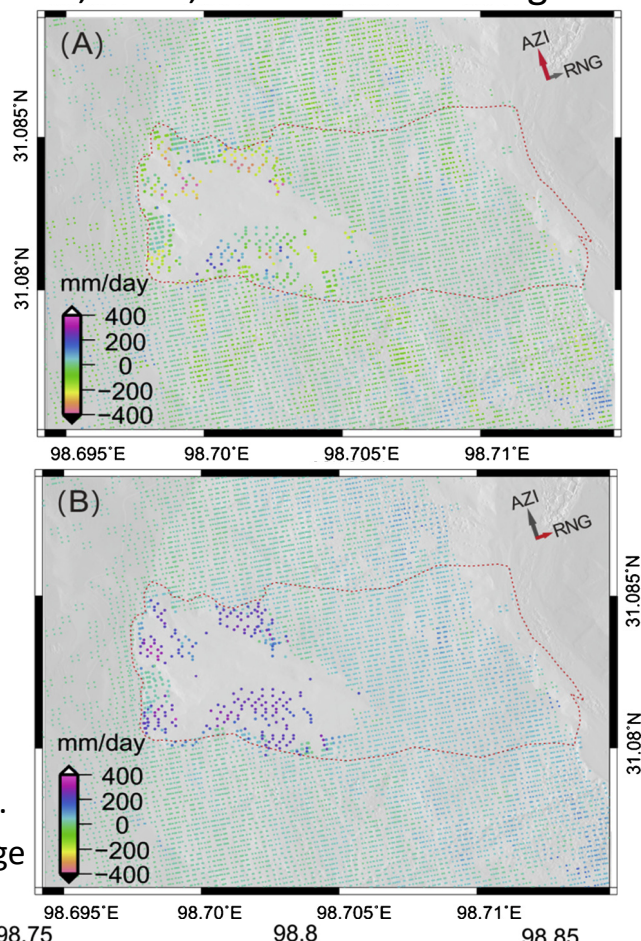


↑ The mean deformation rate map along the Jinsha River by InSAR stacking (i) without and (ii) with atmospheric correction.

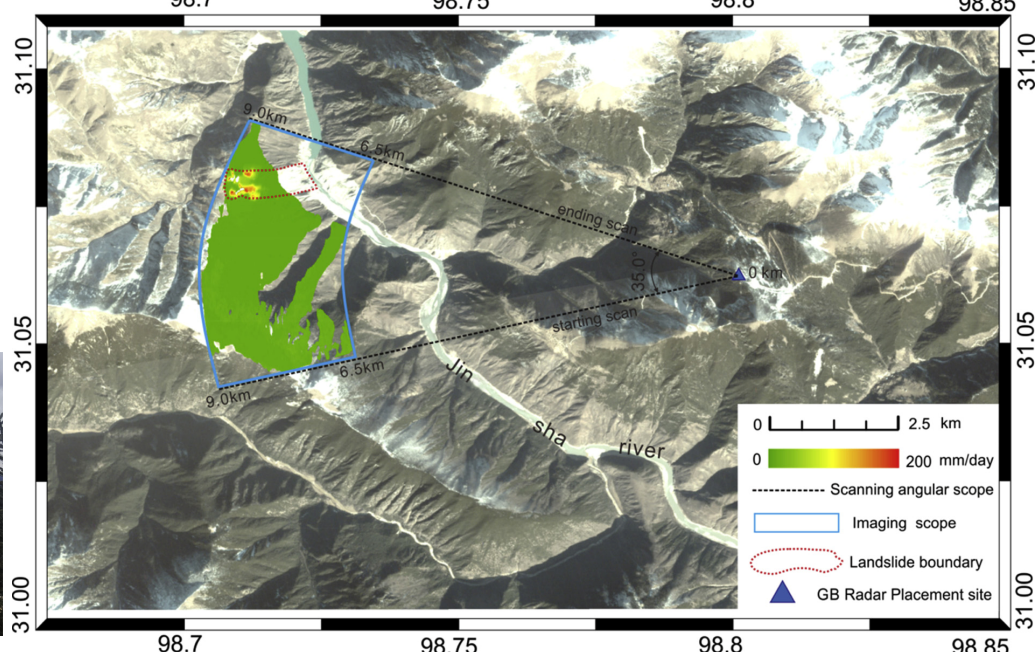
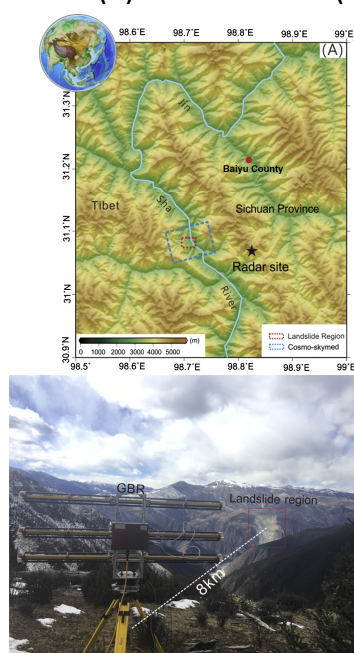
↗ The SAR pixel-offset tracking deformation results of the Baige Landslide in (a) azimuth and (b) range direction, respectively.

(II) Detailed investigation:

PSI, SBAS, SAR offset-tracking ...



(III) Field monitoring



↑ The location of the 2018 Baige Landslide and the view of the landslide at the ground-based SAR field monitoring site. ↗ The geocoded LOS mean deformation rate map by the GB radar.

More Details: (1) Xiao, Ruya, et al. General Survey of Large-scale Land Subsidence by GACOS-Corrected InSAR Stacking: Case Study in North China Plain, Proc. IAHS, 2020. (2) Li, Yongsheng, et al. Detecting the slope movement after the 2018 Baige Landslides based on ground-based and space-borne radar observations, Int J Appl Earth Obs, 2020.