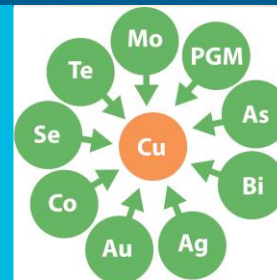


Energy Critical Element and Precious Metal Department in Cu-(Fe) Sulphides from the Bingham Canyon Porphyry Cu-Mo-Au deposit



iCRAG
IRISH CENTRE FOR RESEARCH
IN APPLIED GEOSCIENCES



Maurice Brodbeck, Sean McClenaghan,
Patrick Redmond and Balz Kamber*

Presentation by Maurice Brodbeck, PhD



Ireland's European Structural and
Investment Funds Programmes
2014-2020
Co-funded by the Irish Government
and the European Union



European Union
European Regional
Development Fund

Science
Foundation
Ireland **sfi**
For what's next



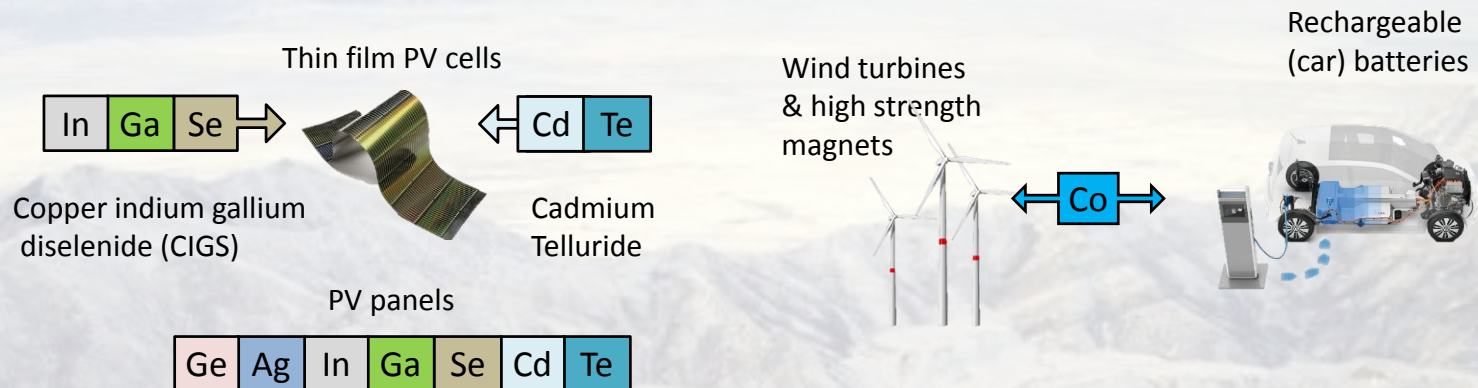
**Trinity
College
Dublin**

The University of Dublin



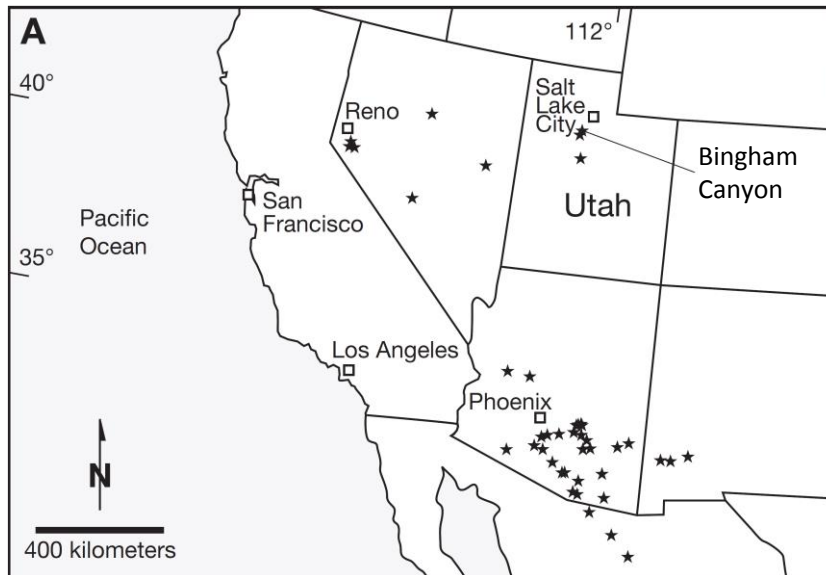
Research Outline

- Porphyry Cu systems contain 'Energy Critical Elements' (ECEs) required for energy related technologies

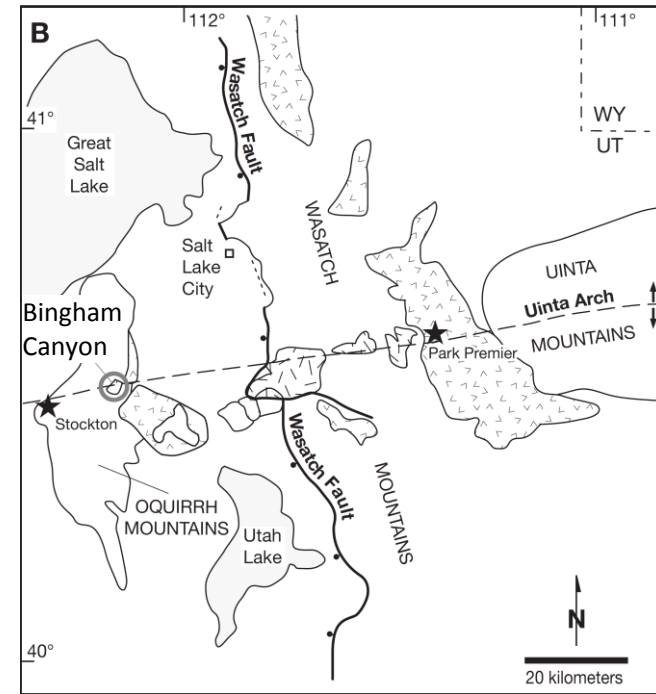


- For example, 90% of the Tellurium is produced in the copper refining process from anode slimes
- Limited understanding of the mineralogy of ECEs and penalty elements in copper ores
-> Effective extraction, processing and refining of ECEs is highly constrained
- Research target: Deportment of ECEs and precious metals in Cu-(Fe) sulphides from Bingham Canyon
ECEs and precious metals: Co, Ag, Au, Te, Se, Ge, Ga, In
Potential Penalties: As, Cd, Sb, Bi, (Se)
- Methods: LA-ICP-MS and SEM-EDS

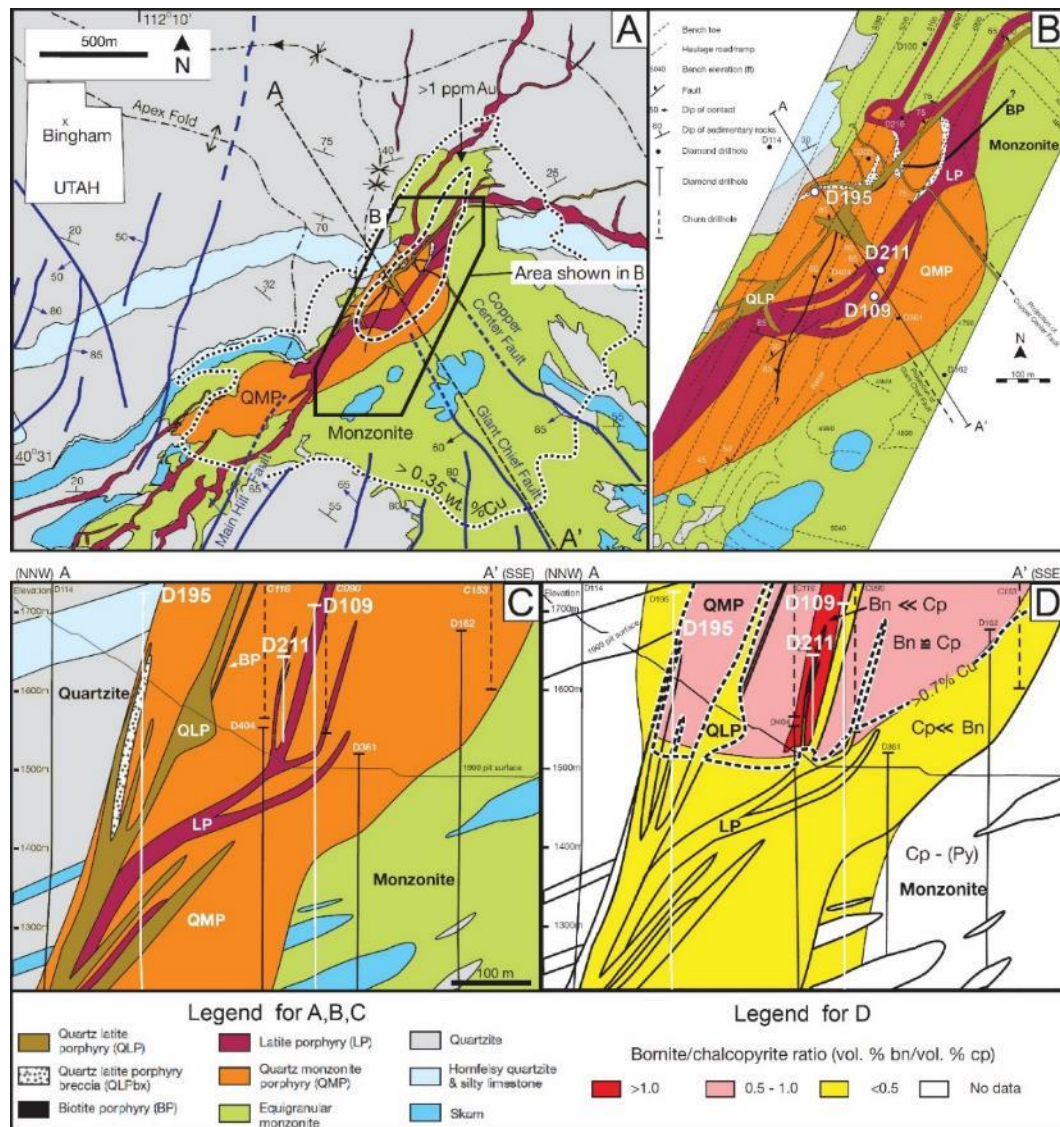
Bingham Canyon Porphyry Cu-Mo-Au Deposit



Location maps modified from Babcock et al. 1995 & Gruen et al. 2010



- Bingham Canyon is one of the largest and high-grade orebodies in the world
- The deposit is located in the Oquirrh Mountains in northern Utah on the Uinta Arch
- It belongs to a belt of Eocene to Oligocene intrusions and coeval volcanics
- Deposit formation occurred after a change from regional compression to extension in the mid-Eocene
- Centred on the Bingham Stock, a 2 by 2 km multiphase intrusion, emplaced into Palaeozoic siliciclastics and carbonates



- Study focused on the high grade zone (>1% Cu and >1 ppm Au) on NW side of the deposit
- The oldest intrusion is an equigranular monzonite
- Followed by five distinct crosscutting porphyry phases:
- Quartz Monzonite Porphyry (QMP) is the earliest and volumetrically largest porphyry, contains the highest Cu and Au grades
- Latite Porphyry (LP), set of subparallel NE trending dikes
- Biotite Porphyry (BP) and Latite Porphyry Breccia (QLPbx), narrow dikes only have minor occurrences
- Quartz Latite Porphyry (QLP) is the latest porphyry, truncating all earlier intrusions

Geology and Cu-Fe sulphide ratios at Bingham Canyon, modified after Redmond & Einaudi 2010

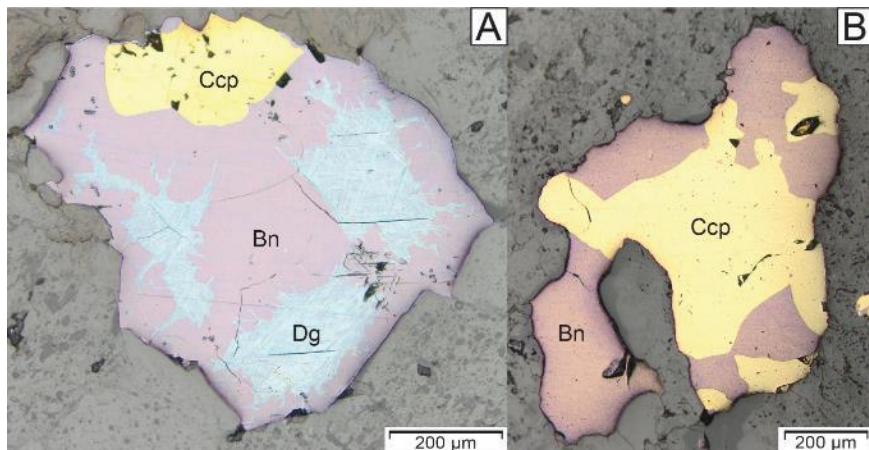


Alteration and Mineralisation

- Alteration: Inner potassic alteration zone \pm coincides with the copper orebody, outer propylitic zone, late argillic overprint, sericitic alteration is limited
- Each porphyry phase has an associated sequence of quartz veins, sulphide mineralisation and potassic alteration
- The majority of Cu-(Fe) sulphides occur in microfractures and vugs, created by retrograde dissolution of earlier quartz
- Previous microthermometric studies on fluid inclusions (Redmond & Einaudi 2010) indicated that sulphide deposition from high salinity brines occurred at 400 to 350°C at near hydrostatic P ~200 bars
- Alteration intensity, vein abundance, mass of introduced copper and gold decreased through time
-> interpreted as an effect of metal depletion in the underlying magma chamber

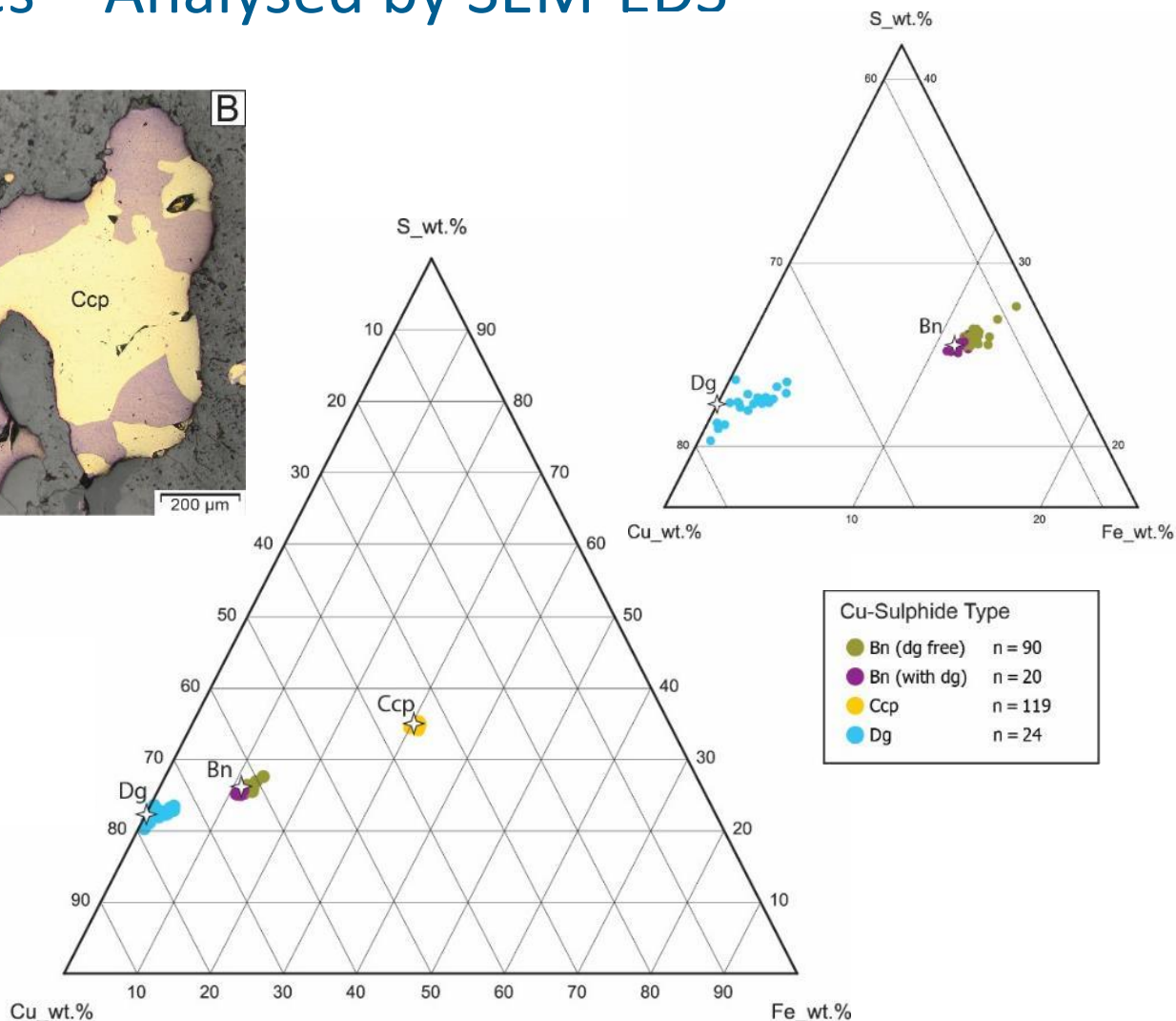


Cu-(Fe) Sulphides – Analysed by SEM-EDS



Cu-(Fe) sulphide ore minerals:

- Chalcopyrite (Ccp) – CuFeS_2
- Bornite (Bn) – Cu_5FeS_4
- Digenite (Dg) – Cu_9S_5
as exsolution within bornite



S-Cu-Fe triplots of compositional data, acquired by SEM-EDS analysis of Cu-(Fe) sulphides from Bingham Canyon

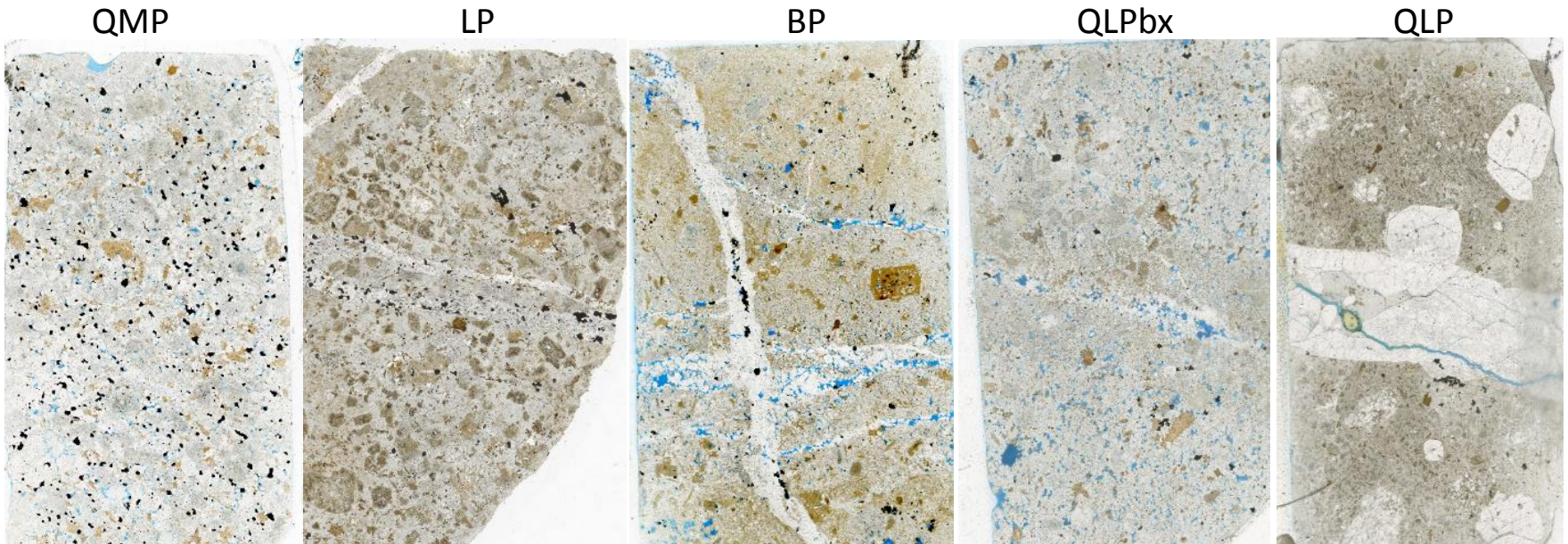


Cu-(Fe) Sulphide Abundance

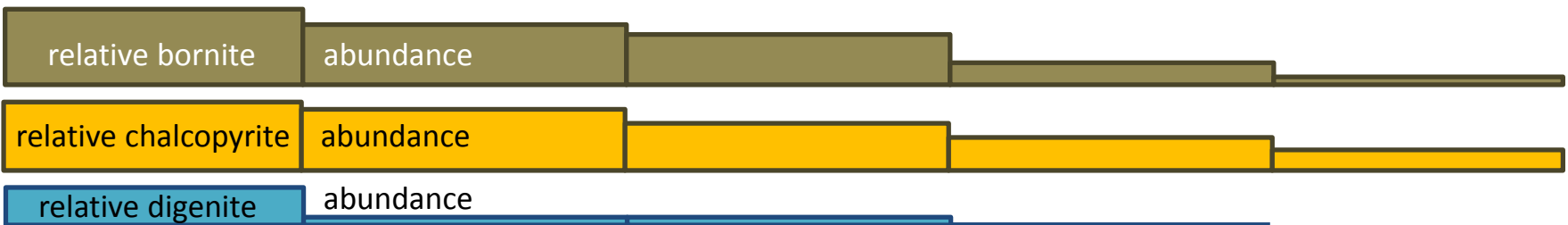
oldest

Porphyry

youngest



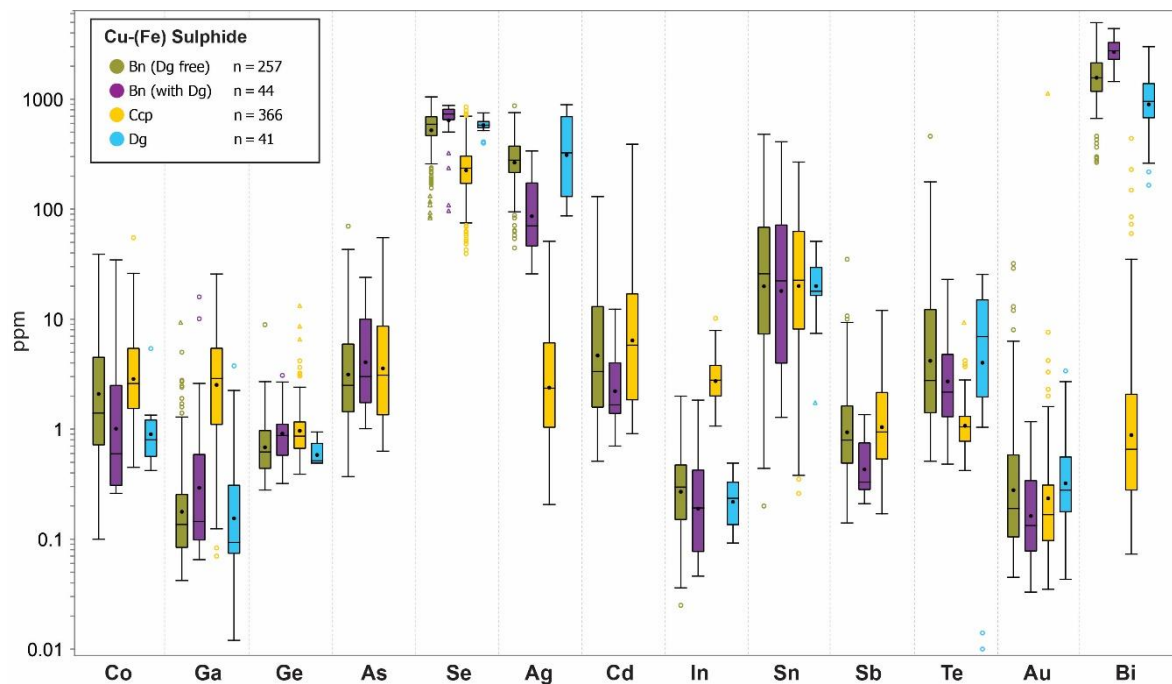
Decrease in Sulphide Mineralization



Simplified copper ore mineral abundance across the sequence of porphyry intrusions at Bingham Canyon.



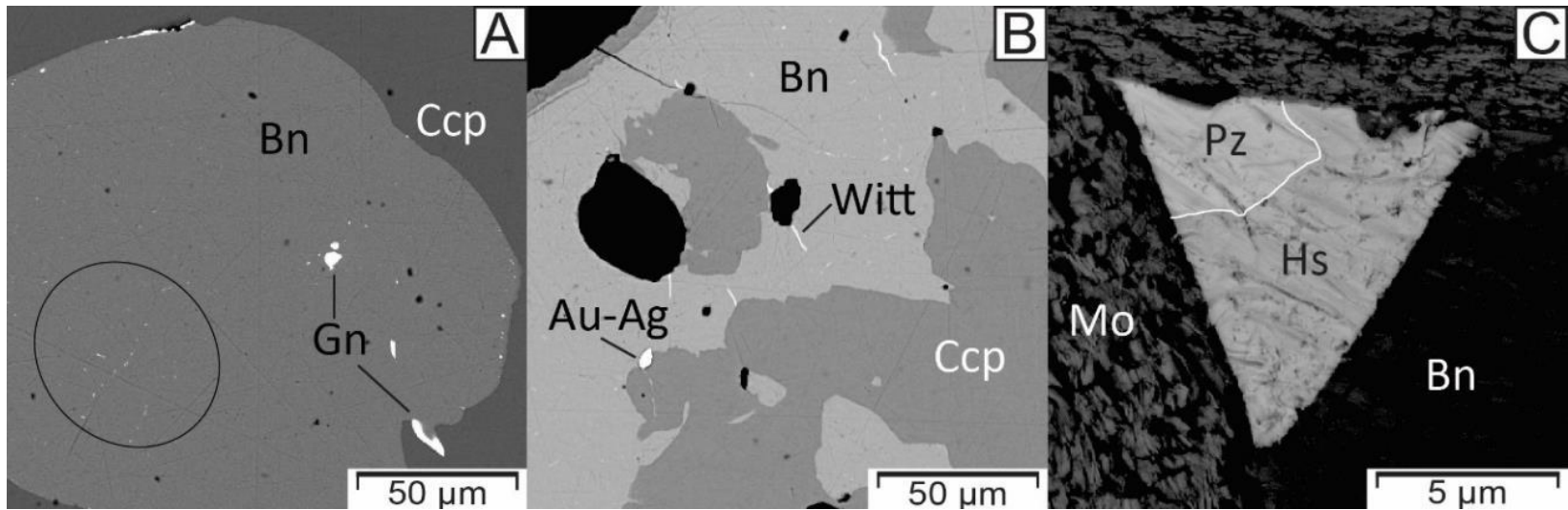
Trace Element Deportment - Analysed by LA-ICP-MS



Box and whisker plots of trace metal(oids) in Cu-(Fe) sulphides from the NW zone of the Bingham Canyon porphyry deposit

- Bornite is the major host for Se, and Bi and is an important silver carrier
- Chalcopyrite is the primary host for Co, Ga, Ge and In
- Digenite yields highest conc. of Ag, Te and gold and significant Se and Bi contents
- Deleterious elements: As, Cd and Antimony generally below 10 ppm, 100s of ppm Se and a few 1000 ppm Bi especially in bornite ± digenite rich ore

Trace Metal(loid) Residence – Accessory Minerals



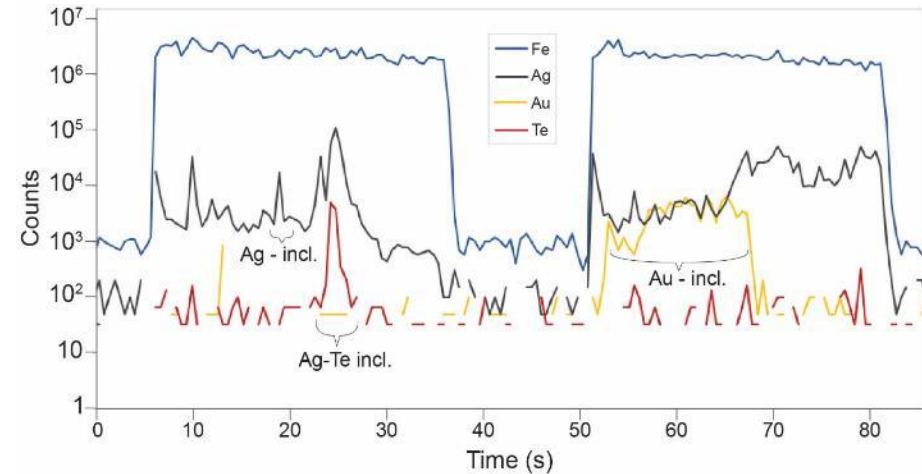
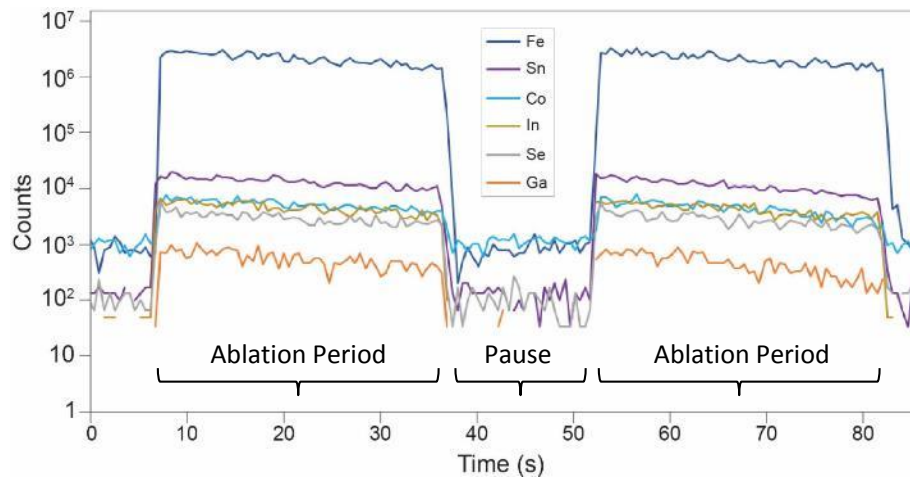
BSE (backscattered electron) images of micron - to nano - scale mineral phases with wt. % levels of precious or critical metal(oids).

Compositions of accessory minerals with wt. % levels of precious or critical metal(oids).

Mineral	Wittichenite (Witt)	Petzite (Pz)	Hessite (Hs)
Chemical Formula	Cu_3BiS_3	Ag_3AuTe_2	Ag_2Te

- Aside from Cu-(Fe) sulphides, accessory minerals contain wt. % levels of precious or critical metal(oids). These are: Se-rich galena, Ag-and Au tellurides (hessite, petzite), electrum and wittichenite
- Electrum grains are the primary hosts of the gold budget at Bingham (Redmond, 2002)
- Tellurides were observed at similar abundance and thus likely control the Te budget at Bingham
- Selenium and Bi occur at levels of 100s to 1000s of ppm in Cu-(Fe) sulphides
- > Galena and wittichenite with minor contribution to Se and Bi budgets, respectively

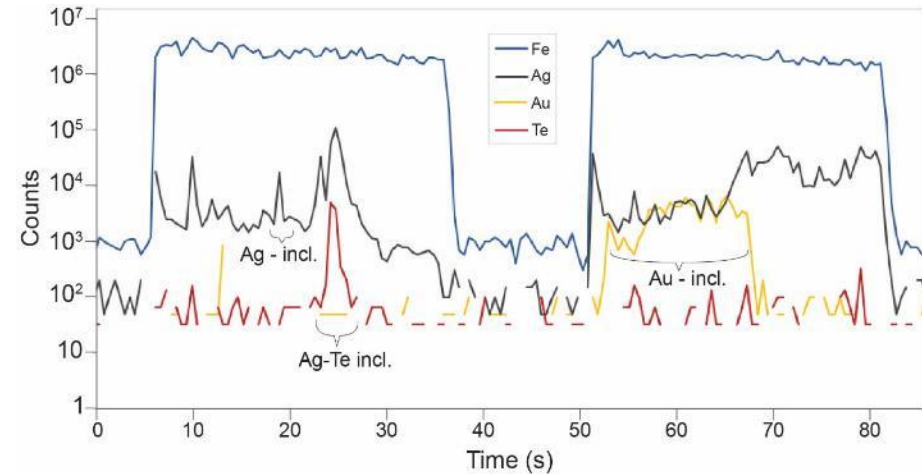
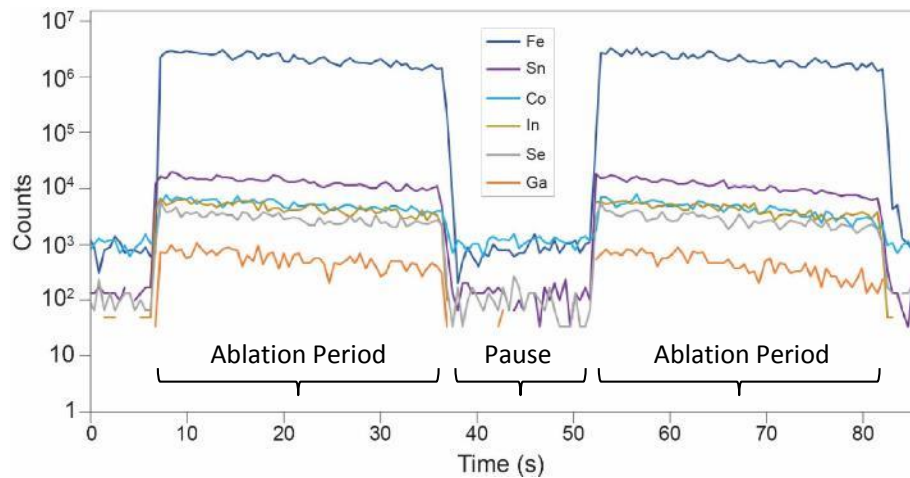
Trace Metal(oid) Residence in Cu-(Fe) Sulphides



Time-resolved LA-ICP-MS profiles of 30s spot ablations on chalcopyrite, separated by 15s signal washout periods.

- The mode of trace metal residence was determined from time-resolved spot laser ablation profiles.
- Trace element ablation profiles that mirror the downhole ablation profiles of major elements (Cu, Fe, S) in Cu-(Fe) sulphides indicate a homogenous distribution within the crystal → lattice residence
- Distinct peaks in the signal indicate heterogeneous distribution → distinct inclusions of other minerals

Trace Metal(loid) Residence in Cu-(Fe) Sulphides



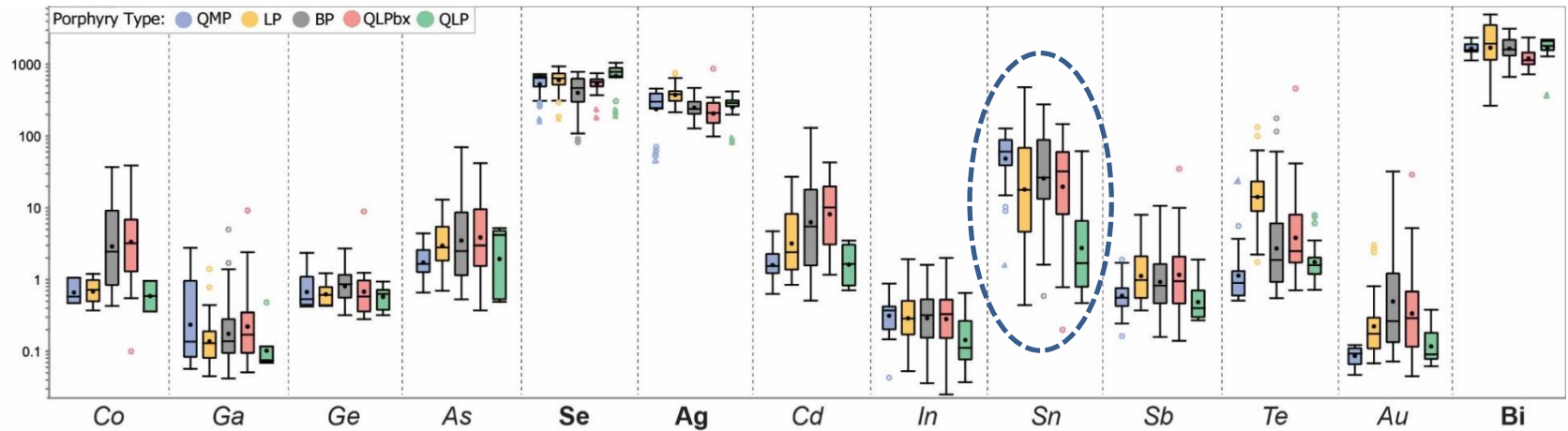
Time-resolved LA-ICP-MS profiles of 30s spot ablations on chalcopyrite, separated by 15s signal washout periods.

- Ge, As, Cd, Sb and Au are exclusively represented by inclusions in Cu-(Fe) in sulphides
- Se is homogeneously distributed in chalcopyrite, bornite and digenite
- In chalcopyrite, lattice residence is indicated for Co, Ga, Se, In and Sn
- In bornite, lattice residence is indicated for Se, Ag and Bi
- In digenite, lattice residence is indicated for Se, Ag, Sn and Bi

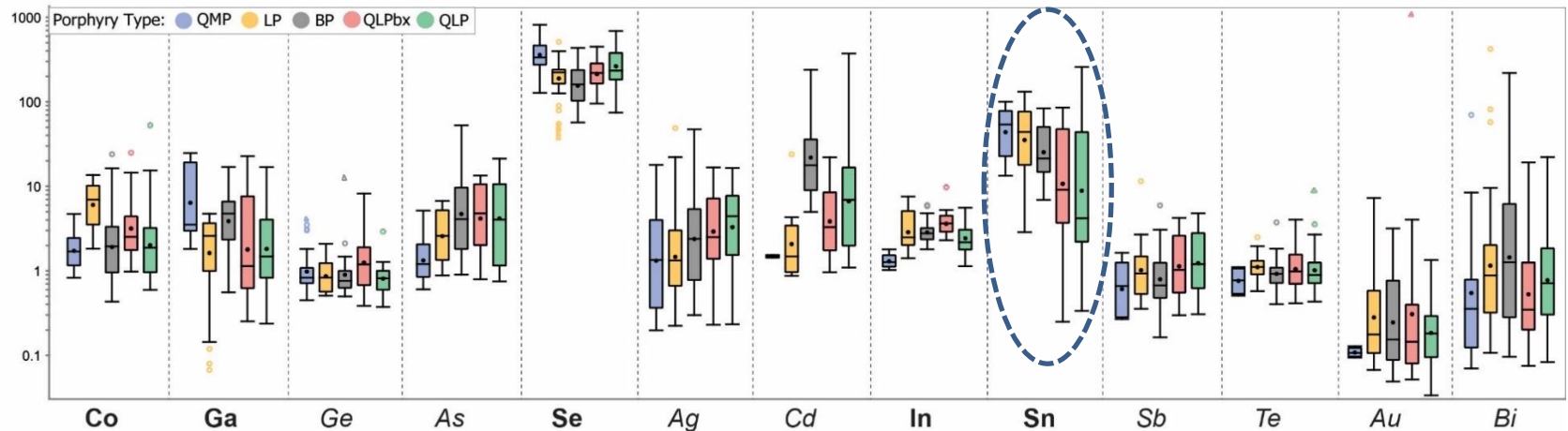


Trace Element Department – by Porphyry Generation

Bn



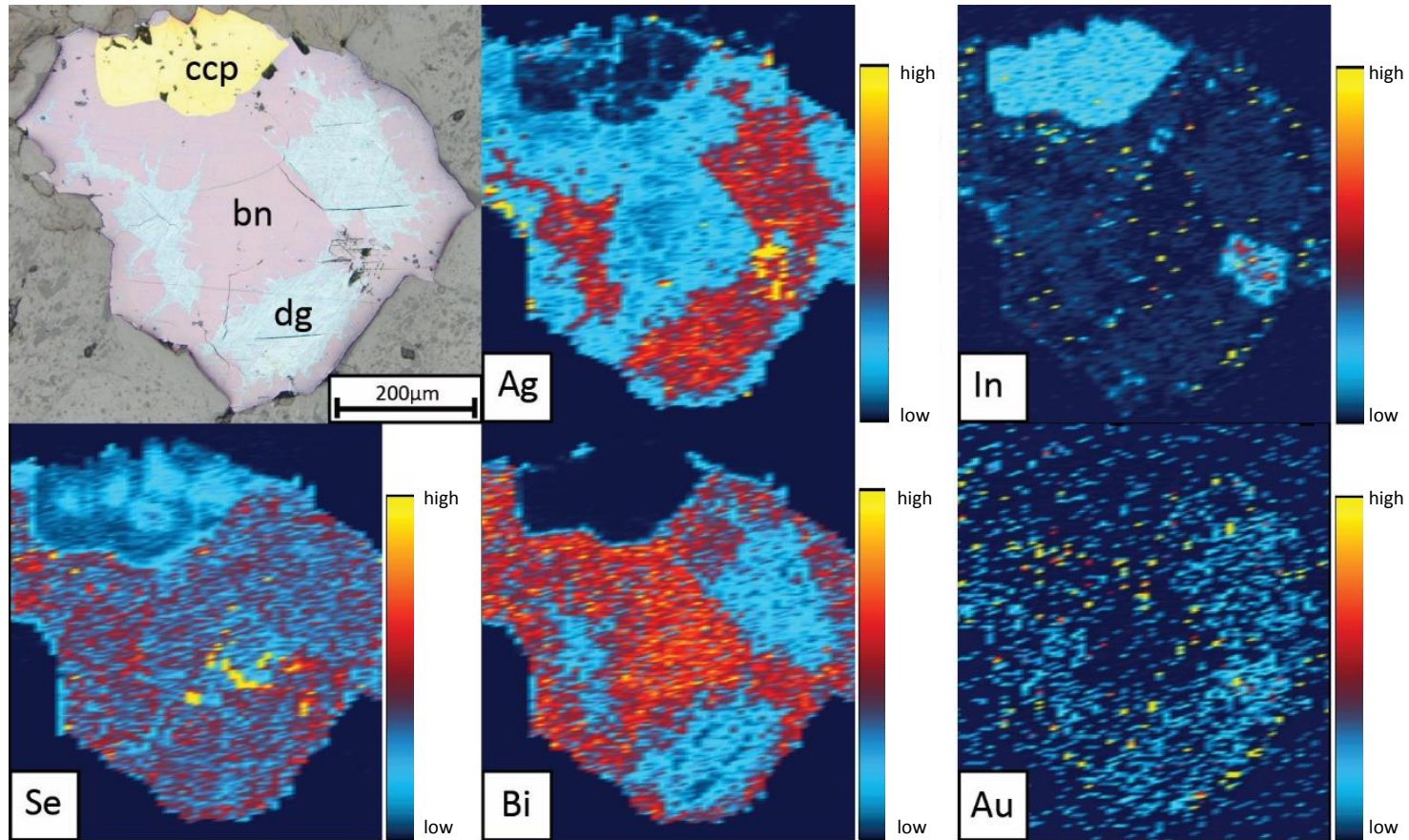
Ccp



Box and whisker plots of trace metal(loid)s in digenite-free bornite (top image) and chalcopyrite (bottom image) by porphyry type in sequence from oldest to youngest intrusion. Lattice-bound elements are highlighted in bold font, while elements in italic font are most commonly inclusion-dominated in their host phases. Except for Sn, clear trends over the sequence of porphyry intrusions are not apparent in both digenite-free bornite and chalcopyrite.



LA-ICP-MS Mapping of Cu-(Fe) Sulphides



LA-ICP-MS element distribution maps of a bornite (bn) – digenite (dg) – chalcopyrite (ccp) composite crystal. A reflected light image of the mapped area is shown in the top left. The illustrated maps are semi-quantitative and highlight relative concentration contrasts.

ECE and precious metal deportment:

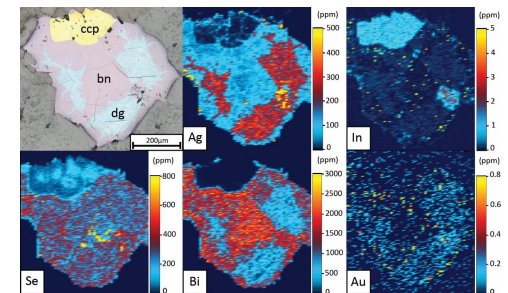
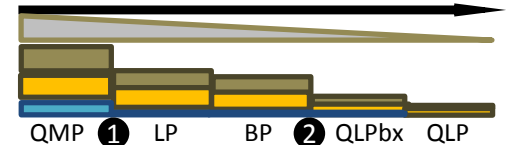
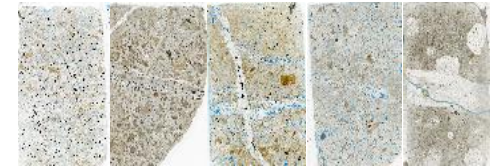
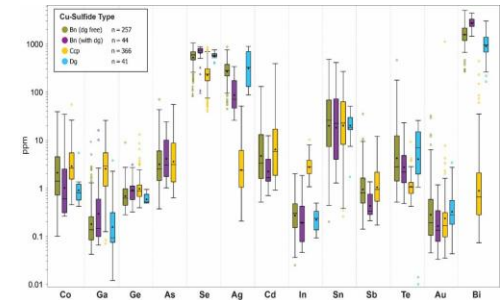
- Metal(oids) residing in the lattice of their host sulphides yield generally highest contents
- Cu-(Fe) sulphide ratios determine the element budgets for the majority of ECEs:
- Abundance of digenite and bornite primarily controls the Ag and the Bi and significantly the Se and Te budget
- Chalcopyrite abundance predominantly controls the Co, Ga and In budget
- Presence of electrum and Ag-(Au) tellurides governs the Au, and tellurides most likely also control the Te budget

Systematics from oldest to youngest porphyry:

- Oldest porphyry (QMP) with highest trace metal(loid) inventory: highest sulphide + electrum abundance
- Two major drops in sulphide abundance: ① QMP to LP ② BP to QLPbx
- Constant chemistry of mineralising fluids: Except for Sn, no clear change of trace element contents with porphyry age was recorded

Metal partitioning between digenite and bornite (during exsolution process):

- Se equally distributed → substitutes for S in the lattice
- Ag, Au and Te preferentially partition into digenite
- Bi is largely retained in bornite



References:

Babcock, R.C., Ballantyne, G.H., Phillips, C.H., 1995. Summary of the geology of the Bingham district, Utah. Arizona Geol. Soc. Dig. 20, 316–335.

Gruen, G., Heinrich, C.A., Schroeder, K., 2010. The Bingham Canyon porphyry Cu-Mo-Au deposit. II. Vein geometry and ore shell formation by pressure-driven rock extension. Econ. Geol. 105, 69–90.

Redmond, P.B., 2002. Magmatic-hydrothermal fluids and copper-gold ore formation at Bingham Canyon, Utah. Ph.D. Thesis, Stanford Univ. 228 pp

Redmond, P.B., Einaudi, M.T., 2010. The Bingham Canyon porphyry Cu-Mo-Au deposit. I. Sequence of intrusions, vein formation, and sulfide deposition. Econ. Geol. 105, 43–65.

With support from

This presentation has emanated from research supported in part by a research grant from Science Foundation Ireland (SFI) under Grant Number 13/RC/2092 and is co-funded under the European Regional Development Fund and by iCRAG industry partners.

lundin mining

Teck



Geological Survey
Suirbhéireacht Gheolaíochta
Ireland | Éireann

