

# Effects of snow cover on CO<sub>2</sub> production and microbial composition in a thin topsoil layer

Dalia López<sup>1,2</sup>, Francisco Matus<sup>2,3</sup>, Carolina Merino<sup>2,3,4</sup>.

<sup>1</sup>Doctorate Program in Science of Natural Resources, La Frontera University, Temuco, Chile

<sup>2</sup>Laboratory of Conservation and Dynamic of Volcanic Soils, Department of Chemical Sciences and Natural Resources, Universidad de La Frontera, Temuco, Chile.

<sup>3</sup>Network for Extreme Environmental Research (NEXER) Universidad de La Frontera, Temuco, Chile.

<sup>4</sup>Center of Plant, Soil Interaction and Natural Resources Biotechnology. Scientific and Technological Bioresource Nucleus (BIOREN), Universidad de la Frontera, Temuco, Chile.

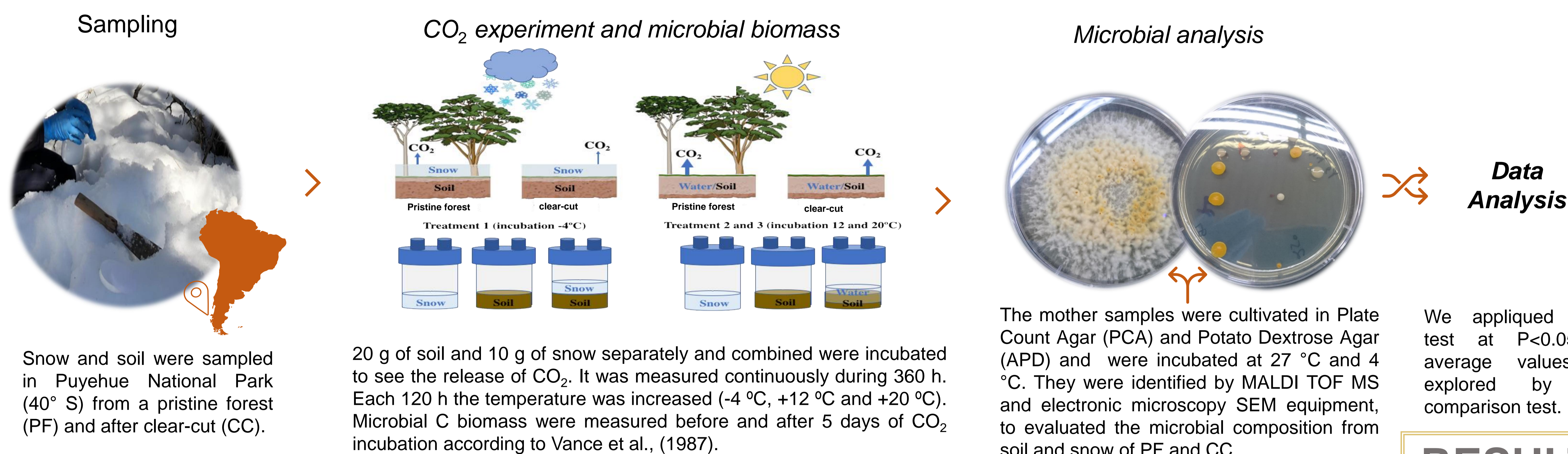
carolina.merino@ufrontera.cl

## INTRODUCTION

Temperate rain forest soils (>8000 mm yr<sup>-1</sup>) of south of Chile are intensively affected by early and fast snow melting due to increasing climate variability in the last 20 years (Weatherspark, 2016). Most of these volcanic forests soils are unpolluted (pristine) and receive seasonal snow-cover, that contains aerosols, nutrients and microorganisms from circumpolar south west winds (Alfonso et al., 2019). We hypothesized that these inputs during the snow melting generate a change on nutrient availability at the shallow layer for soil microbiology and biochemistry processed. This may affect in turn, soil properties and the capacity for soil carbon sequestration. The objectives of the study were to evaluate the impact of snow melting on microbial and chemical properties of a topsoil in a pristine rainforest.

## METHODS

Figure 1. Materials and Methods description



## RESULTS

Table 1. Soil and snow characteristics measurements.

Analysis	Units	Pristine forest (PF)		Clear-cut (CC)	
		Soil	Snow	Soil	Snow
<sup>1</sup> TOC	%	11.4 ± 0.3	6.1 ± 4.8	4.6 ± 0.5	5.1 ± 3.7
N total	%	0.6 ± 0.03	0.3 ± 0.1	0.22 ± 0.1	0.2 ± 0.02
C:N ratio	Unitless	19.1	15.6	20.1	25.5
pH water	Unitless	5.3 ± 0.2	5.7 ± 0.1	6.5 ± 0.3	5.8 ± 0.05
Redox	MVolt	343.6 ± 2.8	366.7 ± 24.6	332 ± 4.4	336 ± 8.2
Conductivity	us	19.2 ± 7.4	5.4 ± 0.9	5.7 ± 1.5	10.6 ± 0.2
<sup>2</sup> NO <sub>3</sub> <sup>-</sup>	mg L <sup>-1</sup>	3.0 ± 0.0	0.04 ± 0.1	ND	0.1 ± 0.01
NH <sub>4</sub> <sup>+</sup>	mg L <sup>-1</sup>	6.6 ± 0.0	0.05 ± 0.0	0.06 ± 0.0	0.11 ± 0.0
Si	%	7.8 ± 2.7	5.7 ± 1.8	26.2 ± 5.1	3.6 ± 2.8
Fe	%	2.3 ± 1.3	0.6 ± 1.6	12.4 ± 6.2	5.7 ± 3.1
<sup>3</sup> Texture	SCL			Sandy	

<sup>1</sup>Total soil organic carbon; <sup>2</sup>ND: Not determined; <sup>3</sup>SCL: sandy clay loam.

Total soil organic carbon (TOC) in pristine forest (PF) soil unlike the clear cut (CC) was 16 times higher, similar for Nitrogen, 0.5 vs 0.08%, (Table 1).

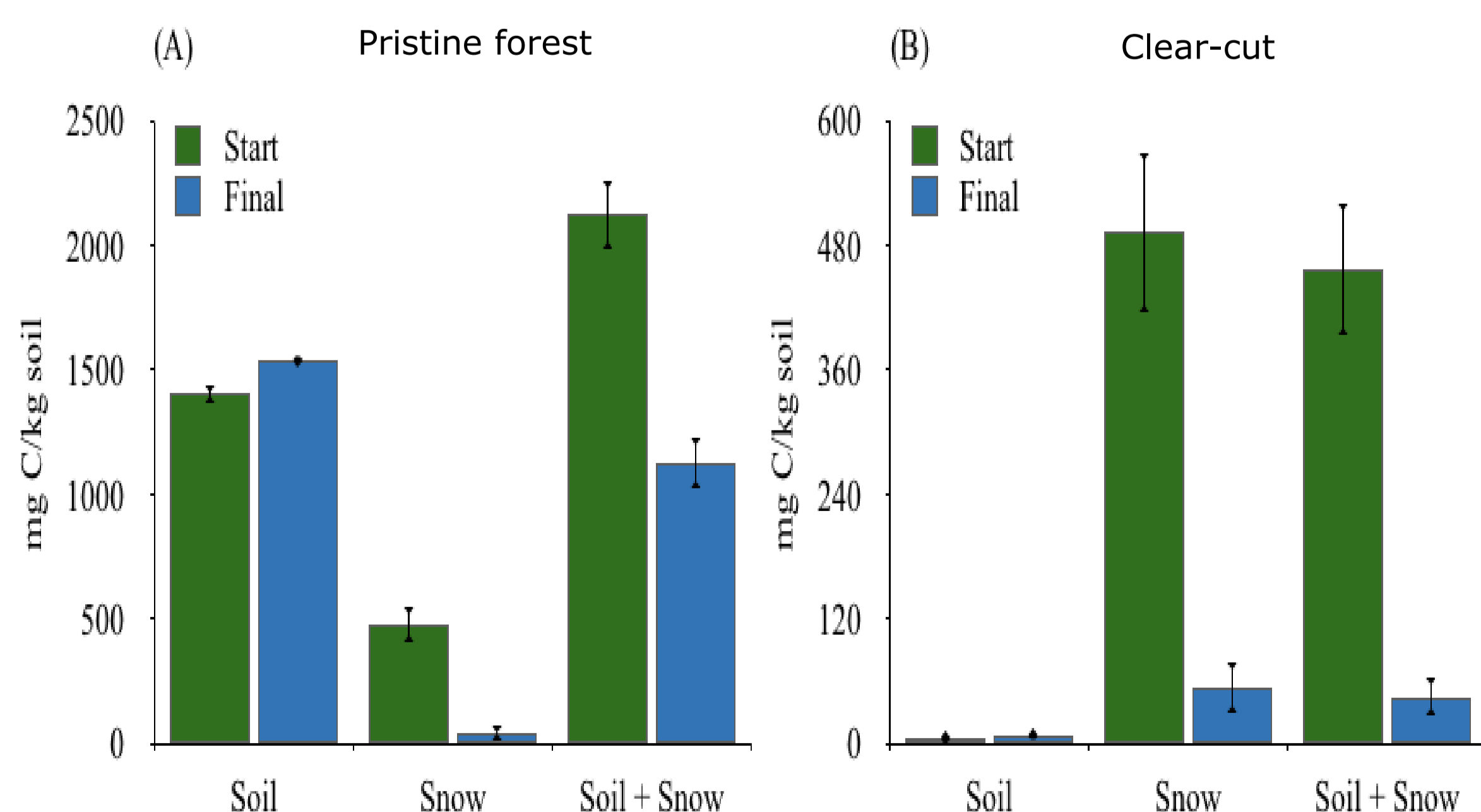


Figure 2. Soil and snow Microbial biomass of PF and CC to start and final of CO<sub>2</sub> experiment.

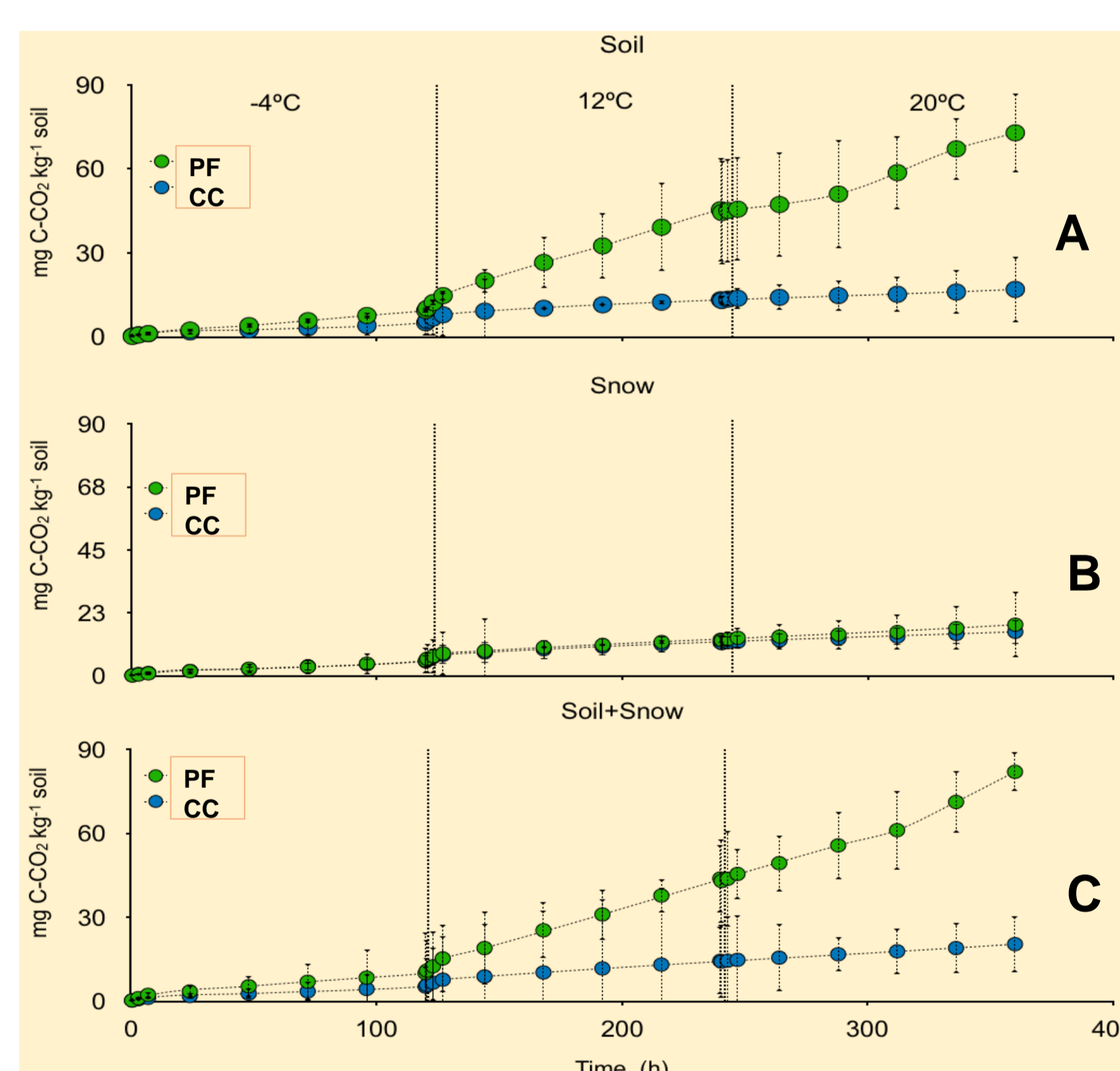


Figure 3. Cumulative CO<sub>2</sub> of (A) soil control (B) snow control (C) soil + snow from Pristine Forest and Clear-Cut.

Microbial biomass in soil+snow showed a marked difference between PF with 2122.8 ± 140.8 mg ml<sup>-1</sup> against 457.1 ± 63.9 mg ml<sup>-1</sup> in CC. These results agree with microbial count and the images observed by SEM due to, we found pollen and plant tissues debris that have been reported as source of C available for microbial activity (Freeman et al., 2009).

The temperature rise in soil+snow released more CO<sub>2</sub> in PF 81.9 mg CO<sub>2</sub> kg<sup>-1</sup> than that after CC 20.5 mg CO<sub>2</sub> kg<sup>-1</sup>. Soil texture has deeply influence on C release pattern. It means that more developed soils in the forest retain more organic matter and enhance biological soil properties that than in sandy soil.

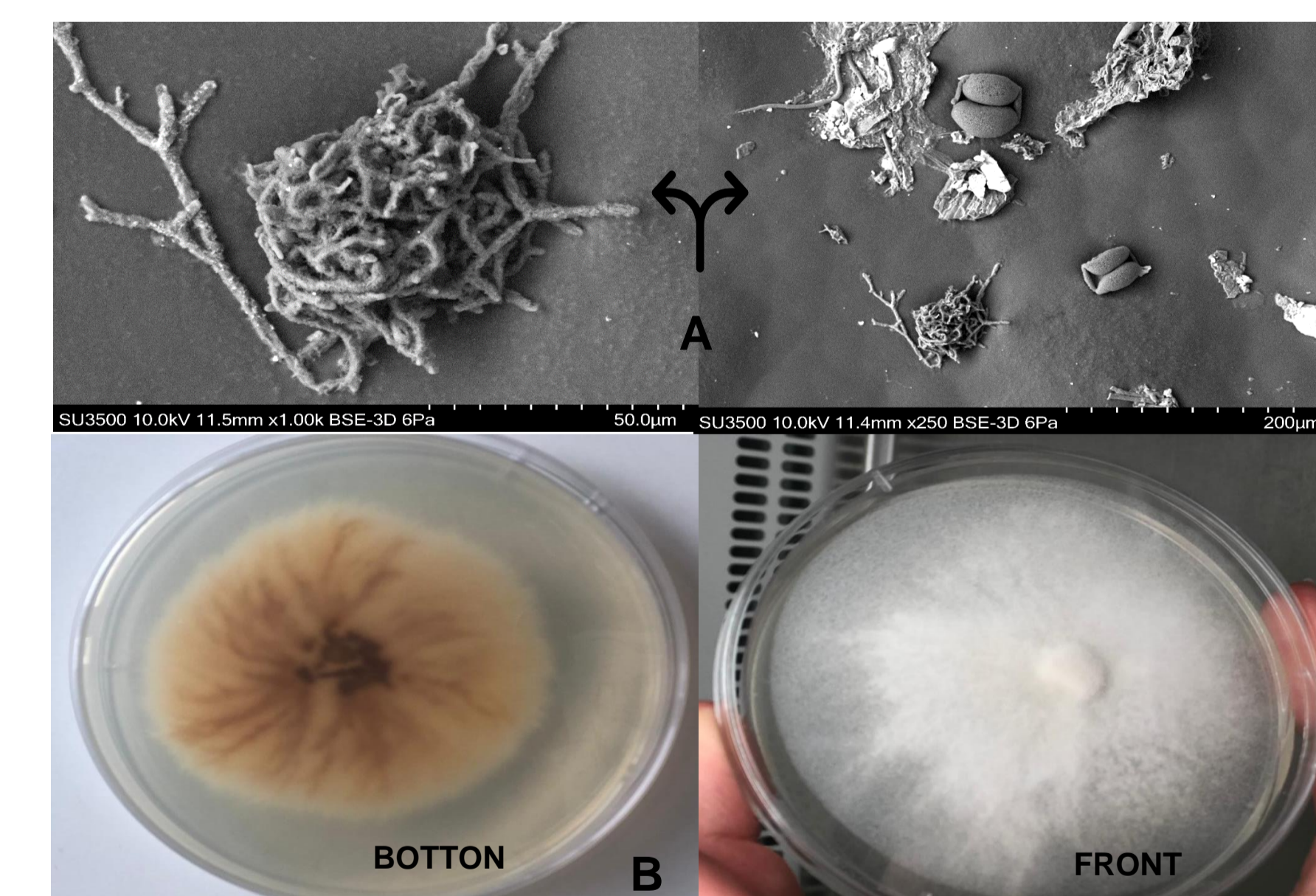


Figure 4. (A) SEM images of snow microbial debris. (B) Microbial isolation in plates.

It was observed fungi hyphae and bacteria (A). The identification by MALDI TOF reported for fungi *Thanatephorus* sp. and *Microsporium* sp. and *Fusarium* sp. and for bacterial colonies *Burkholderia* sp. and *Pseudomonas* sp (B).

## CONCLUSION

Soil texture and the accumulation of SOM play a crucial role on C mineralization. Gradually increase of soil temperature after freezing revealed that soils with certain amount of available C can maintain microbial population that response to change the temperature,

**Acknowledgment:** INACH Rt\_23\_17 (F.Matus), FONDECYT iniciación 11180521 (C. Merino). NEXER Project (F.Matus). Technical and Analytical Support – BIOREN Universidad de La Frontera.

**References:** Weatherspark. 2016. [Online]. Puyehue, Chile. En: <https://es.weatherspark.com/y/25116/Clima-promedio-en-Puyehue-Chile-durante-todo-el-a%C3%B1o#Sections-Sources>. Consulted on 27 June 2019; Alfonso, J., Cordero, R., Rowe, P., Neshyba, S., Cassasa, G., Carrasco, J., MacDonell, S., Lambert, F., Pizarro, J., Fernandez, F., Feron, S., Damiani, A., Llanillo, P., Sepulveda, E., Jorquera, J., Garcia, B., Carrera, J., Oyo-la, P. and Ming-Kang, C. 2019. Elemental and Mineralogical Composition of the Western Andean Snow (18°S–41°S). *Sci Rep* 9, 8130; Vance, ED; PC Brookes & DS Jenkinson. 1987. An extraction method for measuring soil microbial biomass. *Soil Biol Biochem.* 19: 703-707; Freeman K., et al. 2009. Evidence that chytrids dominate fungal communities in high-elevation soils. *PNAS* 106:18315–18320.