

# The 11 November 2018 Mayotte event was observed at the Iranian Broadband seismic stations

**Hossein Sadeghi<sup>1</sup> and Sadaomi Suzuki<sup>2</sup>**

<sup>1</sup>Department of Geology, Faculty of Science, Ferdowsi University of Mashhad, Mashhad, Iran

[sadeghi@um.ac.ir](mailto:sadeghi@um.ac.ir)

<sup>2</sup>Tono Research Institute of Earthquake Science, Association for the Development of Earthquake Prediction, Mizunami, Japan  
[suzuki@mail.tries.jp](mailto:suzuki@mail.tries.jp)

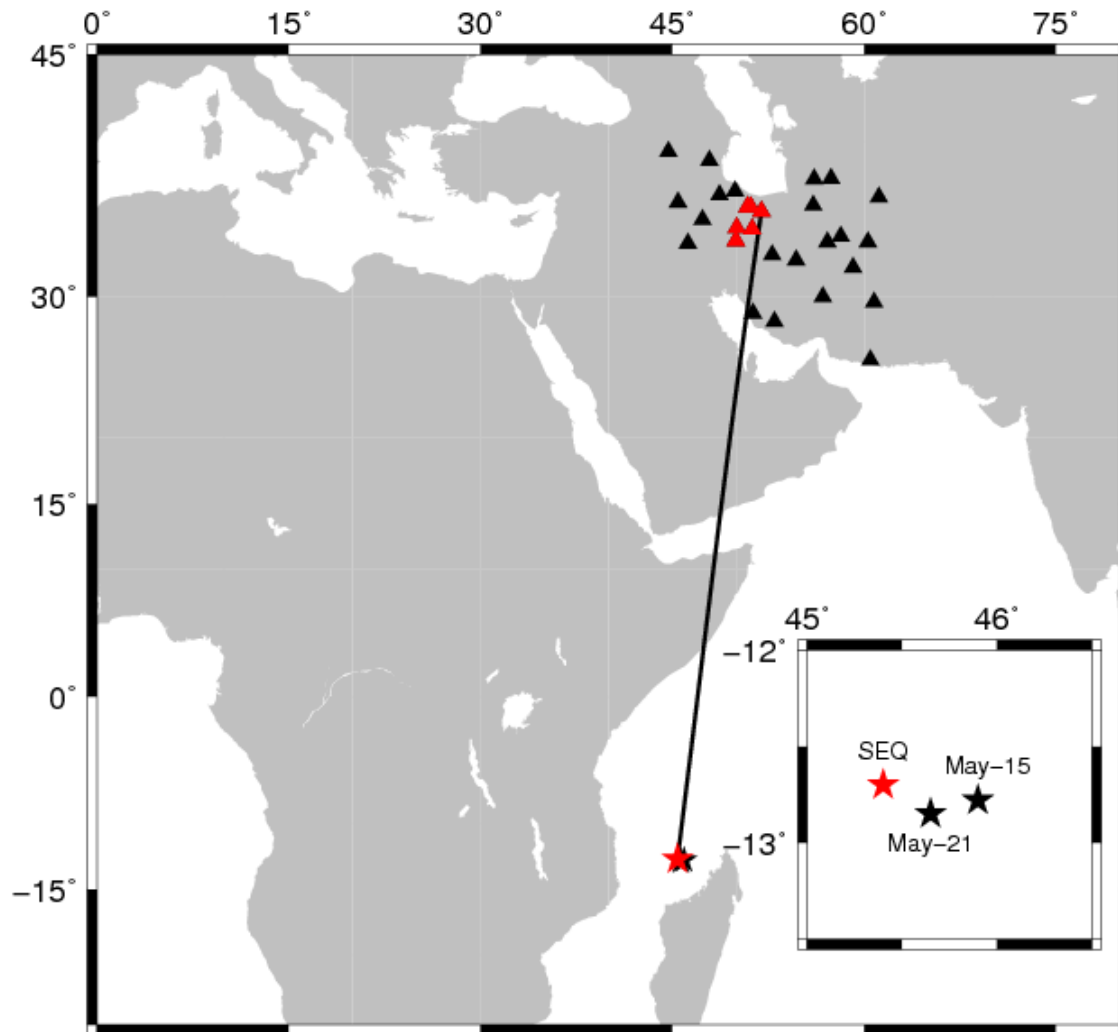


Figure 1. Location map of the Iranian broadband seismic stations (triangles) and the epicenters of SEQ (red star) and two regular earthquakes of May-15 and May-21 (black stars).

The phase velocities of surface waves were calculated by all the stations. The red triangles show the stations which were used for the semblance analysis. The line shows the great circle connecting the epicenter and the semblance array.

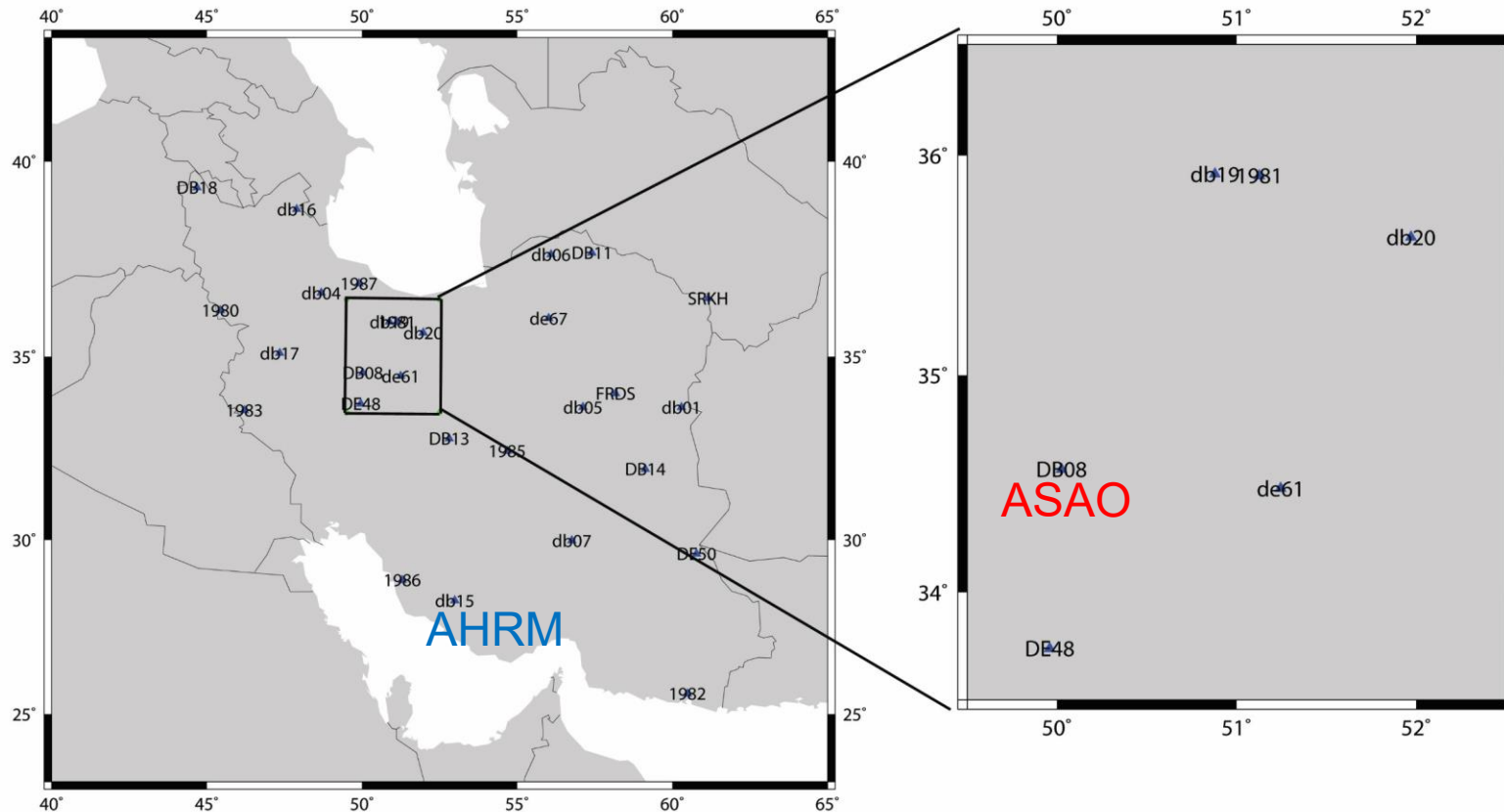


Figure 2. The seismic waveforms observed by station ASAO, written in red, are shown in Figure 3. The seismic waves and Fourier spectrum observed at AHRM, written in blue, are shown in Figure 4.

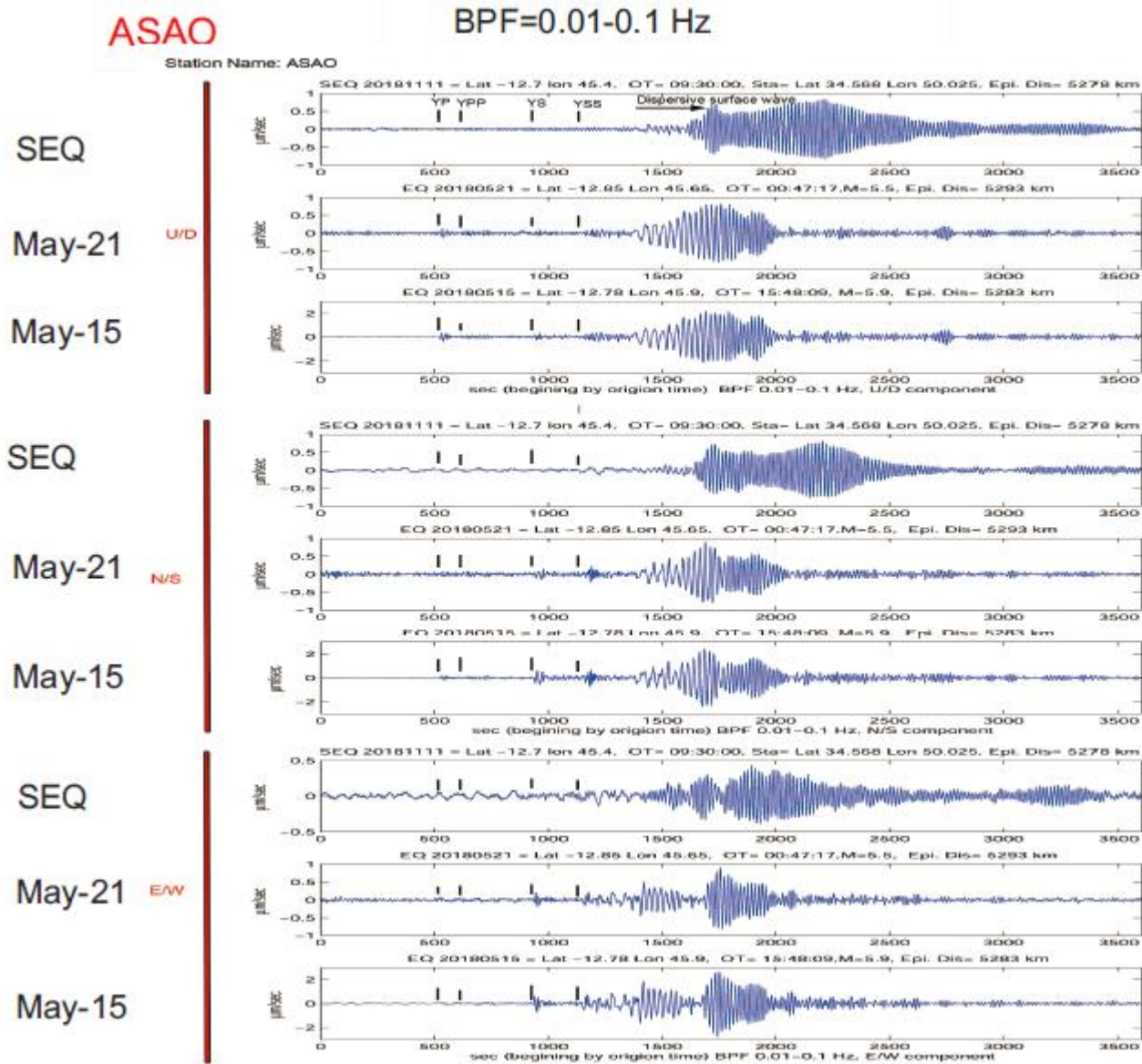


Figure 3. Comparison of the seismic waveforms of SEQ and two regular earthquakes, May-21 and May-15. The seismic waves are filtered in the band 0.01 to 0.1 Hz.

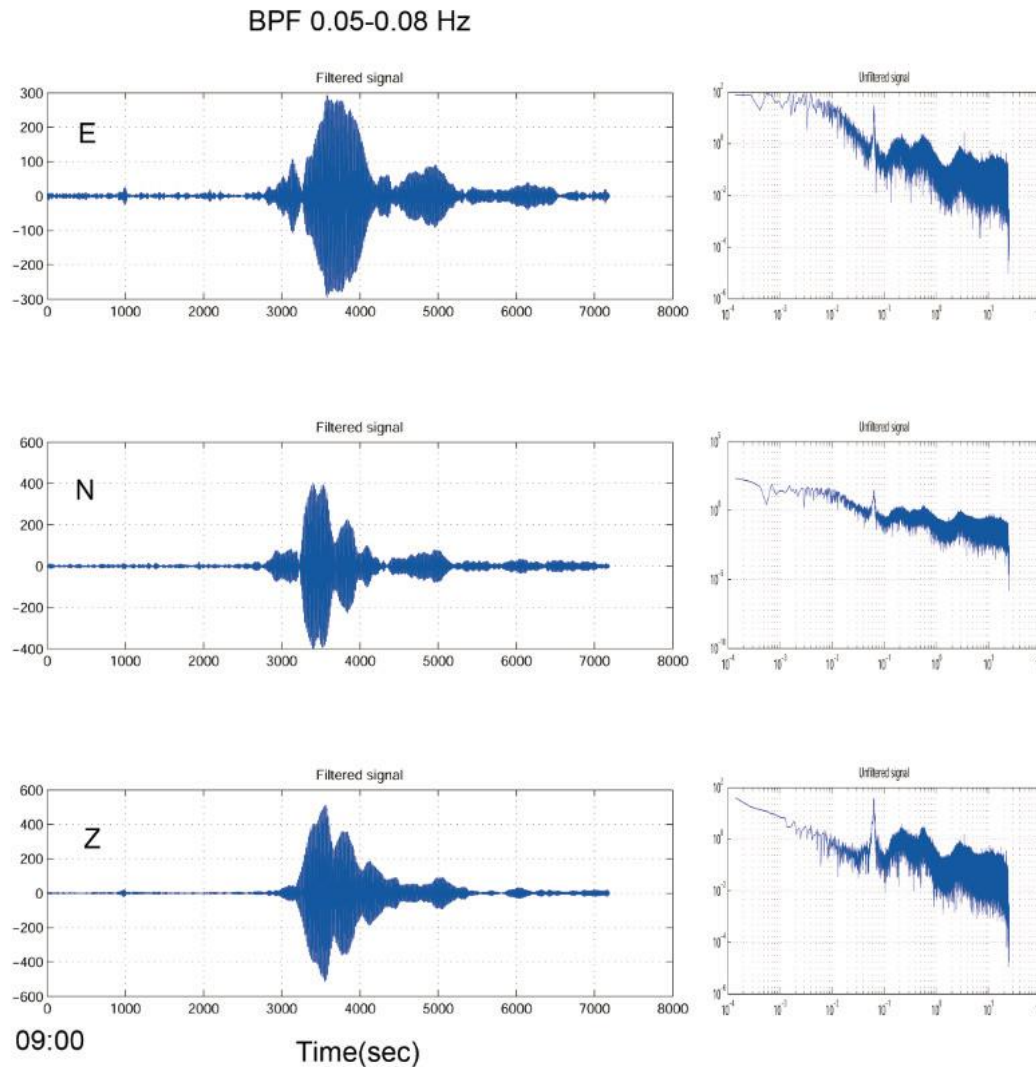


Figure 4. Fourier spectrum of SEQ signal observed at AHRM (28.854N, 51.295E). The peak of spectrum is at 0.062 Hz (16.1 sec/cycle).

Top: E-W component.

Middle: N-S component.

Bottom: U-D component.

### **Acknowledgments**

We used seismic data observed by the National Center of Broadband Seismic Network of Iran, International Institute of Earthquake Engineering and Seismology (IIEES).