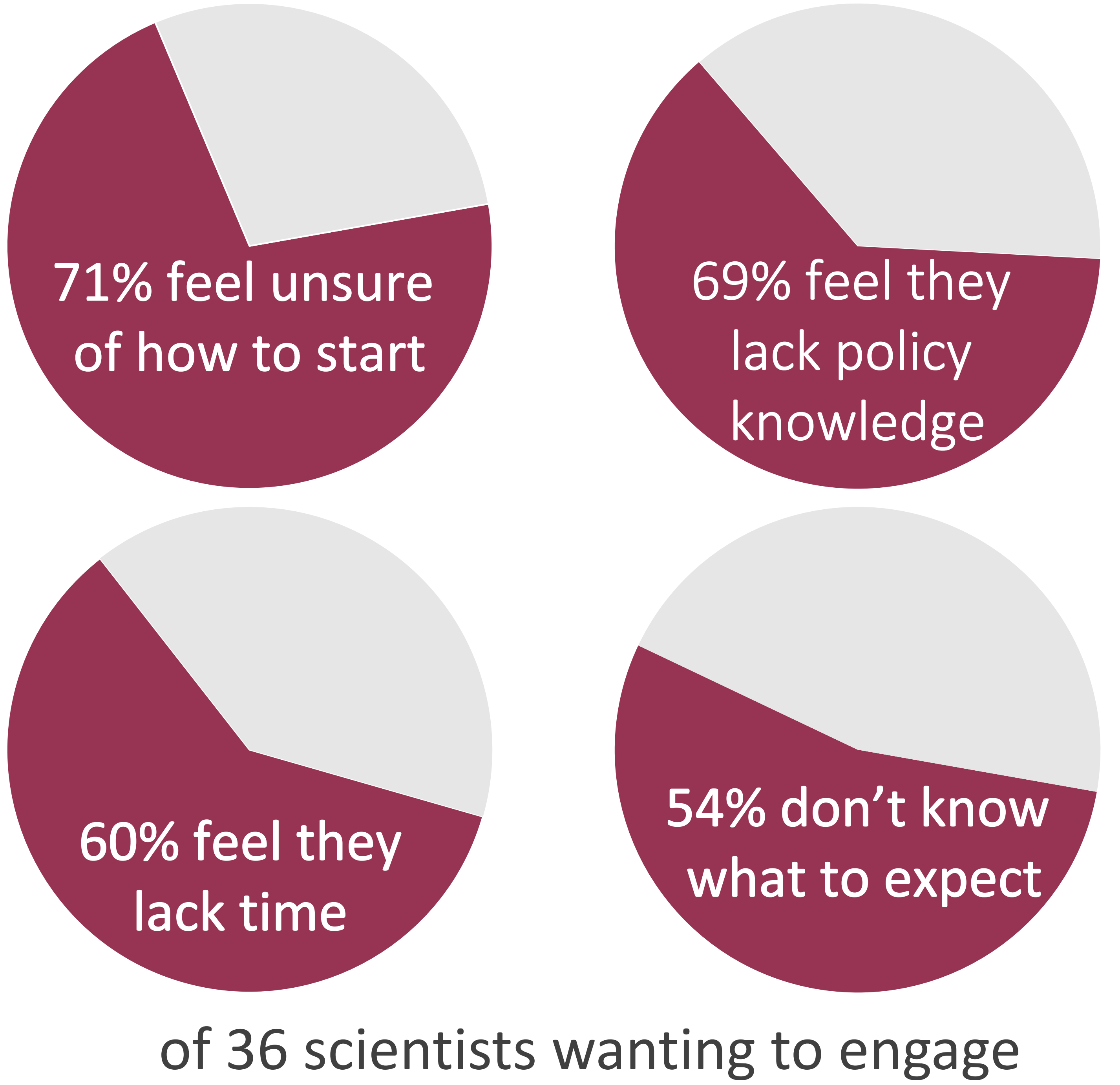


# Keeping Up Momentum: Advice for Early Career Scientists in Policy-making and Community Science

Caitlyn A. Hall, Ethan Howley, Evvan V. Morton, Erin Murphy, Hannah Bercovici, Kevin Tindell, J.P. Solves, Liza Kurtz, Mitchell Phillips, Jessie Bersson, Miranda Bernard, Blake Dirks, and Nicholas Weller



## What barriers do scientists feel when engaging with community leaders?



## Reach out to community leaders, government and agency officials

**Relationships are built in many ways**  
 The best way to start will depend on your goal, community, government, and culture

- Attend a public event with decision-makers
- Ask them to talk to your team, lab, or class
- Reach out to your professional group (like EGU Policy) – they might have someone in their network!
- Become a scientific expert for UNESCO, the EU, Thriving Earth Exchange, & more

## When communicating with decision-makers and community leaders...

- 1) **Your audience should never have to ask, “Why does this matter?”** – provide clear and concise context
- 2) **Your science is only addressing one issue** – Science is used to inform policy, but must balance with socioeconomic, political, etc. priorities
- 3) **Plan as much as you can, but be flexible** – Be prepared with a 1-minute pitch introducing yourself and your message
- 4) **Actually listen to what they’re saying** - They’re an expert on the problem, you’re an expert on the science

## Build relationships with other scientists

Arizona Science Policy Network’s (AzSPN) goal is to connect scientists & decision-makers

**Don’t go it alone, bring a colleague.**

## Learn from science policy and community science experts

- Learn from experts through seminars, training events, and short courses

**The best way to learn and build confidence is by doing**

**Your science policy ally might not hold the highest rank. Staff members have a direct line to decision-makers and can make magic happen.**



Allies Sen. Mendez (far left) and Rep. Salman (far right) with AzSPN’s Dr. Evvan Morton and Kevin Tindell

## Keep up contact! One-time connections fade and will have limited impact



It took time for ally Legislative Assistant Robert Nolan to reach out to us regularly for expertise

**For more information and help to engage in science policy: @CaitlynAHall @AzSciPolNet**

