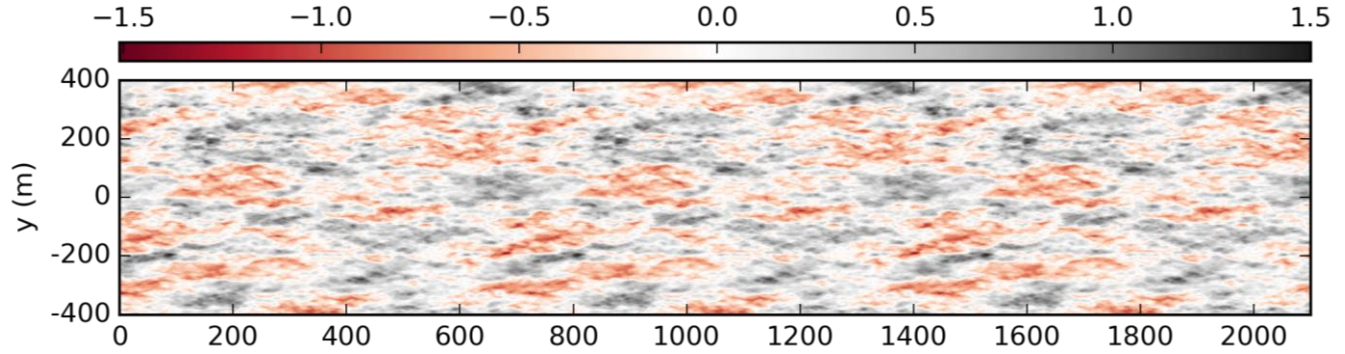


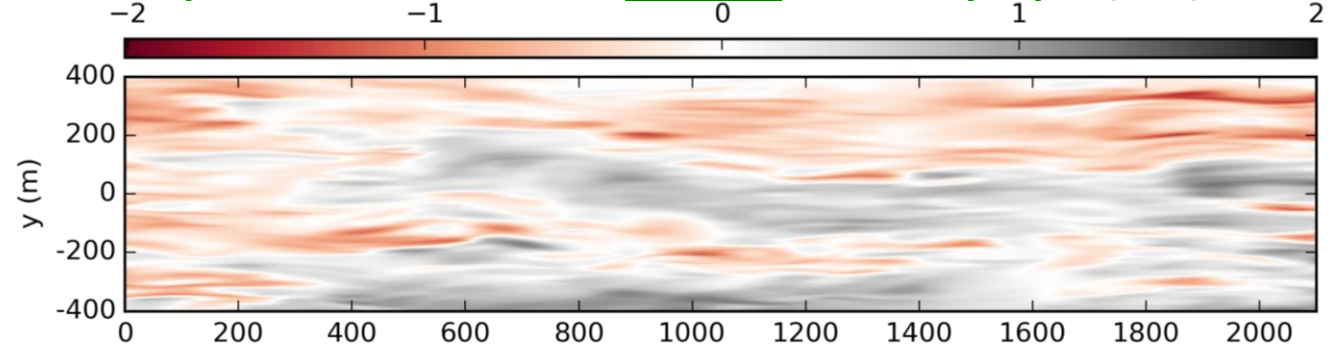


# Different inflow conditions for LES with wind turbines:

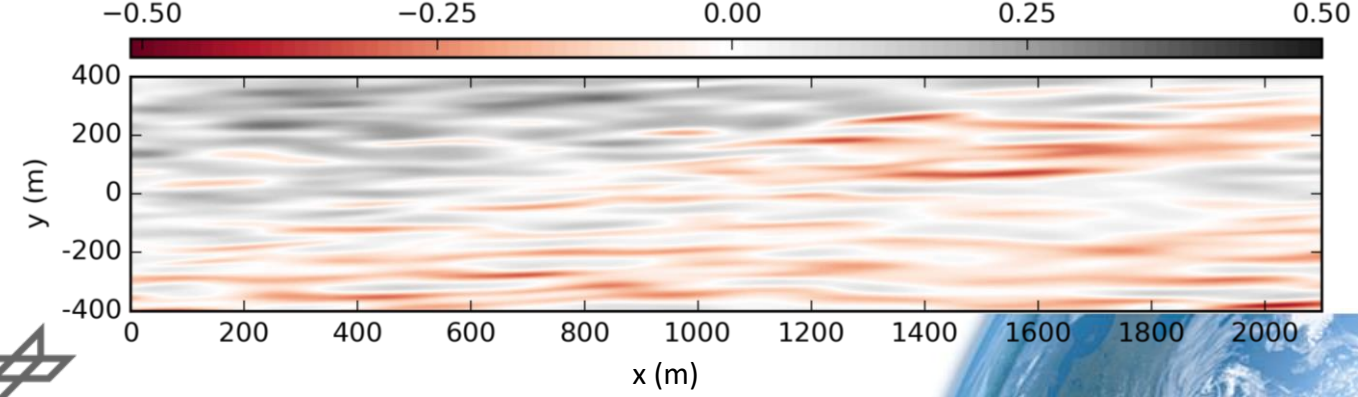
## Synthetic turbulence generated by the Mann model:



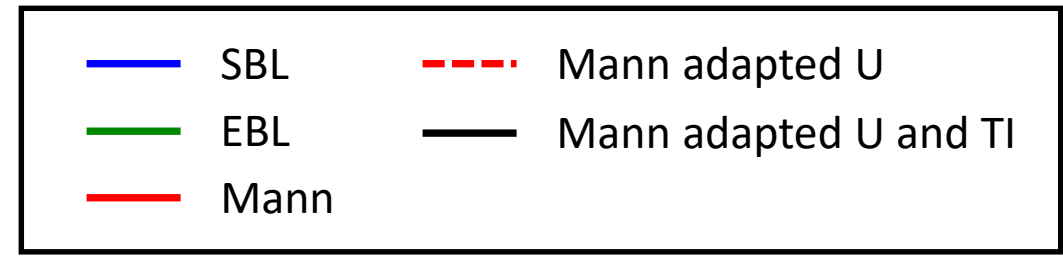
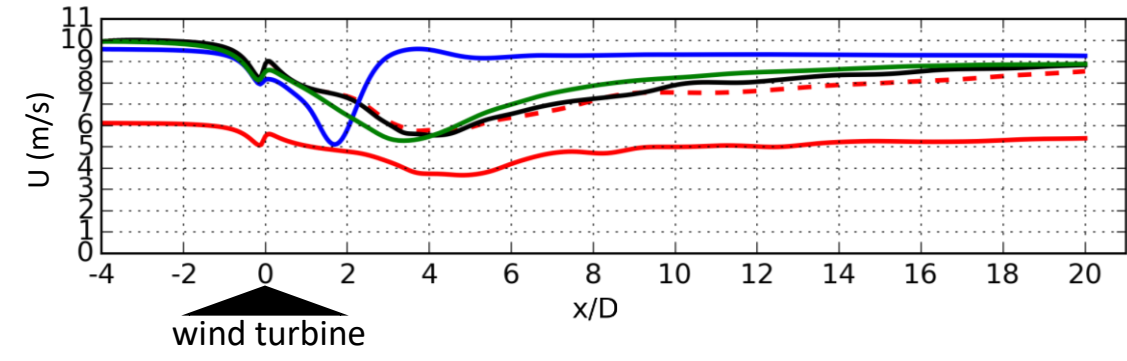
## Atmospheric simulation of a evening boundary layer (EBL):



## Atmospheric simulation of a stable boundary layer (SBL):



## Streamwise velocity in the **wake**:



- Different turbulent structures
- Modifying the Mann generated atmosphere to approximate the EBL

