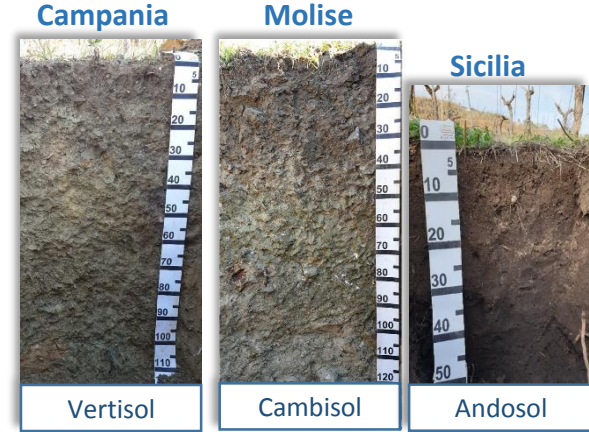
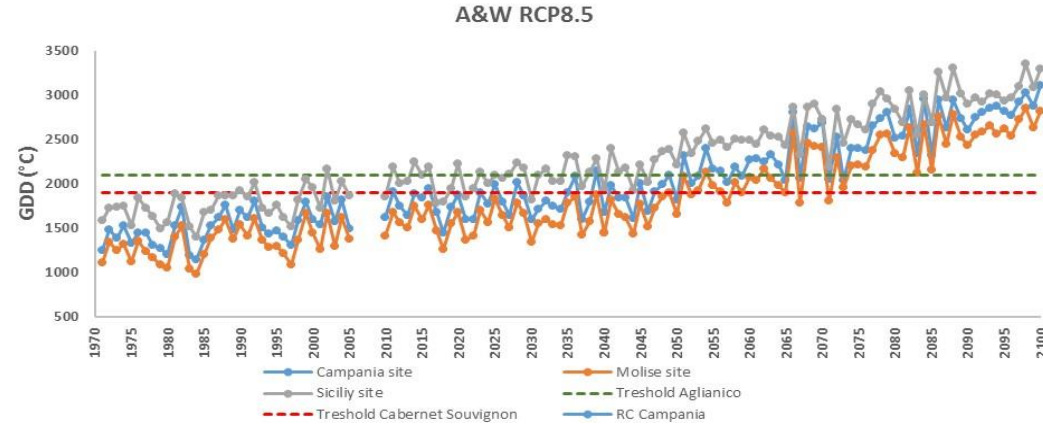


STUDY AREAS

- Campania
- Molise
- Sicily



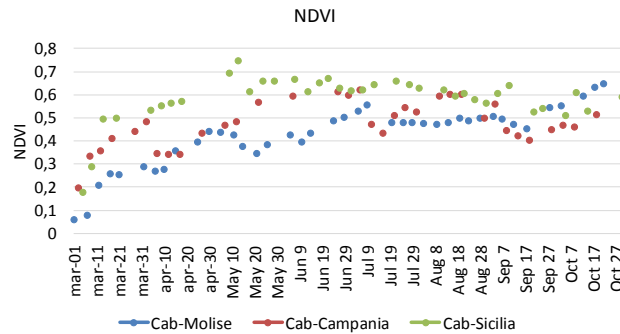
Different pedo climatic conditions



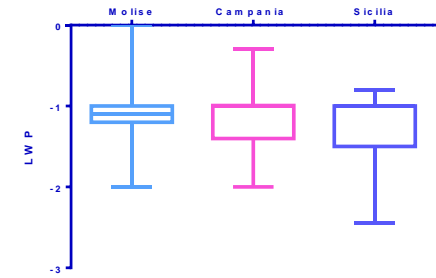
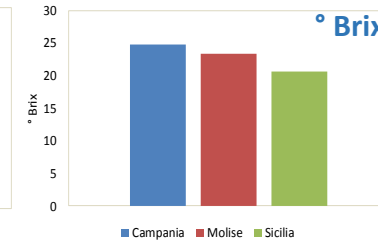
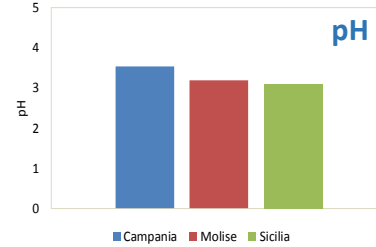
SPA MONITORING 2020

Soil-Plant-Atmosphere system (SPA) has been monitored in cabernet sauvignon vineyard in each study area:

- **Soil** (water content, temperature and Eca);
- **Plant** (e.g. LAI, LCC; Leaf water potential - LWP, grapes quality; Remote Sensing -satellite and UAV MS images)
- **Weather** ( temperature, rainfall, solar radiation, wind)

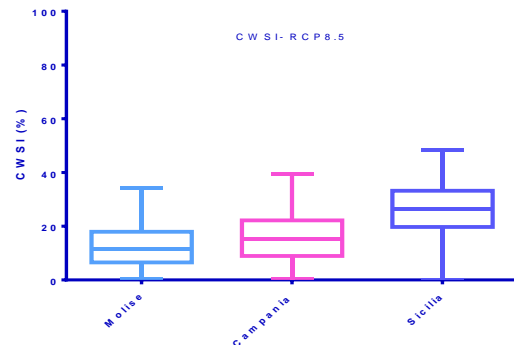
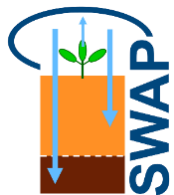


Correlation between water stress and plant responses

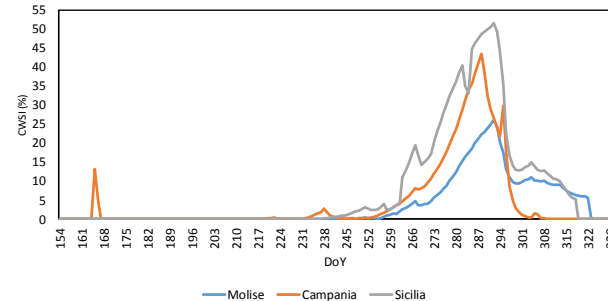


SPA SIMULATION MODEL APPLICATION

Assessment of soil potentiality to produce water stress under the same boundaries conditions and plant development



Evaluation of water stress produced (CWSI) under real field conditions in 2020



Simulation model application confirms the different potentiality of soil in terms of expected water stress and between the selected sites. This will allow to study the effect of different pedoclimatic condition to cabernet sauvignon genotype adaptation to future climate changes.