

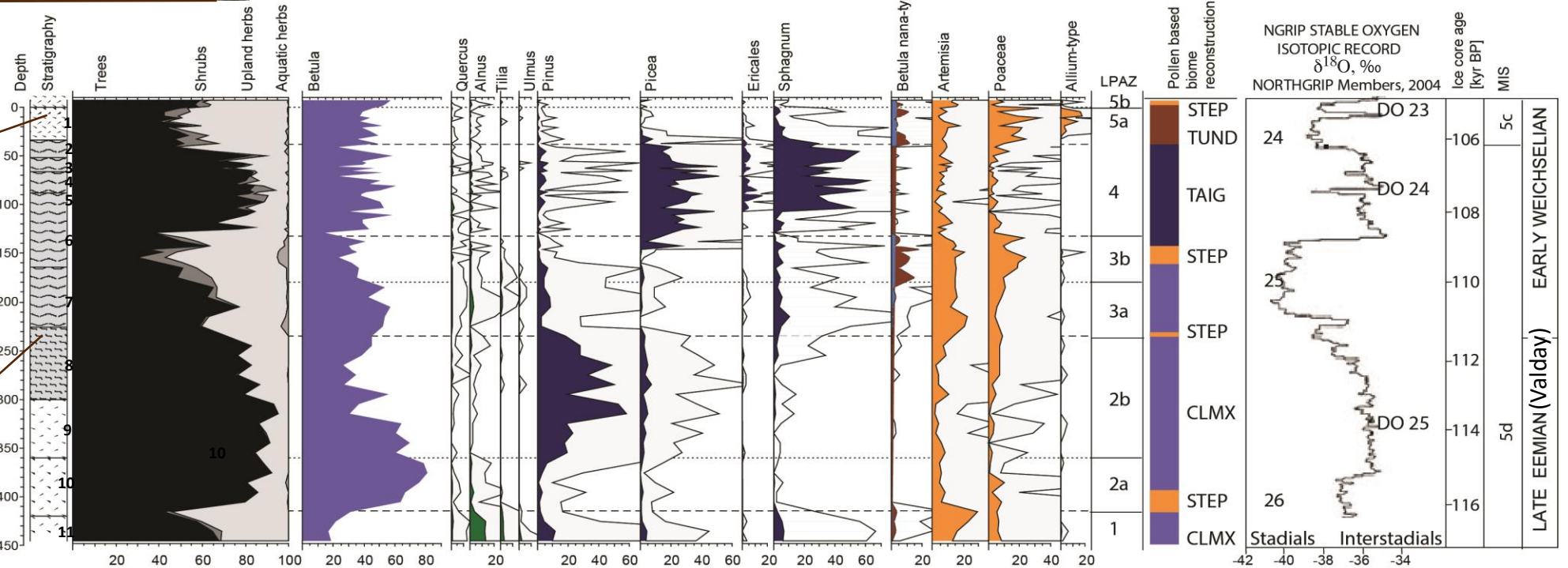
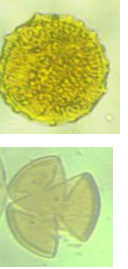
# Preliminary results of a multidisciplinary study of the buried peatland and host sediments of the Moscow-Valdai age (Dmitrov, Moscow region, Russia)

## Settings

The Dmitrov quarry is situated on the outskirts of Dmitrov, Moscow Region (Russia) 56°19'06.6 "N 37°33'16.2 "E., 173 m above sea level.

## Methods

- Soil description and analysis
- Macrofossil analysis
- Insect remains analysis
- Pollen analysis
- Pollen-based biome reconstruction



1- Weichselian cover loam, 2- gray medium loam, 3-7 – peat, 8 - dark gray light loam (gyttjia), 9 – gyttjia, 10 - alluvium sand, 11 - fluvioglacial alluvium.

Summarized pollen diagram (AP+NAP=100%) with local pollen zones and pollen-based biome reconstruction. Biomes: TUND-tundra, TAIG-Taiga, CLMX-cool mixed forest, SPEG-steppe.

Correlation with regional climatostratigraphic divisions