

Gradient-boosted equivalent sources

Santiago R. Soler &

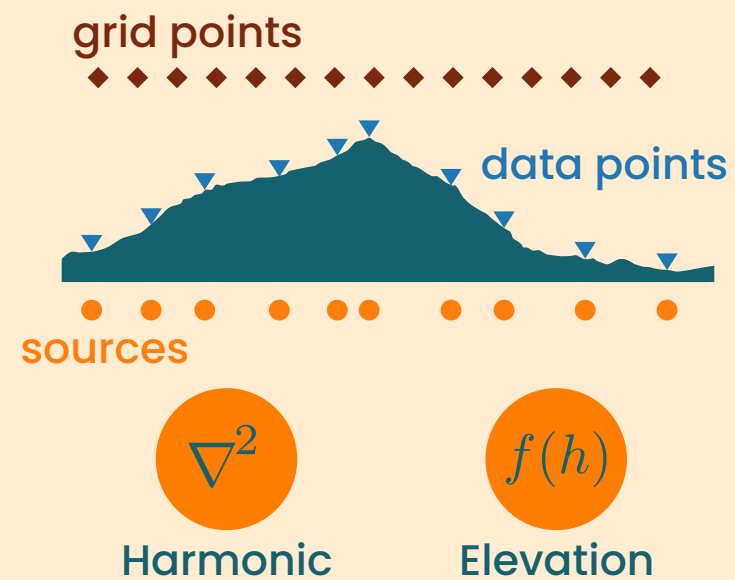
Leonardo Uieda

santiago.r.soler@gmail.com



for gridding large gravity and magnetic datasets

Equivalent Sources

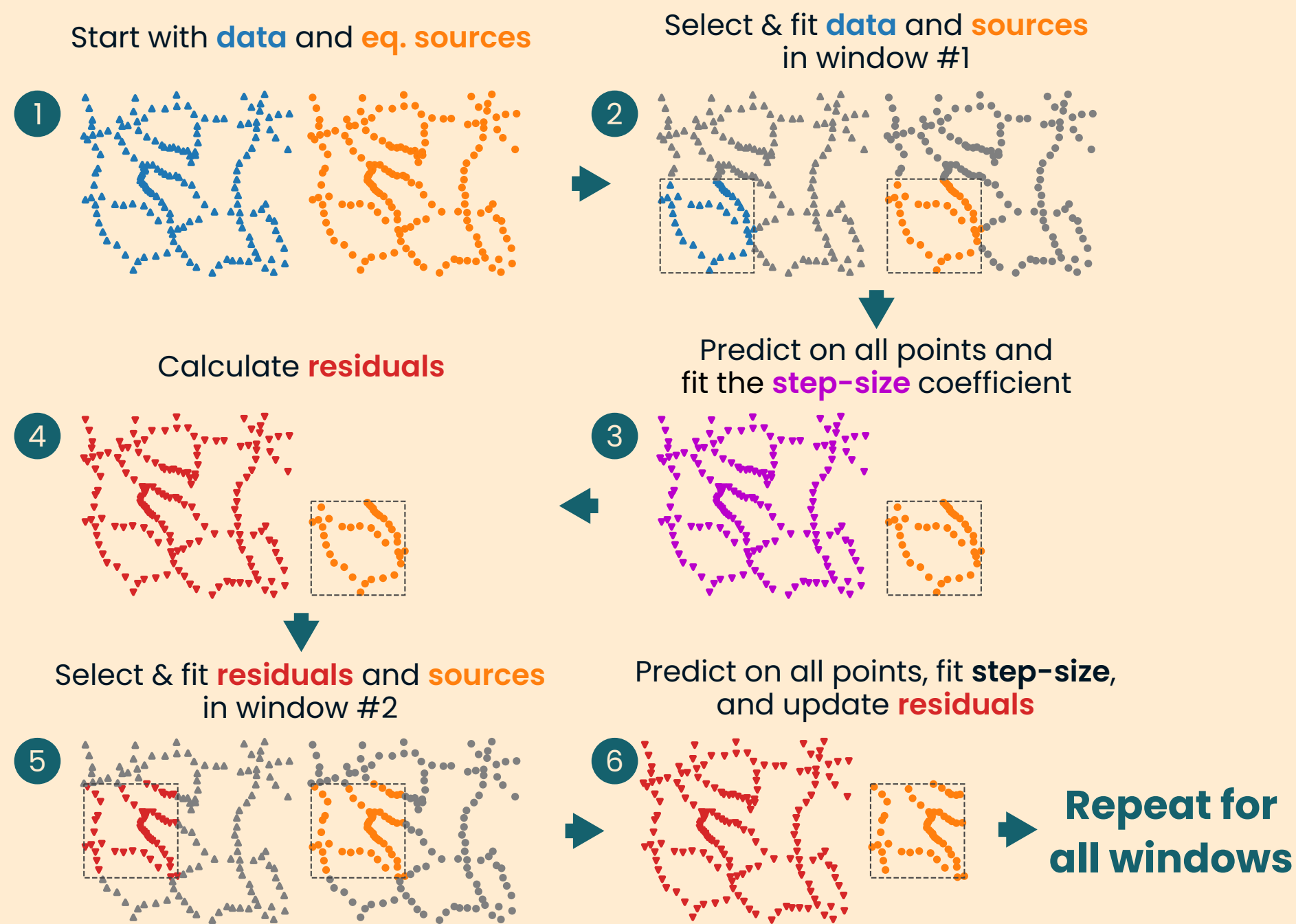


The Problem

200 000 data
X 200 000 sources
300GB RAM

The text indicates a memory problem: 200,000 data points multiplied by 200,000 sources results in 300GB of RAM usage. An icon of a RAM module with flames above it symbolizes the memory issue.

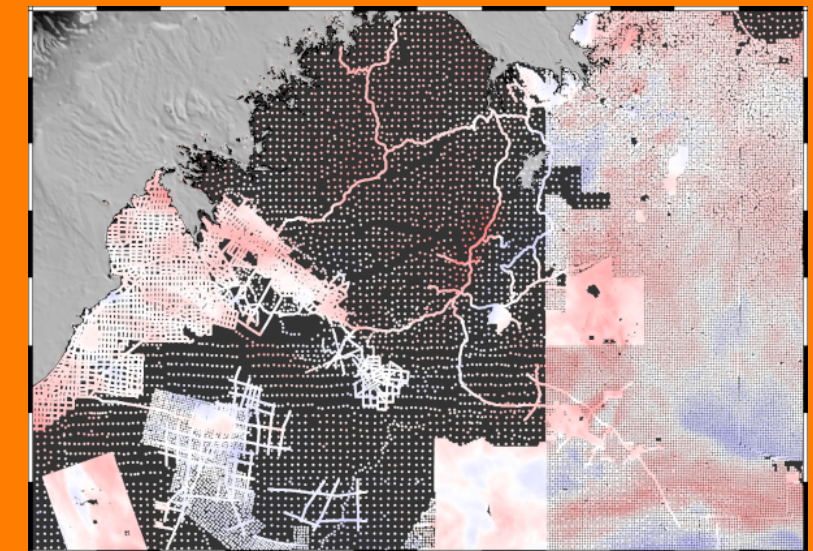
The Solution: Gradient boosting



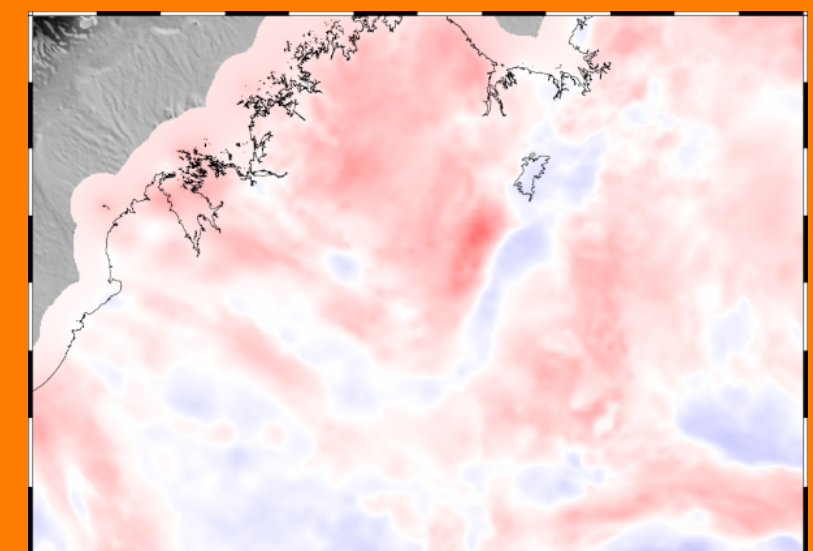
Interpolating Australia Gravity Data

+1.7 million data points
<10GB RAM

Section of the original data

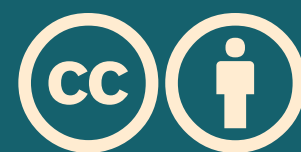


Section of the Interpolated grid



Read the preprint:

doi: 10.31223/X58G7C



Feel free to take screenshots

