

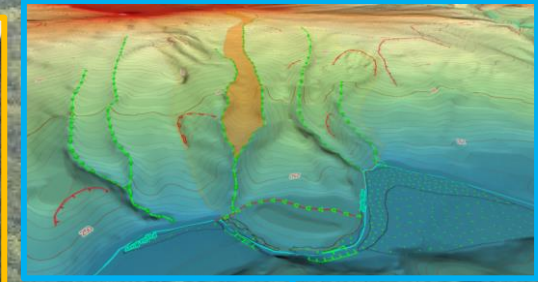
From landslide characterization to nature reserve management: The Scialimata Grande landslide Geosite (Central Appennine, Italy)

G. TRONTI¹, I. M. BOLLATI¹, M. PELFINI¹, F. BELISARIO³, P. FREDI²

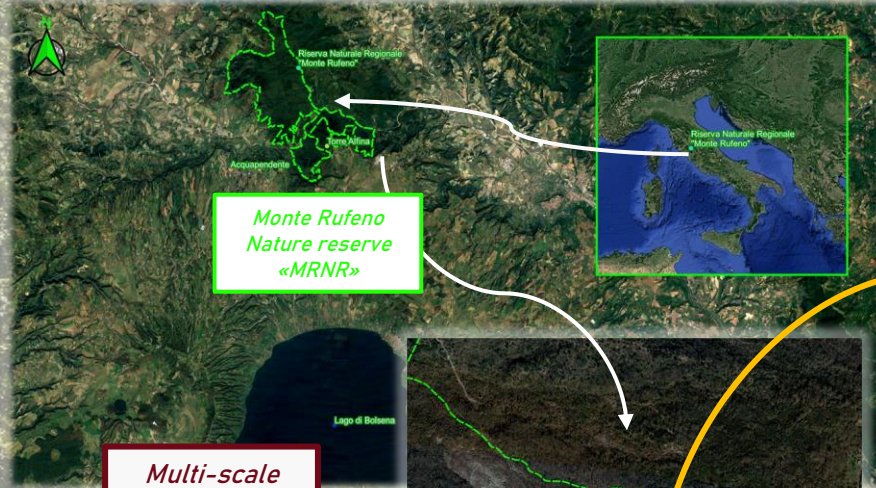


Scialimata Grande Geosite features and values:

- ❖ Geosite n° 396 of the Lazio regional list
- ❖ Complex landslide with rotational-earth flow behaviour on clays lithotypes
- ❖ Protected as Geoheritage example inside the MRNR
- ❖ High Scientific and educational values as *Moving Geosite* (Calcaterra et al., 2014) and *Active Geosite* (Pelfini & Bollati, 2014; Reynard, 2004) and for its *Ecological support role* (Panizza, 2001; Bollati et al., 2015)
- ❖ Risk scenarios for the geo-touristic trails

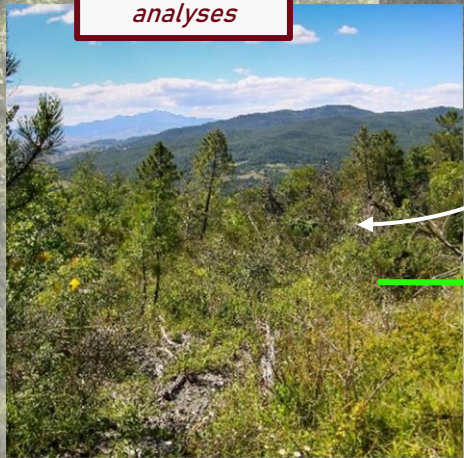


- Photointerpretation and DEM analysis
- UAV remote sensing
- Geomorphological surveys
- GPS monitoring



Monte Rufeno
Nature reserve
«MRNR»

Multi-scale
and multi-
disciplinary
analyses



Ecological analyses

Dendrogeomorphology anomalies preliminary mapping - inclination and slanting of the tree trunks and roots exposure

Geomorphological analyses

