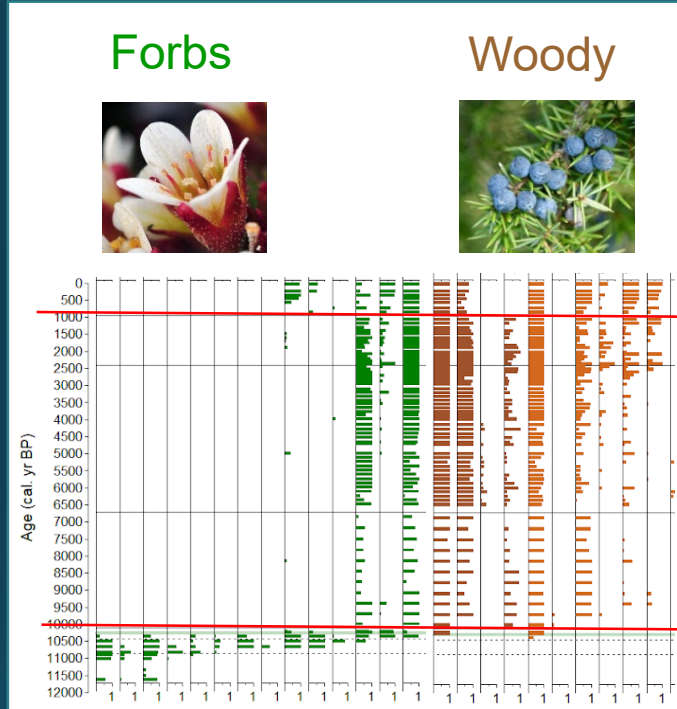


Ancient sedimentary DNA shows rapid post-glacial colonization of Iceland followed by relatively stable vegetation until Landnám



Alsos et al. 2015. AoB Plant, Alsos et al. 2016 Biol Lett.

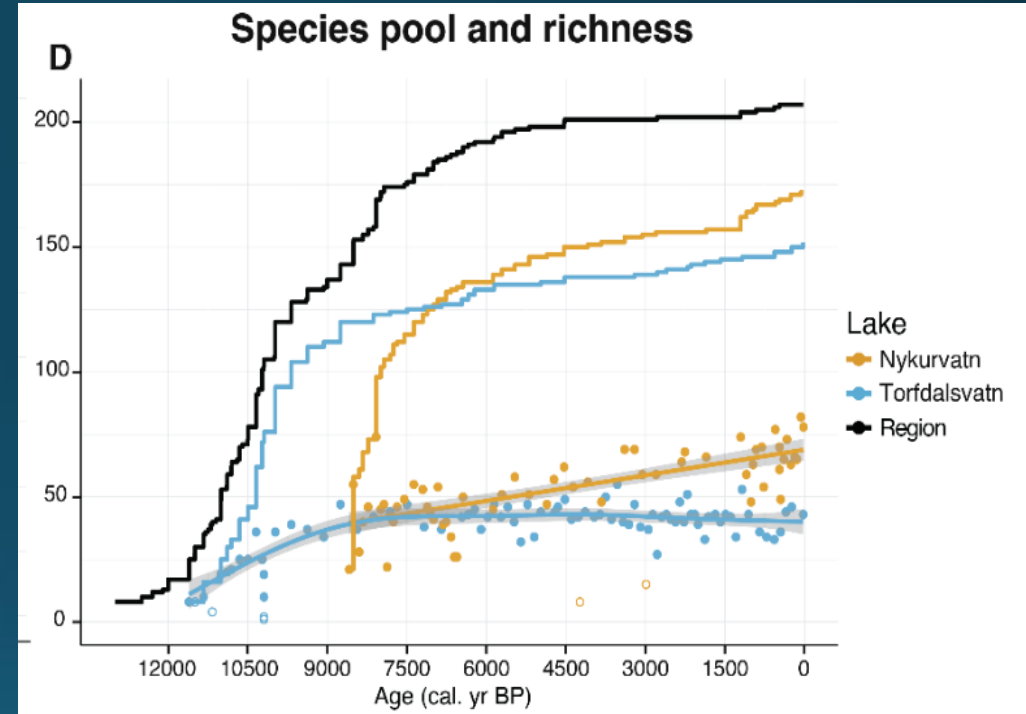
Iceland was mainly colonized from E-SE, but when?



Landnám
1000 cal BP

Warming
10,100

- Two major changes in the vegetation



- Massive Early Holocene colonization
- Sea ice important seed dispersal vector?

INGER GREVE ALSOS, inger.g.alsos@uit.no

Youri Lammers, Sofia E Kjellman, Marie K. F. Merkel, Emma M Bender, Alexandra Rouillard, Egill Erlendsson, Esther Ruth Guðmundsdóttir, Ívar Örn Benediktsson, Wesley R Farnsworth, Skafti Brynjólfsson, Guðrún Gísladóttir, Sigrún Dögg Eddudóttir, and Anders Schomacker 2021. Quaternary Science Reviews 259 <https://doi.org/10.1016/j.quascirev.2021.106903>