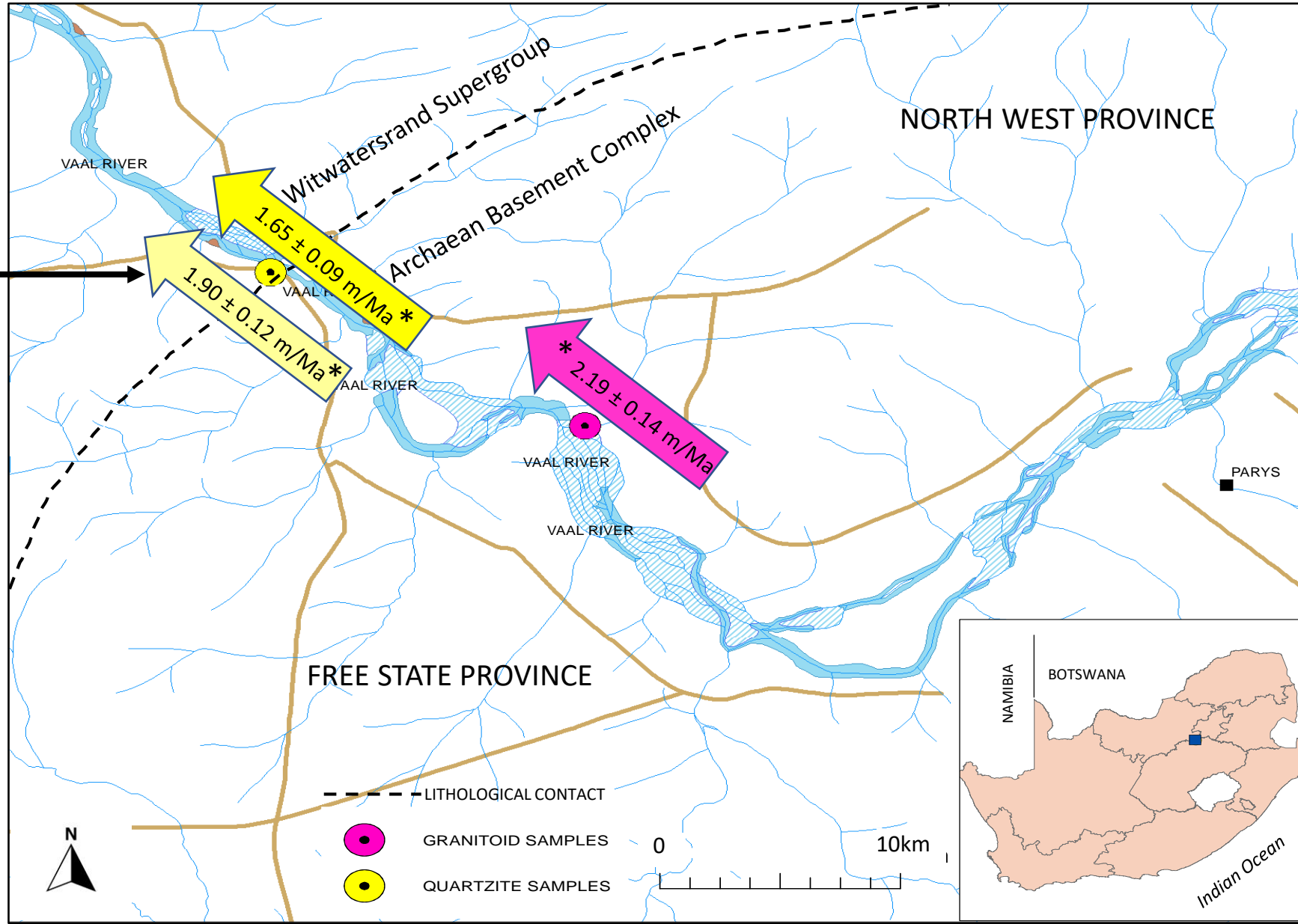


# Quantifying the erosion of the world's largest impact crater using cosmogenic nuclides: the Vredefort Dome, Parys, South Africa (Khosa *et al.* 2021)

Average denudation rates from samples (n=4) on now elevated part of channel perpendicular to current river channel



\* Results reported for  $^{10}\text{Be}$ . Results from analysis of both isotopes are in close agreement.

