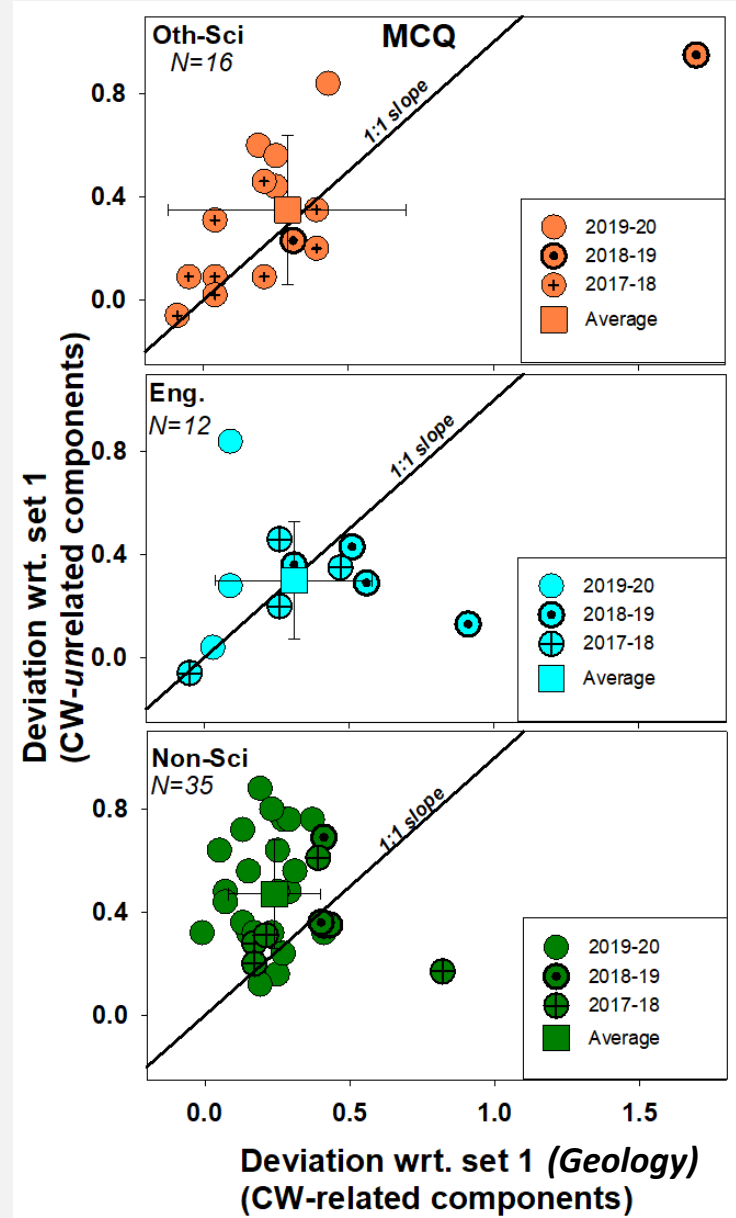
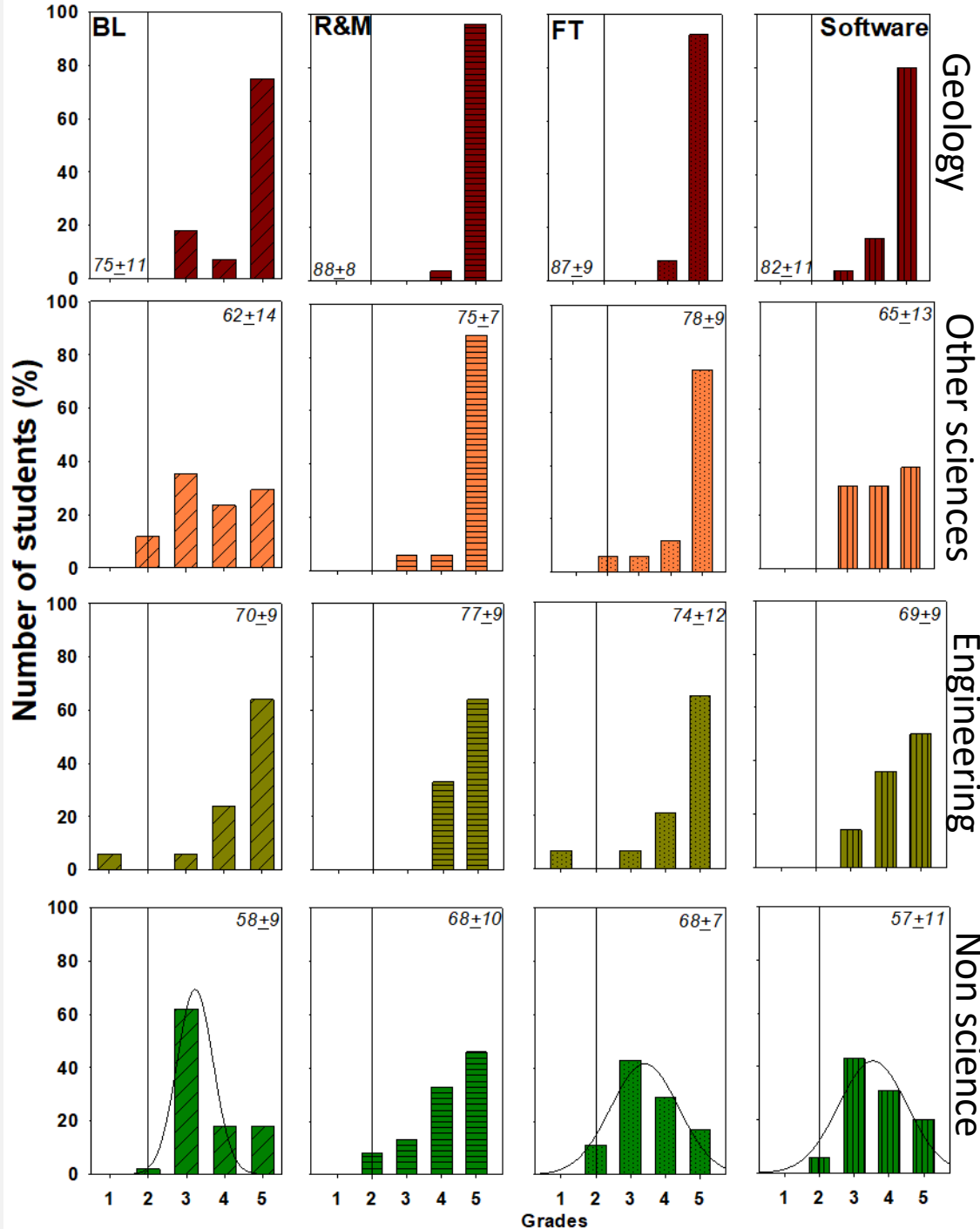


The importance of implementing diverse assessment methods in geosciences to promote inclusion.

Sudeshna Basu (Chemical Engineering/Earth Sciences)



- Coursework (40%):**
- BL [Visit to British Library] (6%)
Group observation and recording; Individual report
 - R&M [Hand specimen study of rocks and minerals] (12%)
Individual work
 - FT [Field trip] (12%)
Group submission on observation and interpretation; Individual submission on reflective question
 - Software (10%)
Multiple choice questions - MCQ
- Sit-in exam (60%):**

Many students, especially those from the non-science background performed better in components already covered in the course works.