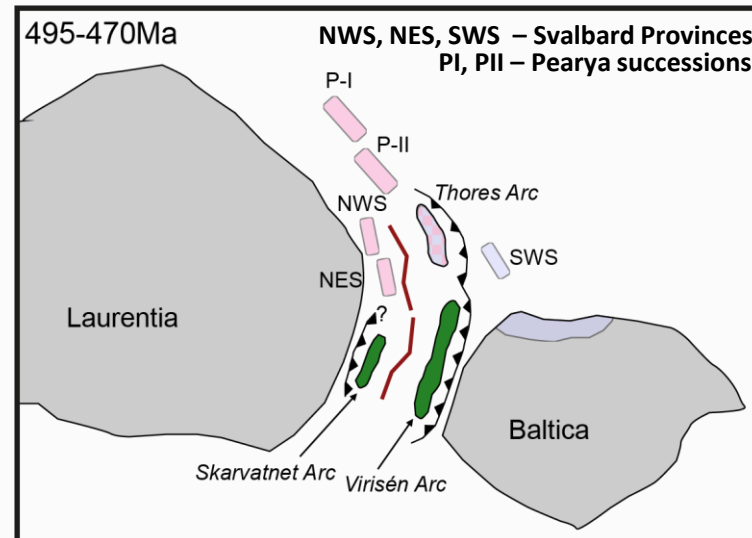
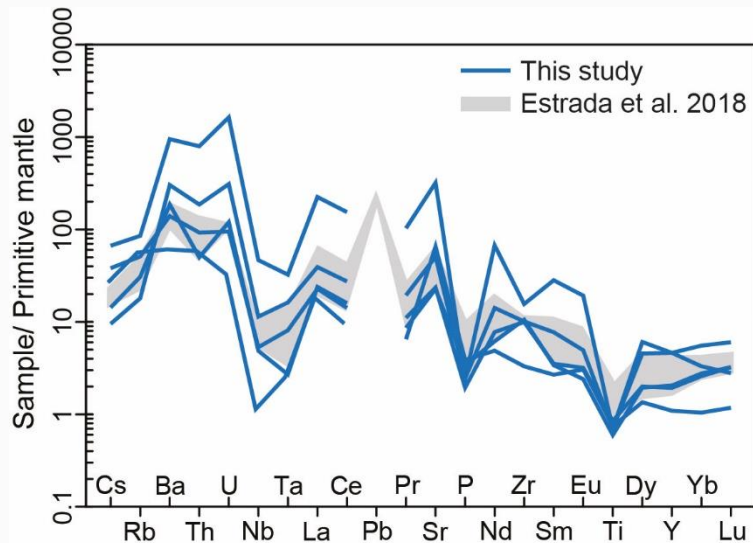
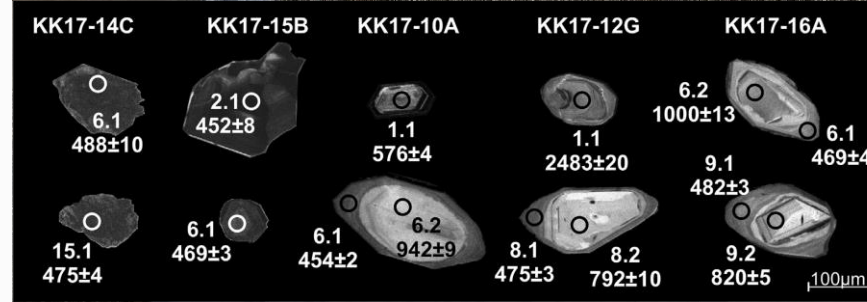
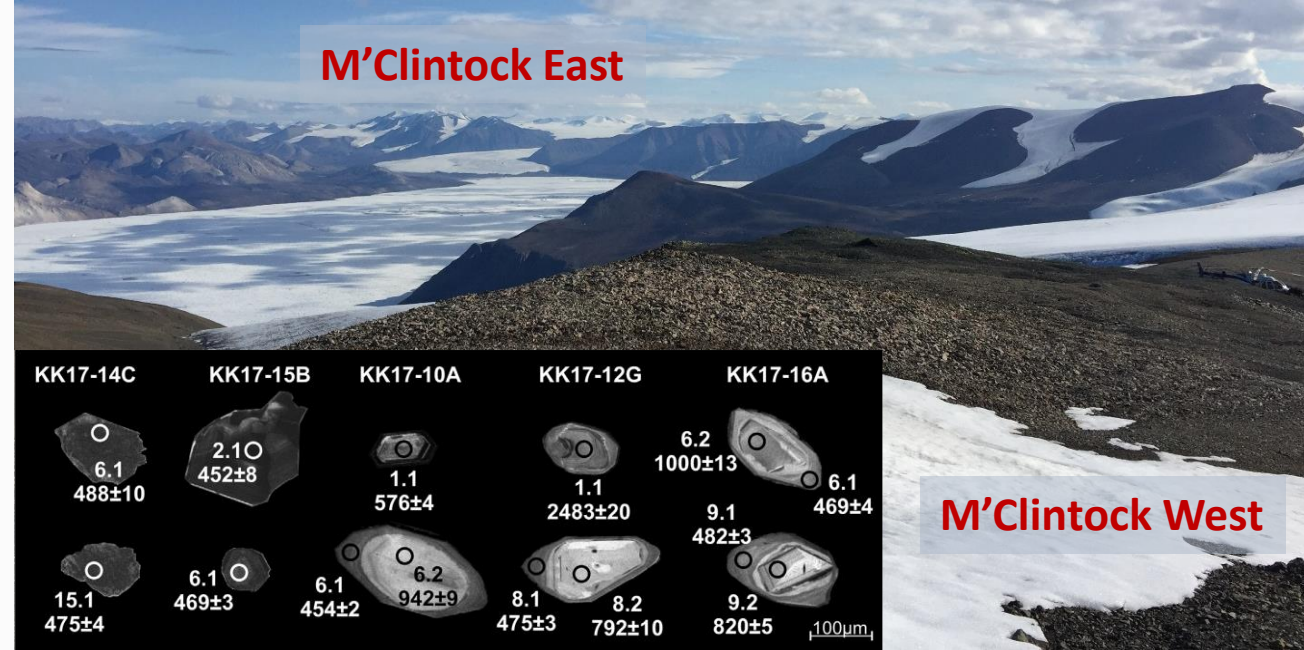
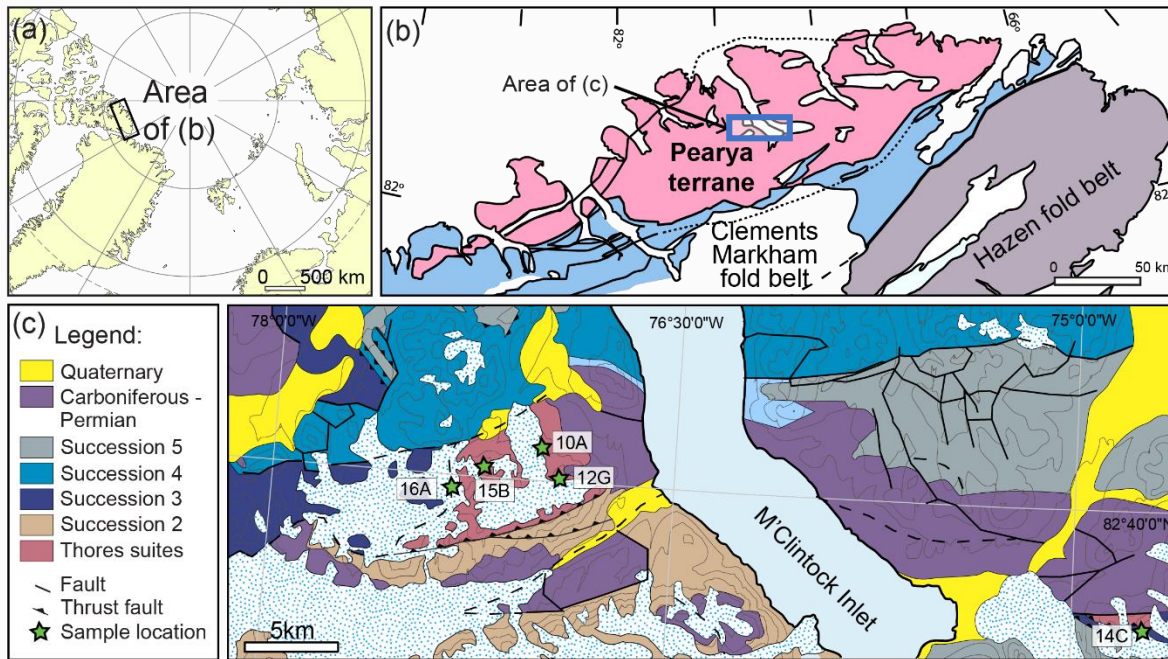


The Thores volcanic island arc of the Pearya Terrane from Ellesmere Island formed on Precambrian continental crust

Jarosław Majka, Karolina Kościńska, Jakub Bazarnik & William C. McClelland



- Thores suite formed at c. 488-469 Ma
- Zircon reveal c. 580-570 Ma inheritance typical for the Timanide Orogen
- The Thores Arc is coeval to other arc systems in northern lapetus
- Its current location is an effect of the late Caledonian escape tectonics
- **We propose to abandon the term "M'Clintock orogeny"**



More details in Majka et al. 2021 (Lithos) <https://doi.org/10.1016/j.lithos.2021.105999>