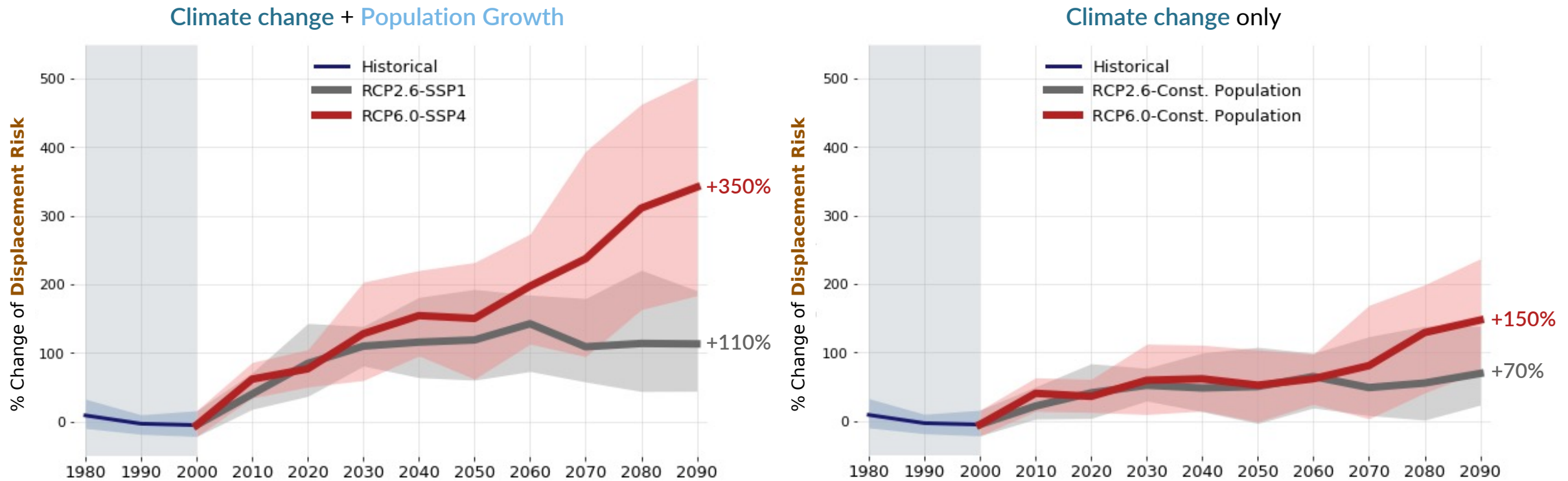


1°C of Global Warming causes a ~50% Increase in Population Displacement Risk by River Floods

Pui Man Kam, Gabriela Aznar-Siguan, Jacob Schewe, Leonardo Milano, Justin Ginnett, Sven Willner, Jamie W. McCaughey, and David N. Bresch
Weather and Climate Risks Group, ETH Zürich

www.wcr.ethz.ch
mannie.kam@usys.ethz.ch

A modelling study of change river flood **displacement risk** by both **climate change** and **population growth** using CLIMADA.



- Consider **climate change only**, rate of risk increase approx. **+50% per °C** warming (Fig. 2 in *the paper*).
- Results are **geographically dependent**. (i.e. Amount of risk increase differs by region)
- E.g. Risk increase in Asia-Pacific is more driven by climate change; Sub-Saharan Africa is more driven by population growth.

