

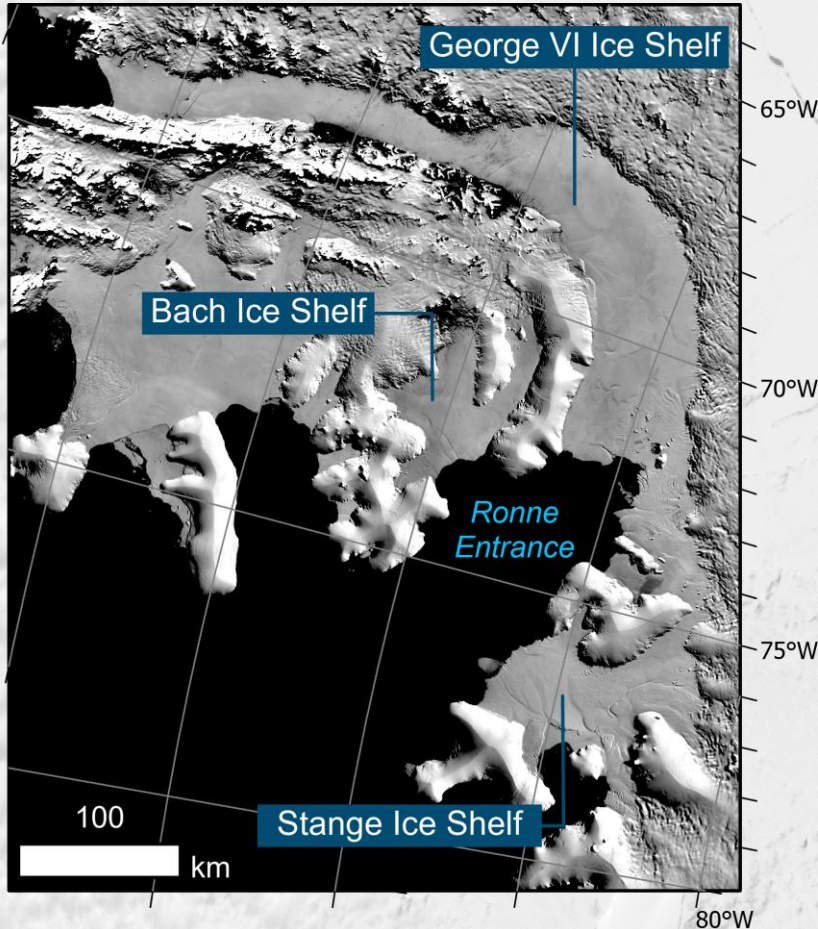
# Decadal changes in southwest Antarctic Peninsula Ice Shelves

Tom Holt\* & Neil Glasser

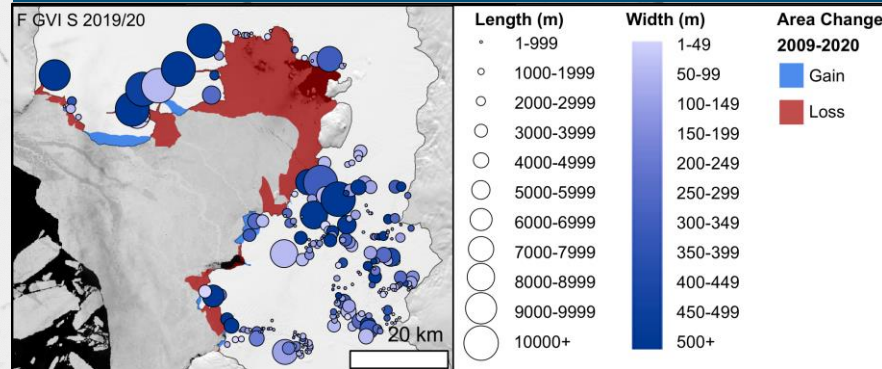
Corresponding author: [toh08@aber.ac.uk](mailto:toh08@aber.ac.uk), [@tom\\_holt](https://twitter.com/tom_holt)

Aim: To investigate the recent glaciological changes to Bach, Stange and George VI ice shelves located on the southwest Antarctic Peninsula.

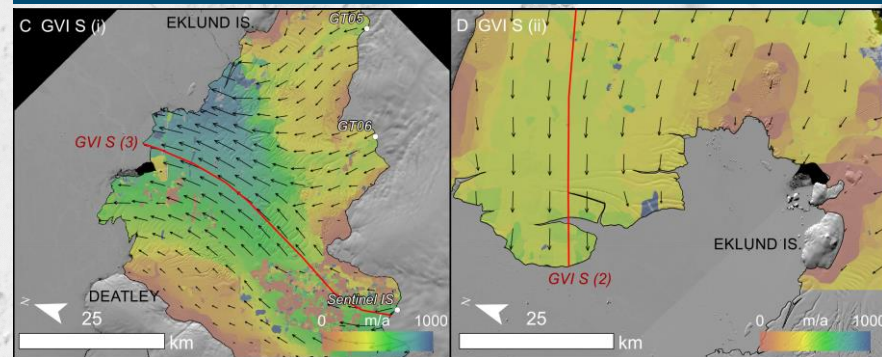
Used ASTER, Landsat ETM+/OLI and Sentinel 2A/B satellite imagery acquired between 2005 and 2019/20 to assess...



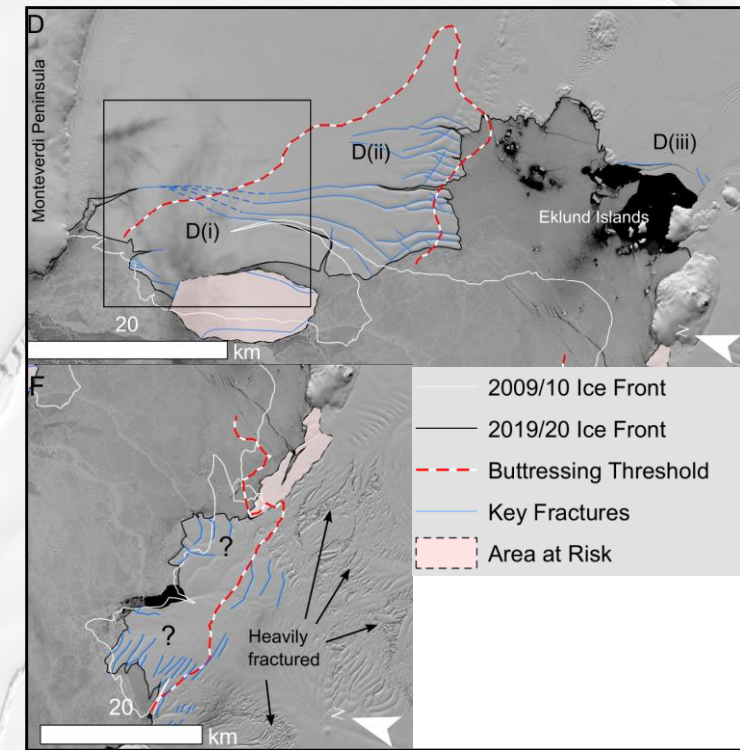
## Spatial and structural changes, e.g.:



## Surface flow speed (and changes), e.g.:



## Provide an assessment of future ice front stability, e.g.:



Summary of research available as a StoryMap: <https://tinyurl.com/HoltvEGU>