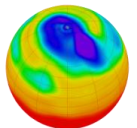


Sentinel-1 InSAR data by LiCSAR system

Milan Lazecky, Yasser Maghsoudi, C. Scott Watson, Yu Morishita, John Elliott, Andrew Hooper, Tim Wright, Fabien Albino, Daniel Juncu, and many others helped developing the system



**Centre for Environmental
Data Analysis**

SCIENCE AND TECHNOLOGY FACILITIES COUNCIL
NATURAL ENVIRONMENT RESEARCH COUNCIL



**Earthquakes
without
Frontiers**
NATURAL ENVIRONMENT RESEARCH COUNCIL
ECONOMIC & SOCIAL RESEARCH COUNCIL



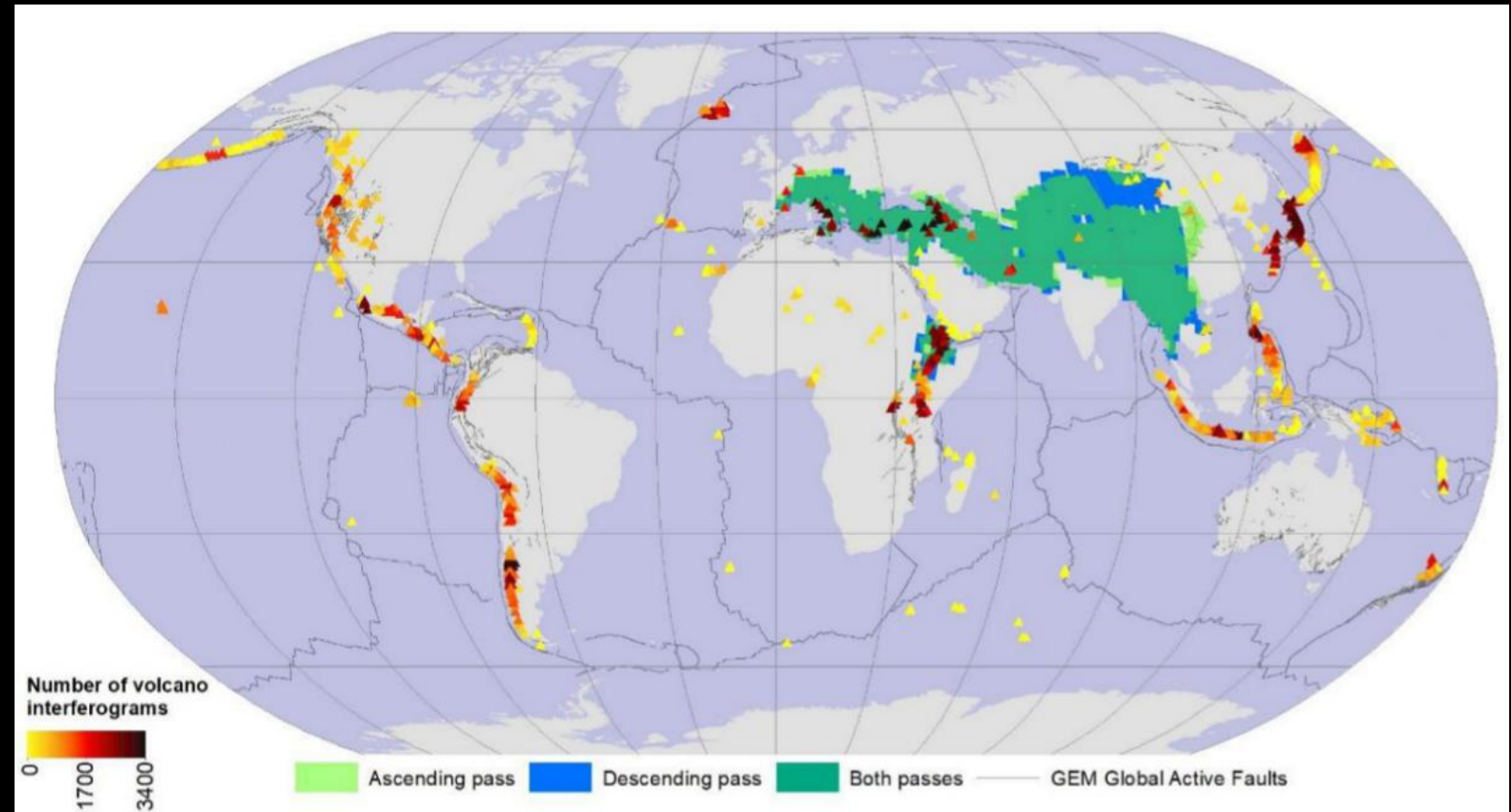
COMET



UNIVERSITY OF LEEDS

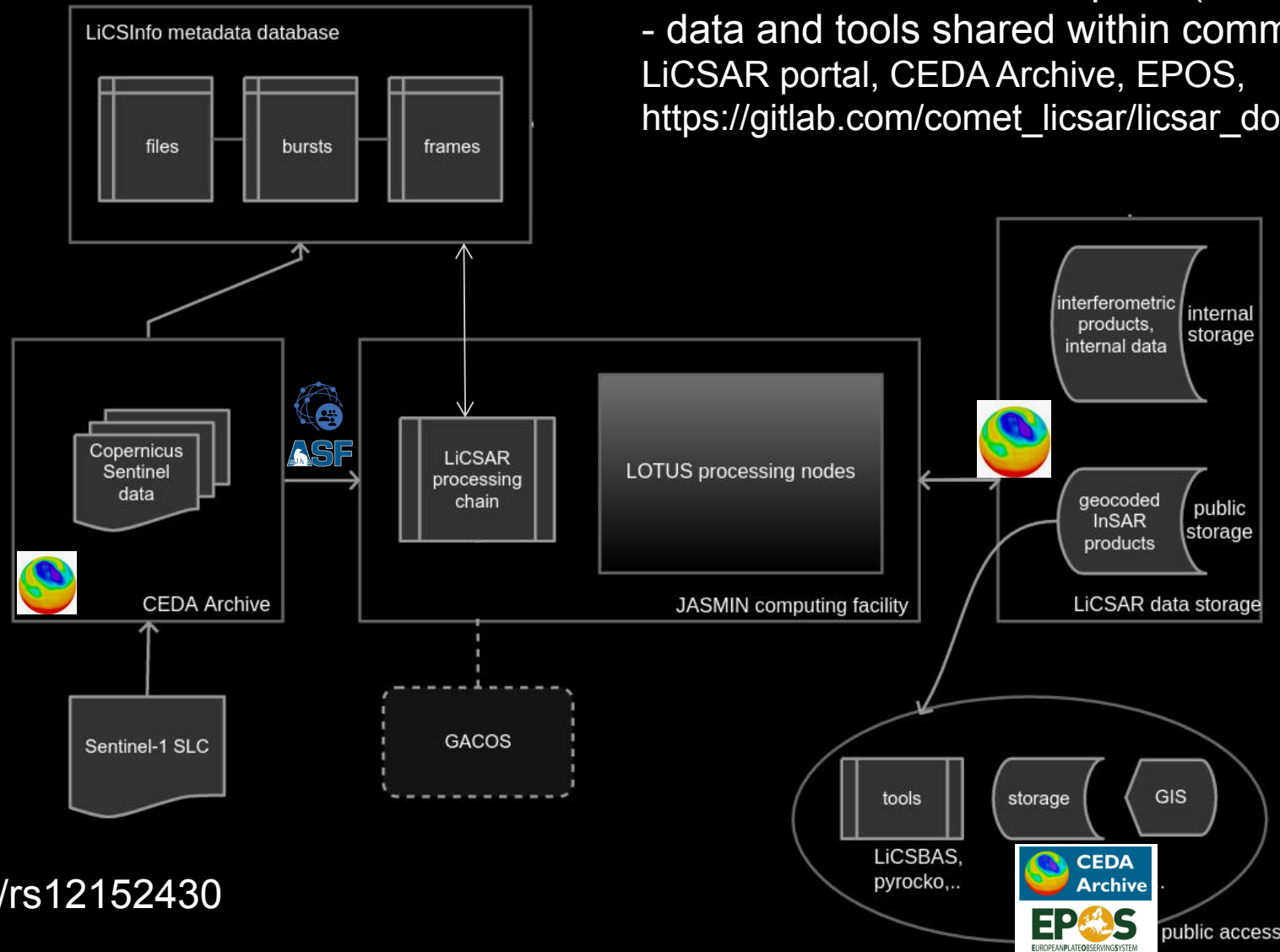
COMET LiCSAR

- LiCSAR system is generating interferograms from Sentinel-1 data
- covers tectonic and volcanic zones globally
- free and open InSAR data
- in total (Apr 2021) 455 000 ifgs



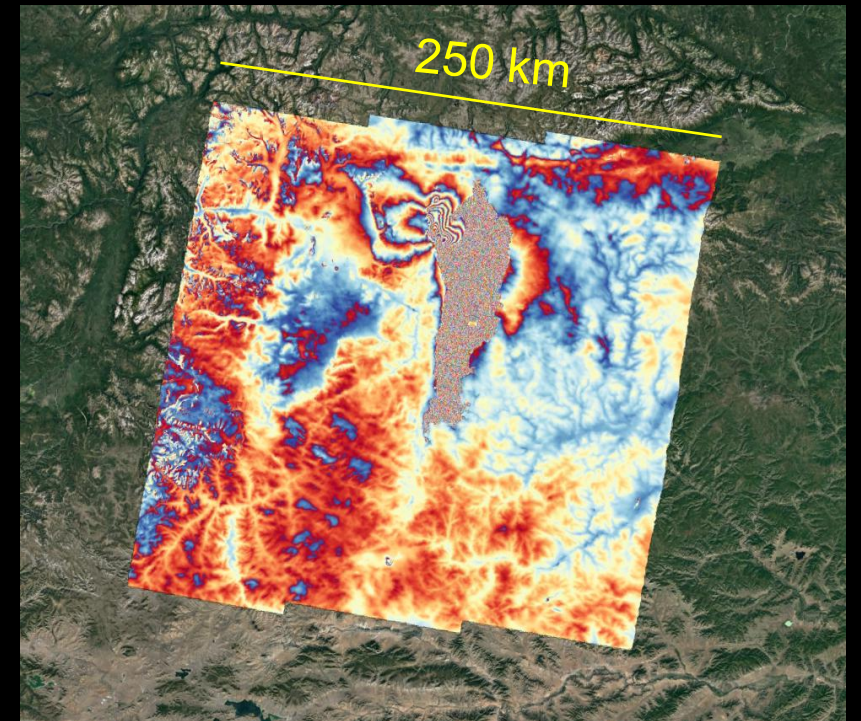
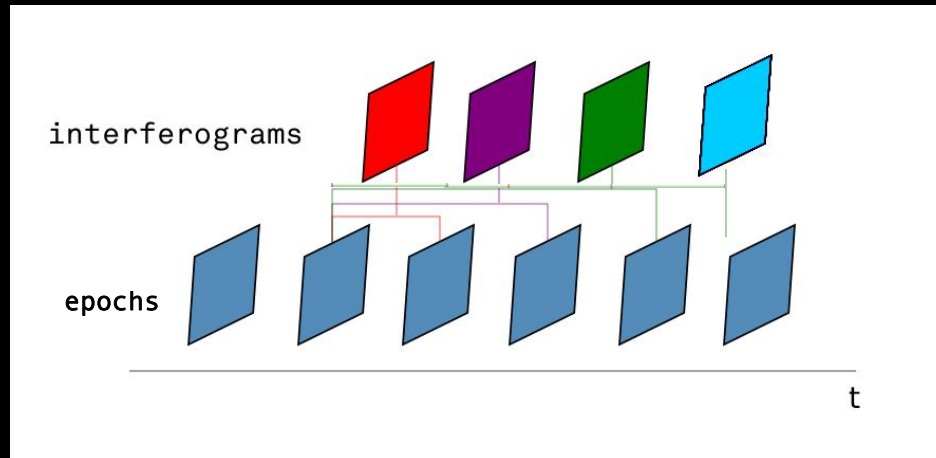
the system

- Sentinel-1 data from ASF, SciHub, CEDA Archive
- running on ~100 cores every moment (JASMIN >10k cores)
- allocated 350 TB data space (currently ~85 TB dataset)
- data and tools shared within community:
LiCSAR portal, CEDA Archive, EPOS,
https://gitlab.com/comet_licsar/licsar_documentation/wikis/licsar_tools



the data

- standard frame: $\sim 250 \times 250$ km
- 4+4 short-lag interferograms per epoch
- data shared as geotiffs of 0.001° resolution (approx. 110 m, WGS-1984)



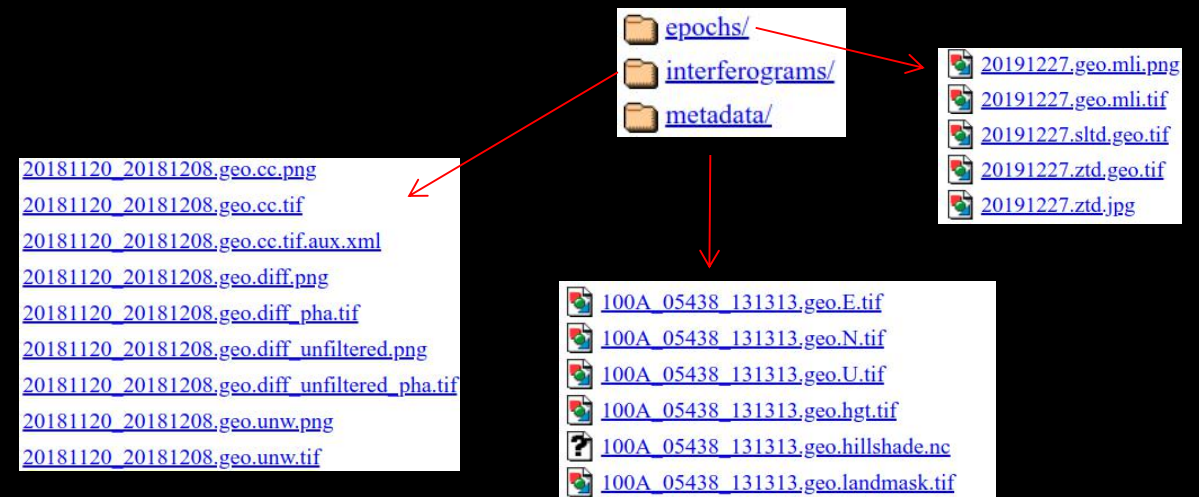
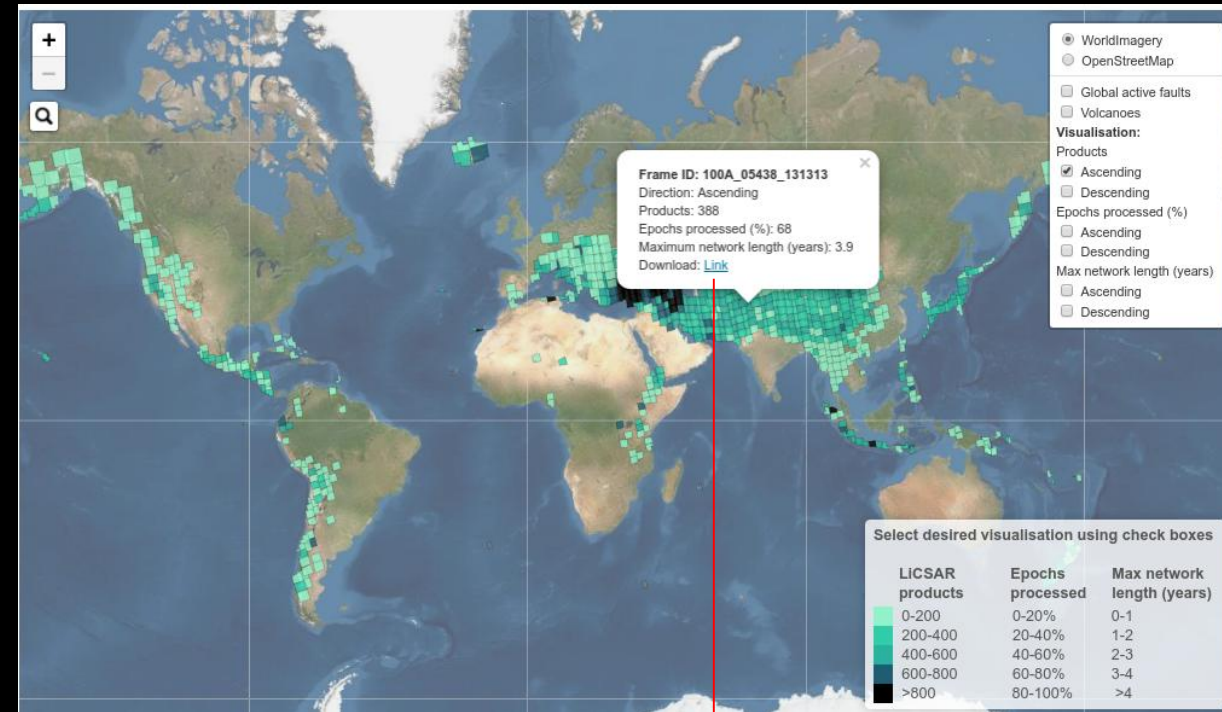
the data

core InSAR data

- filtered + unfiltered interferograms
- unwrapped interferograms
- interferometric coherence

additional data:

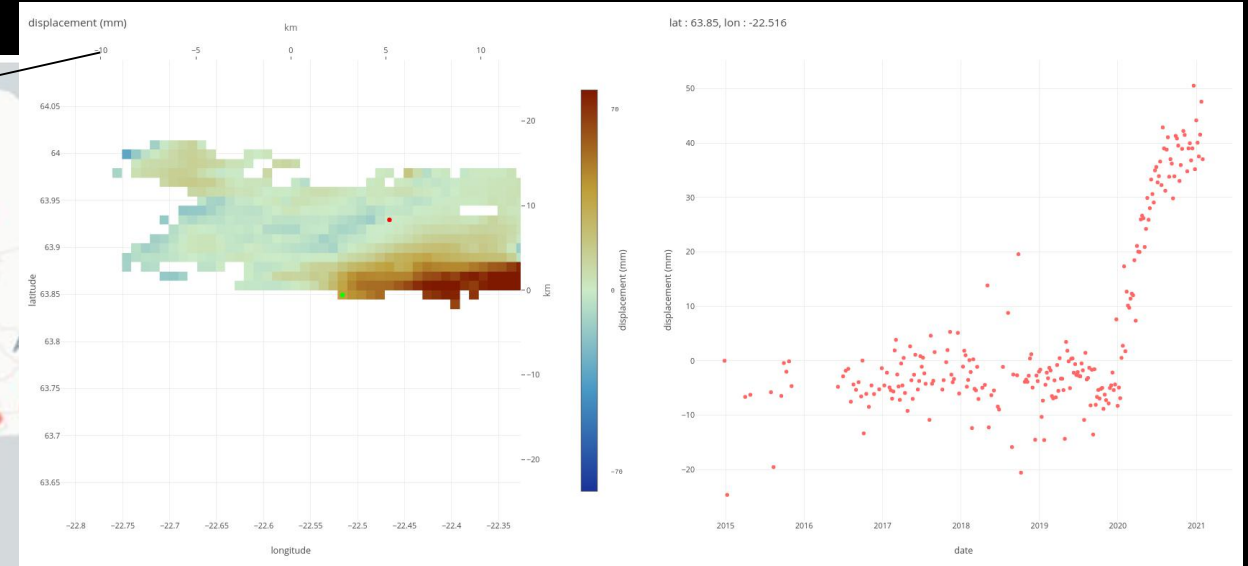
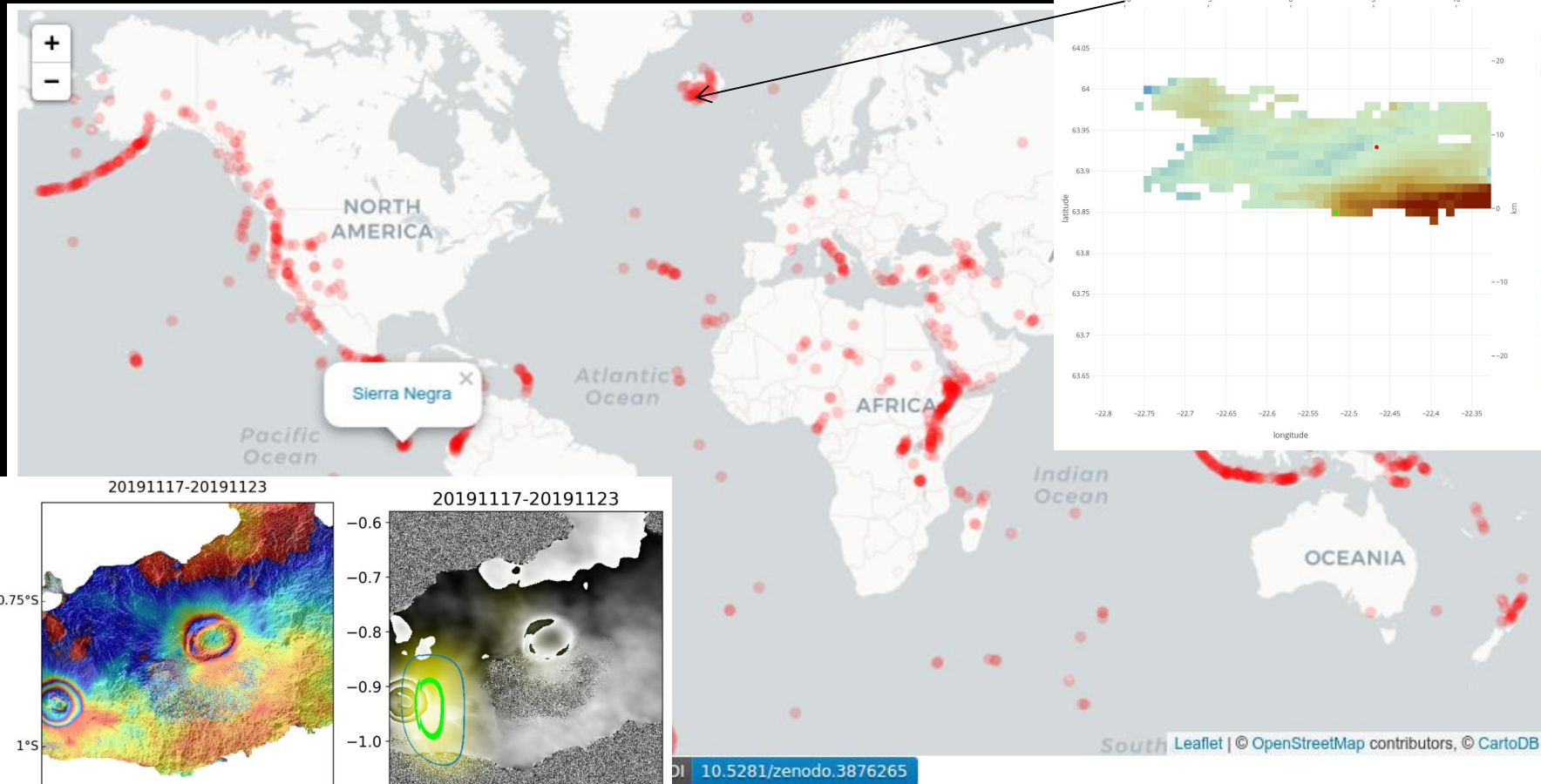
- backscatter intensity epoch files
- GACOS atmospheric correction
- DEM, landmask (GMT),...
- E-N-U vectors
- Google Earth kmz files for coseismic ifgs



related portals

Susi Ebmeier, Fabien Albino, C. Scott Watson, Richard Rigby,...

<https://comet.nerc.ac.uk/comet-volcano-portal>



time series analysis by
LiCSBAS (open source)
<https://github.com/yumorishita/LiCSBAS>

ML-based detection
of volcanic deformation

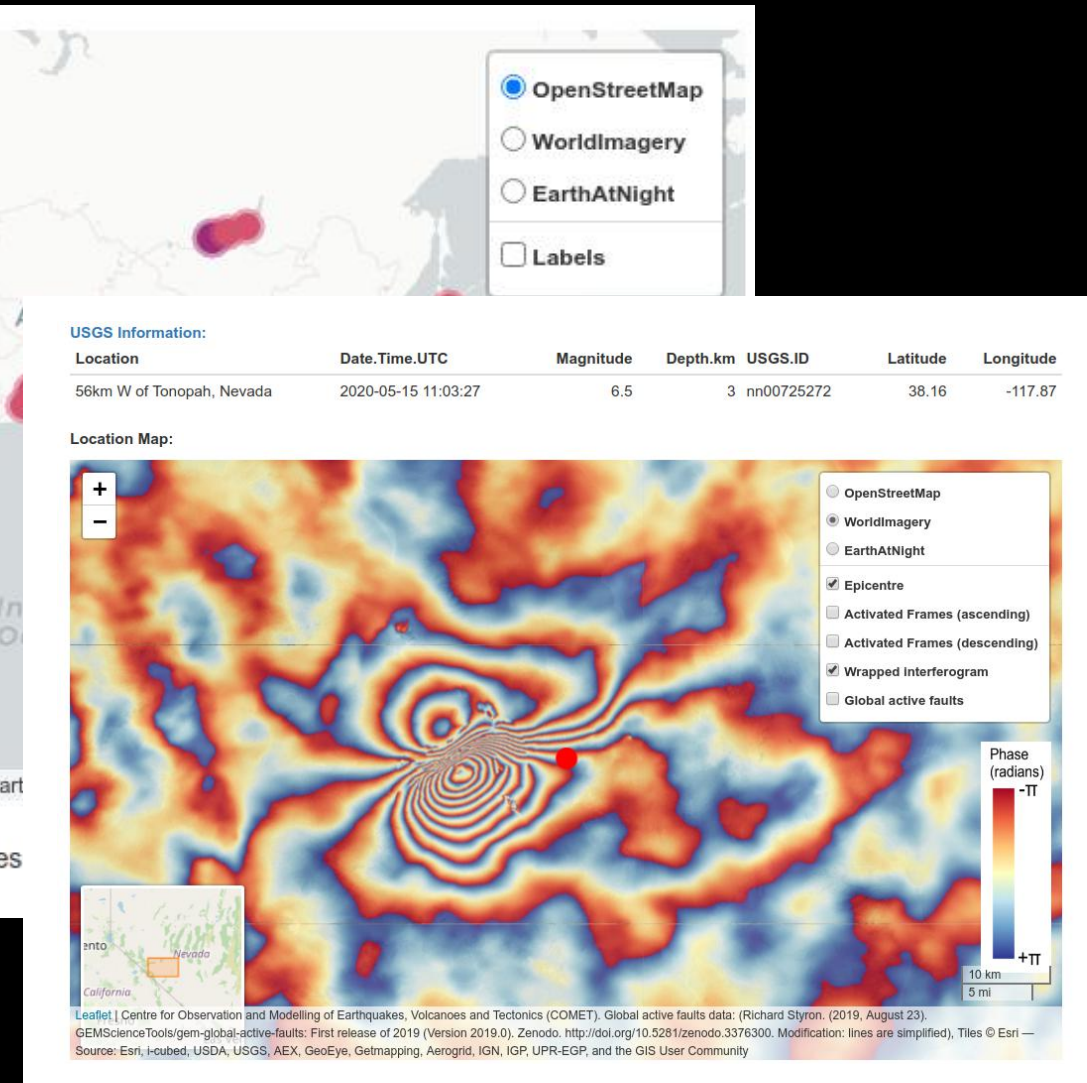
related portals

John Elliott, Milan Lazecky, C. Scott Watson, Yasser Maghsoudi,...

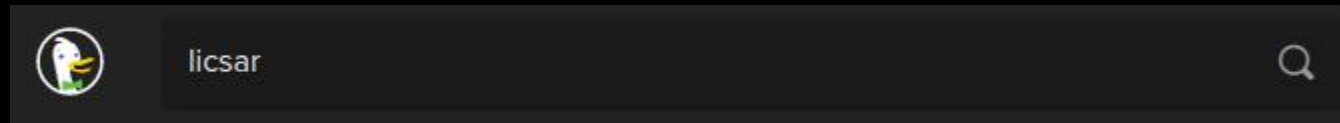
<https://comet.nerc.ac.uk/comet-lics-portal-earthquake-event/>



interferograms generated ~12 hours after post-earthquake acquisition (earthquakes > Mw5.5)



thank you for attention



1st link

COMET-LiCS-portal - Centre for the Observation and ...

<https://comet.nerc.ac.uk/COMET-LiCS-portal/>

Interferograms and coherence maps have been produced automatically using the **LICSAR** processor, which builds on the Gamma SAR and Interferometry software. Interferograms have been processed in overlapping "frames" defined within COMET-LICS. Products are represented on this map by shapes that match these frames.

