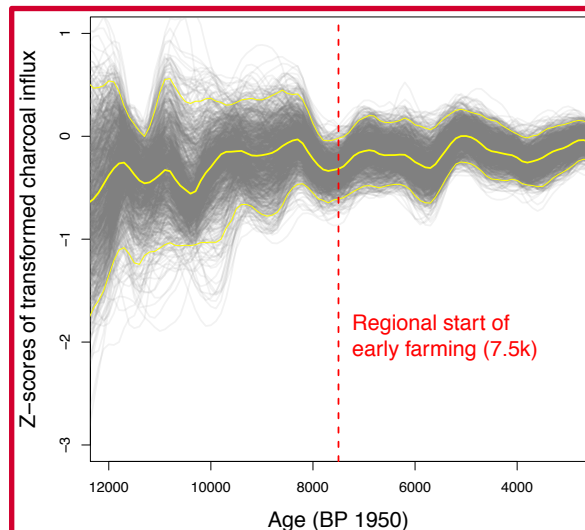


Anthropogenic land use change and fire history during the Holocene in the Iberian Peninsula

Luke Sweeney, Sandy P. Harrison and Marc Vander Linden



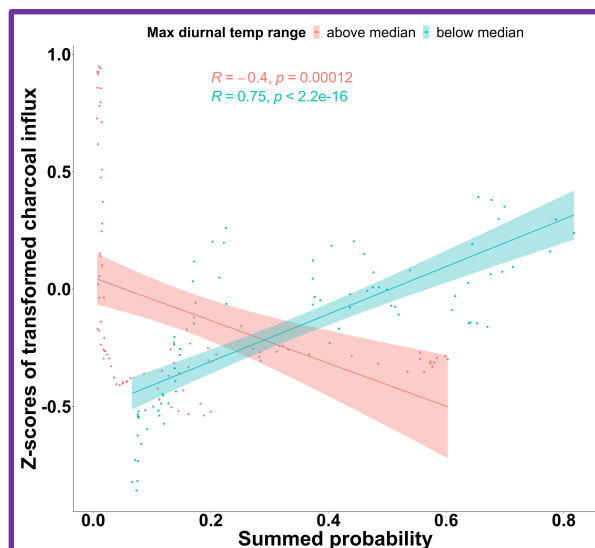
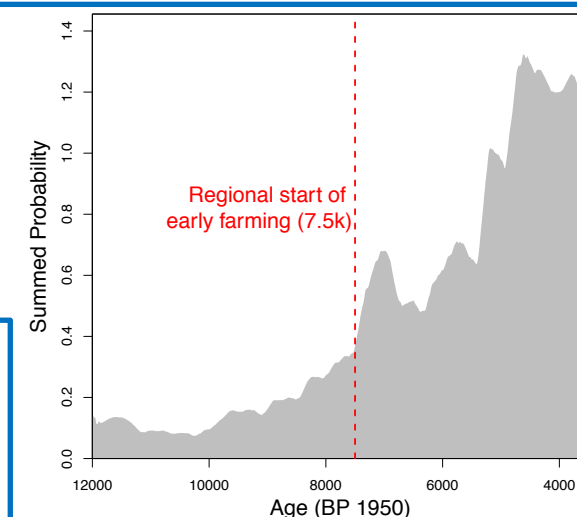
Fire history

- 53 sites;
- 500 yr smoothing window;
- 100 yr binwidth

Regional start of
early farming (7.5k)

Population change

- 6900 ^{14}C dates;
- 100 yr site binwidth;
- 200 yr smoothing window;

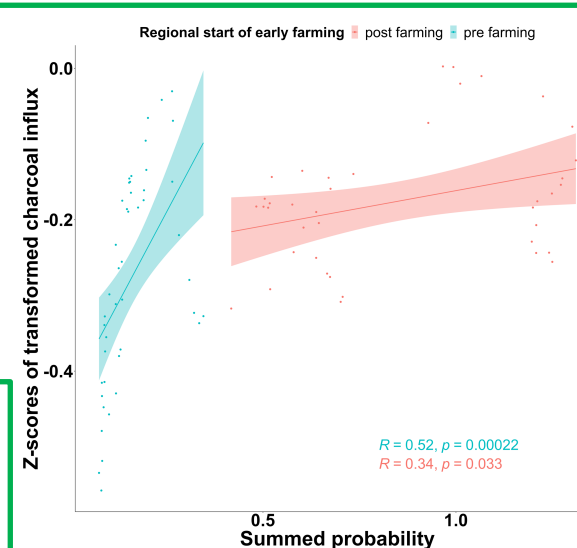


Example correlation

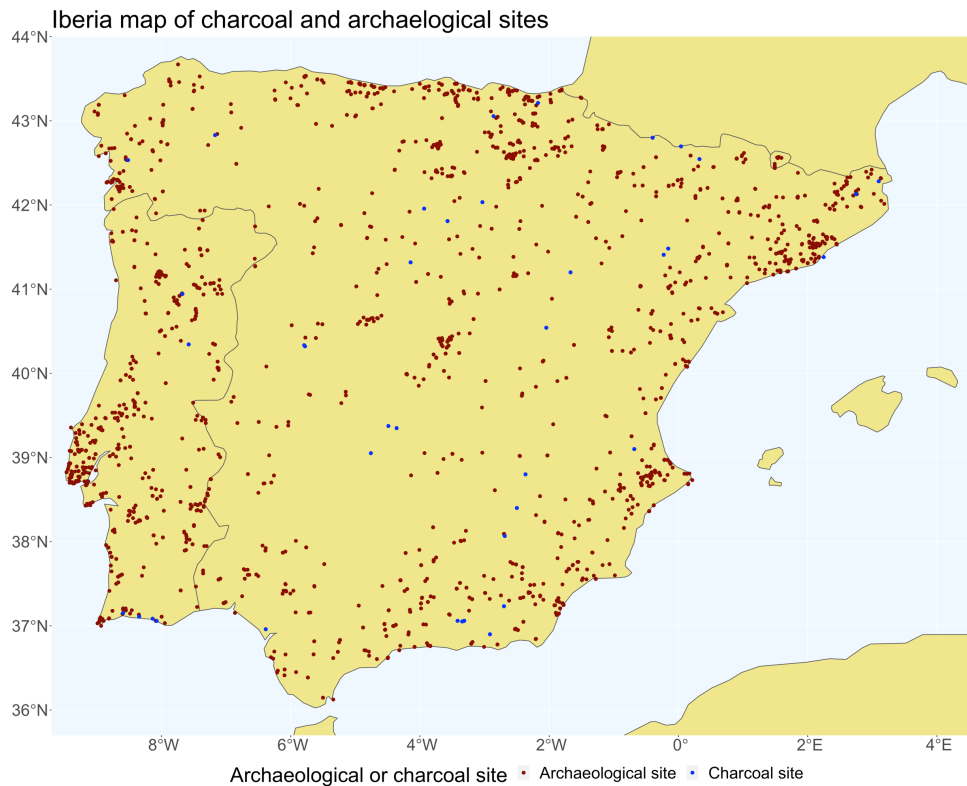
- above and below the median maximum diurnal temperature range for Iberia

Example correlation

- pre and post 7.5k start of farming

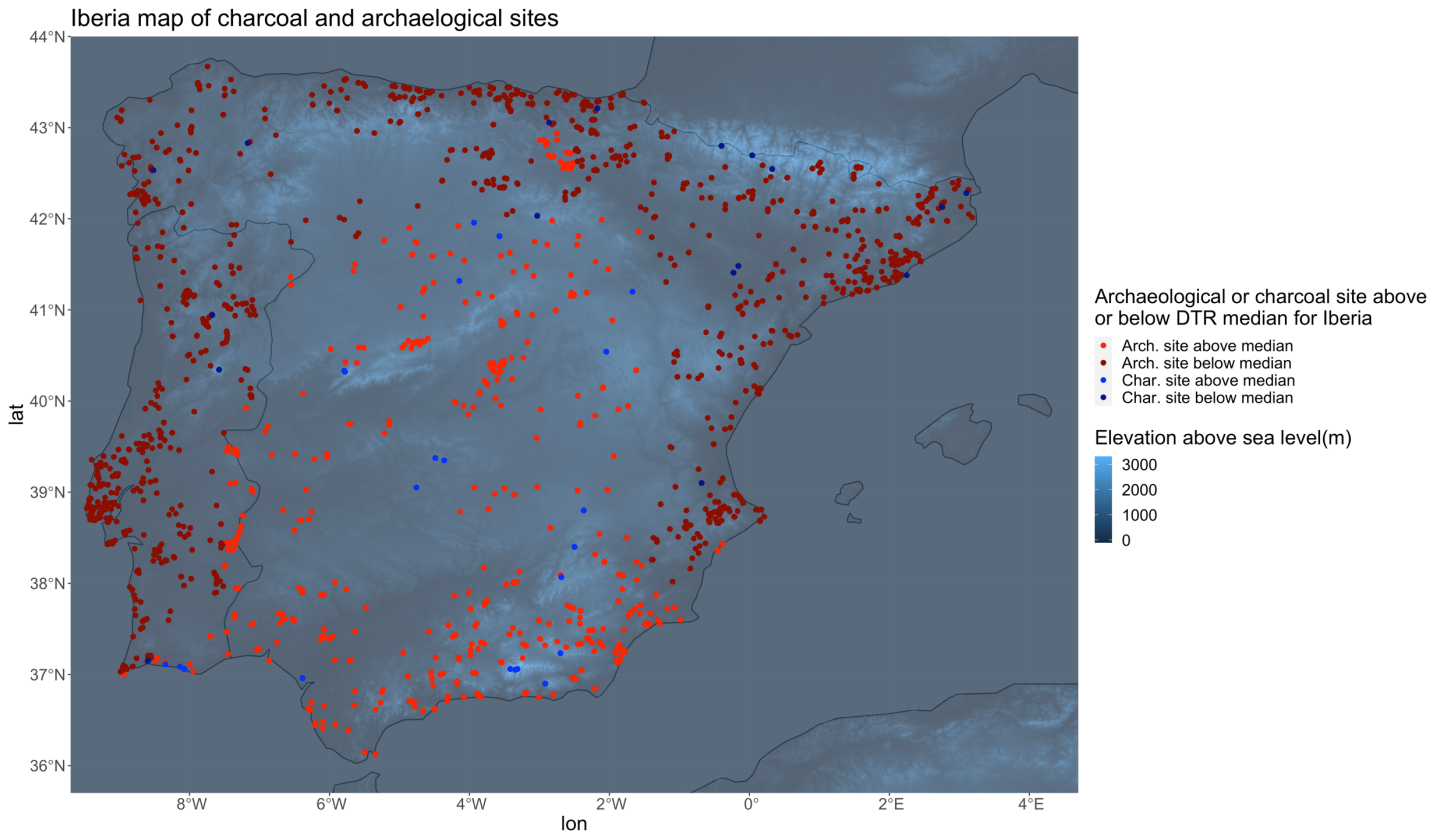


Supplementary information



- 53 charcoal sites
- ~6900 archaeological samples

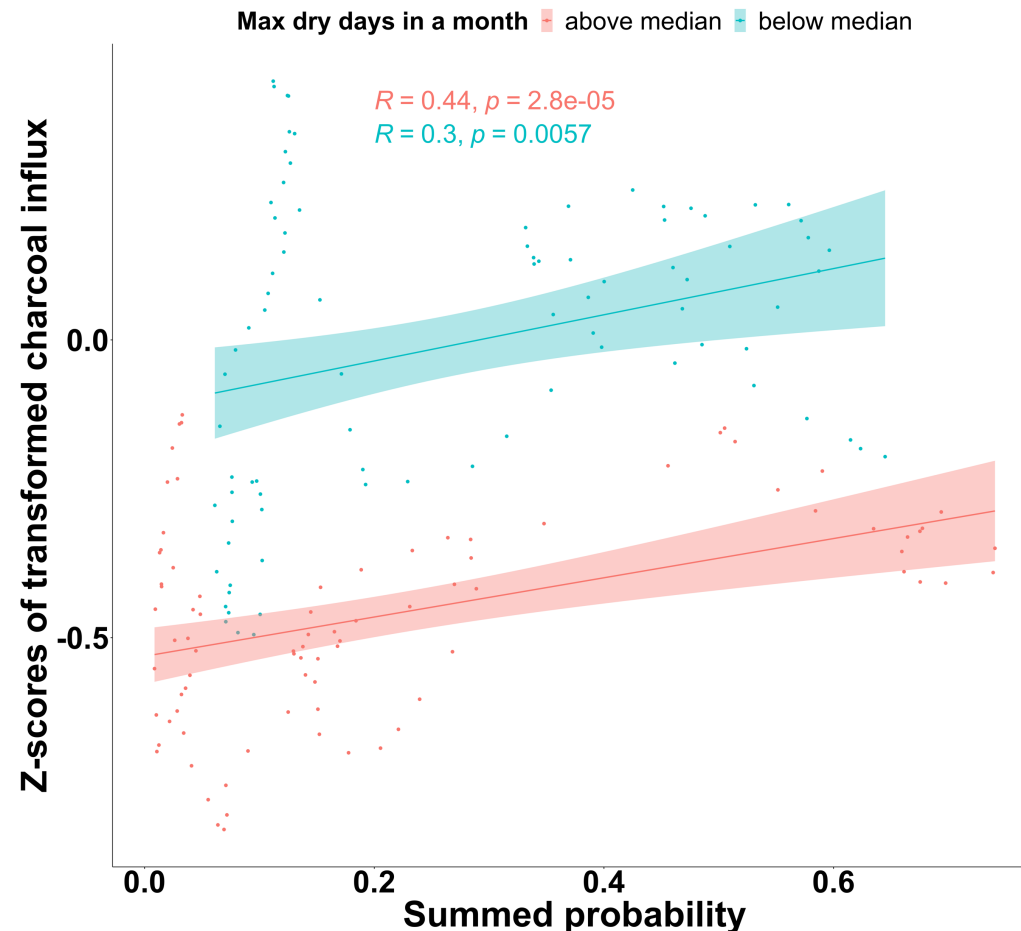
Supplementary information



Map corresponds to the correlations based on above and below the median maximum diurnal temperature range (DTR) for Iberia

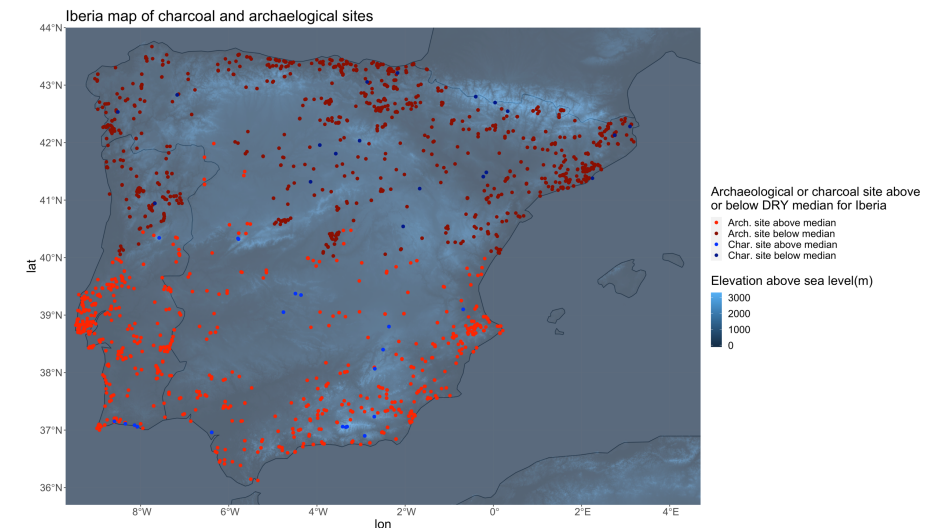
Spatial DTR calculated from from 2001-2016 annual data CRUNCEP V7 (Viovy, 2018)

Supplementary information

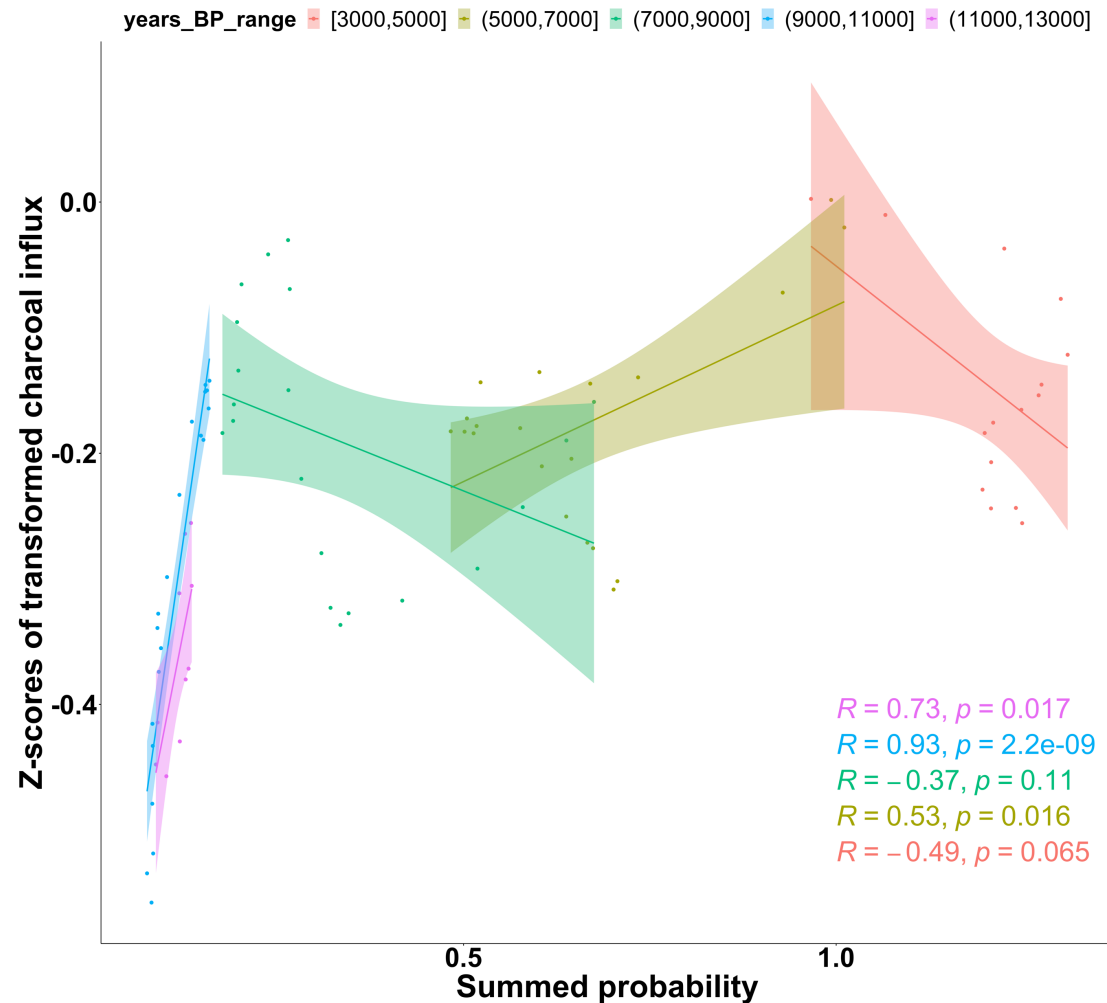


Example correlation:
above and below the
median maximum
number of dry days in a
month (DRY)

Spatial DRY
calculated from
from 2001-
2016 annual
data CRUNCEP
V7 (Viovy, 2018)



Supplementary information



Example correlation:
Correlations for each
2000-year time period