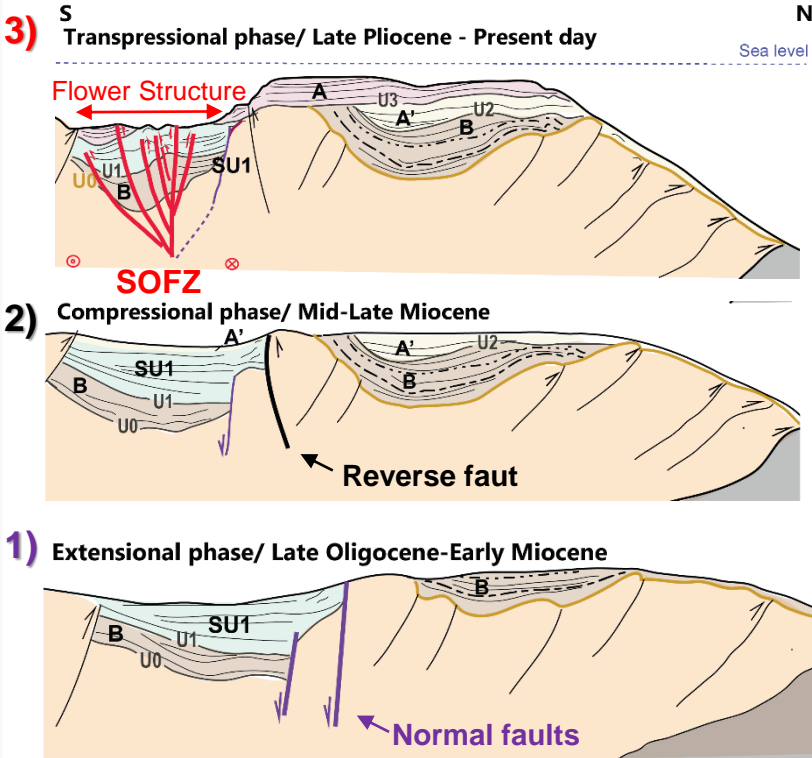


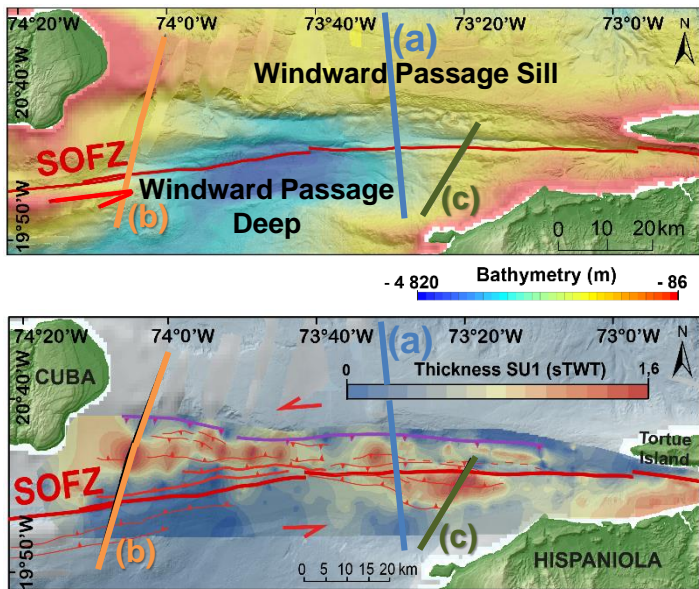
- ❖ **Northern Caribbean plate boundary**
- Oblique collision
 - Septentrional-Oriente Strike-slip fault zone (**SOFZ**)

❖ **Windward Passage tectonic evolution**

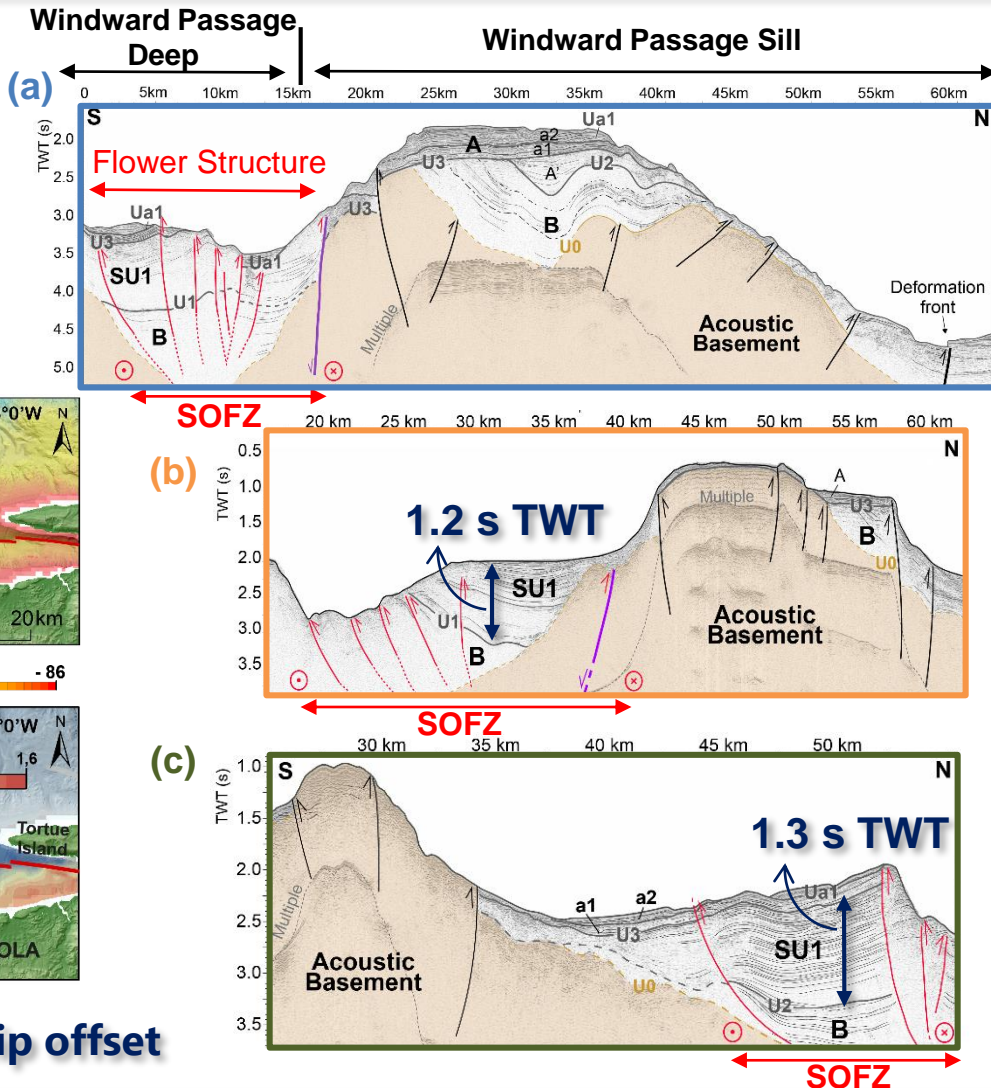


❖ **Windward Passage area**

- Distinct deformation styles
- Several stages of deformation
- Strike-slip offset



~ 80 km of left-lateral strike-slip offset



- The onset of the SOFZ in the Windward Passage has a Pliocene age
- The deformation is polyphase along the plate boundary since Oligocene
- The neoformed SOFZ is localized by obliquity and structural inheritance