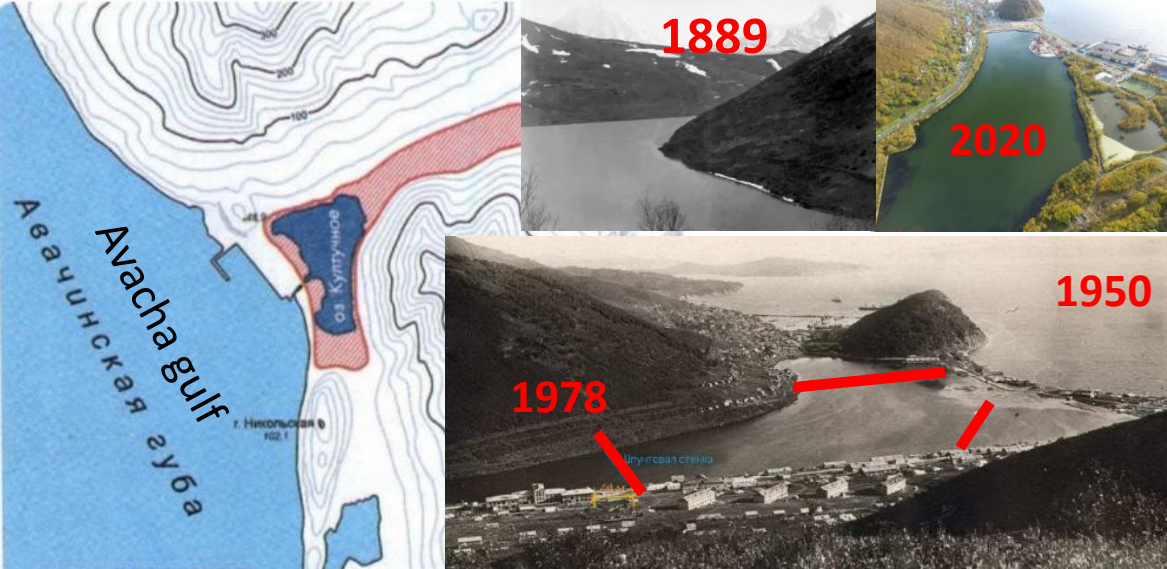


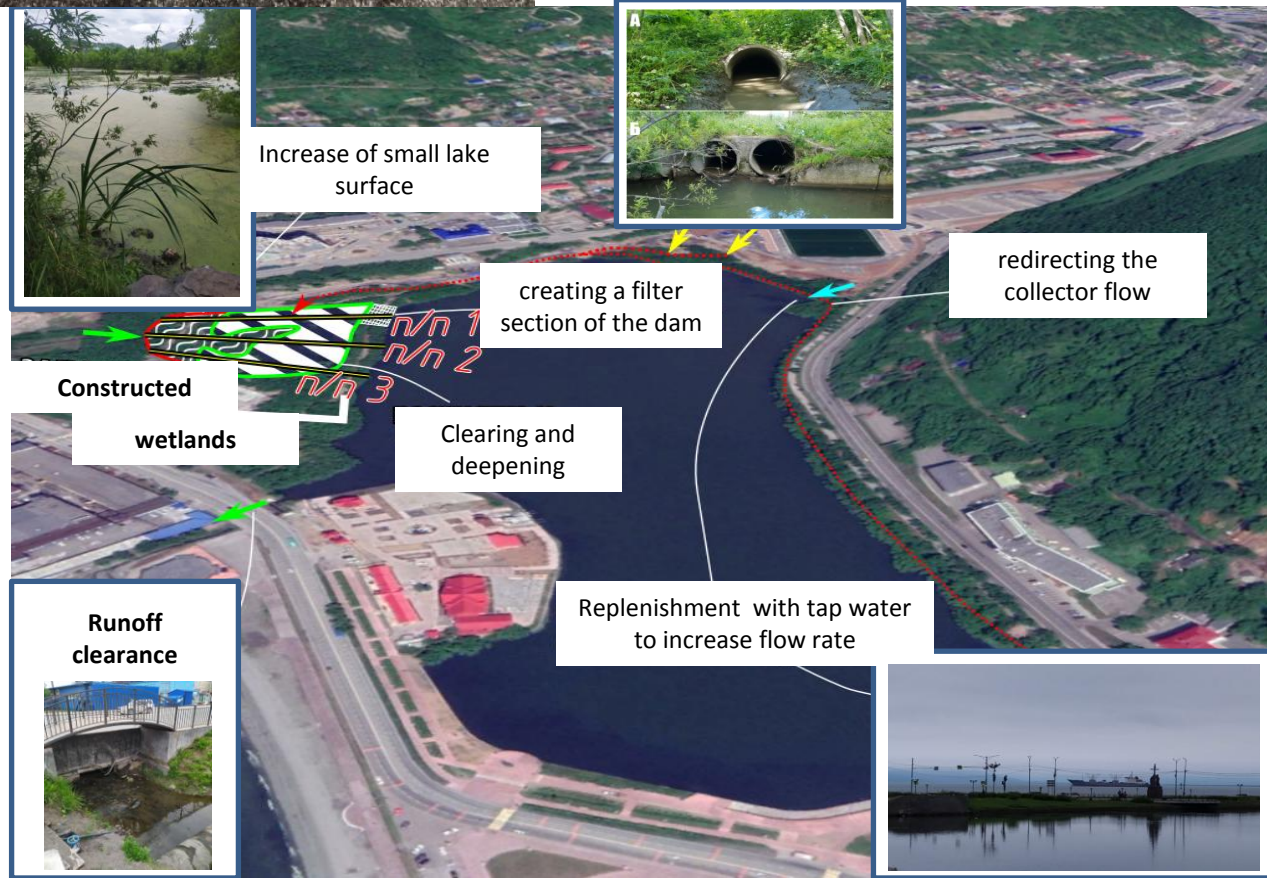
# Hydroecological status of Kultuchnoe lake (Petropavlovsk-Kamchatskiy)

Maria Grechushnikova ([allavis@mail.ru](mailto:allavis@mail.ru)),  
Sergey Chalov

**Research program:**  
bathymetric survey, hydrological regime, chemical composition of lake water and collectors, sediment intake, bottom sediments, water-bottom boundary exchange, methane emission, hydrobionts.



- located in the historical center
- Ethno-village for tourists
- recreational zone
- area and volume of the lake was repeatedly reduced
- in 1990s the lake was divided into two parts
- household waste water inflow was removed
- decrease in the level of pollution
- it still accepts 4 drainage collectors



**Reconstruction proposals:**