



SPACEML

ML for Space Science, Exploration and all Humankind

Our Team



Ajay
Krishnan



Tarun
Narayanan



Yujeong
Lee



Walker
Stevens



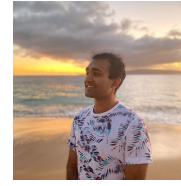
Sumanth
Ramesh



Mandeep
Khokhar



Subhiksha
Muthukrishnan



Rudy
Venguswamy

Advisors



Anirudh
Koul



Satyarth
Praveen



Meher
Kasam



Siddha
Ganju

Further Contributors



Fernando



Mike



Shivam



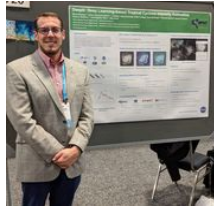
Deep



Surya



Erin



Brian



Abhigya



Rajeev



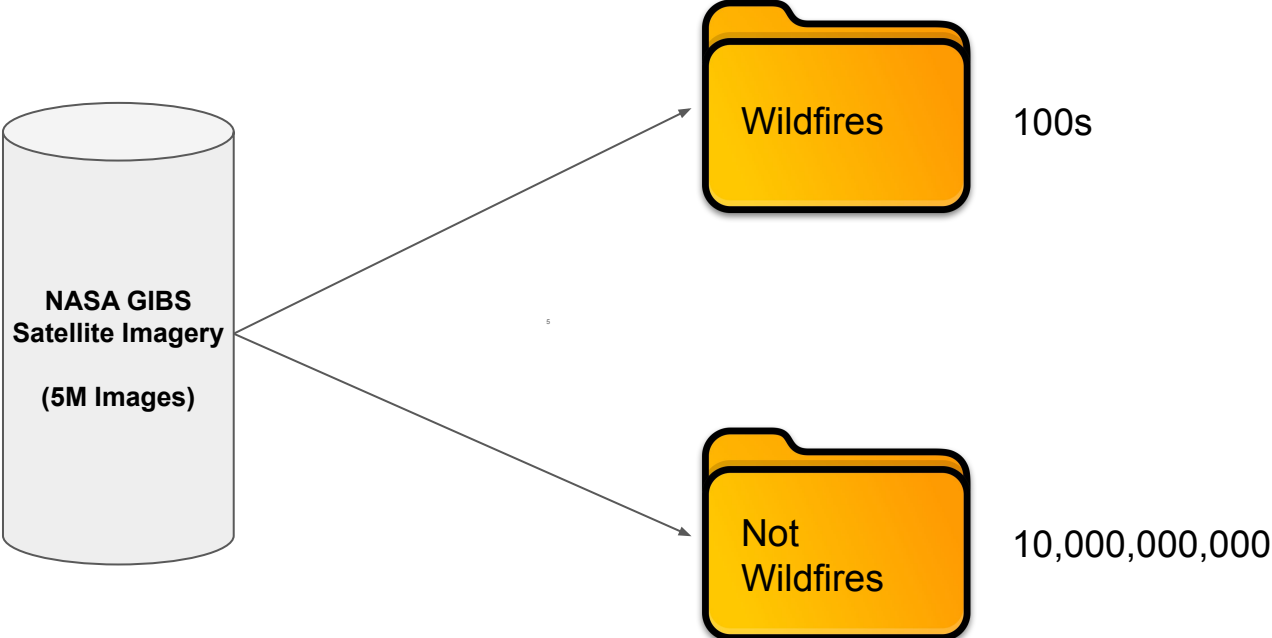
Esther



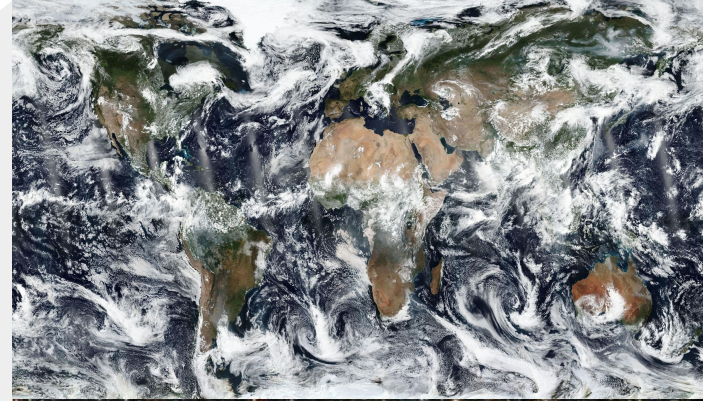
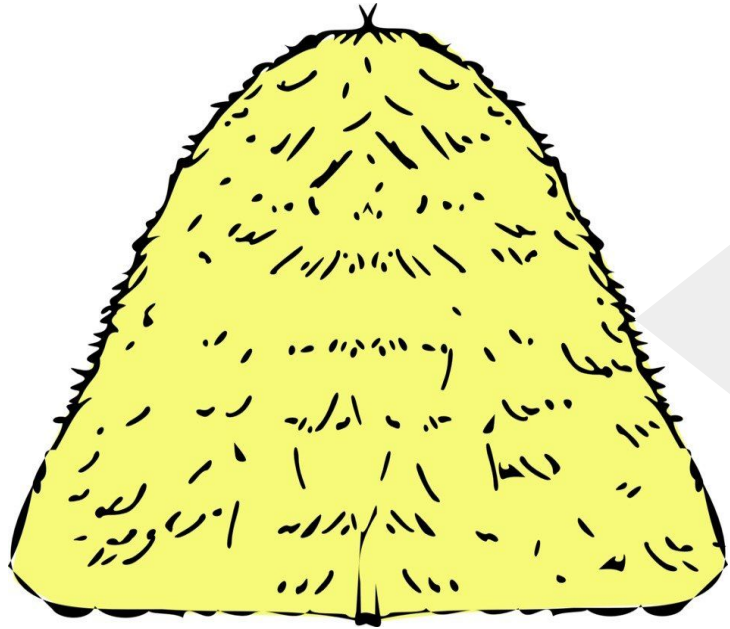
Sarah



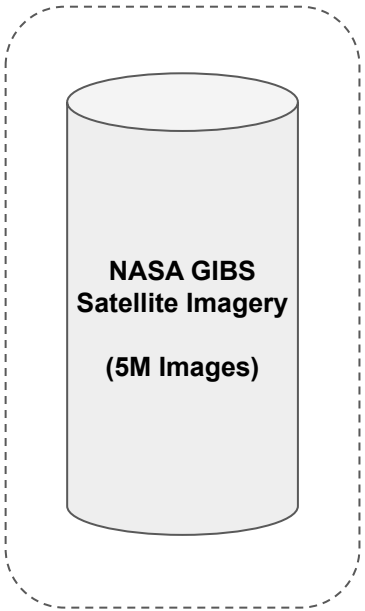
40 *Petabytes*



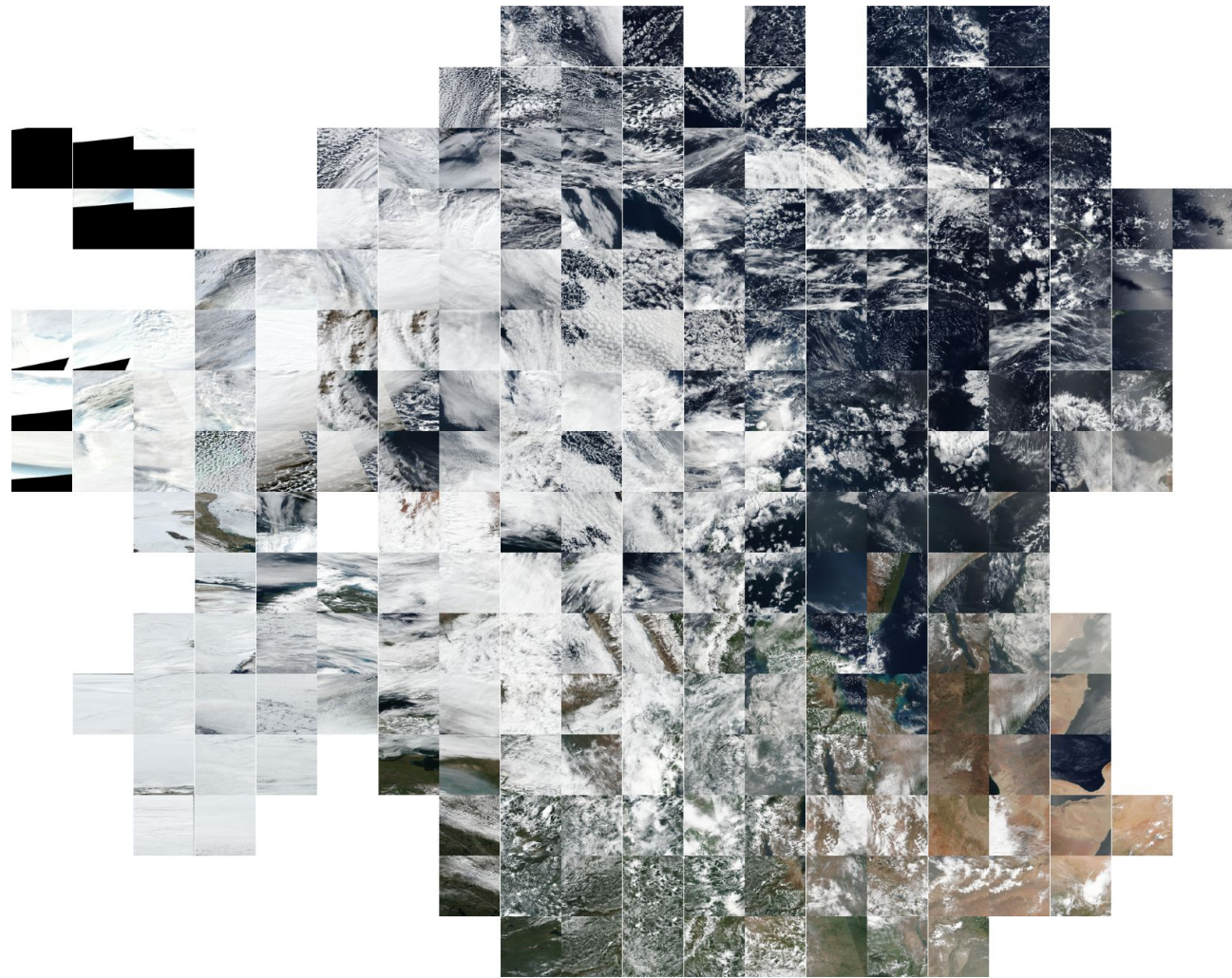
Finding a Needle in a Haystack



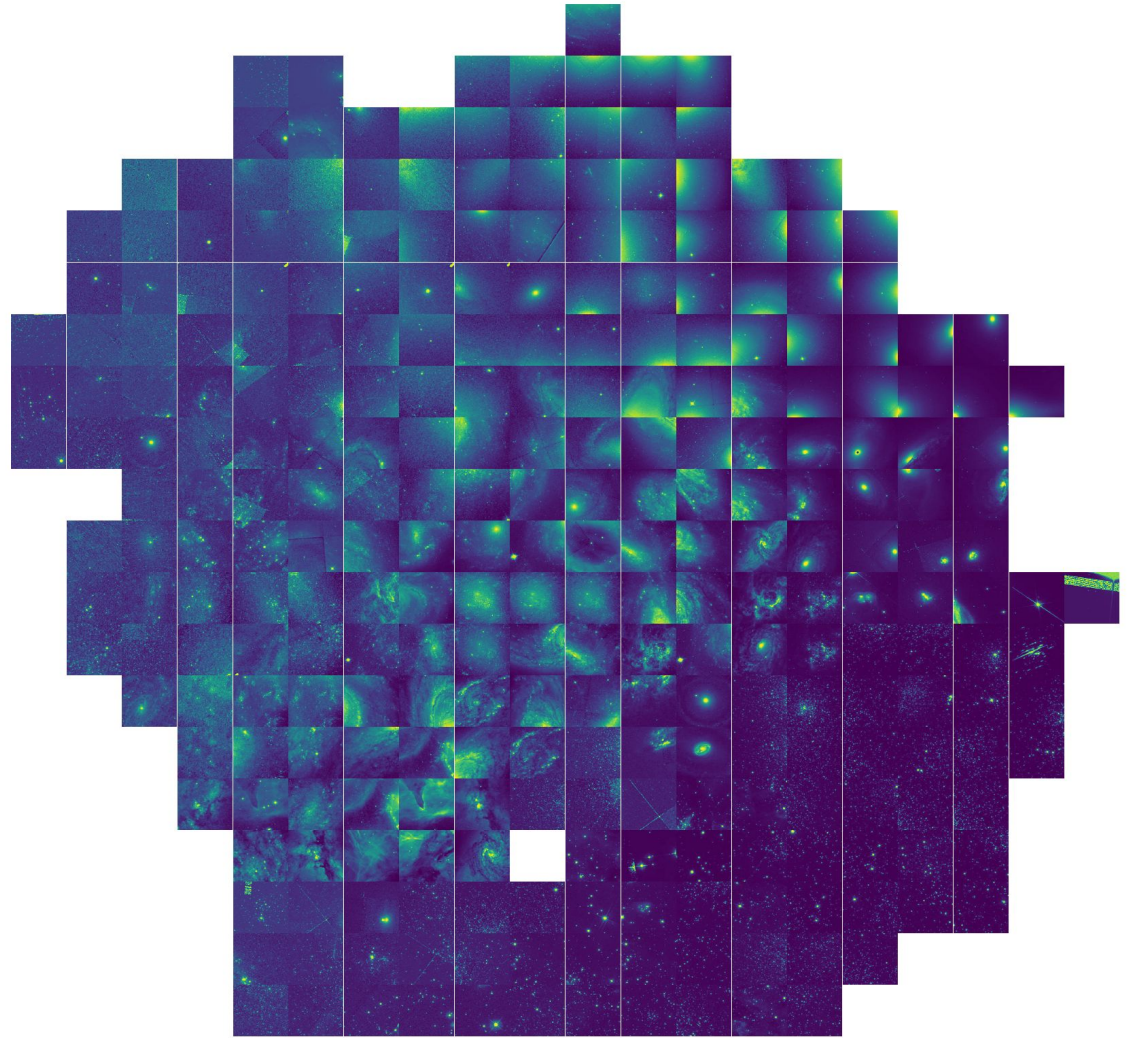
Enter: ***Self-Supervised Learning***



Earth



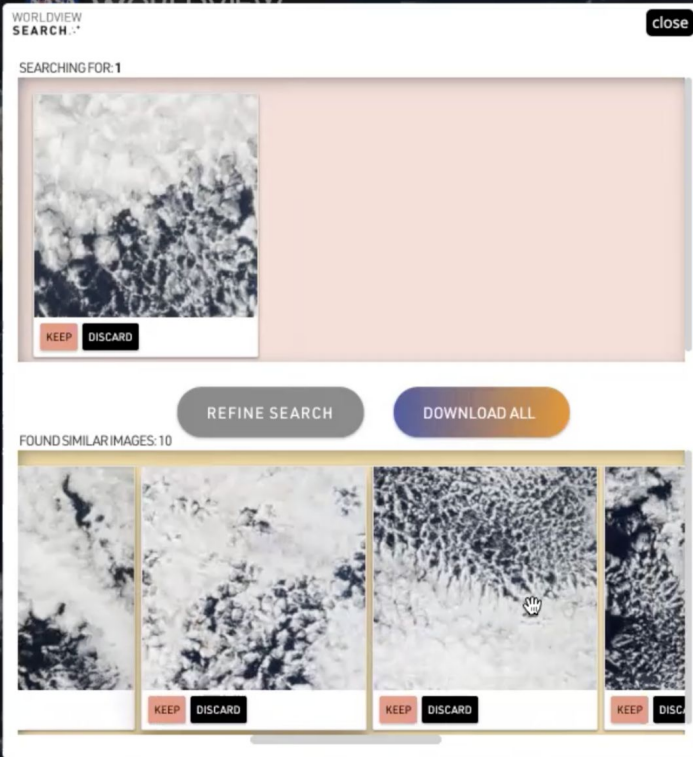
Hubble



Earth

WORLDVIEW SEARCH

SEARCHING FOR: 1



KEEP DISCARD

REFINE SEARCH DOWNLOAD ALL

FOUND SIMILAR IMAGES: 10

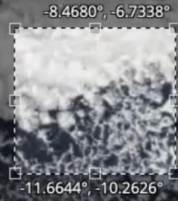
KEEP DISCARD

KEEP DISCARD

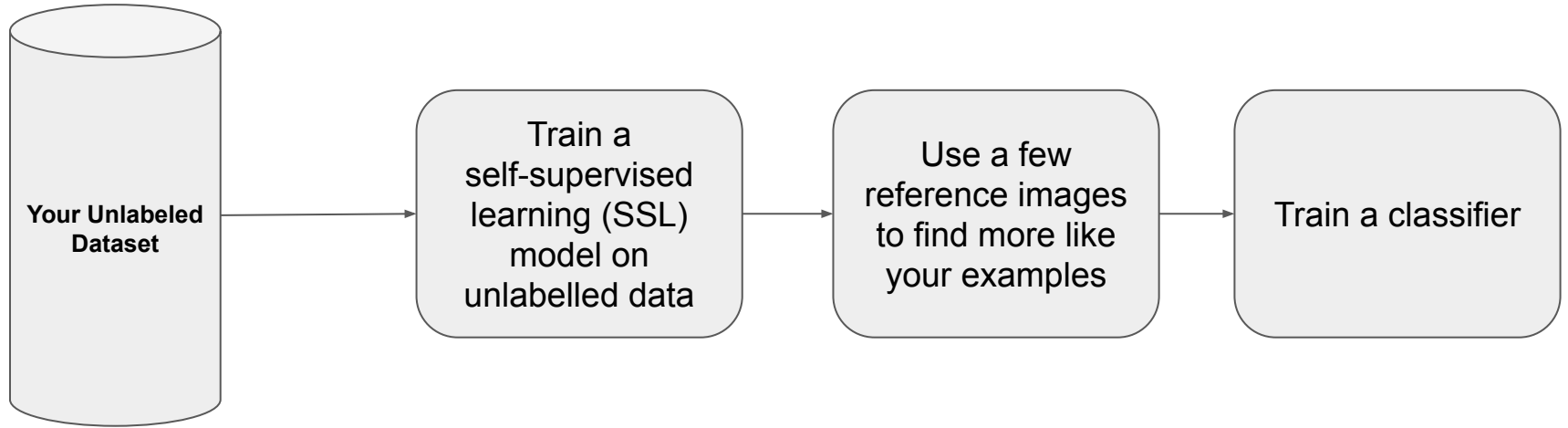
KEEP DISCARD

KEEP DISCARD

2020 OCT 02 1 DAY



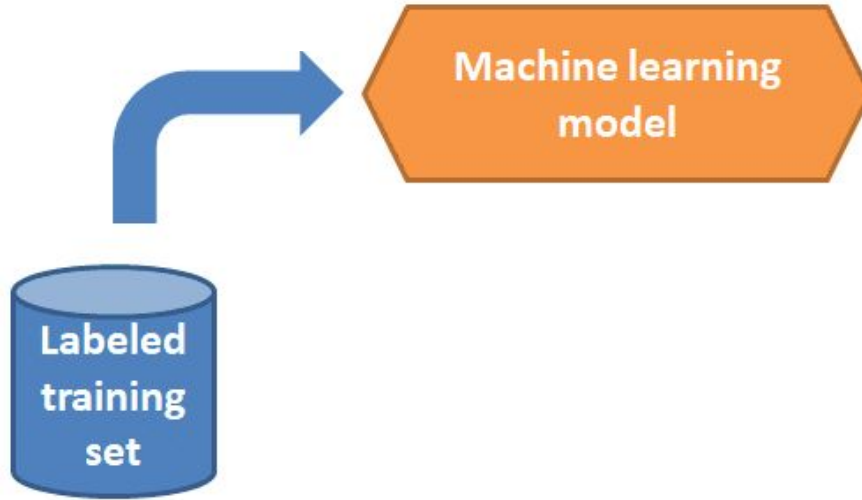
Curator



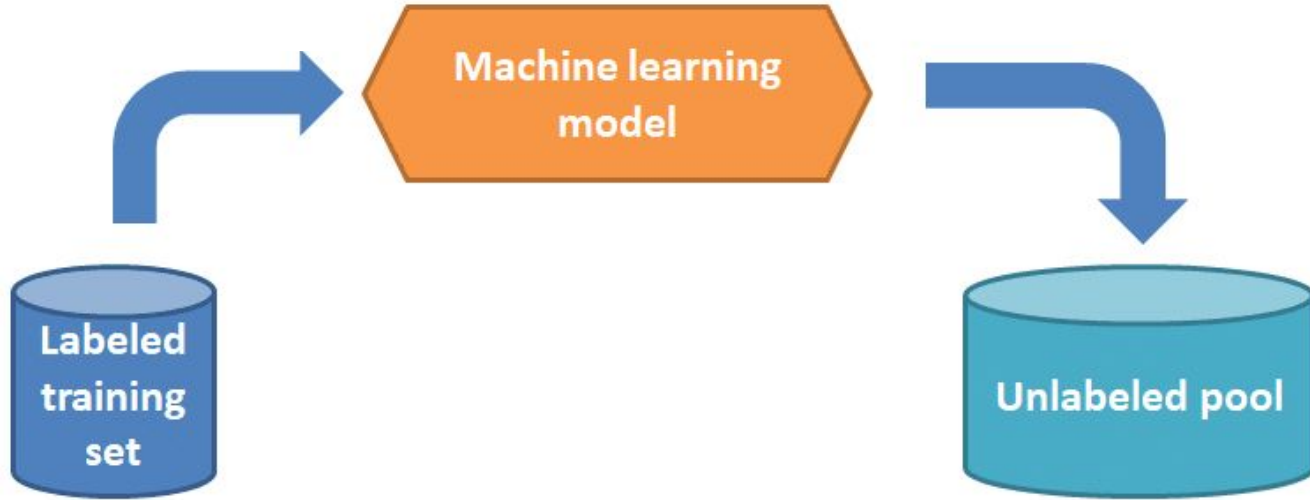
What is Active Learning?



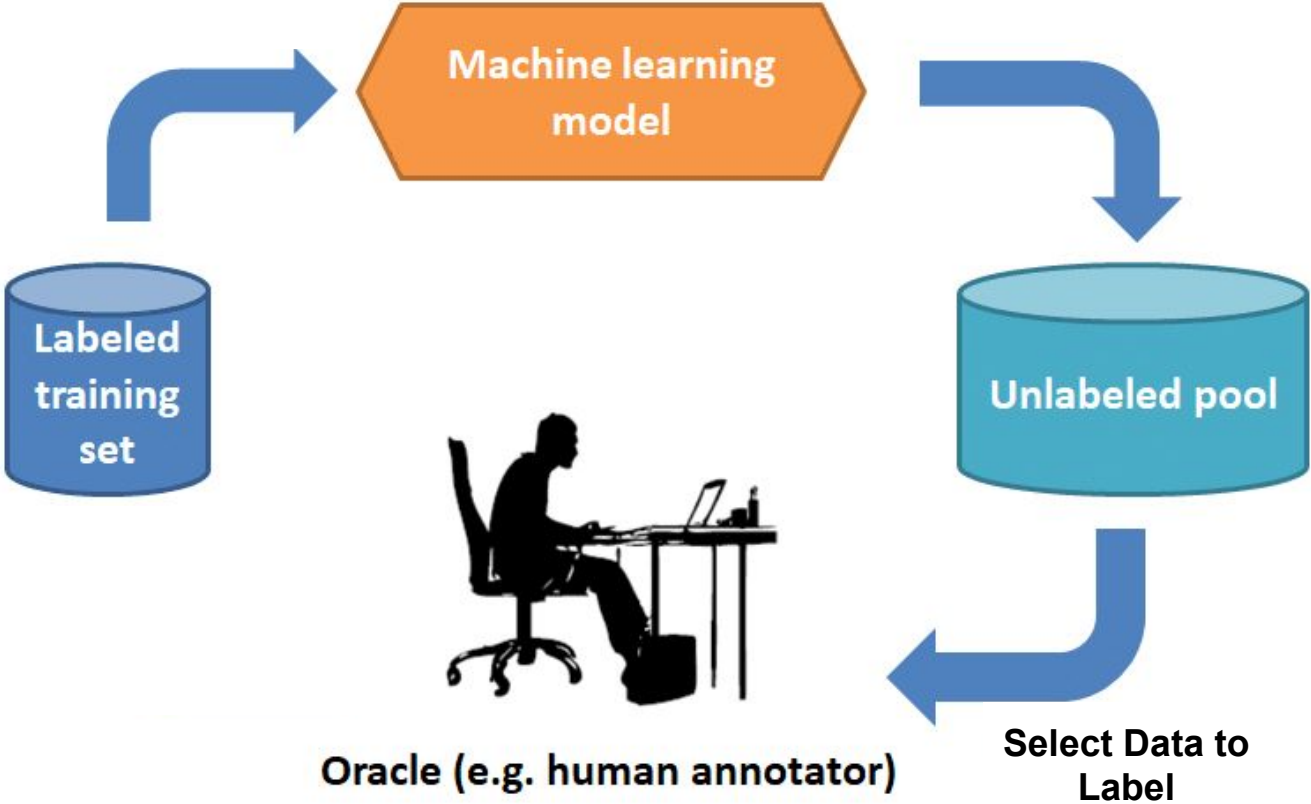
What is Active Learning?



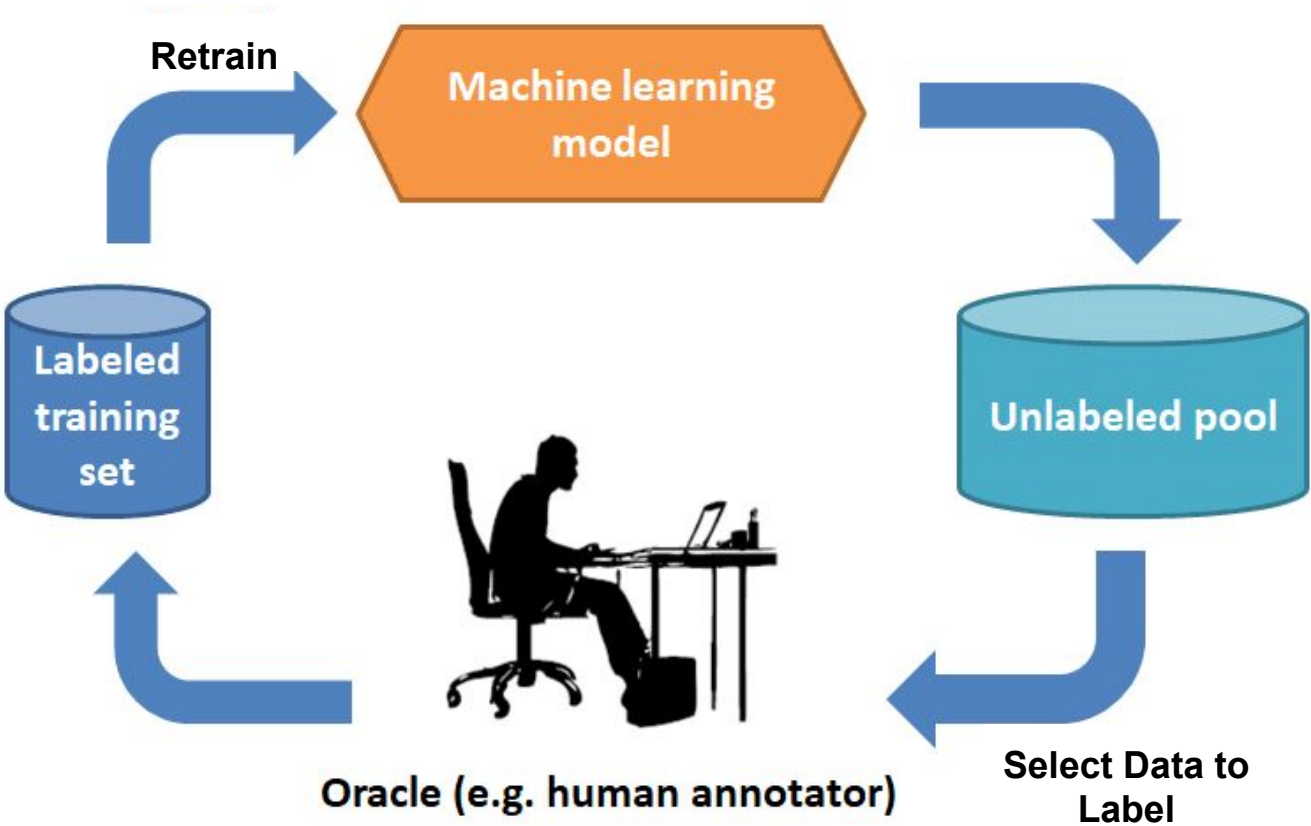
What is Active Learning?



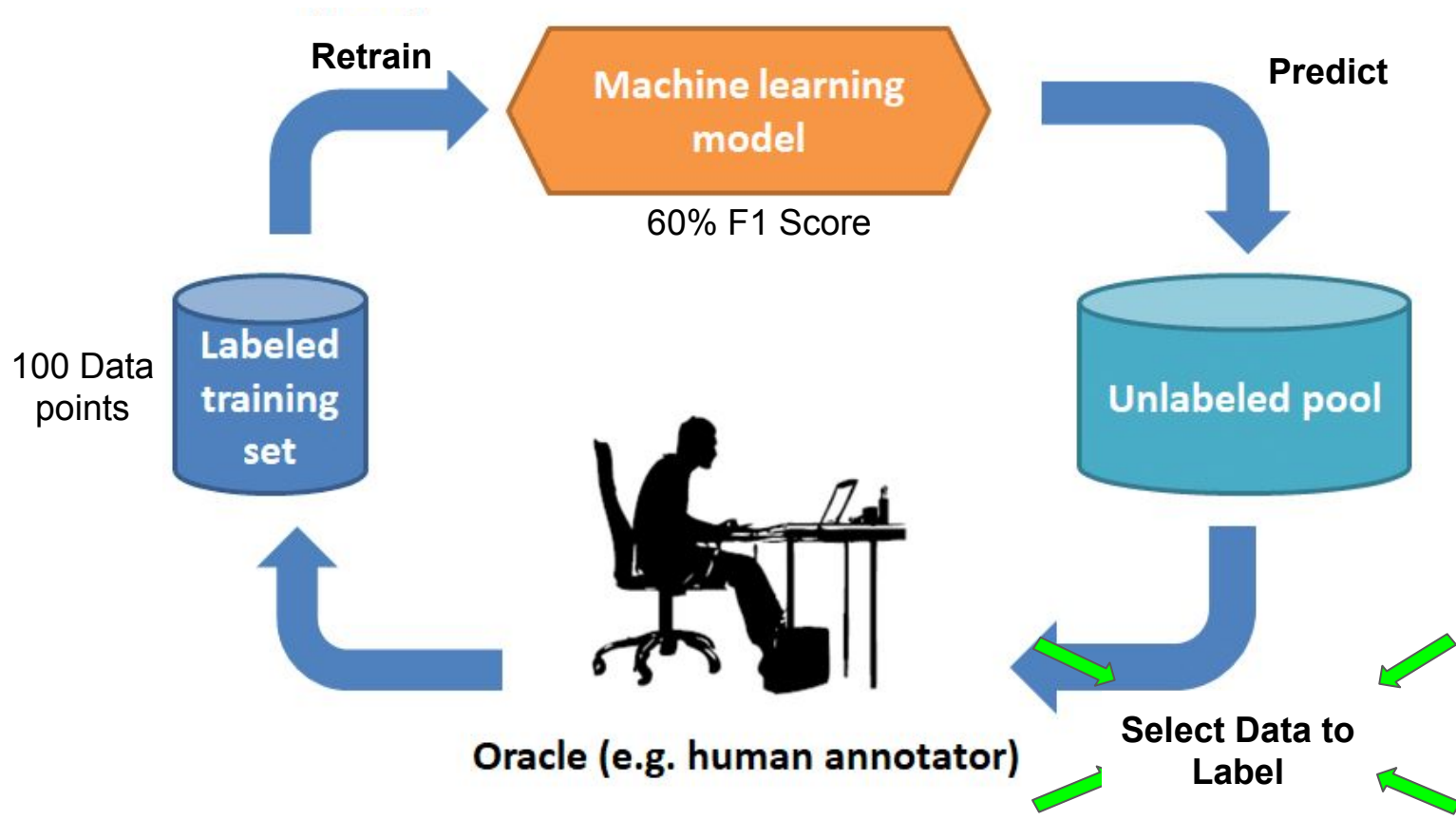
What is Active Learning?



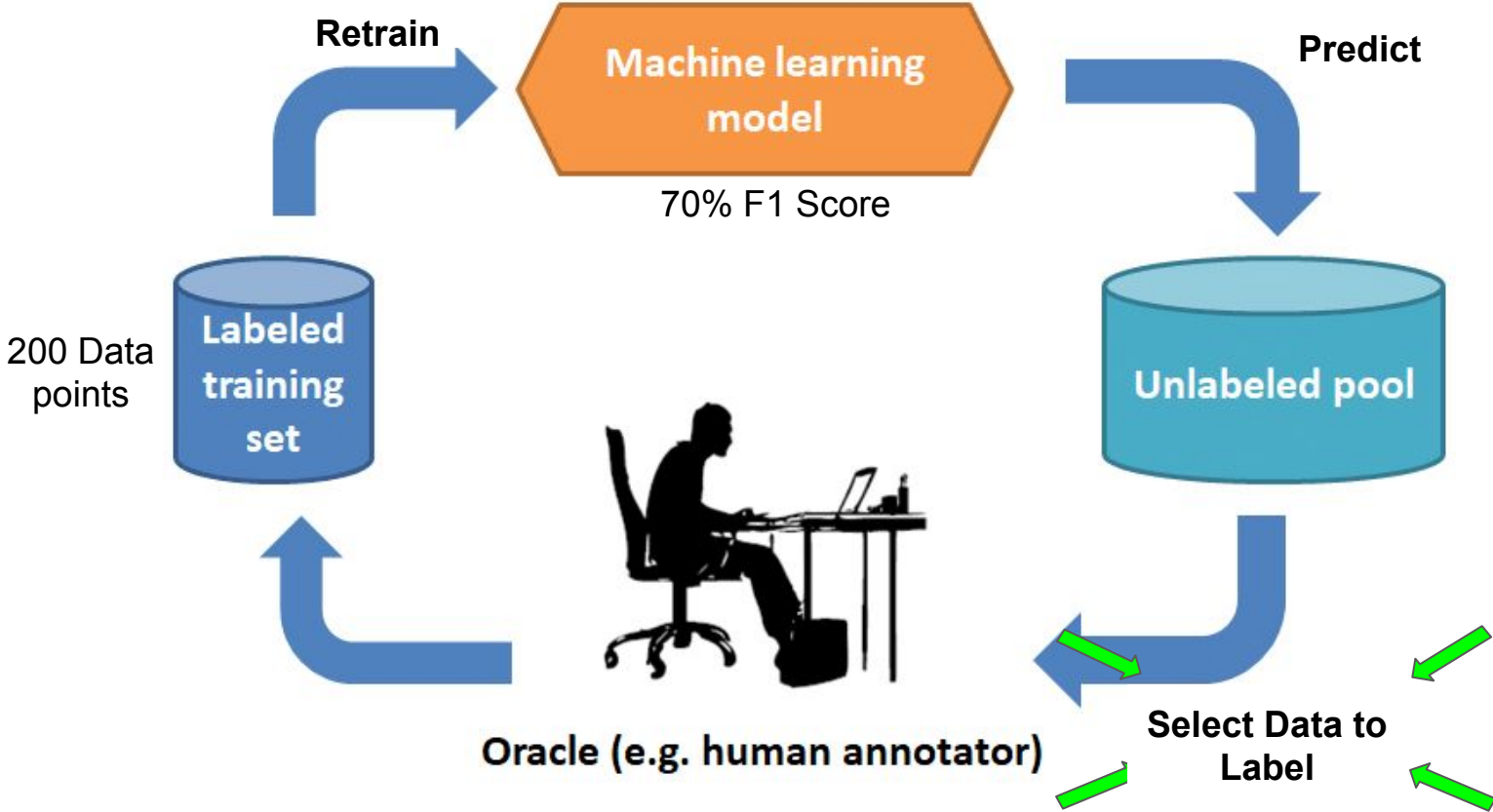
What is Active Learning?



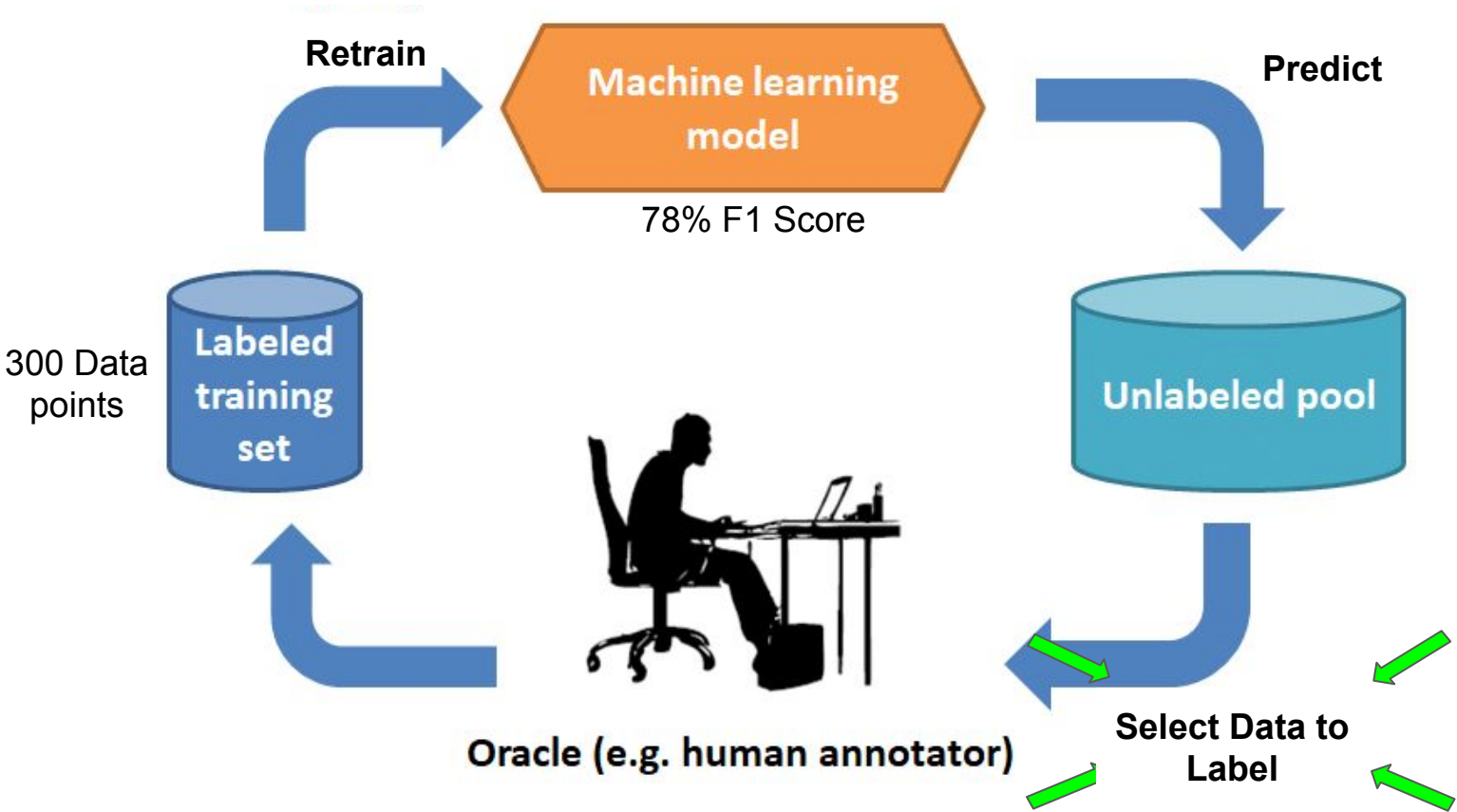
What is Active Learning?



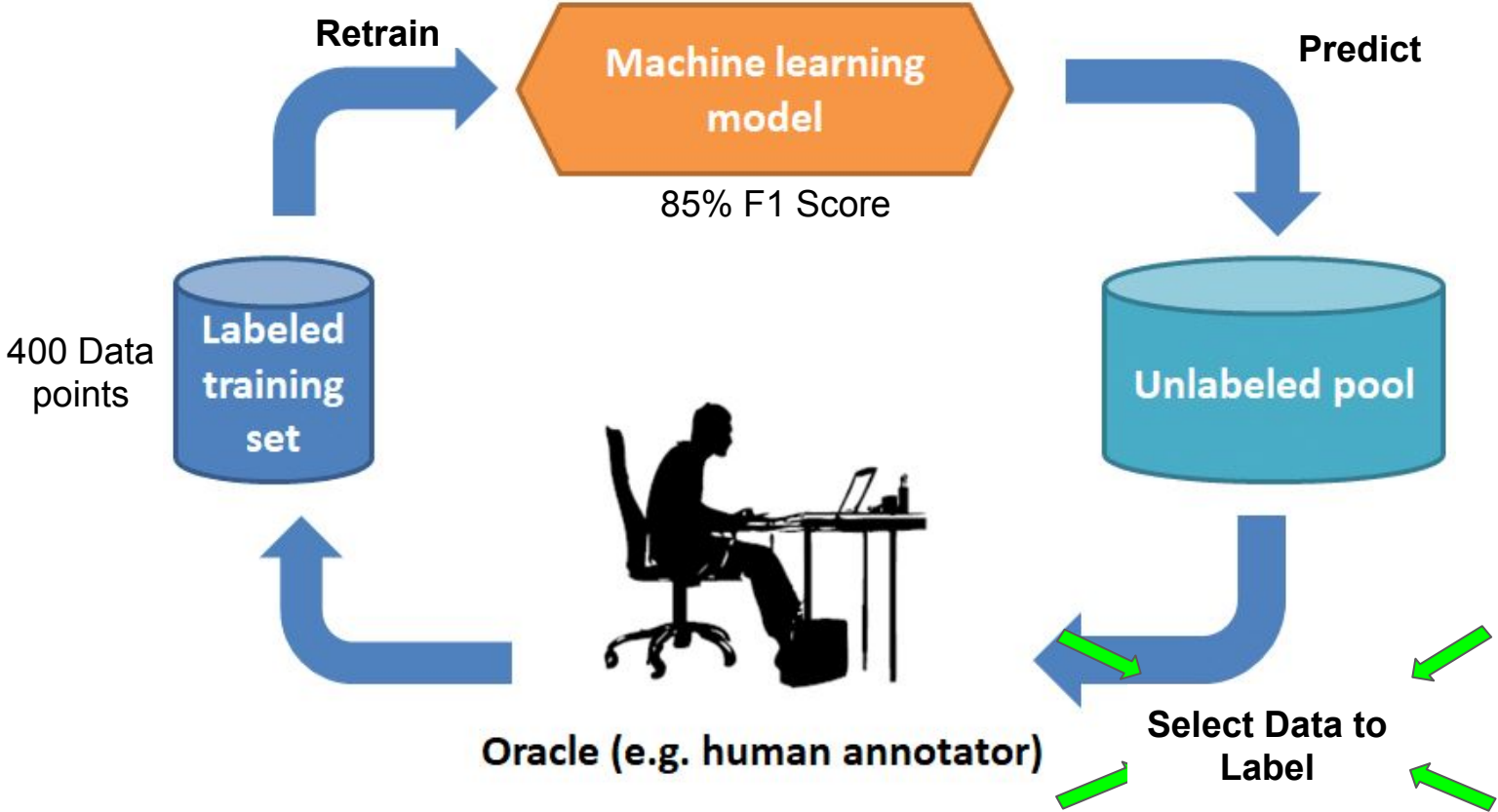
What is Active Learning?



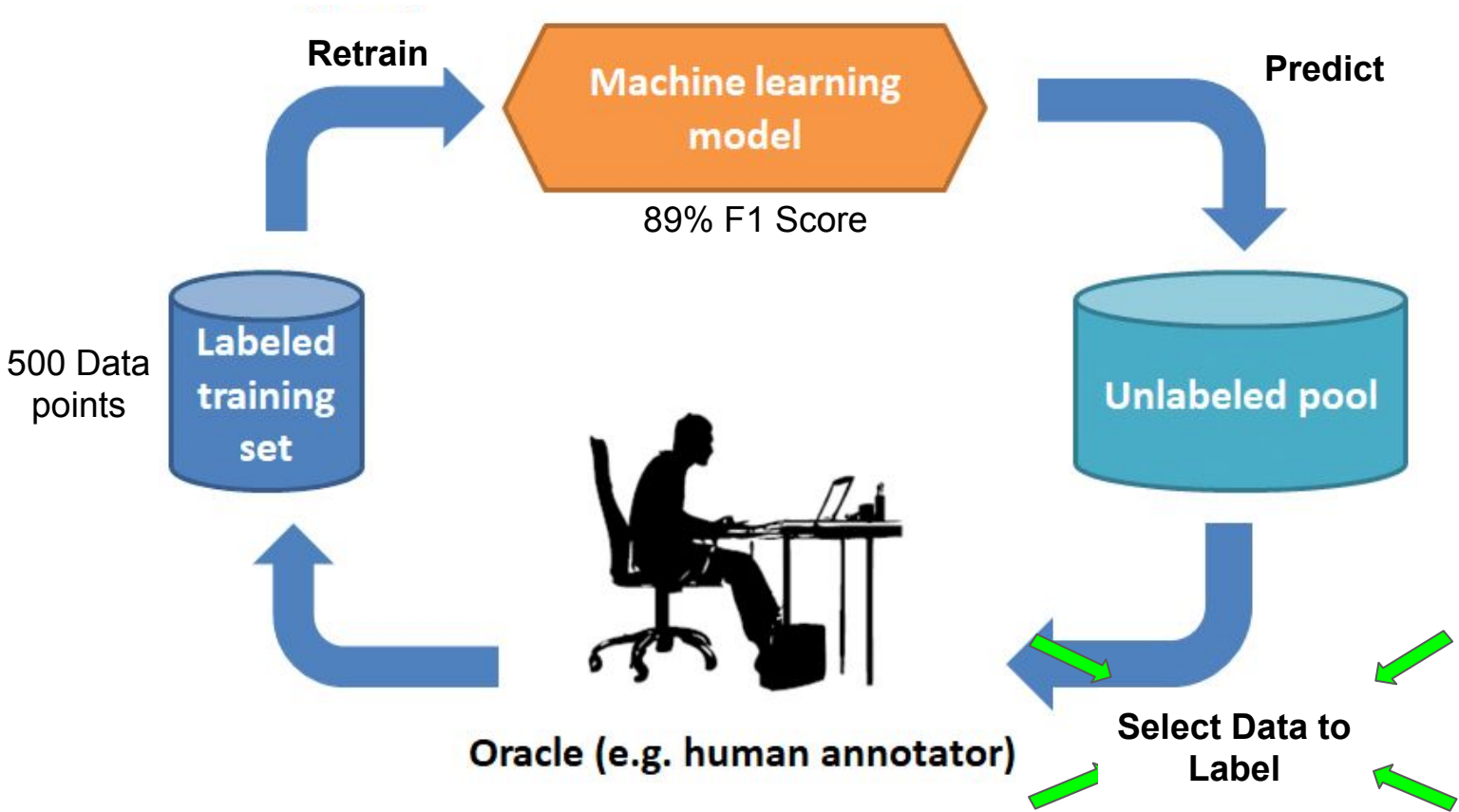
What is Active Learning?

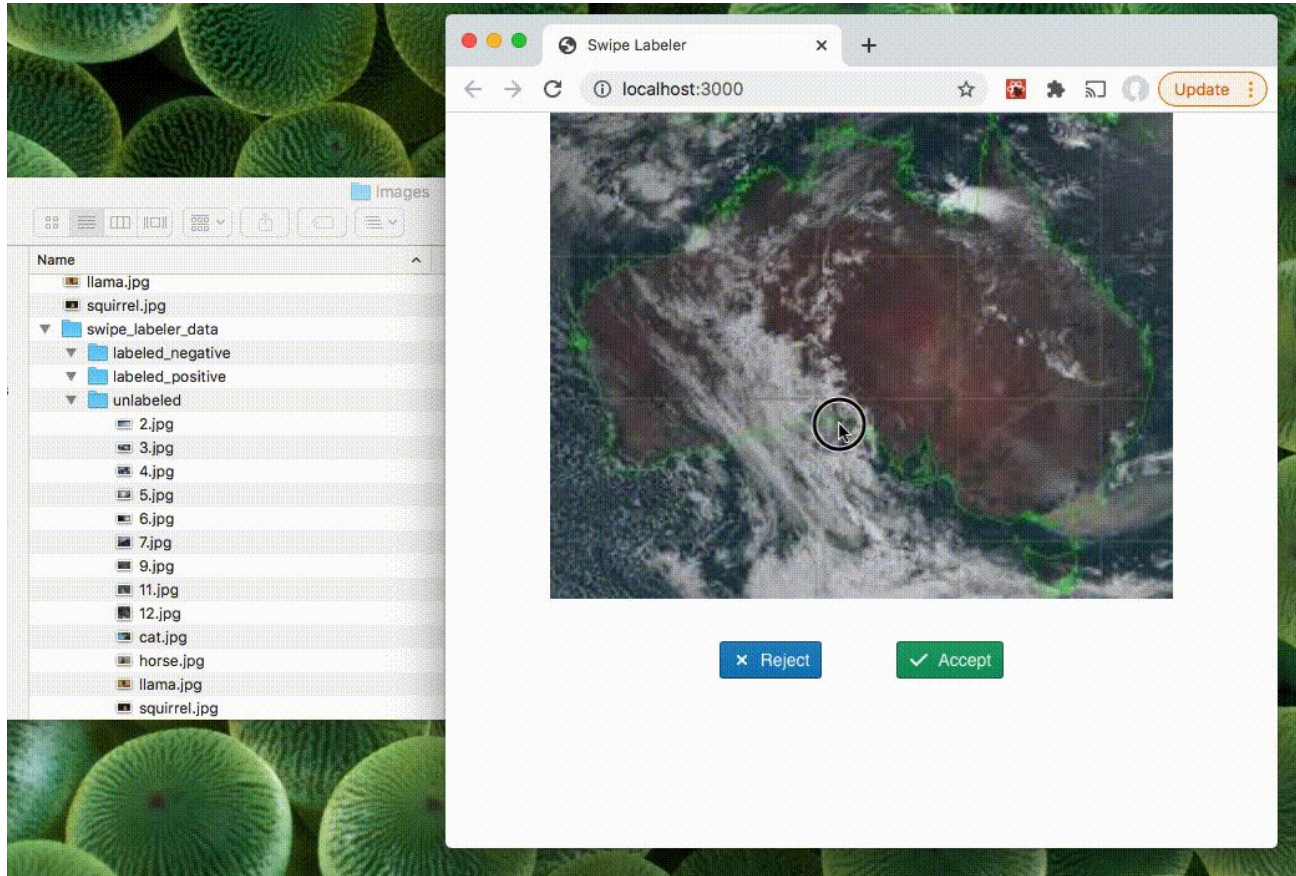


What is Active Learning?



What is Active Learning?





Swipe-Labeler:
Label Data
Easily!

We did-this
for islands!

Using this →



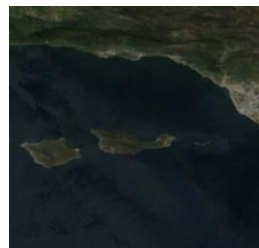
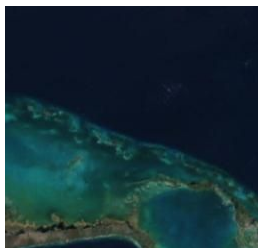
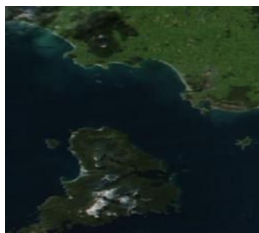
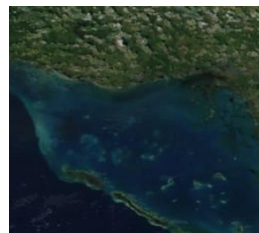
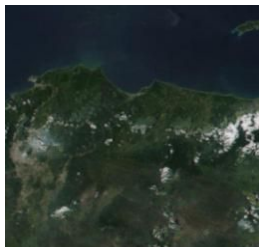
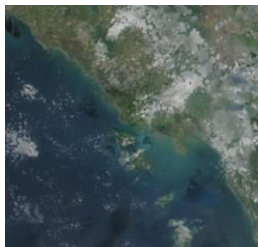
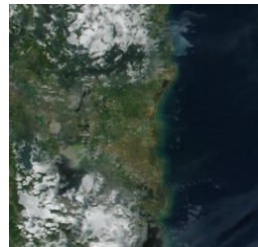
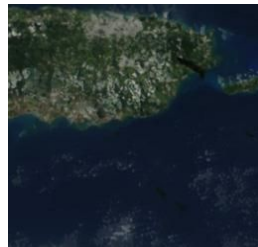
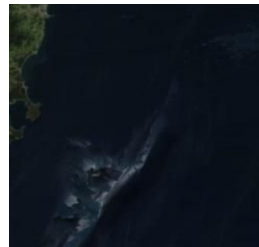
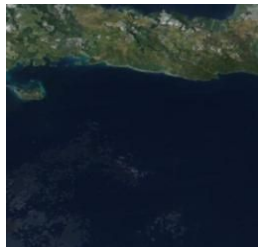
out of **5M** potential tiled images.

We Identified

~1000 islands out of

With probability > 0.75

In just 52 minutes



This Experiment Could Have Been Expensive!

Assumptions	Details
5 Million Tiles Daily	Tiles at different resolutions
5 Seconds an Image (7K Hours)	Our Experience as Unskilled Labeler
\$15/Hr to Hire Annotator	\$105,000 Annotation Cost

~~This Experiment Could Have Been Expensive!~~

Assumptions	Details
5 Million Tiles Daily	Tiles at different resolutions
5 Seconds an Image (7K Hours)	Our Experience as Unskilled Labeler
\$15/Hr to Hire Annotator - Citizen Science!	\$105,000 Annotation Cost!

Priceless

To go from
unlabeled to
categorized
takes

2 commands

Link²

```
rudy@vm129: python train.py
  --technique SIMCLR --DATA_PATH /content/satellite_images --epochs 100 --batch_size 256
  --model resnet50

rudy@vm129: python activelearner.py
  --DATA_PATH /content/satellite_images --reference hurricane1.png --epochs 50 --batch_size 256
  --model ssl.ckpt --steps 10
```



Curator

Rapidly curate a dataset for scientific studies without the need for machine learning, self supervised ML coding expertise.

Published by [SpaceML](#) • [About SpaceML](#) • [Quick Colab Example](#)

Thank you!

*Thank you to Janusz Lisiecki, Joaquin Anton and the Nvidia DALI team
for their guidance as we develop Curator!*

rudy.venguswamy@gmail.com

Citations

1. Chen, T., & Hinton, G. (2020, April 08). Advancing self-supervised and semi-supervised learning with simclr. Retrieved April 03, 2021, from <https://ai.googleblog.com/2020/04/advancing-self-supervised-and-semi.html>
2. <https://github.com/spaceml-org/Self-Supervised-Learner>