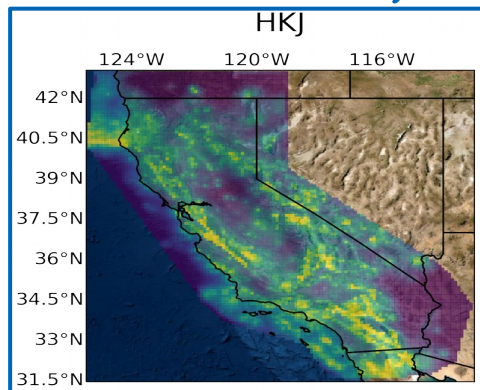


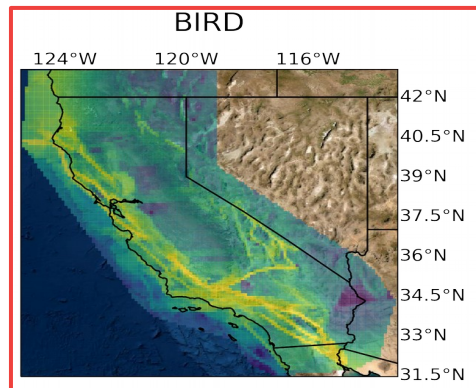
# Prospective evaluation of multiplicative hybrid earthquake forecast models for California

J.A. Bayona, W. Savran, M. Werner & D.A. Rhoades

Smoothed seismicity



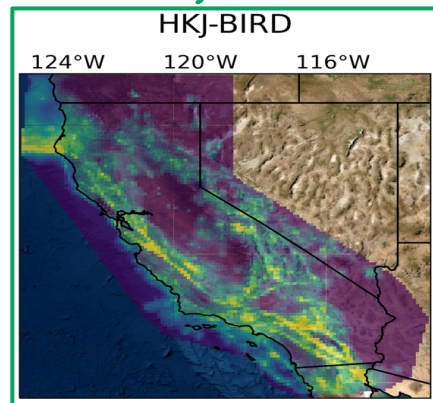
Tectonic information



$$\lambda_{Hi} = \lambda_{1i} \times f(\lambda_{2i})$$

$$f(\lambda) = \exp[a + b(\log(1 + \lambda))^c]$$

Hybrid



Consistency test	Likelihood function	Likelihood function
Number	Poisson	Negative binomial
Spatial	Poisson	Binary
Likelihood	Poisson	Binary

