



Global attribution of anthropogenic and lightning fires

Sander Veraverbeke, s.s.n.veraverbeke@vu.nl

T. Janssen, G. van der Werf, D. van Wees, W. Xu, D. Finney, M. Jones

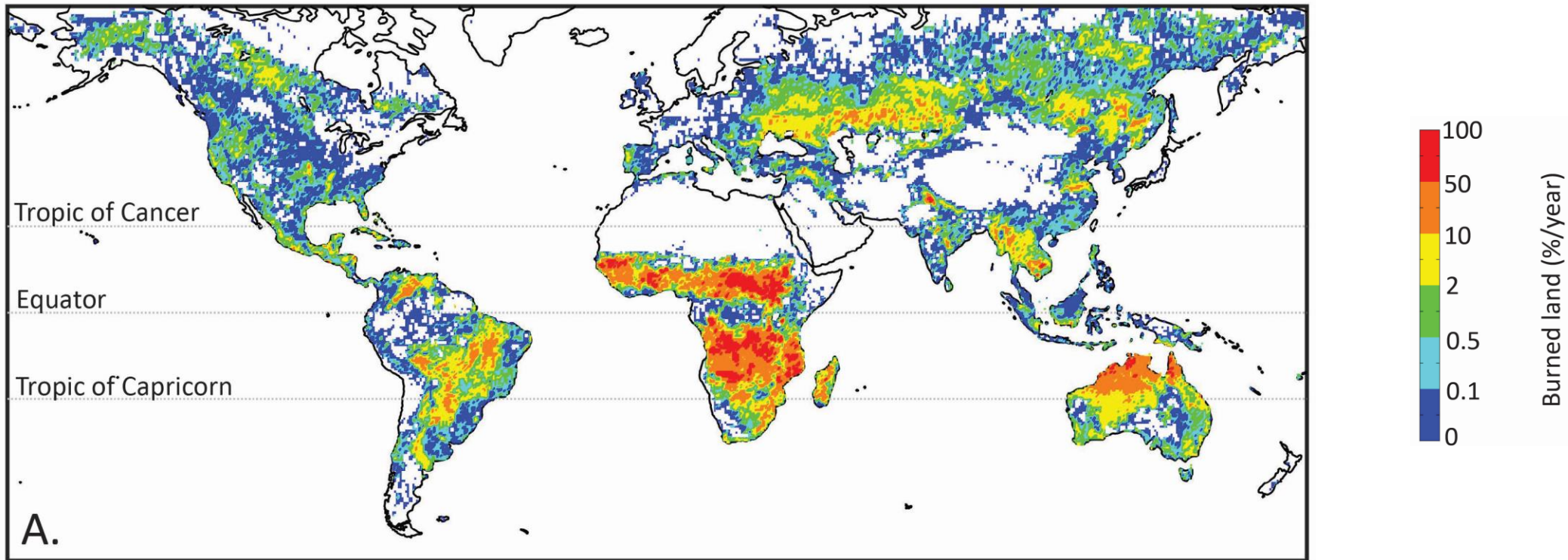


Climate & Ecosystems Change research group

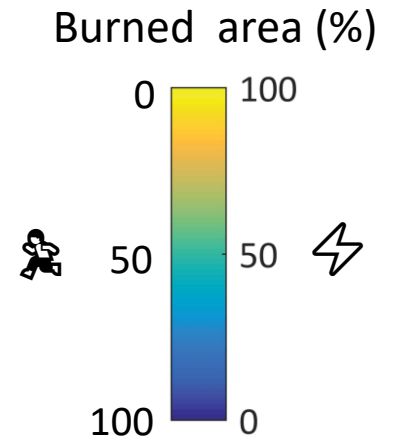
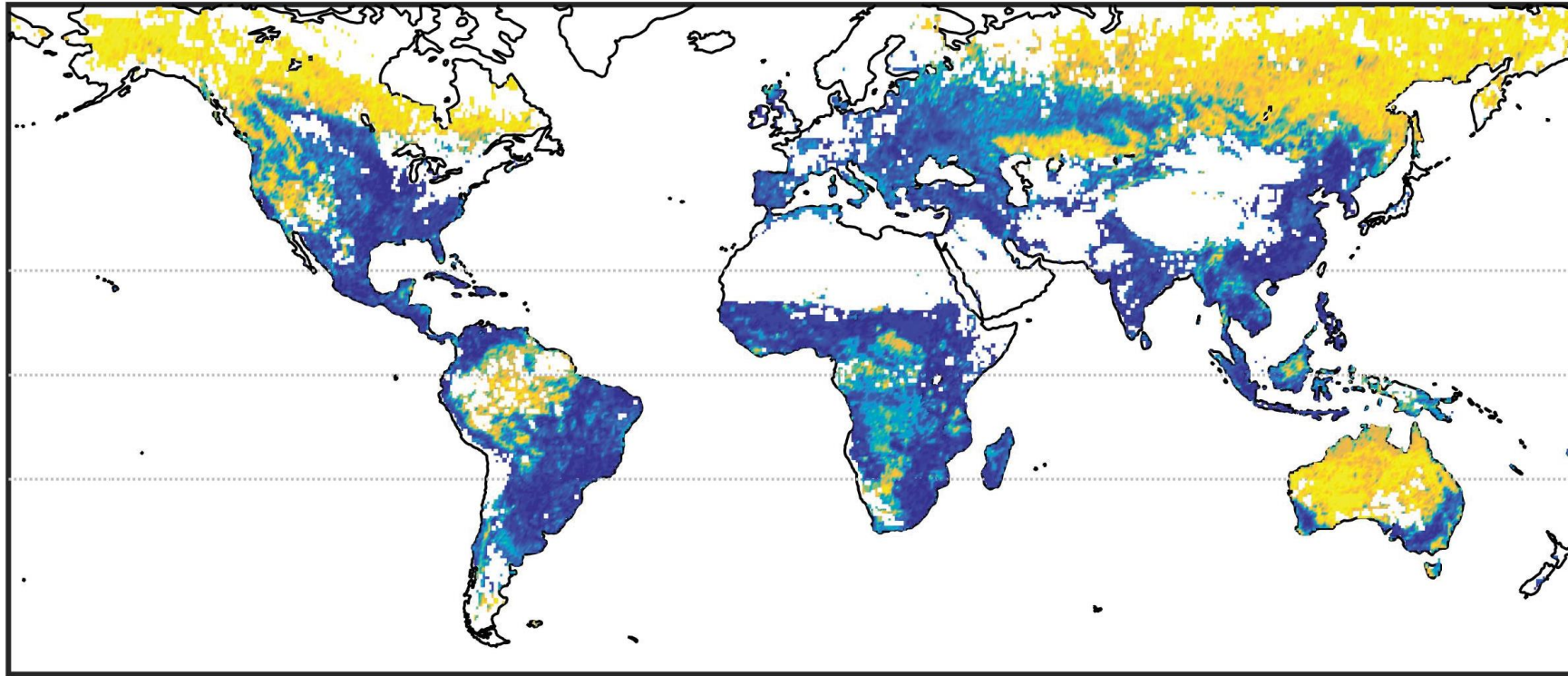


VRIJE
UNIVERSITEIT
AMSTERDAM

Global fire cause attribution



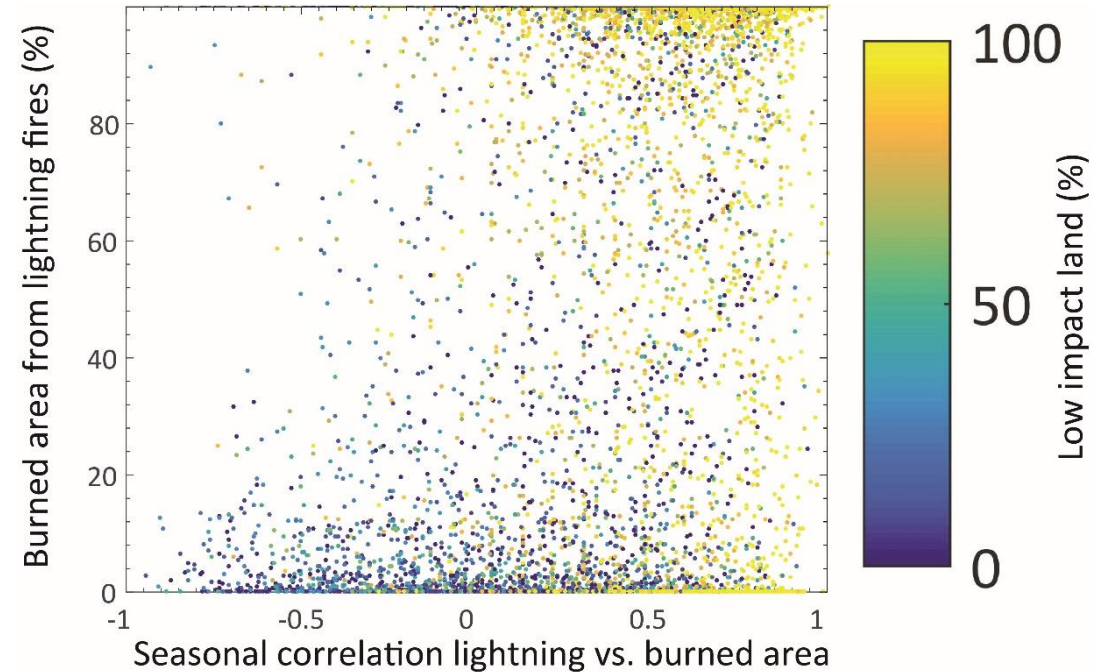
Global fire cause attribution



Global fire cause attribution

Anthropogenic and lightning fires are **different**:

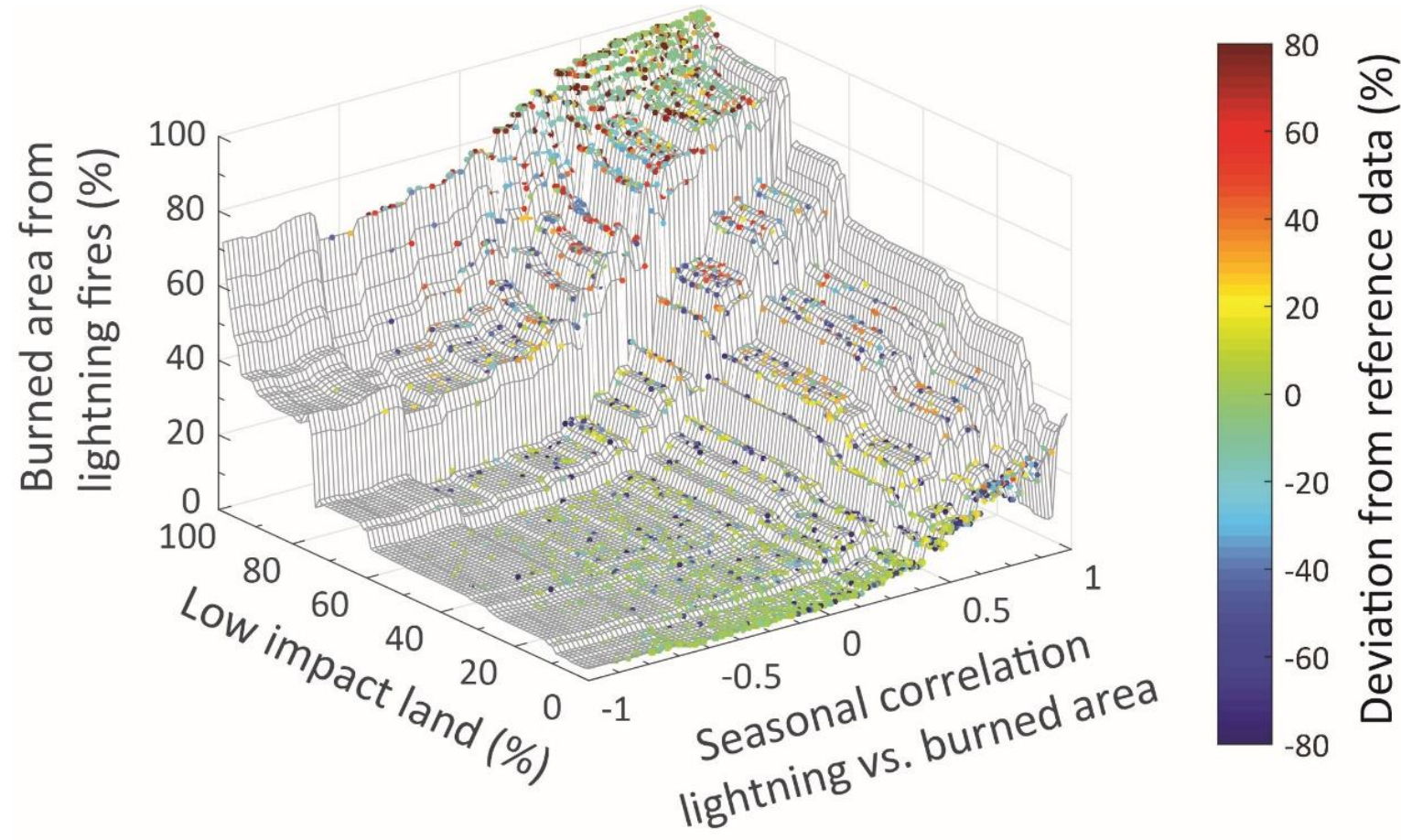
- Seasonal timing
- Parts of the landscape
- Fire behavior
- Socio-economic drivers
- Climatic drivers



CalVal with reference data from 7 world regions



Global fire cause attribution

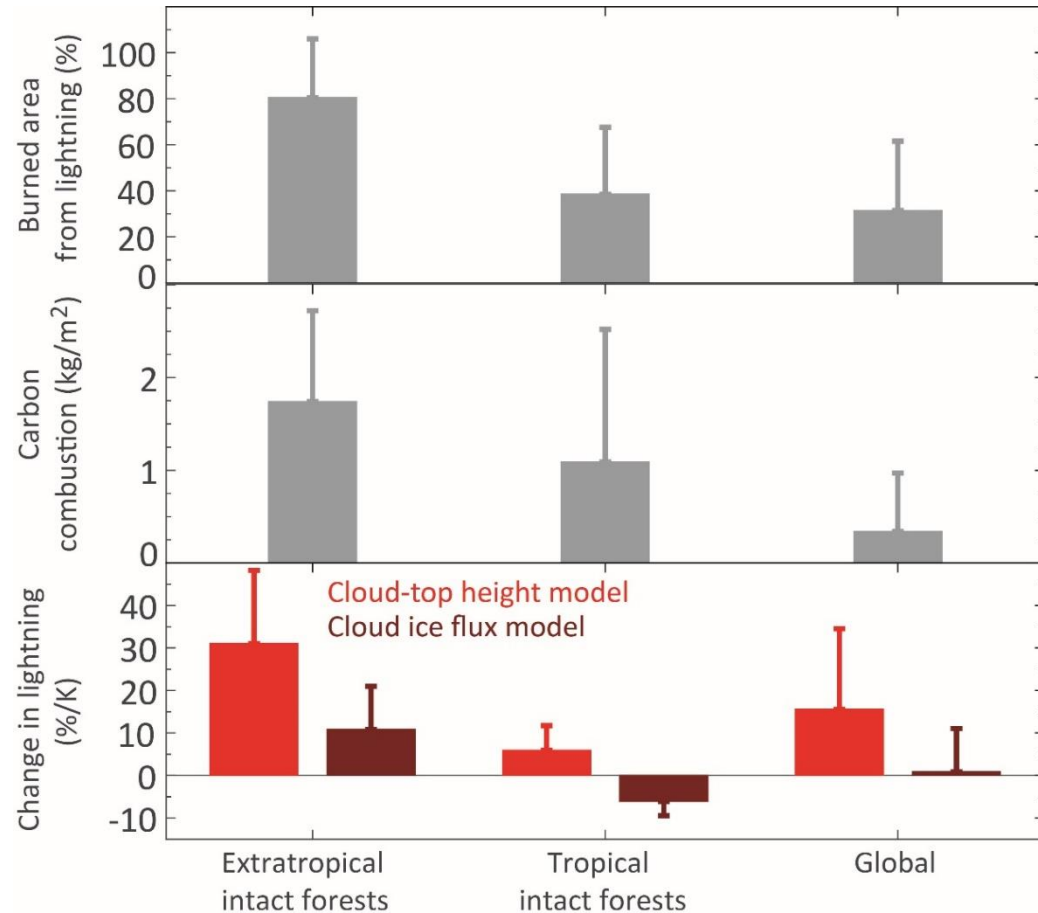


- Random forest model

- Explains 40-47 % of the spatial variability in fire cause



Global fire cause attribution

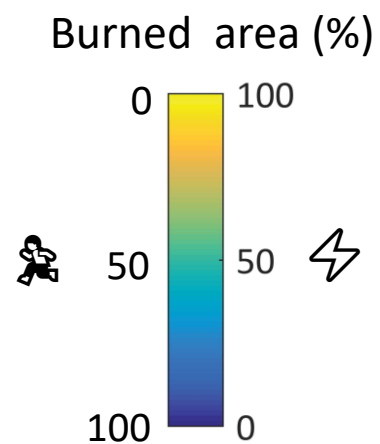
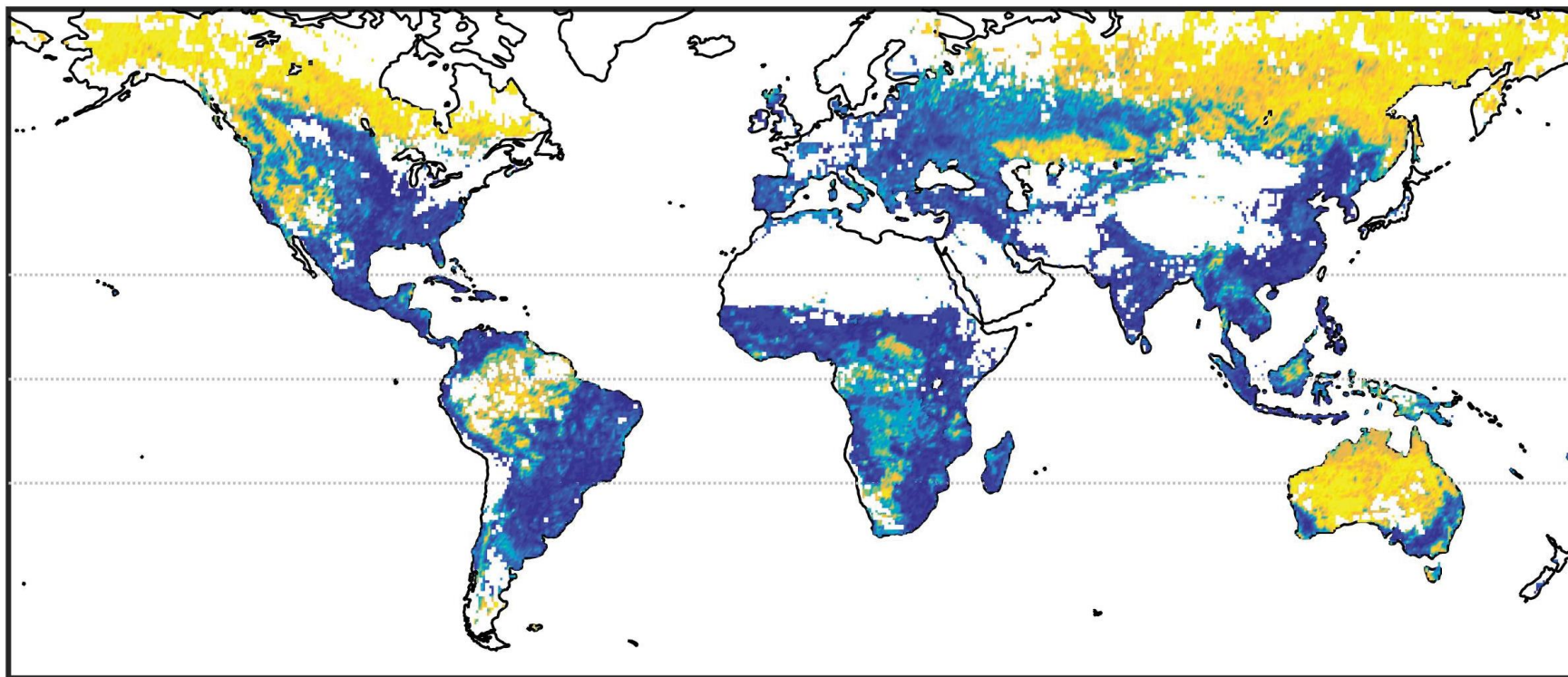


- Anthropogenic and lightning fires have different change trajectories
→ use in **fire models**

- Carbon-rich extratropical forests are increasingly at risk of lightning fires



Thanks!



Product will be released on Pangaea upon publication