

# Co-designing Global Water Watch for Anticipatory Action

Klein Holkenborg, E., Van den Homberg, M., Winsemius, H.,  
Donchyts, G., Morgan, A., Iceland, C., Hess, M., Saccoccia, L.,  
Baart, F., Suiker, R., Chertock, M.

23/05/2022

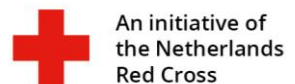
This presentation participates in OSPP



Outstanding Student & PhD  
candidate Presentation contest



**Deltares**





510

Deltares

TU Delft

# Global Water Watch

[www.globalwaterwatch.io](http://www.globalwaterwatch.io)

Deltares



WORLD  
RESOURCES  
INSTITUTE



Google.org

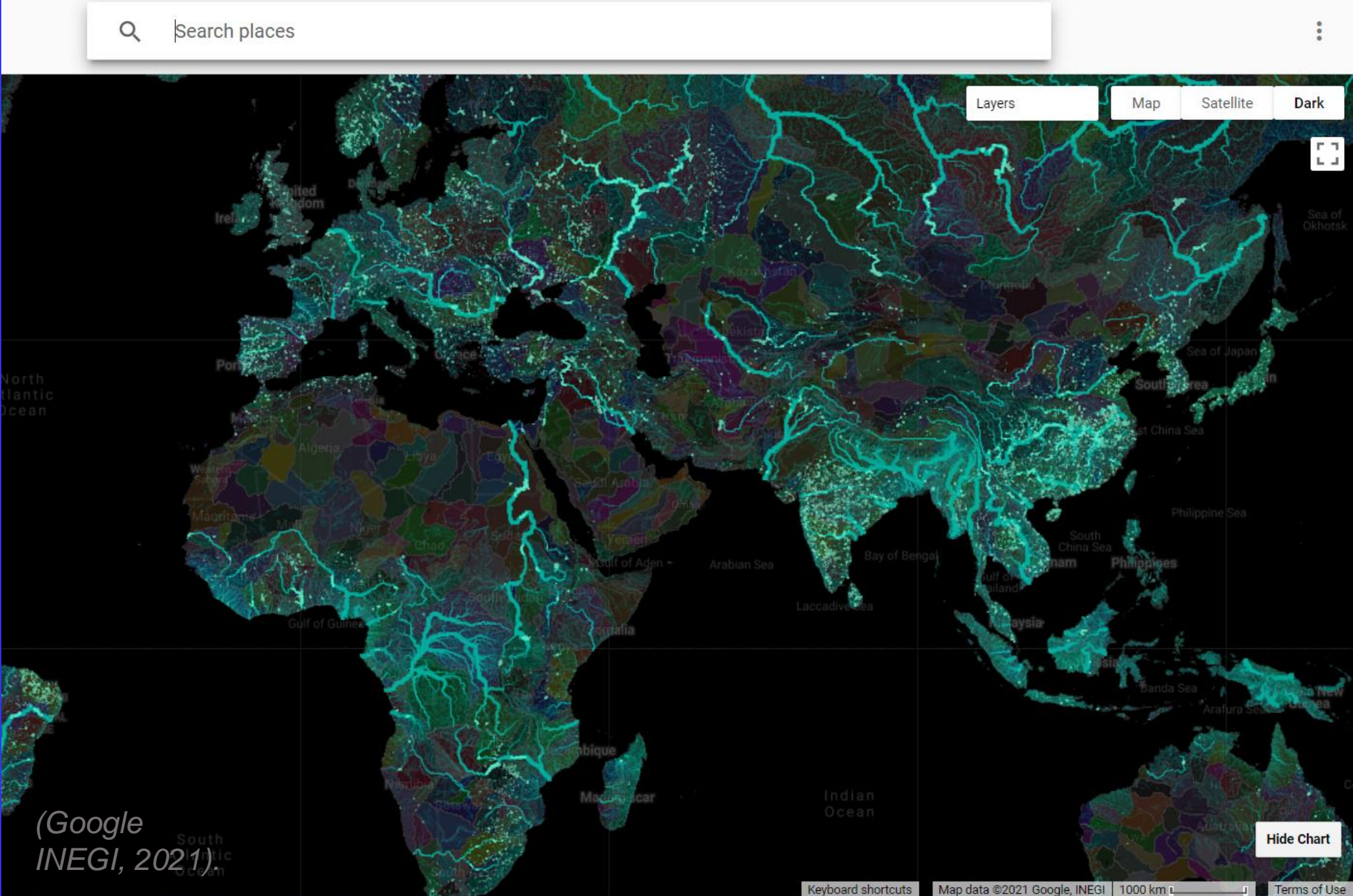




510

Deltares

TU Delft





510

Deltares

TU Delft



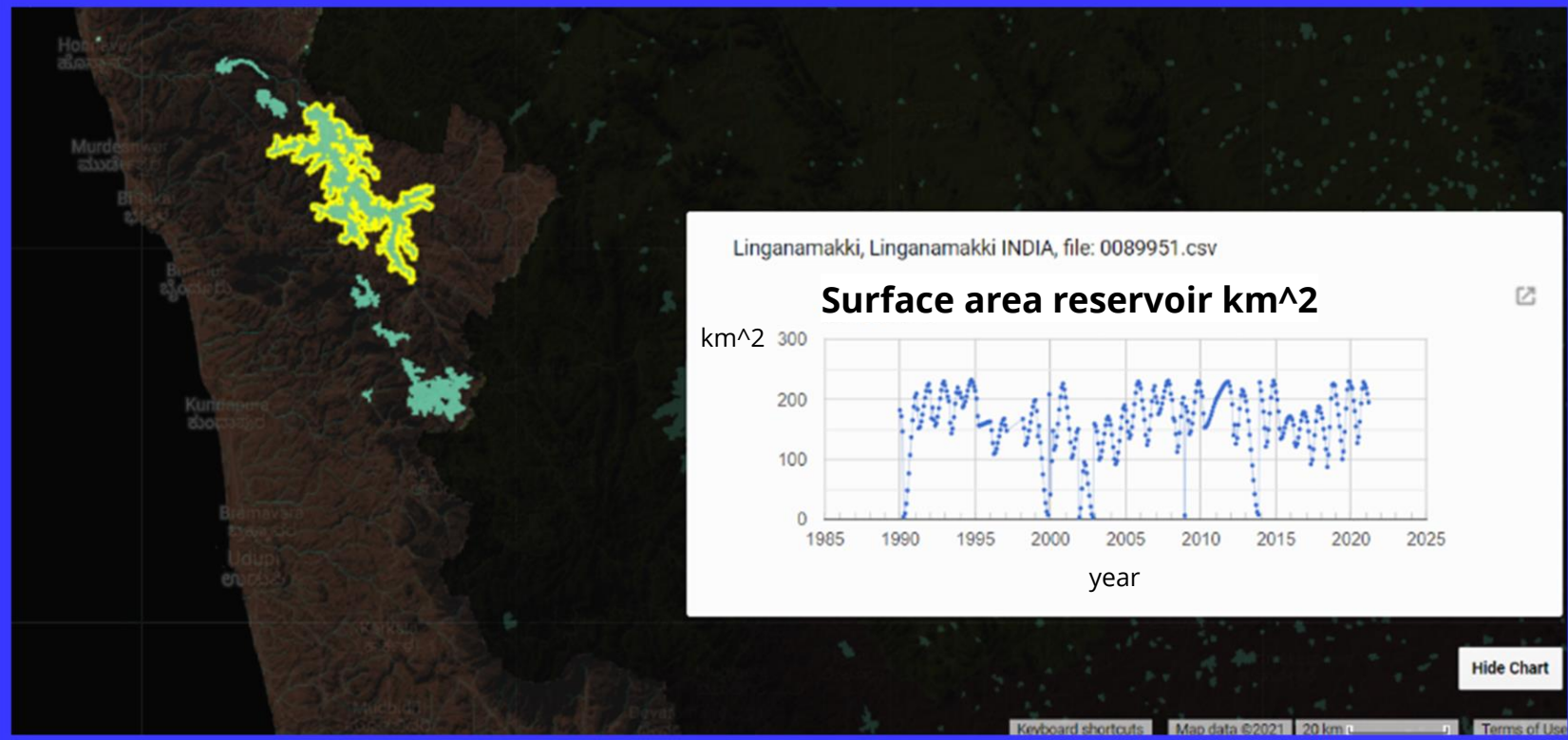
Search places

Layers

Map

Satellite

Dark



(Google  
INEGI, 2021)

Keyboard shortcuts

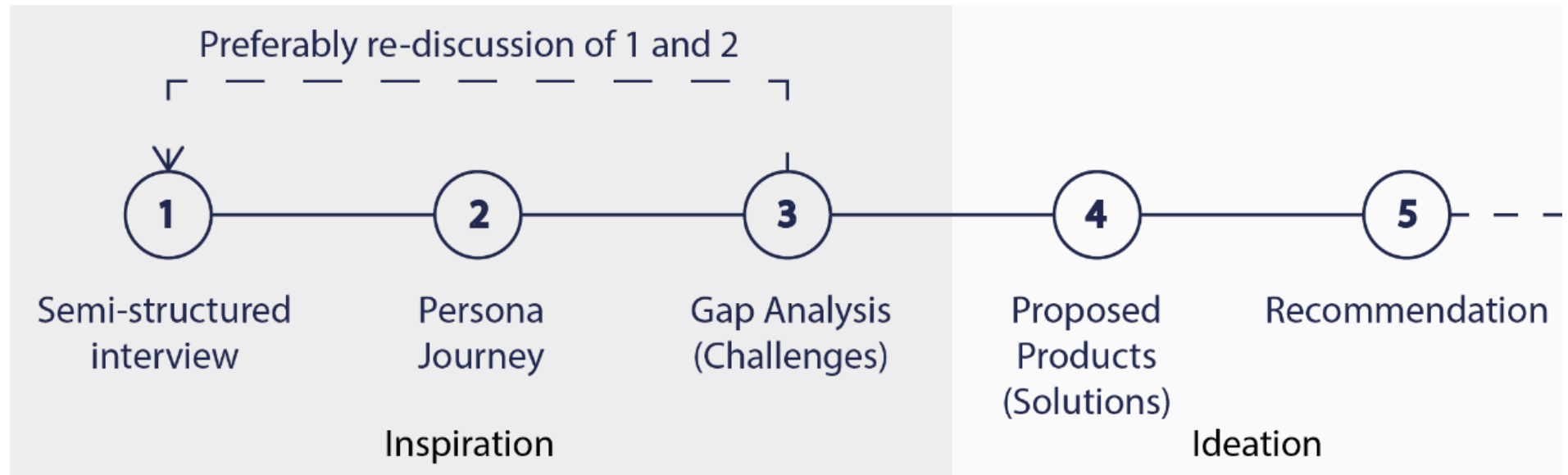
Map data ©2021 Google, INEGI

1000 km

Terms of Use

How can **Global Water Watch** improve  
**Anticipatory Action** in the Red Cross Red  
Crescent Movement?

# Human-Centered Design Method



## Case studies



Mozambique Red  
Cross Society (CVM)



Zimbabwe Red  
Cross Society (ZRCS)



Baphalali Eswatini  
Red Cross Society  
(BERCS)

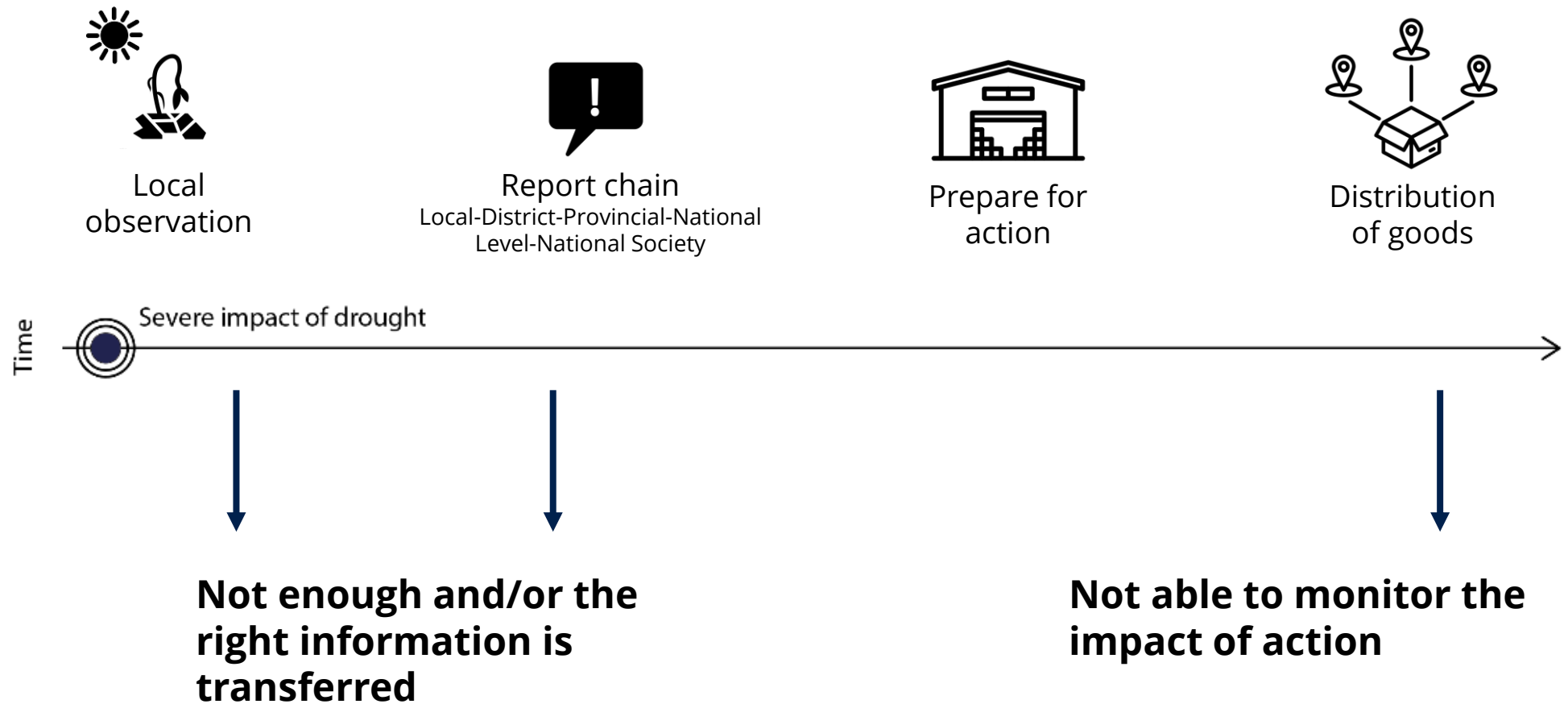
# Persona journey

**Responsive Action**

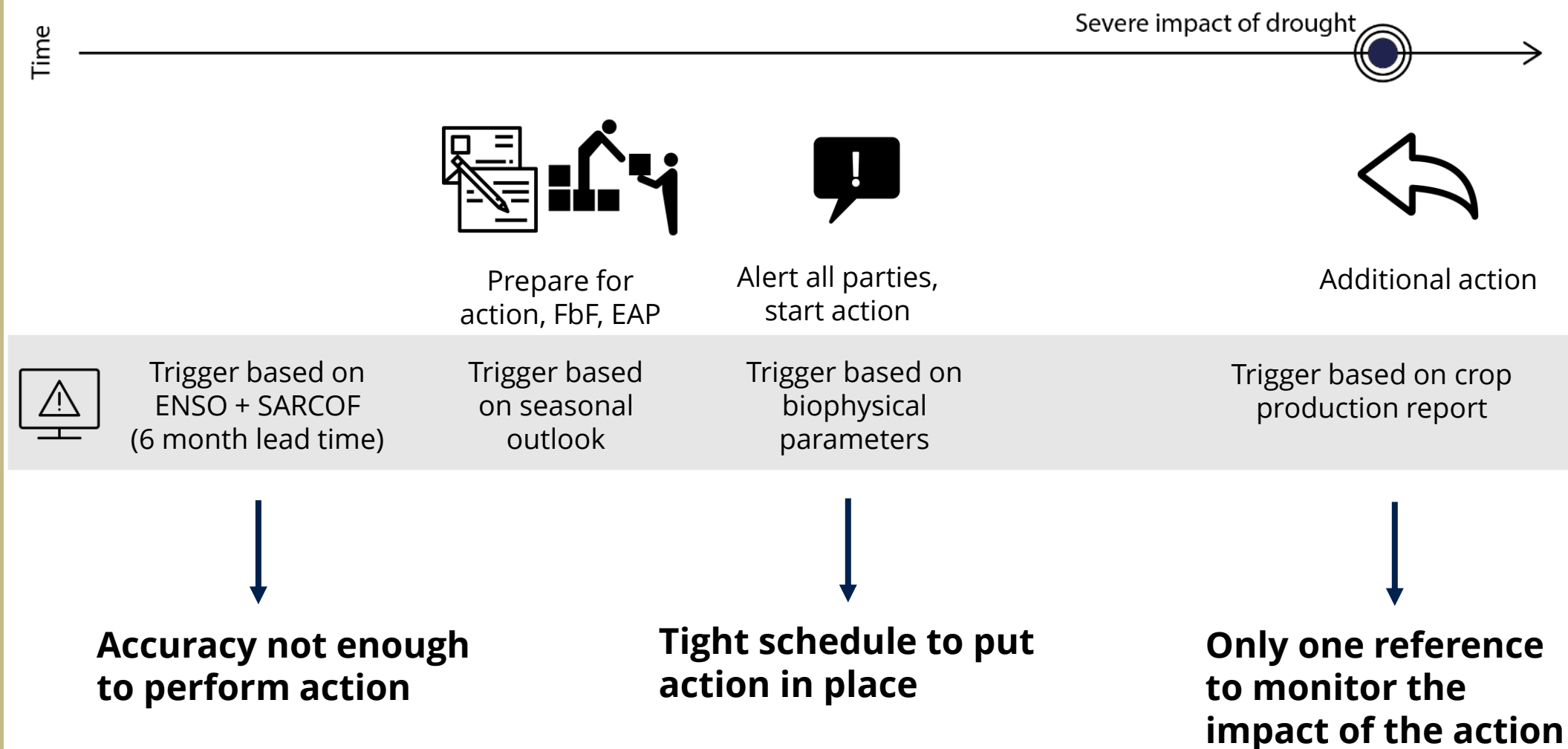
**Anticipatory Action**



## Persona journey in Responsive Action



# Persona journey in Anticipatory Action





# Proposed products

1. Monitor **surface water** in Near Real Time (high impact, low effort)
2. Monitor Water **volumes** in Near Real Time (high impact, high effort)
3. **Forecasting** water surfaces or volumes (high impact, high effort)
4. **Communication** support tools (low impact, low effort)

510

Deltares

TU Delft

Co-designing Global Water Watch for Anticipatory Action  
[www.globalwaterwatch.io](http://www.globalwaterwatch.io)

Thank you

This presentation participates in OSPP



Outstanding Student & PhD  
candidate Presentation contest



Emie Klein Holkenborg  
Student MSc. Water Management  
Delft University of Technology  
[emiekleinholkenborg@live.nl](mailto:emiekleinholkenborg@live.nl)