



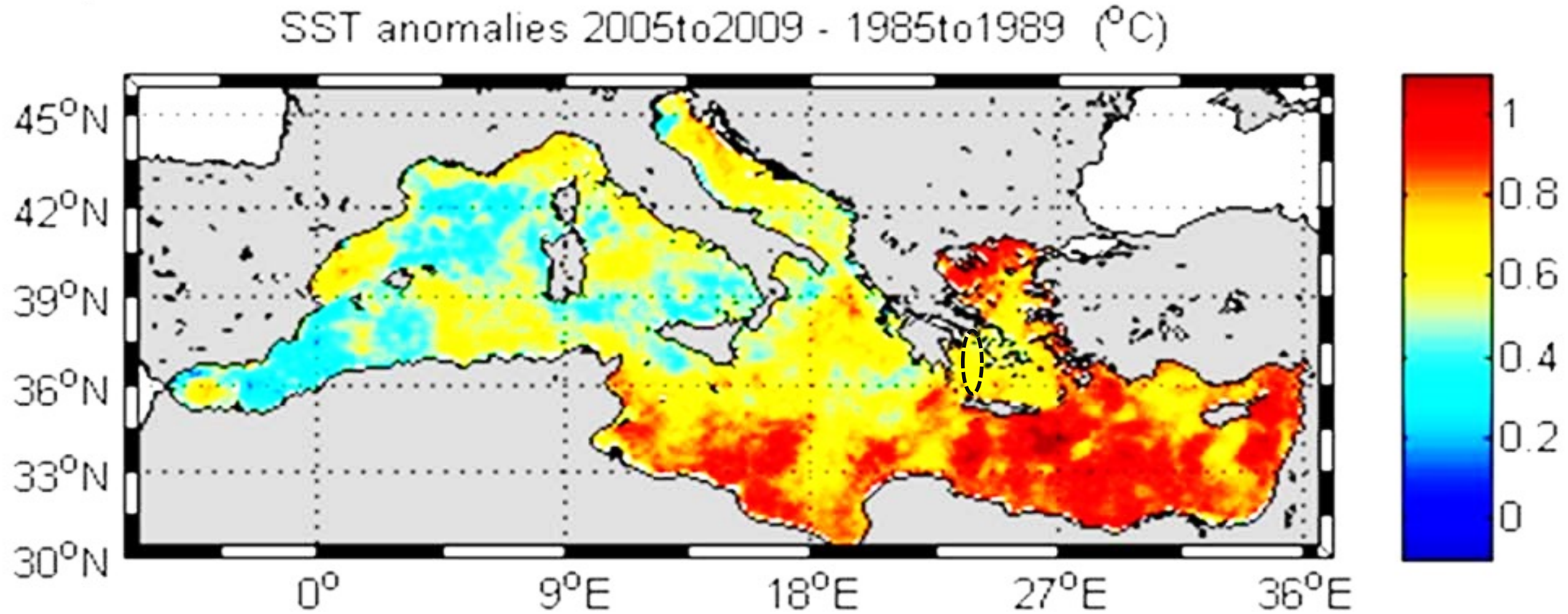
Foram-substrate interactions

What does their future hold?

Presented by Sneha Manda



Coastal ecosystems are at high risk

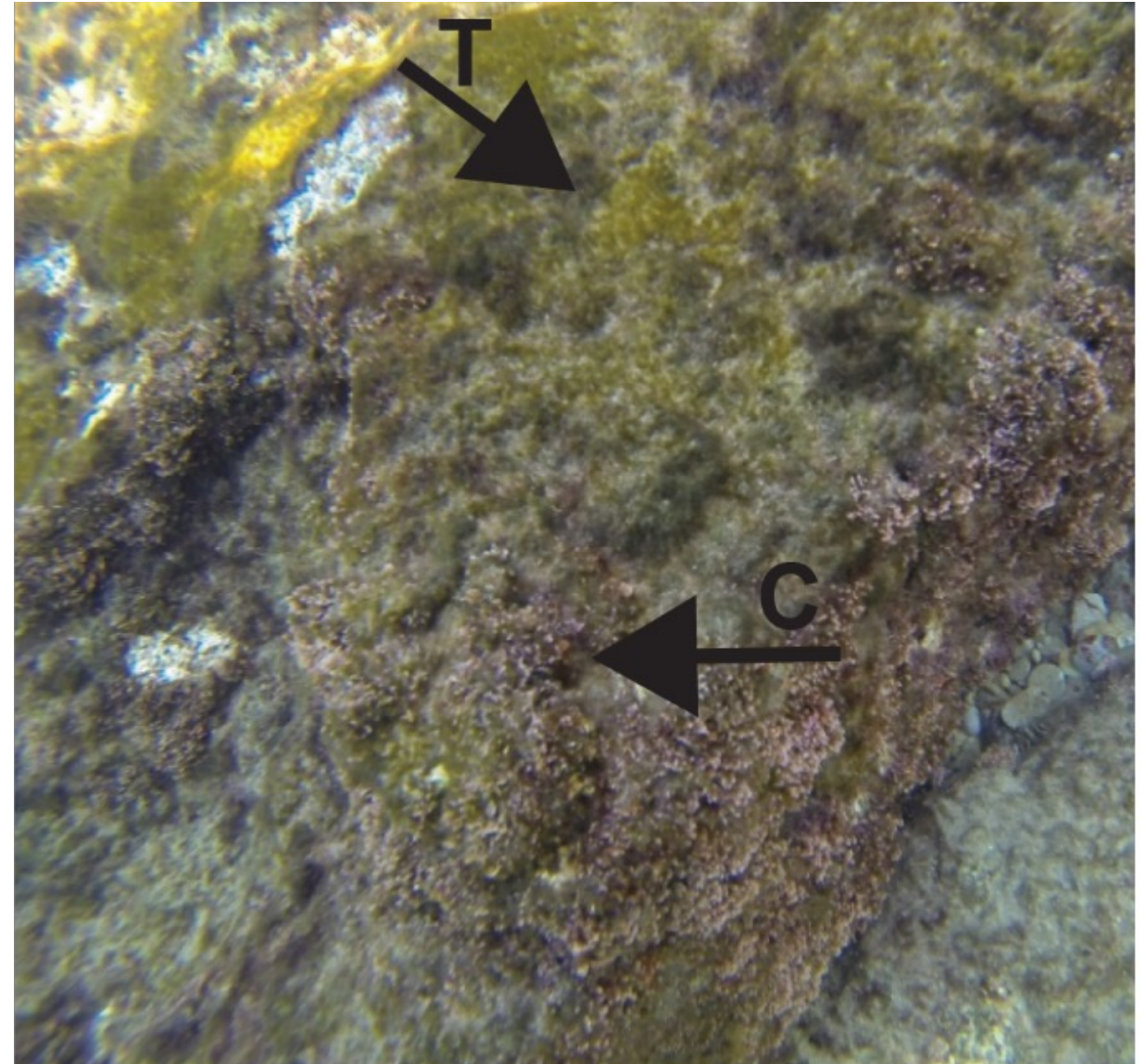


Macias et al., 2013

Macroalgal habitats on abrasional platforms



The effect of algal habitat thermal sensitivity on foraminifera



How will the foraminifera respond when their homes are at risks to global warming?

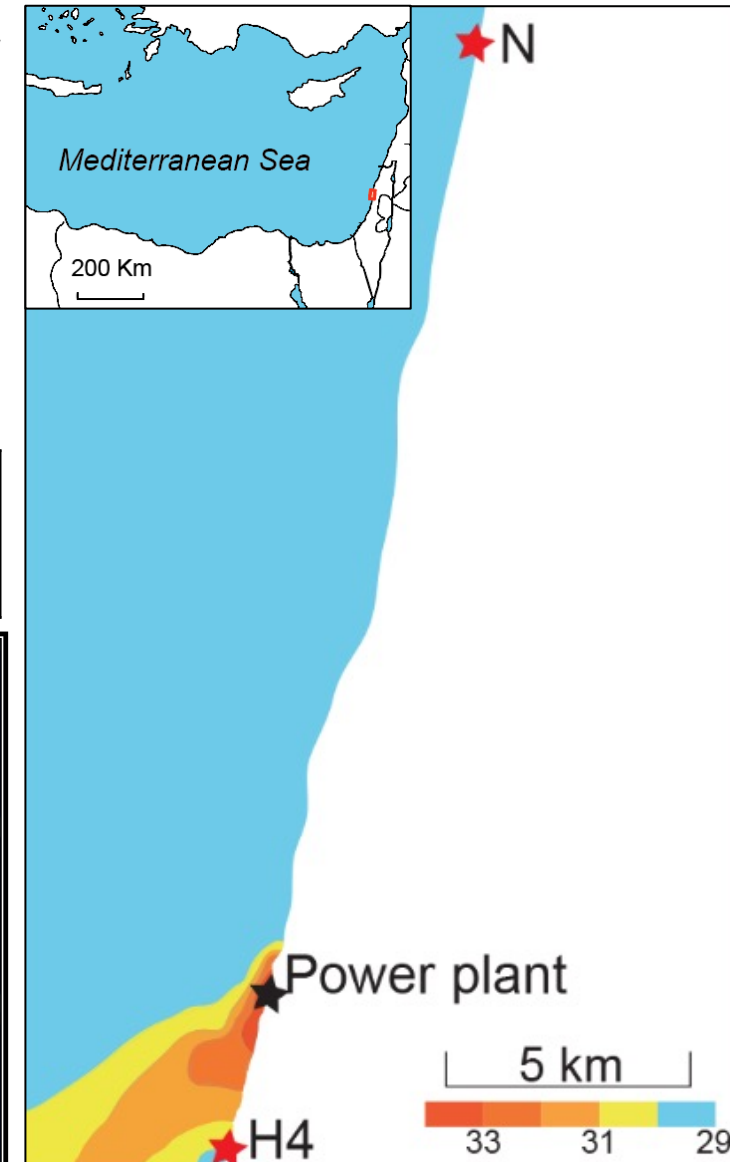
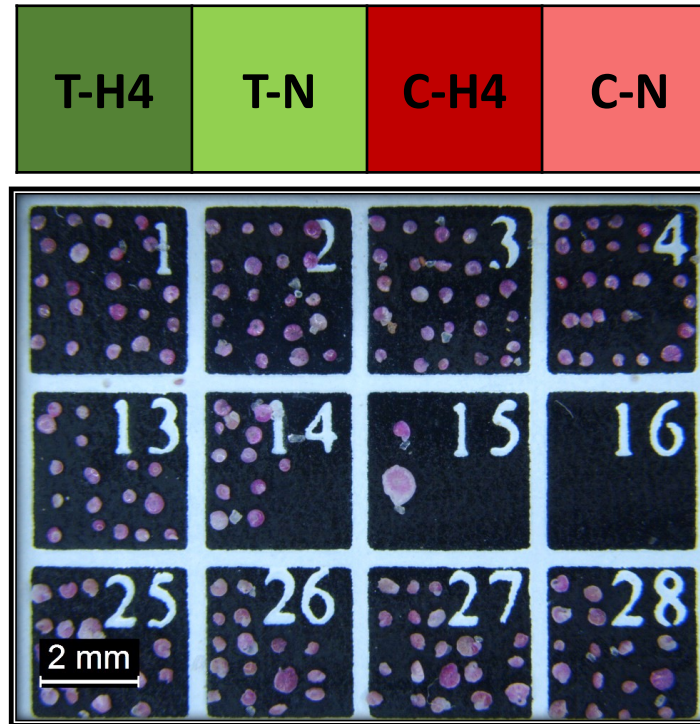


Methodology

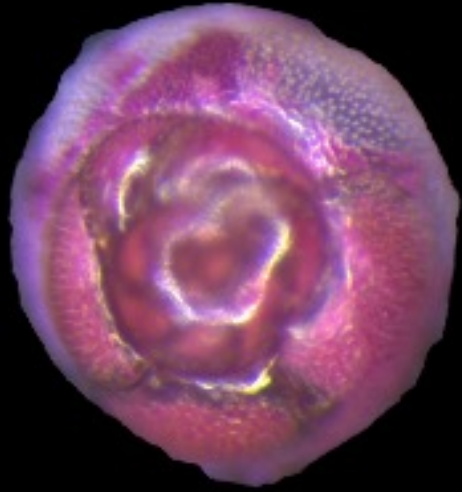
One-year long , monthly sampling campaigns from stations **N**(natural) and **H4**(thermally polluted)

0 to 0.5m depth, scalpel or hand, depending on the degree of attachment of algae

Rose Bengal staining to identify living foraminifera following the FOBIMO protocol



Common species



Rosalina



P. calcariformata



A. lobiifera



S. orbiculus



Lachlanella



Textularia

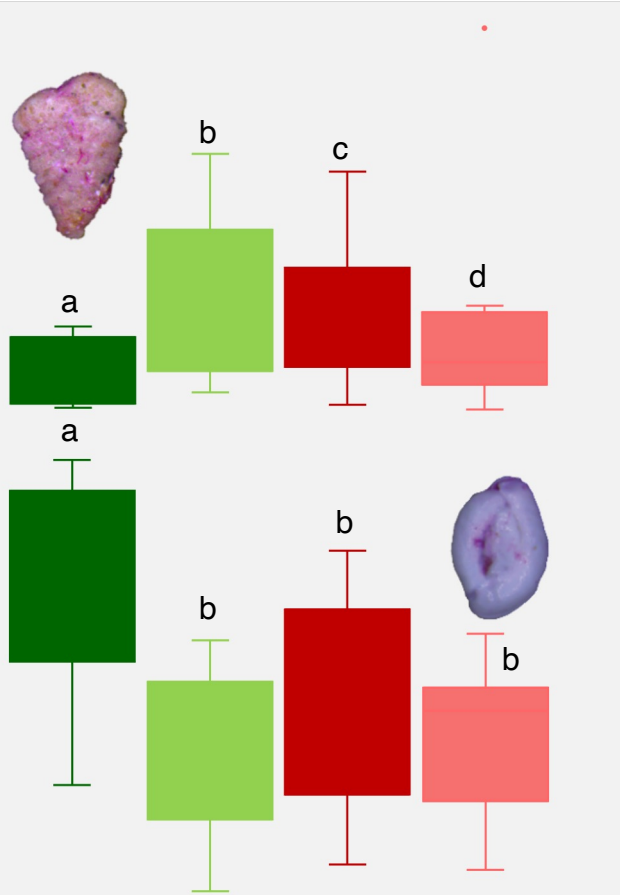


Peneroplis

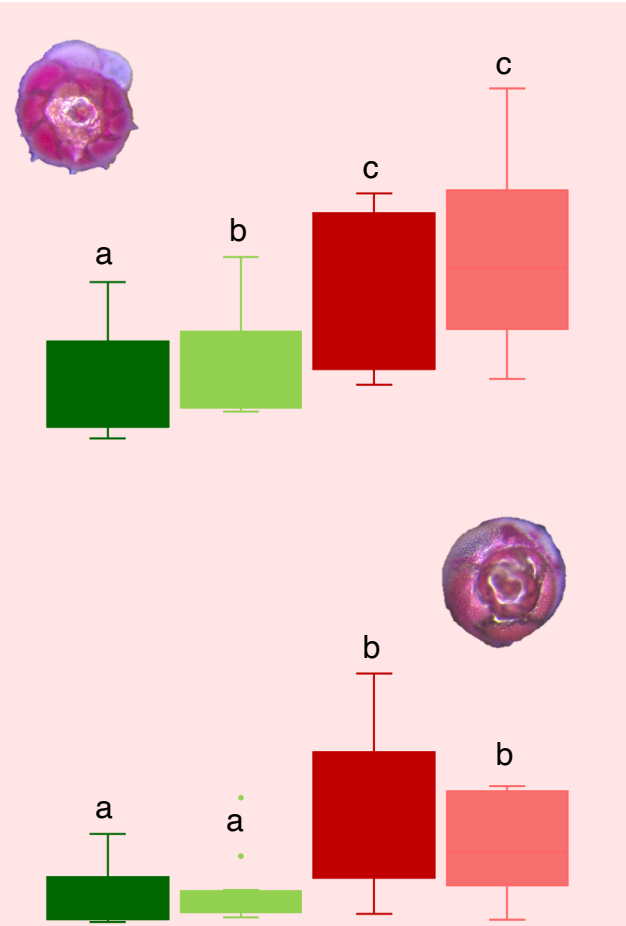
Algae-foraminifera affiliation

Common foraminifera species can be categorized into three groups based on their affiliation for Turf or Coralline algae

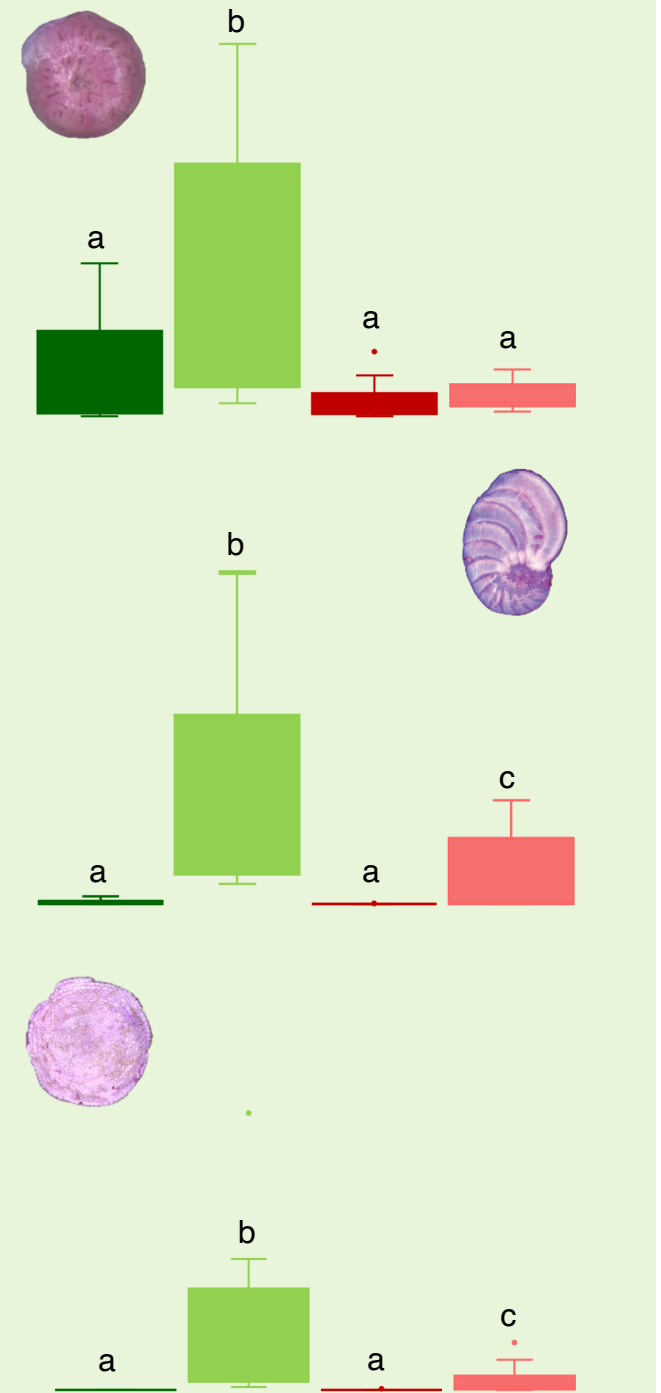
No affiliation



Coralline algae

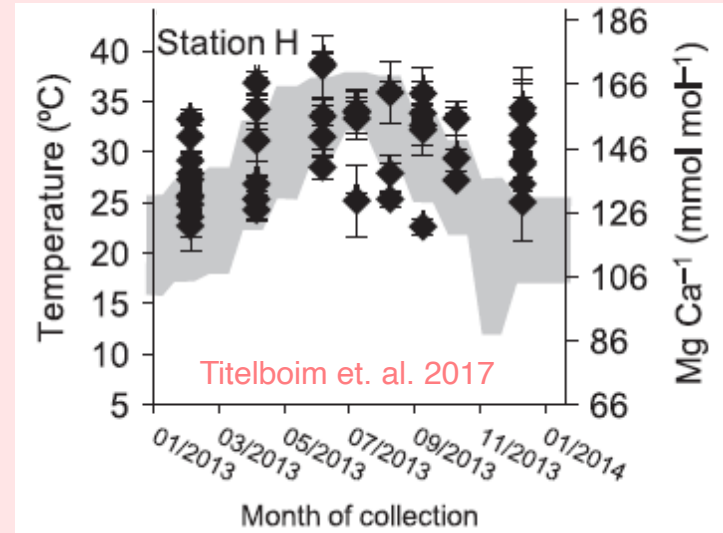
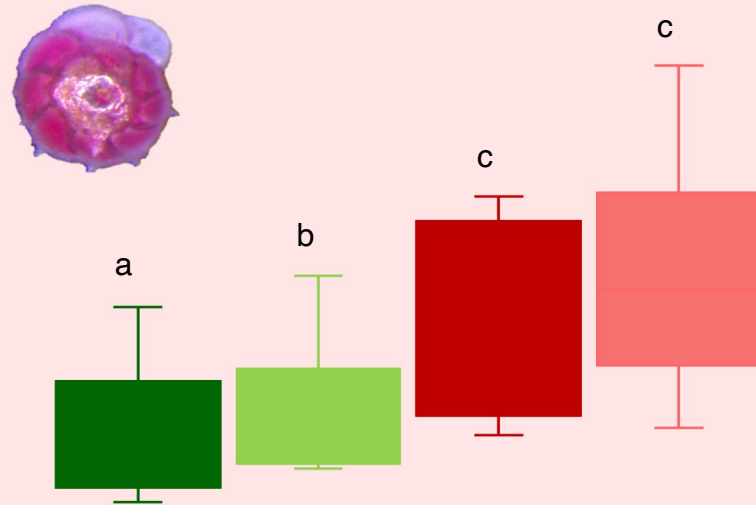


Turf algae

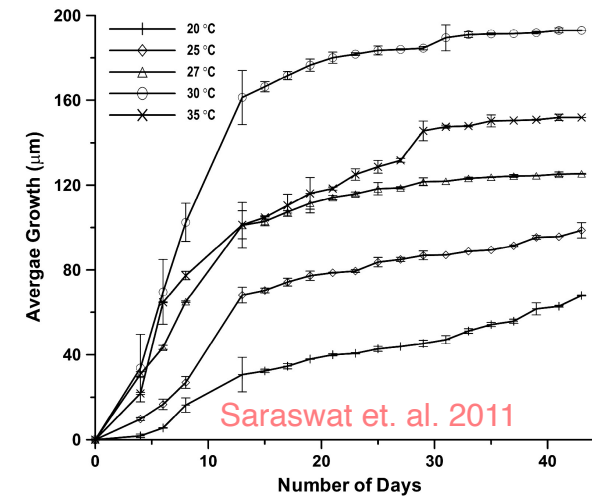
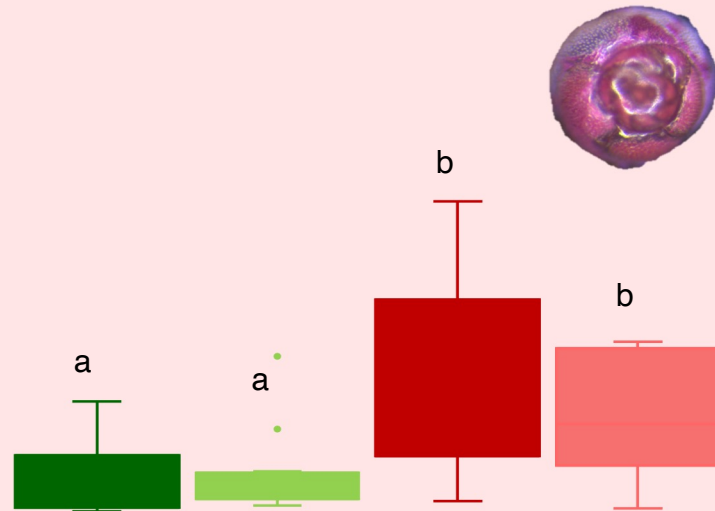


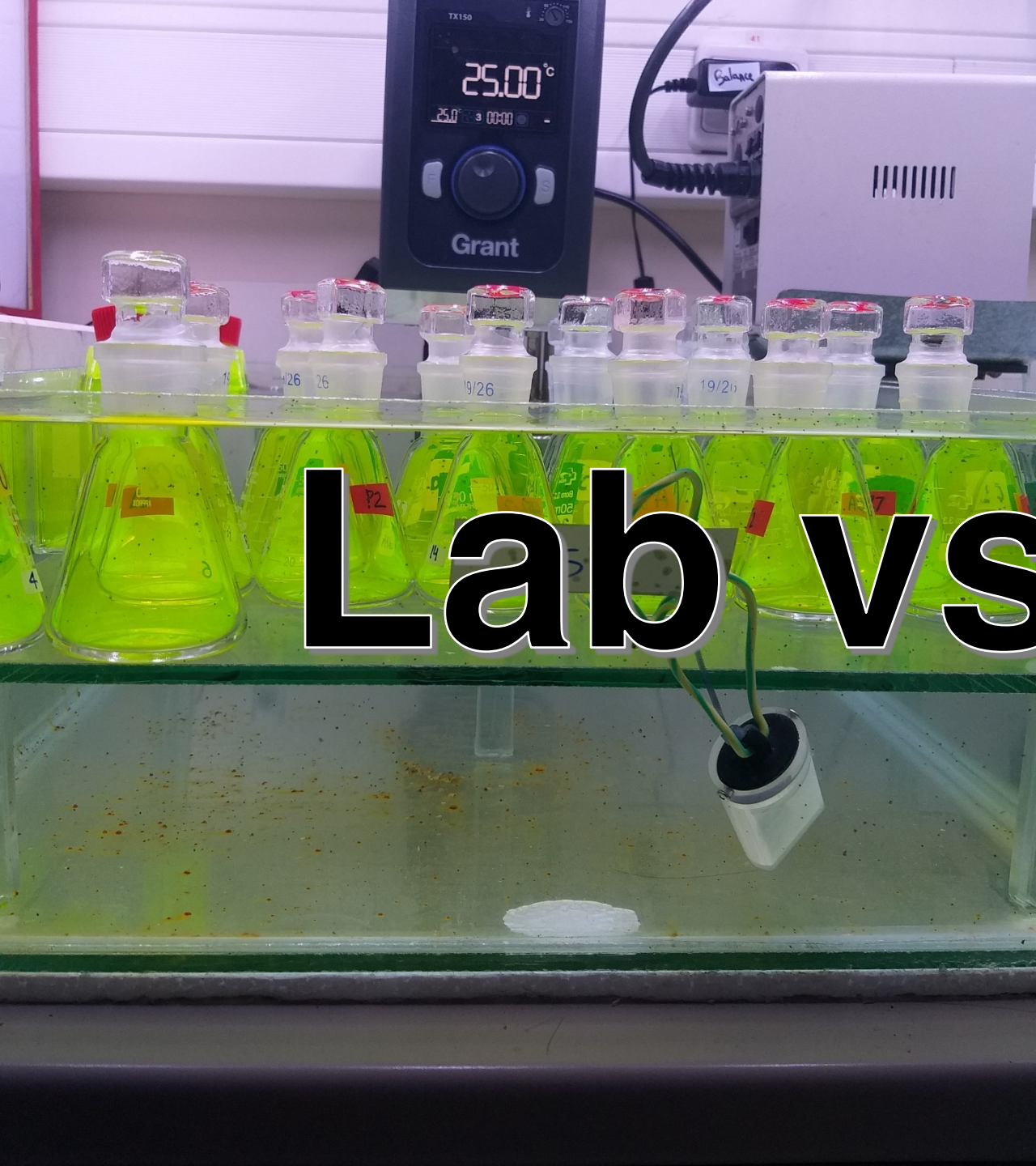
Foram-algae dependence causes limitations

P. calcariformata



Rosalina





Lab vs



Field



Check out our article!

This presentation participates in OSPP



**Outstanding Student & PhD
candidate Presentation contest**