



# Dominance of Pacific Sourced Deep Water in the Atlantic sector of the Southern Ocean during the last glacials

M. Hallmaier, E. M. Rückert, J. M. Link, L. Lütkes, N. Frank

Contact: [eva.rueckert@iup.uni-heidelberg.de](mailto:eva.rueckert@iup.uni-heidelberg.de)

Institute of Environmental Physics, Heidelberg University, Physics of Environmental Archives, Heidelberg, Germany



INSTITUTE OF  
ENVIRONMENTAL PHYSICS



UNIVERSITÄT  
HEIDELBERG  
ZUKUNFT  
SEIT 1386

Funded by  
**DFG** Deutsche  
Forschungsgemeinschaft  
German Research Foundation



**IODP**  
INTERNATIONAL OCEAN  
DISCOVERY PROGRAM



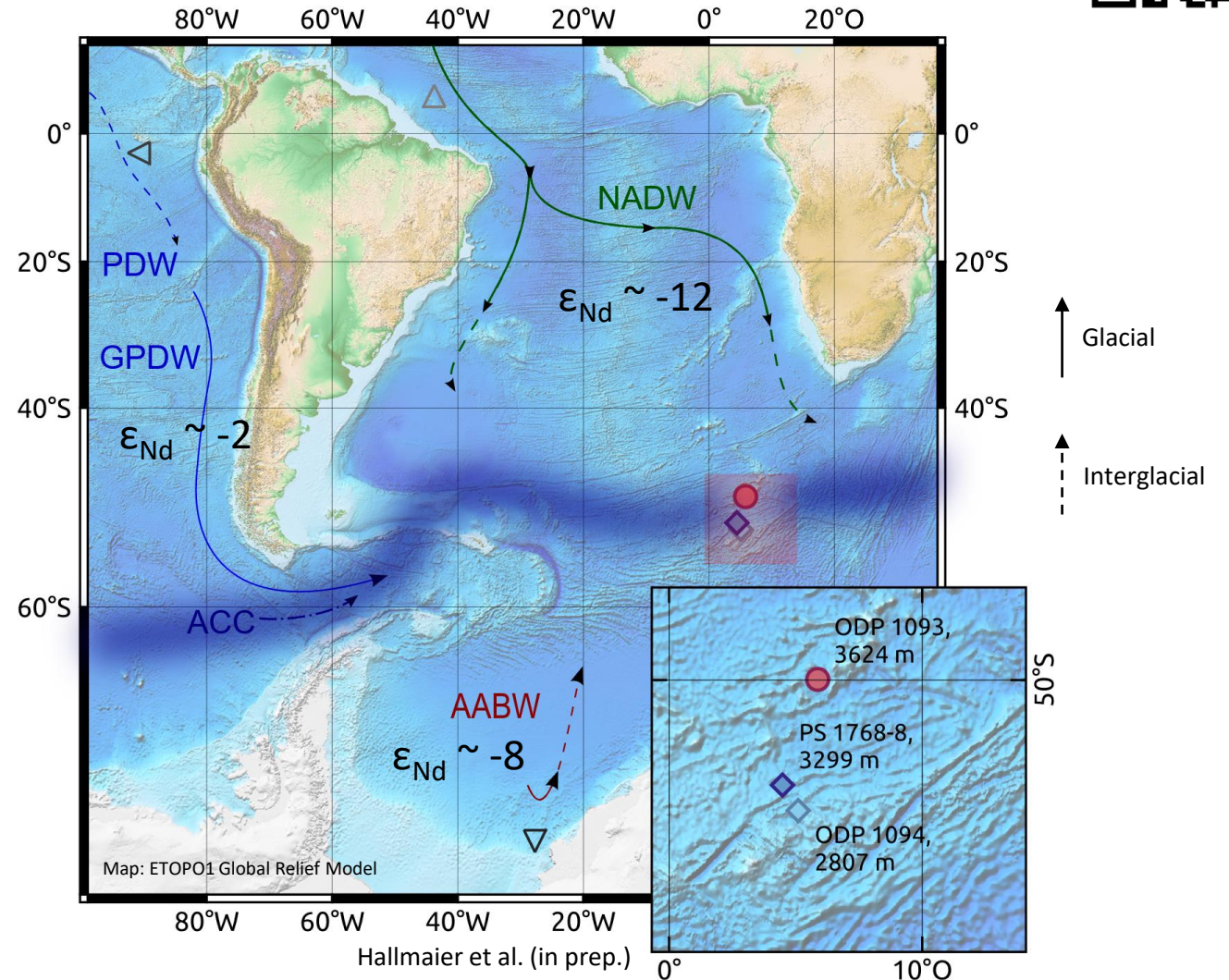


# Atlantic Southern Ocean circulations



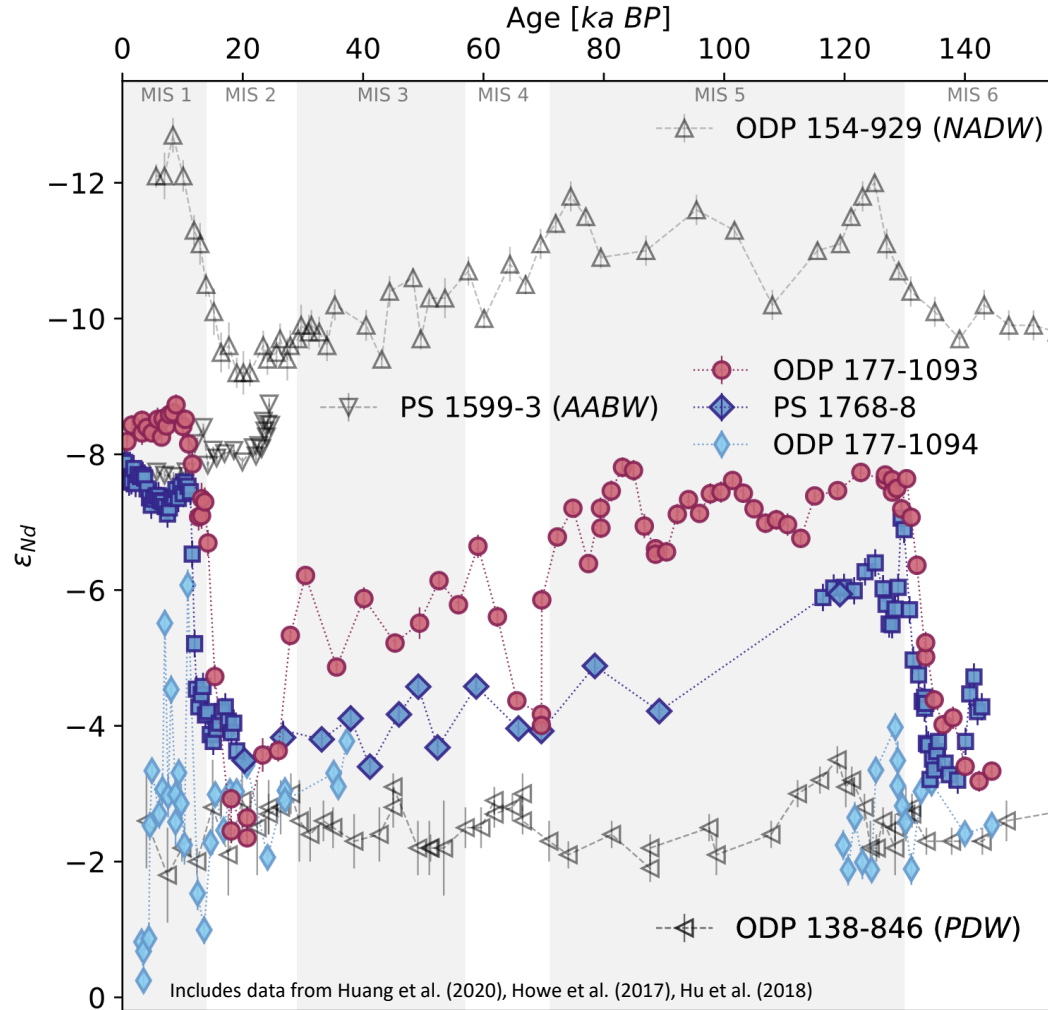
ICP-MS  
measurement

$$\epsilon_{\text{Nd}} = \left[ \frac{{}^{143}\text{Nd}/{}^{144}\text{Nd}_{\text{sample}}}{{}^{143}\text{Nd}/{}^{144}\text{Nd}_{\text{CHUR}}} - 1 \right] \cdot 10^4$$

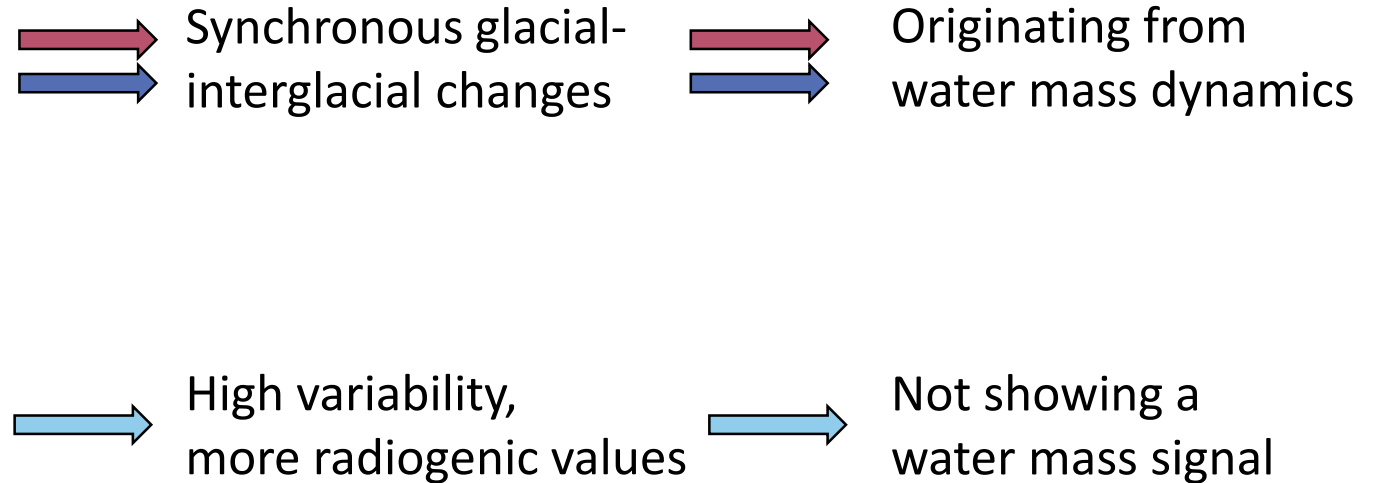




# $\epsilon_{Nd}$ signature and its implications

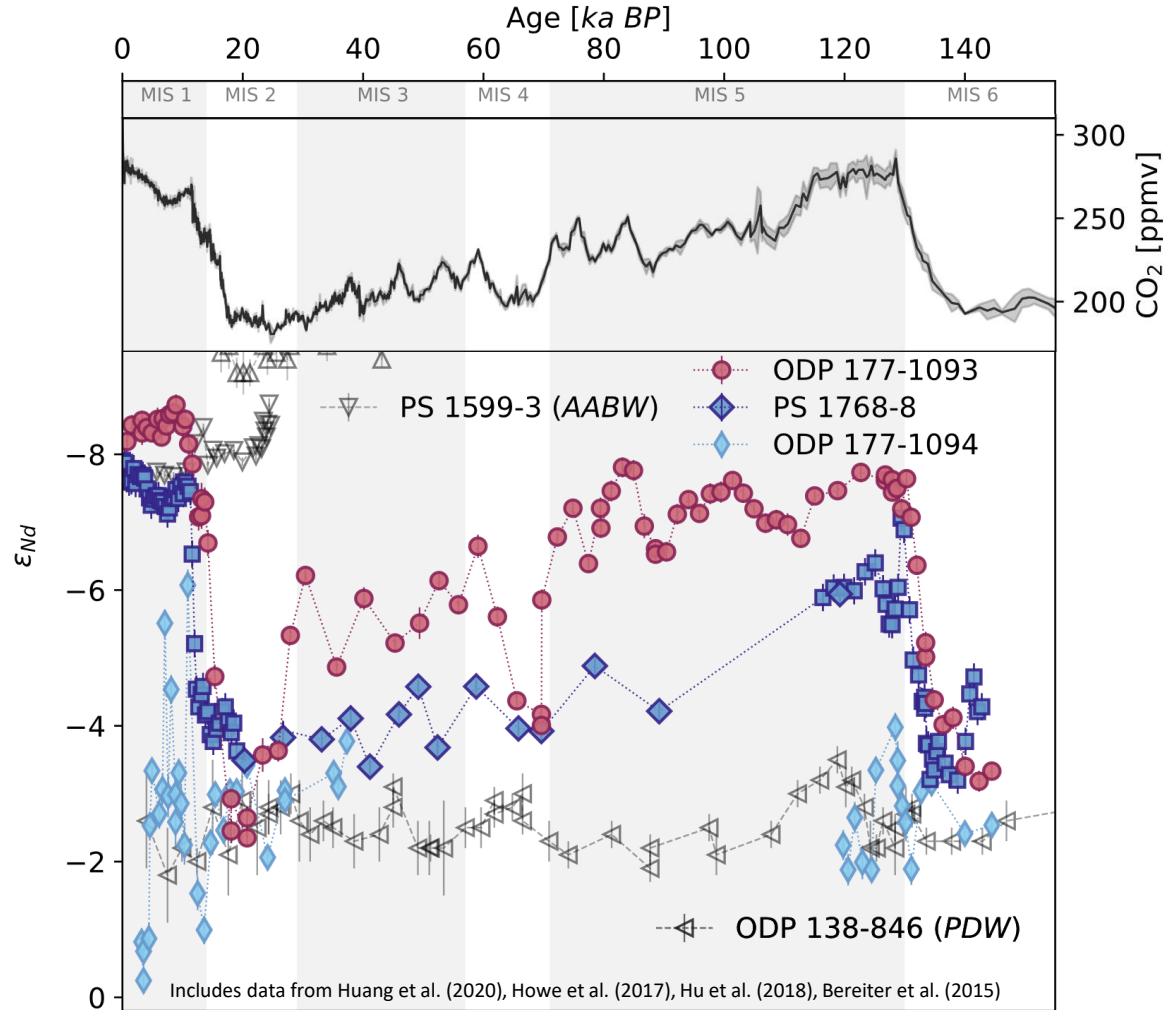


Hallmaier et al. (in prep.)





# $\epsilon_{Nd}$ signature and its implications



Hallmaier et al. (in prep.)

Interglacial

Glacial

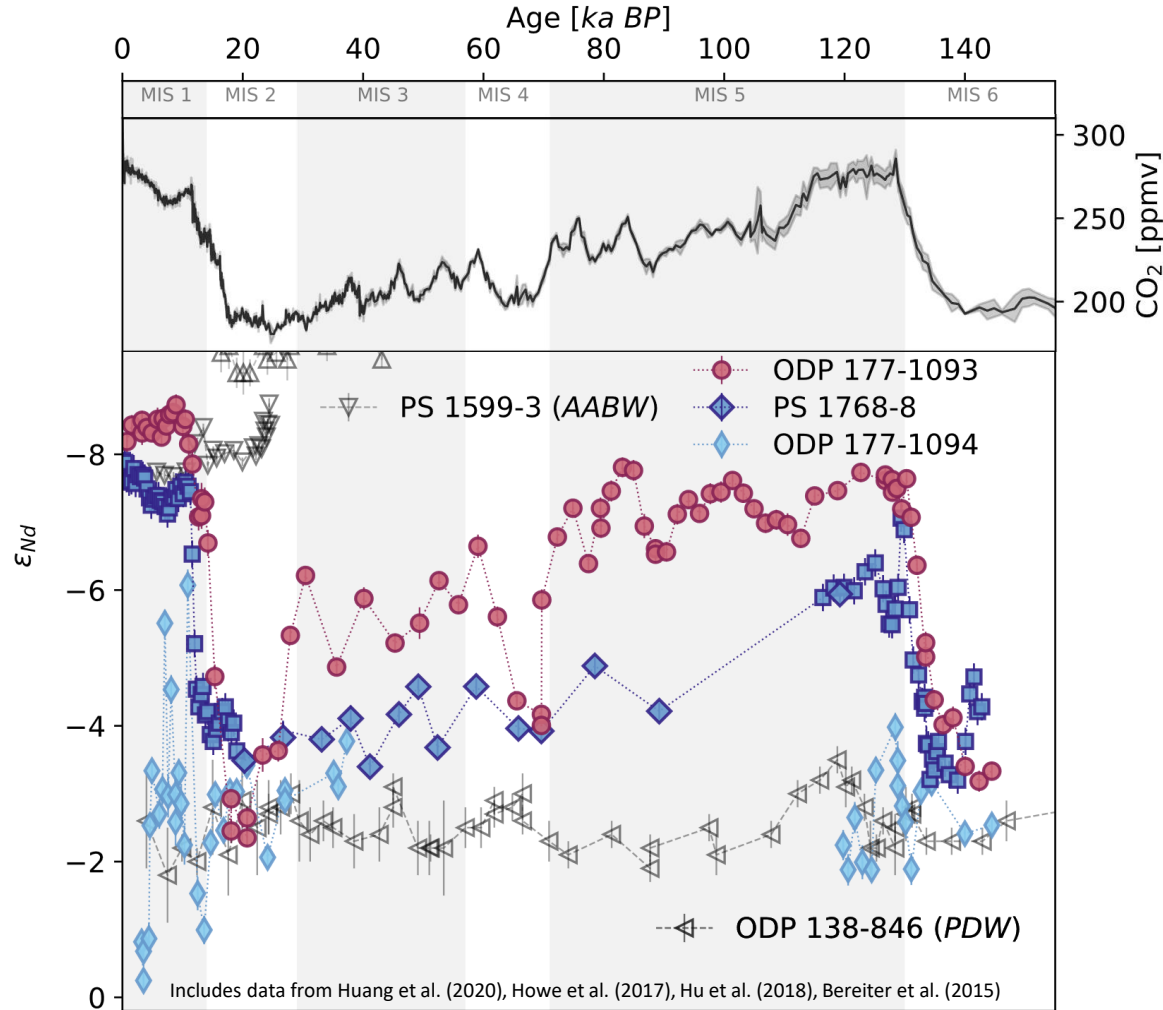
PDW  
contribution

Atmospheric  
carbon

Ocean carbon  
storage



# $\epsilon_{Nd}$ signature and its implications



Hallmaier et al. (in prep.)

Interglacial

Glacial

