

Faculty 14: Civil and Environmental Engineering

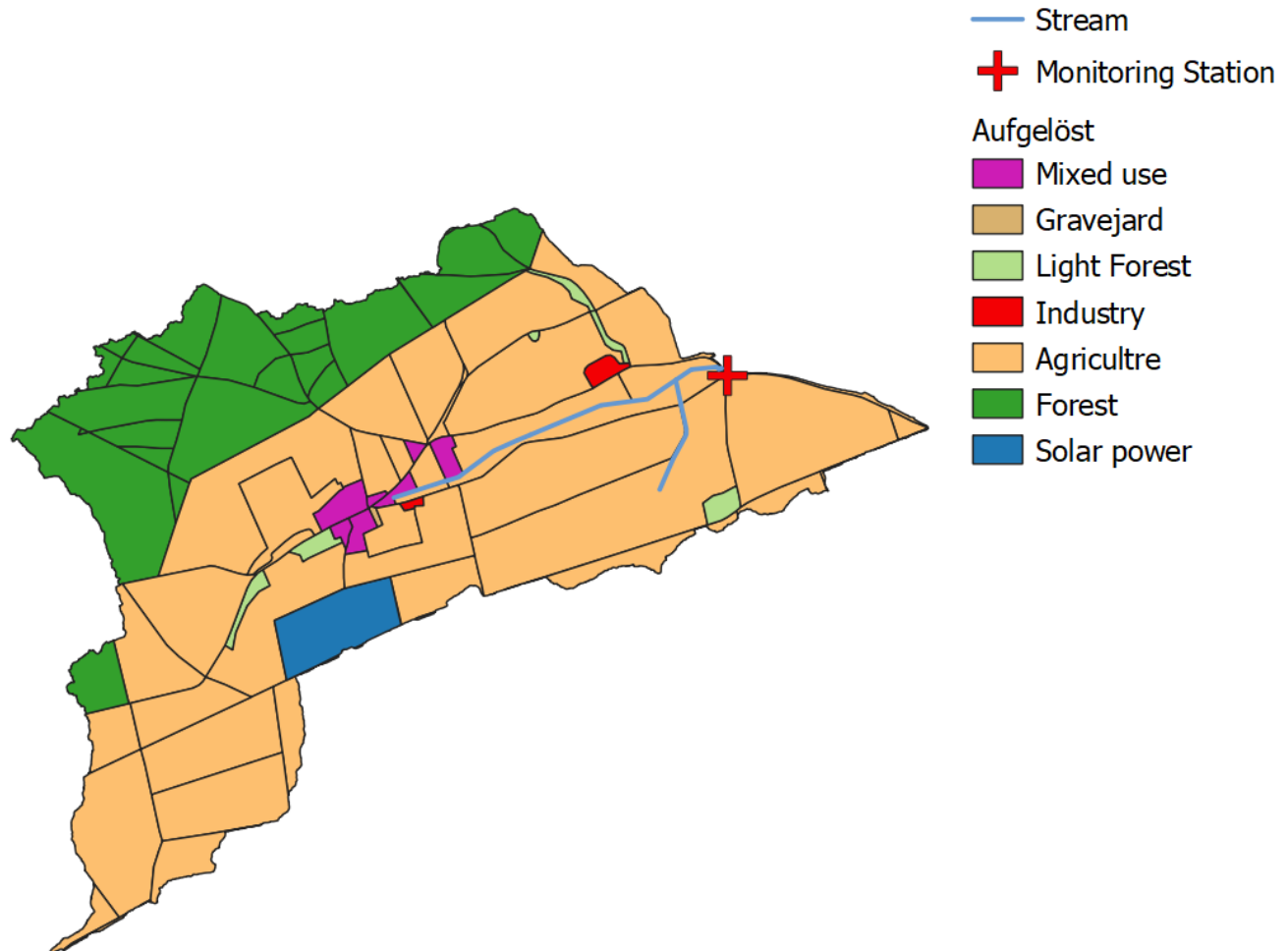
Department: Hydrology and Substance Balance.

Nitrate flux monitoring in small headwater catchments in the German low mountain range – Threshold exceedance during baseflow and snowmelt.

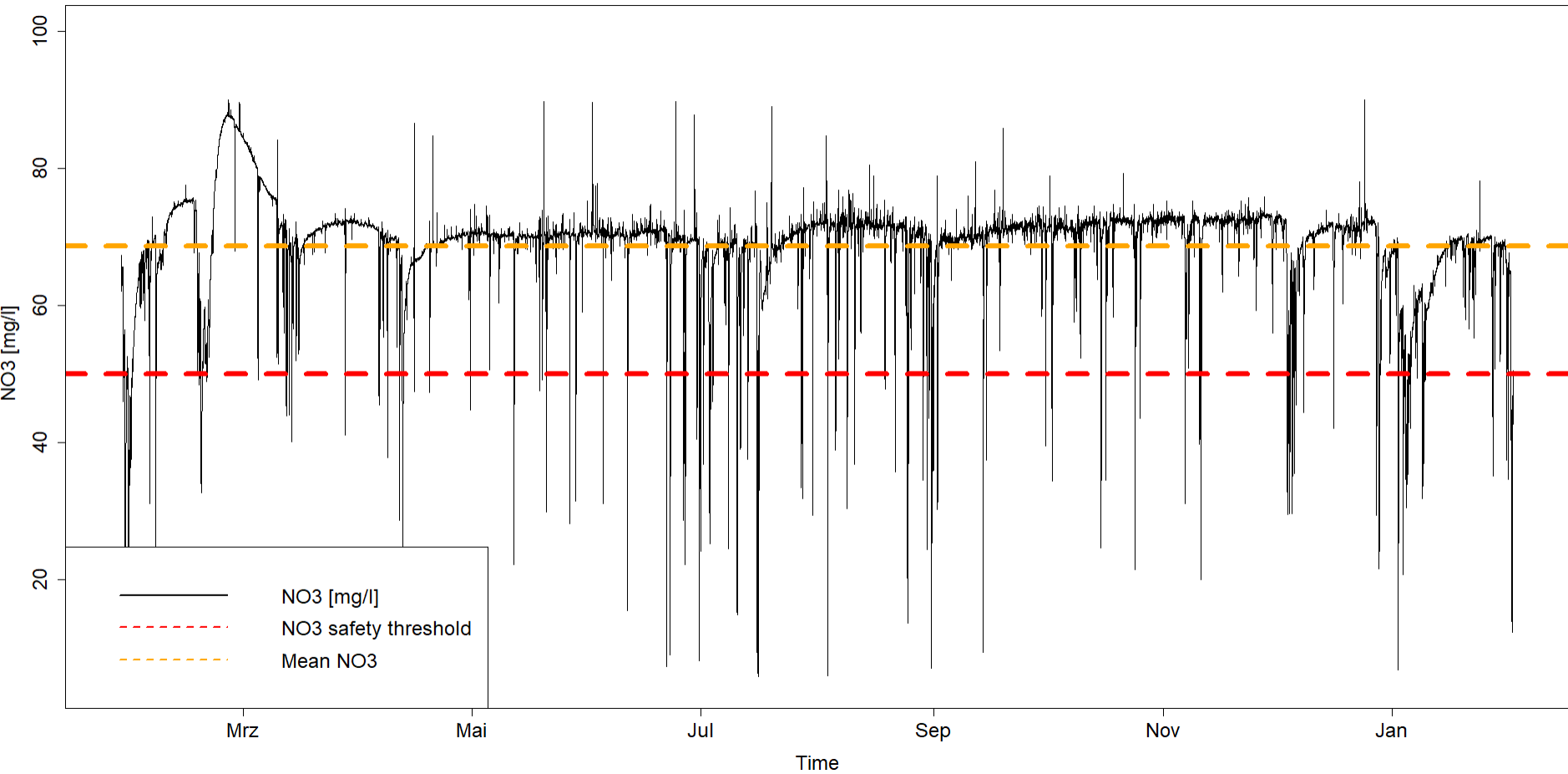
Lukas Ditzel, Caroline Spill, Matthias Gaßmann



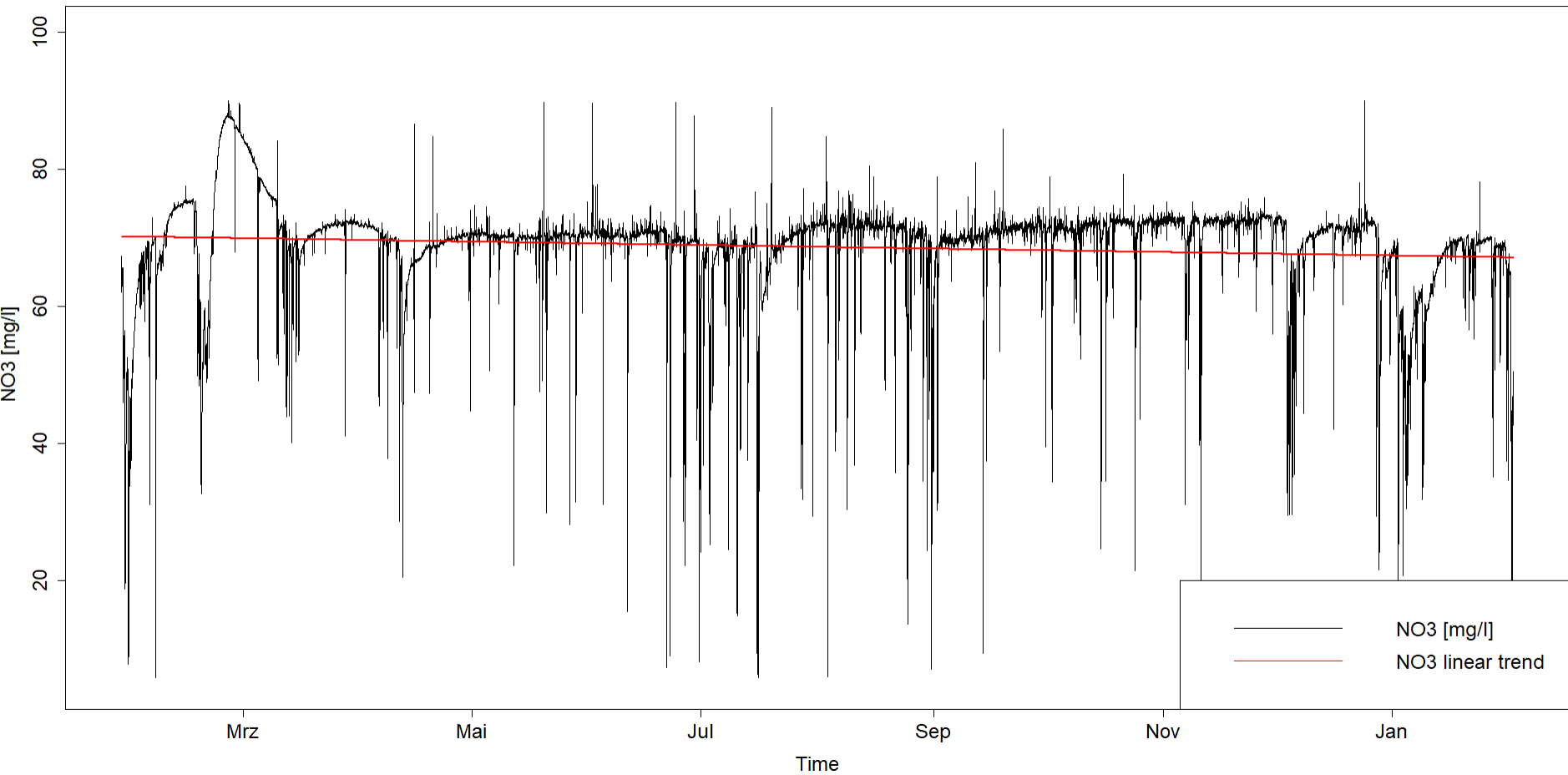
Study site – Nesselbach



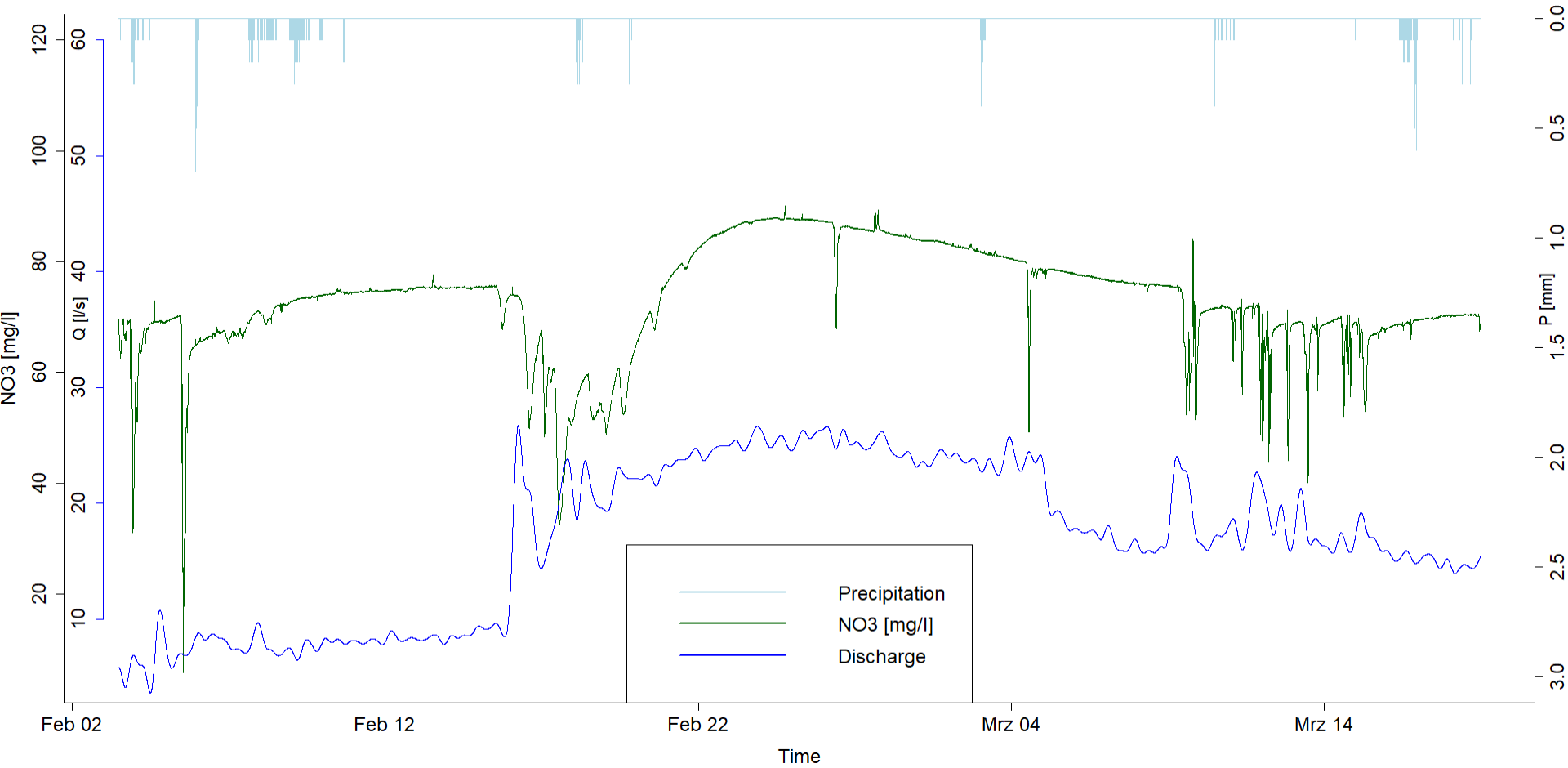
Annual Timeseries of Nitrat Concentration



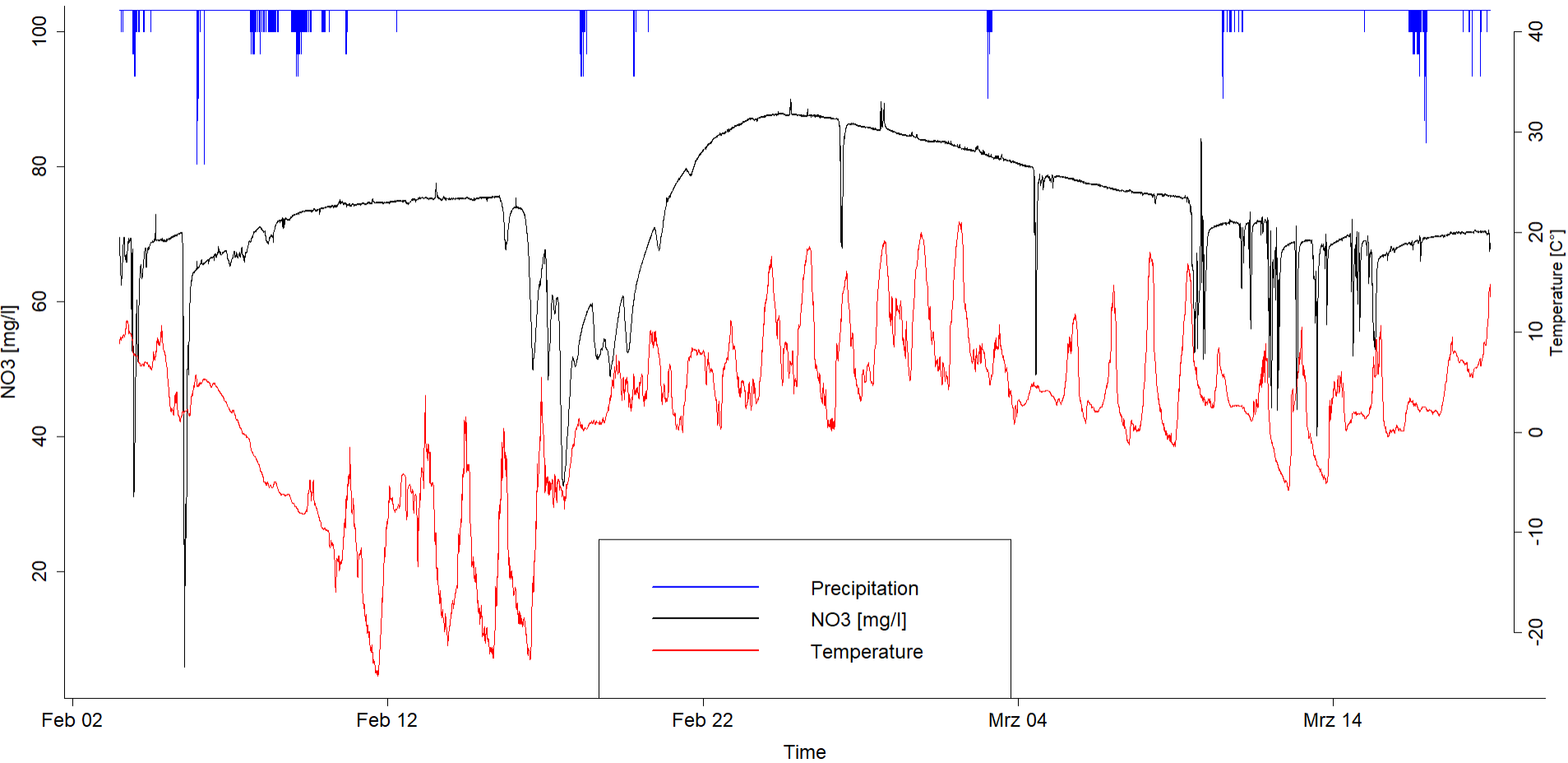
NO₃ long term trend



Snowmelt in February 2021



Snowmelt in February 2021



Daily Variation of NO₃ in Baseflow 2021-04-08 – 2021-04-12

