

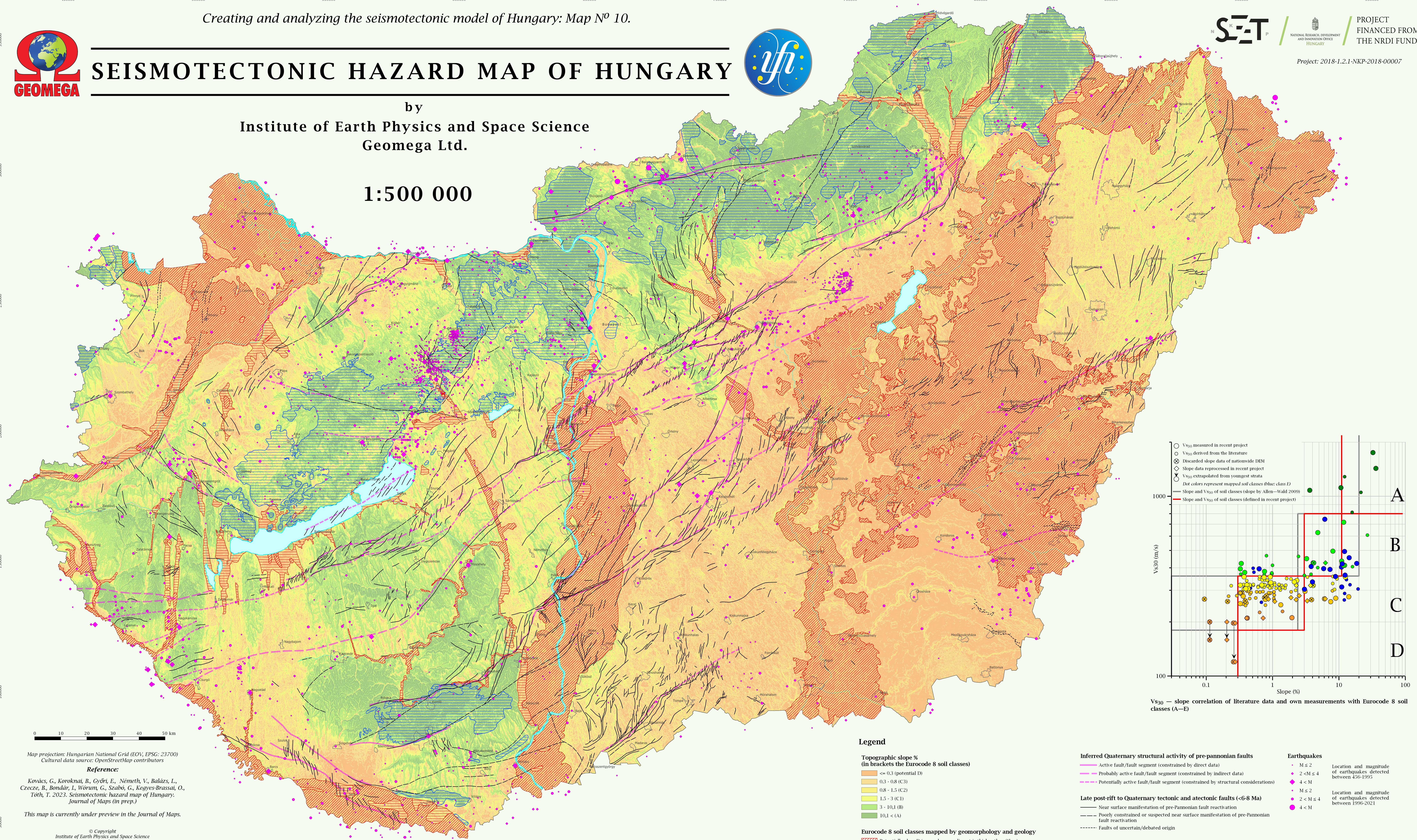


# SEISMOTECTONIC HAZARD MAP OF HUNGARY



by  
Institute of Earth Physics and Space Science  
Geomega Ltd.

1:500 000



0 10 20 30 40 50 km

Map projection: Hungarian National Grid (EOV, EPSG: 23700)  
Cultural data source: OpenStreetMap contributors

**Reference:**

Kovács, G., Koroknai, B., Györi, E., Németh, V., Balázs, L., Czece, B., Bondár, I., Wörum, G., Szabó, G., Kegecs-Brassai, O., Toth, T. 2023. Seismotectonic hazard map of Hungary. *Journal of Maps* (in prep.)

This map is currently under preview in the *Journal of Maps*.

**Legend**

- Topographic slope % (in brackets the Eurocode 8 soil classes)**
  - <= 0.3 (potential D)
  - 0.3 - 0.8 (C3)
  - 0.8 - 1.5 (C2)
  - 1.5 - 3 (C1)
  - 3 - 10,1 (B)
  - 10,1 < (A)
- Eurocode 8 soil classes mapped by geomorphology and geology**
  - Potentially class D (young loose sediment is thicker than 25 m)
  - Class D based on geomorphology, but the young, loose sediment is thinner than 25 m
  - Mapped extent of soil class potentially E

- Inferred Quaternary structural activity of pre-pannonian faults**
  - Active fault/fault segment (constrained by direct data)
  - Probably active fault/fault segment (constrained by indirect data)
  - Potentially active fault/fault segment (constrained by structural considerations)
- Late post-rift to Quaternary tectonic and ateconic faults (<6-8 Ma)**
  - Near surface manifestation of pre-Pannonian fault reactivation
  - Poorly constrained or suspected near surface manifestation of pre-Pannonian fault reactivation
  - Faults of uncertain/debated origin
- Earthquakes**
  - M ≤ 2
  - 2 < M ≤ 4
  - 4 < M
  - M ≤ 2
  - 2 < M ≤ 4
  - 4 < M

