

Fig. 1

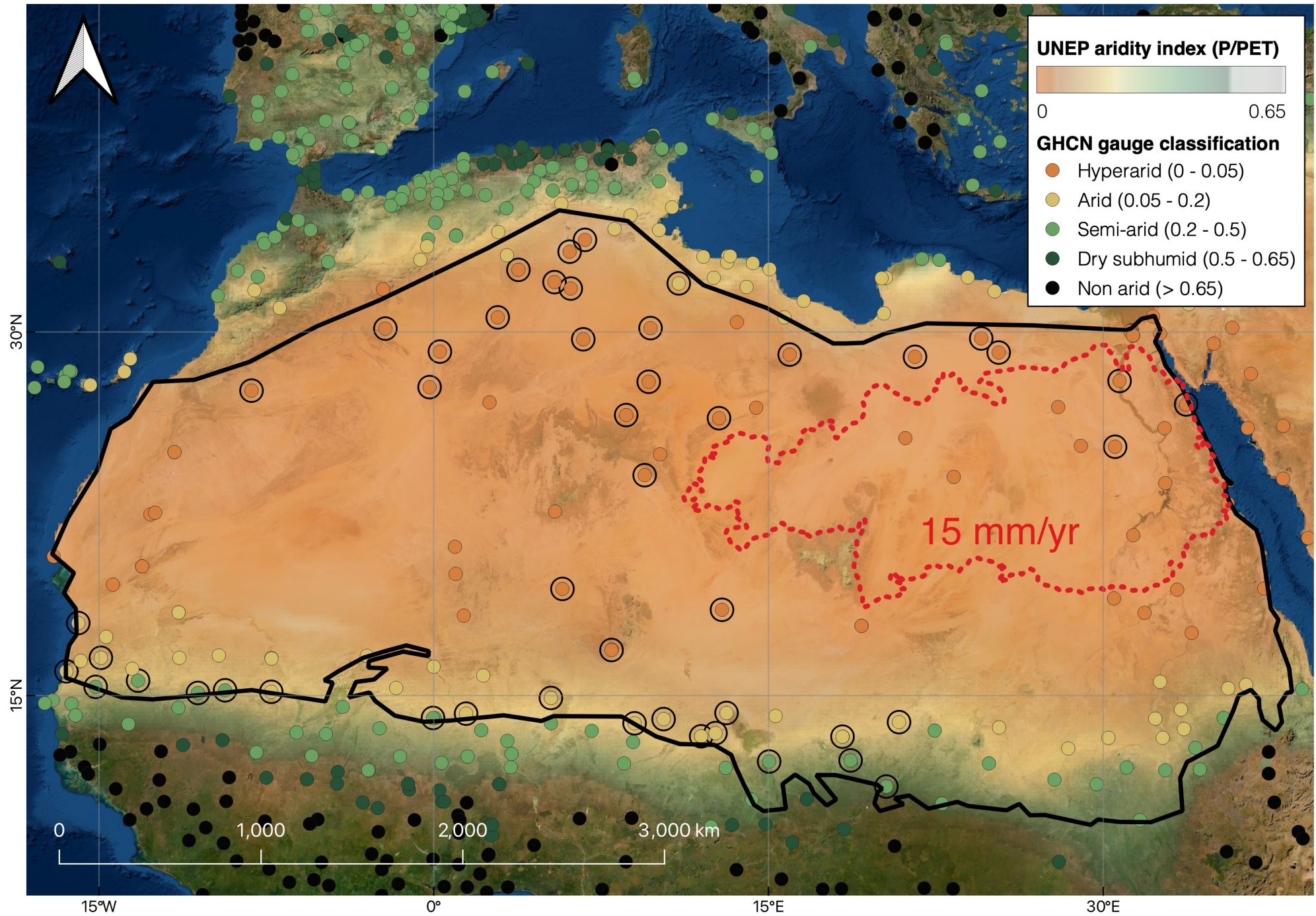


Fig. S1

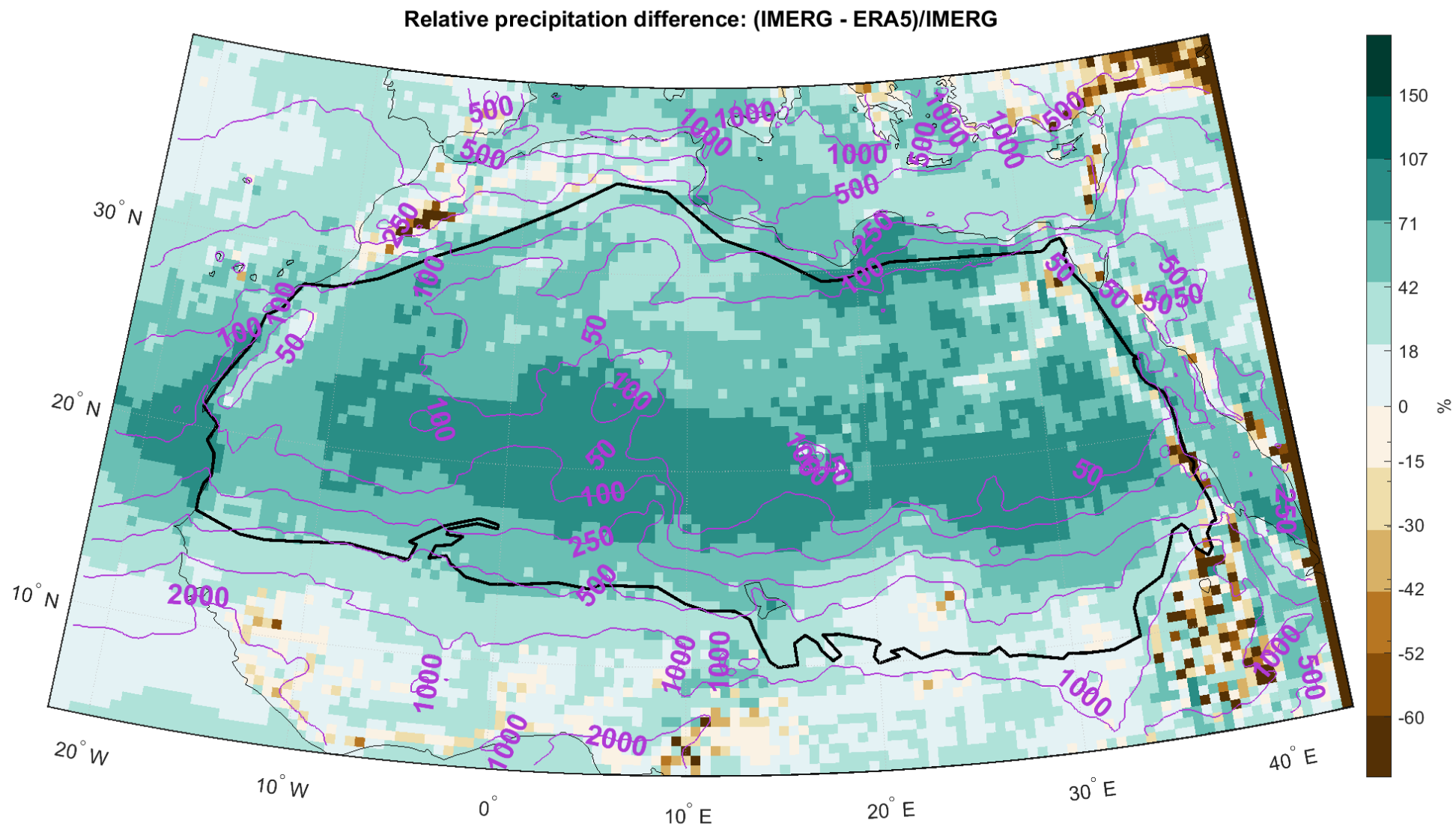




Fig. 2

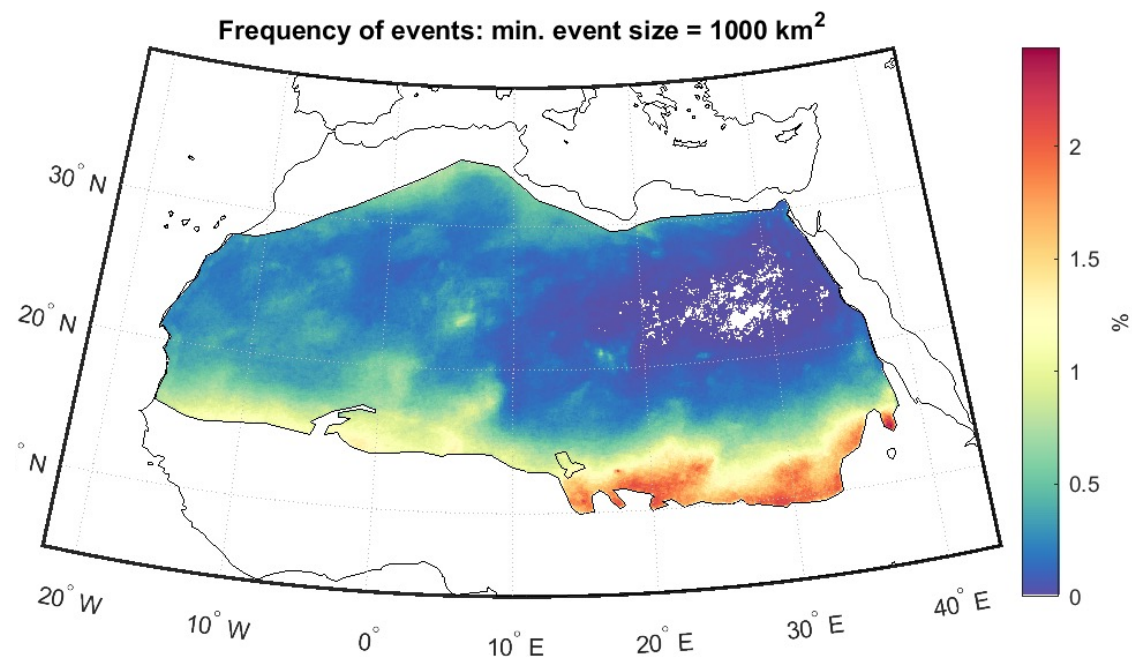
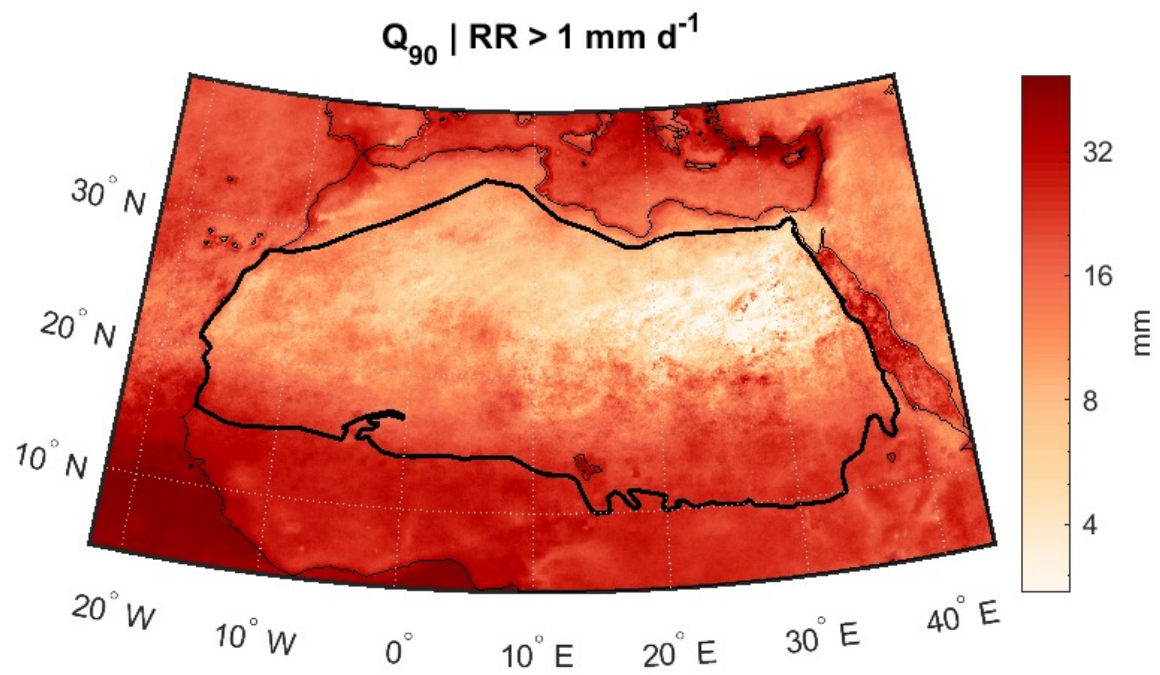
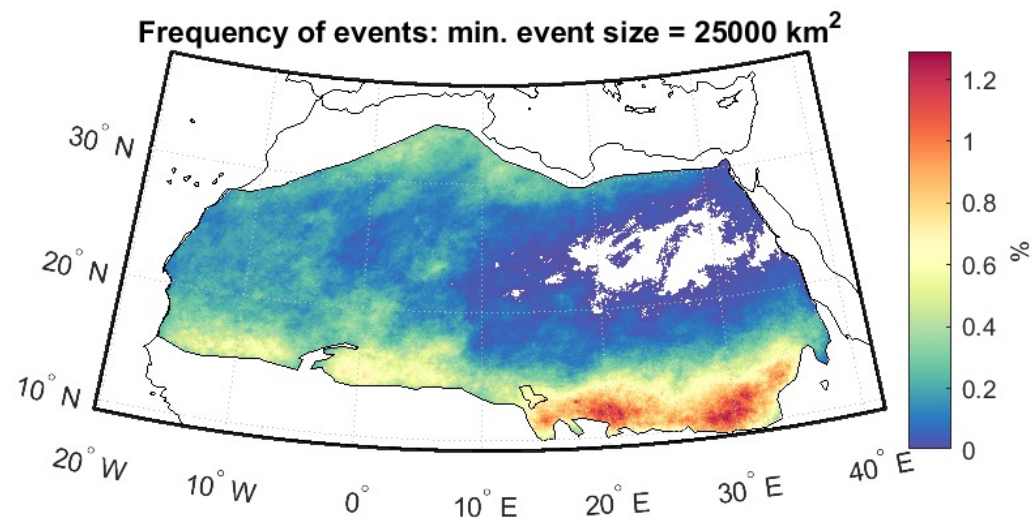
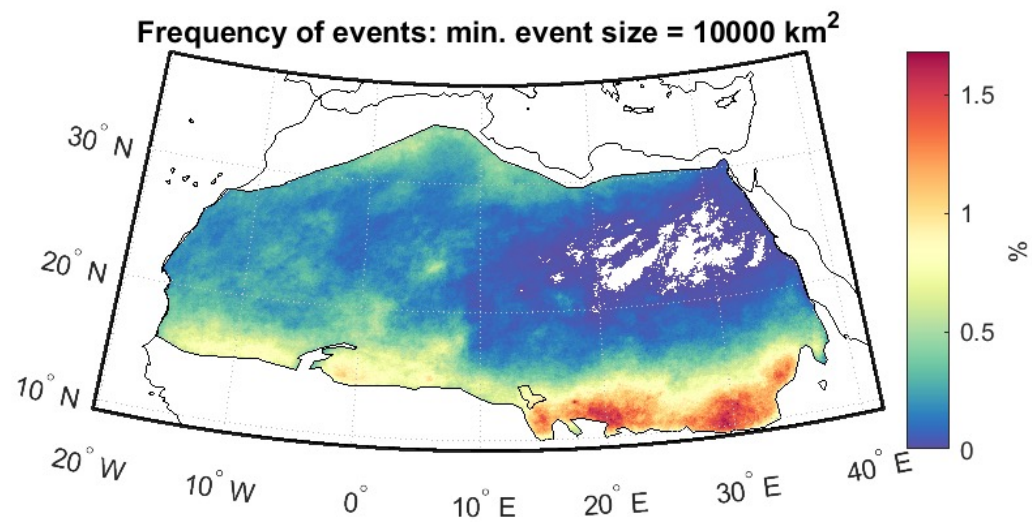


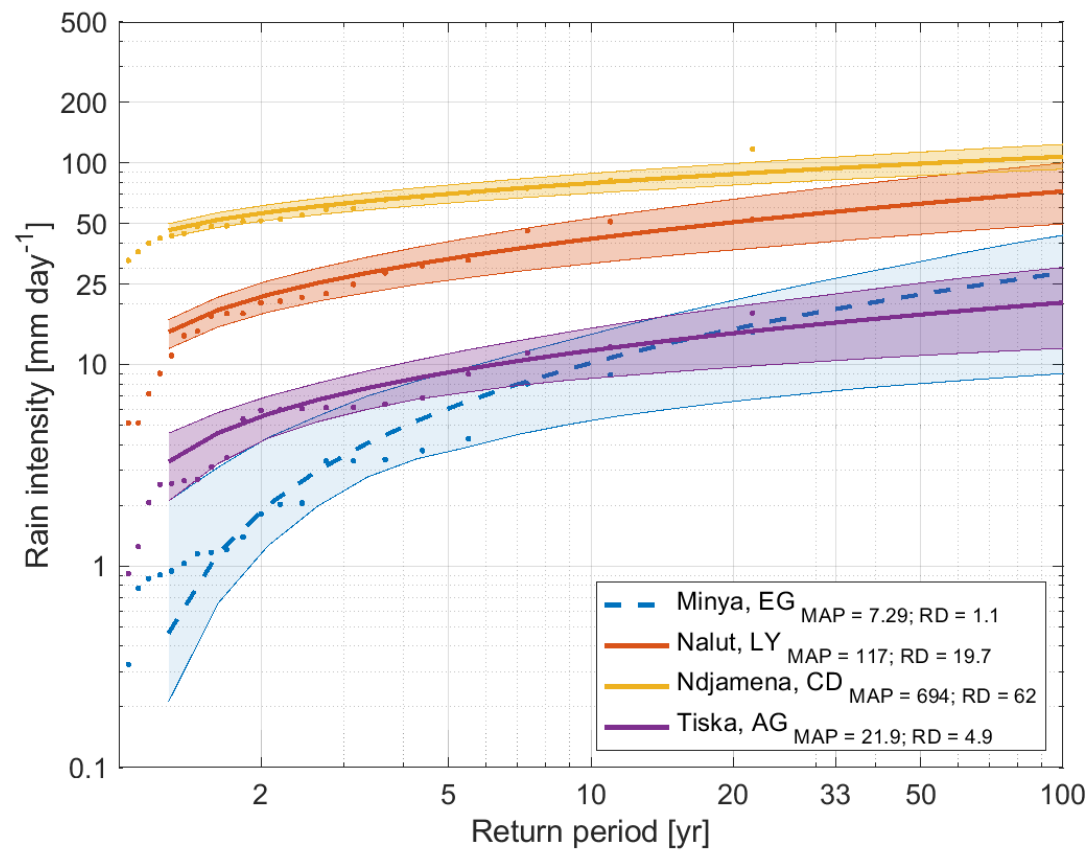
Fig.  
S2



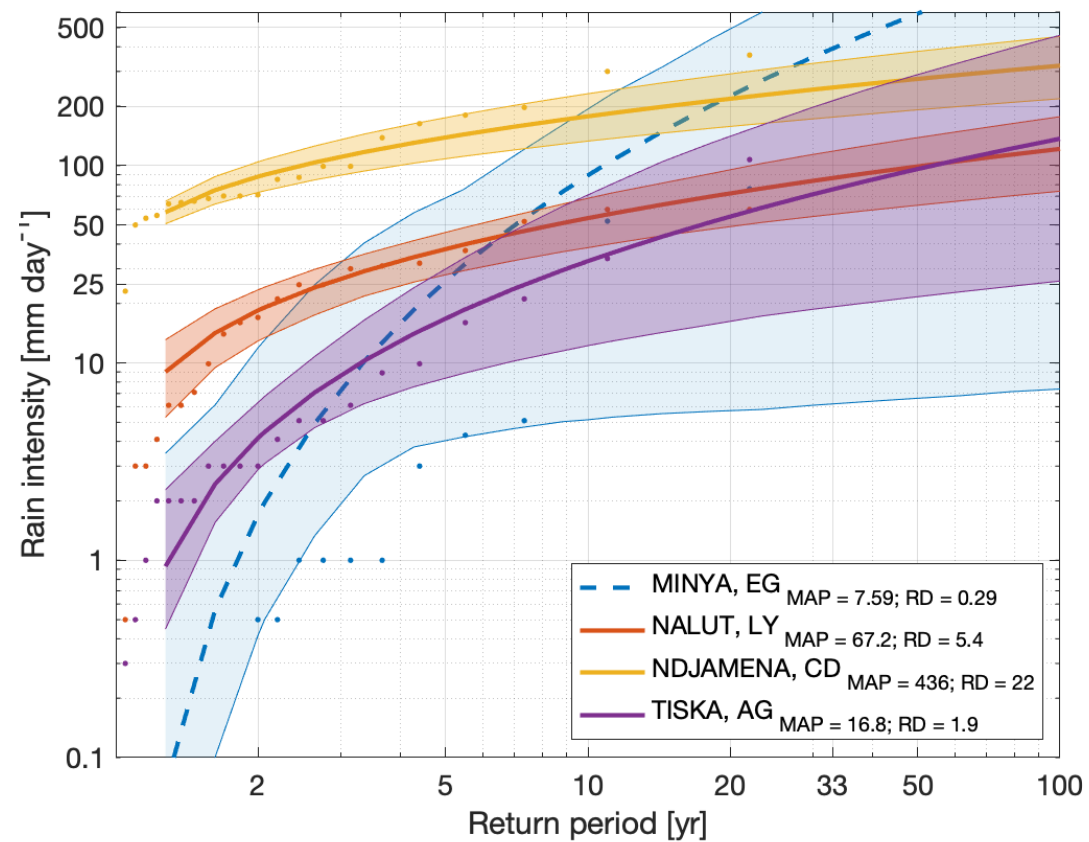


# Fig. S3

(a)



(b)



# Fig. S4

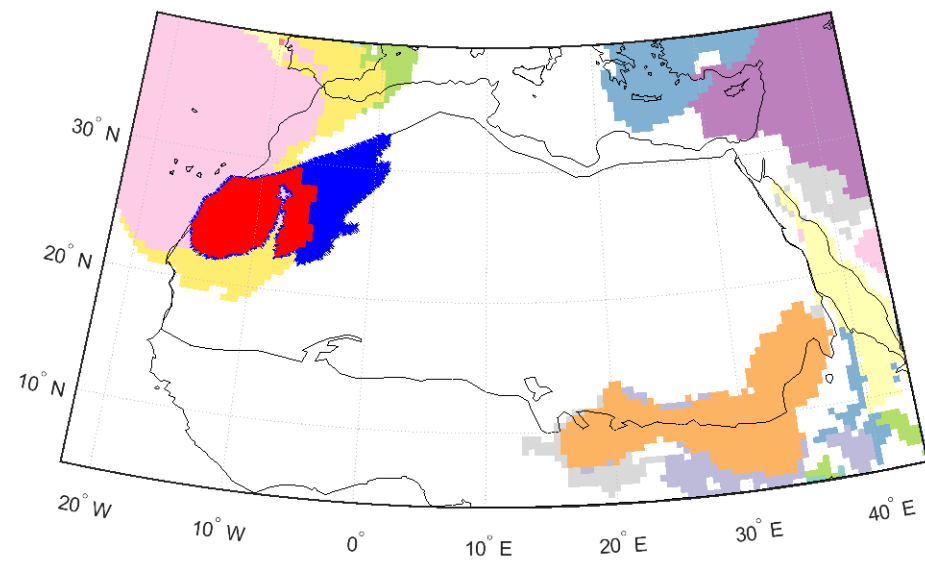
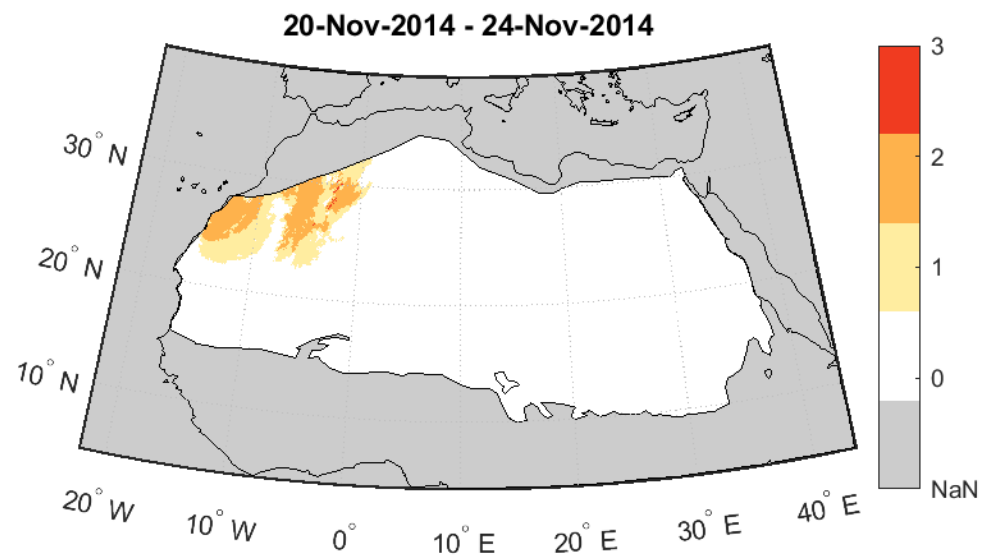
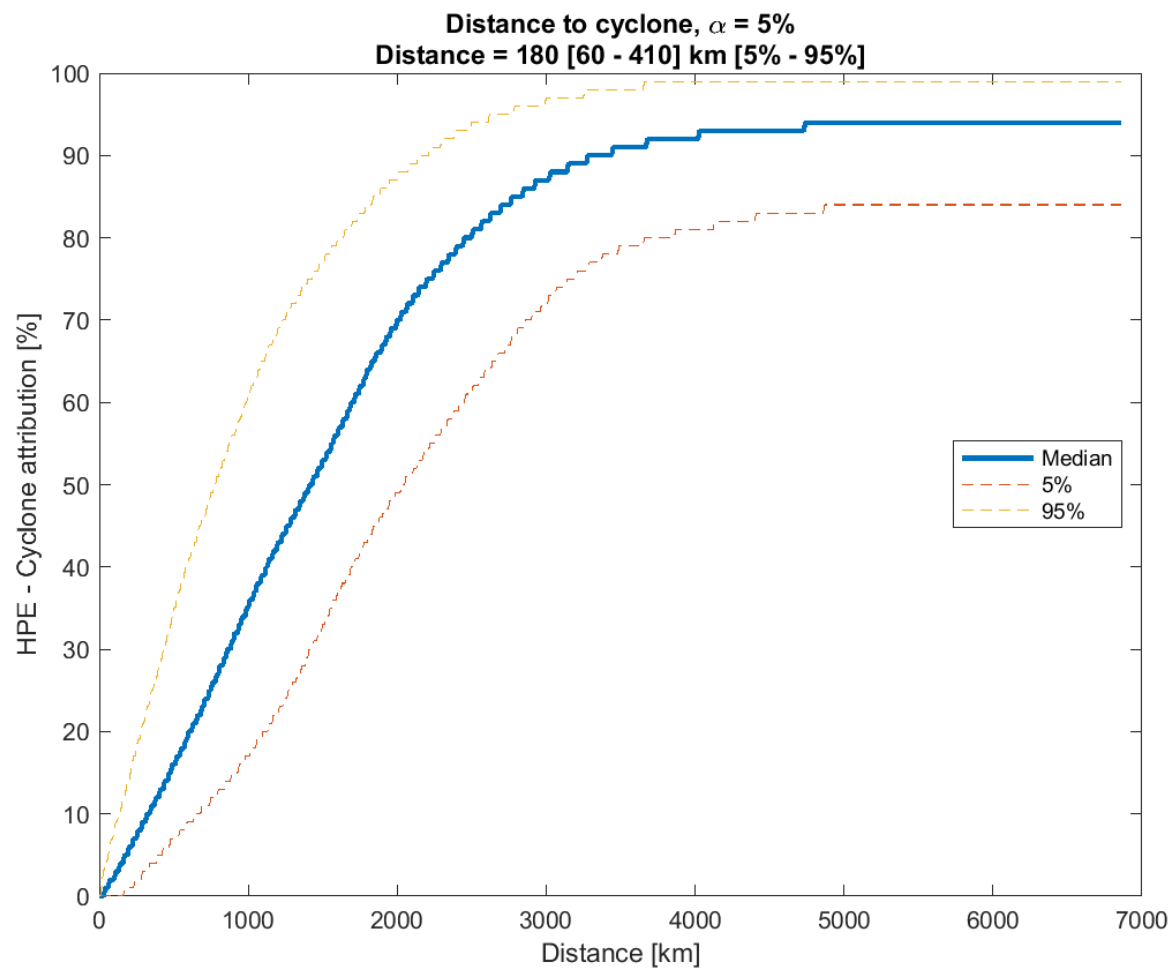


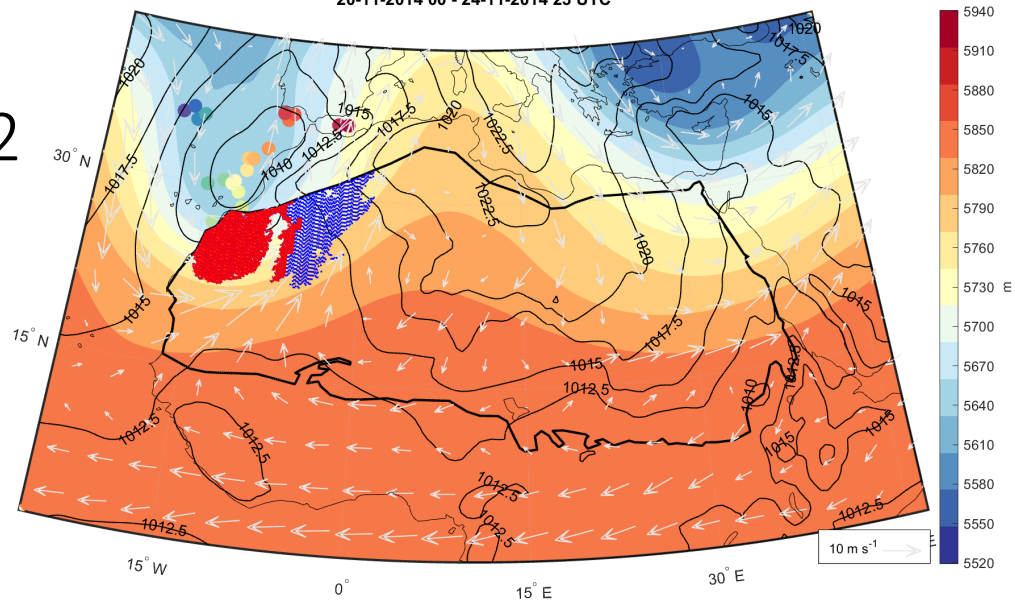


Fig.  
S3



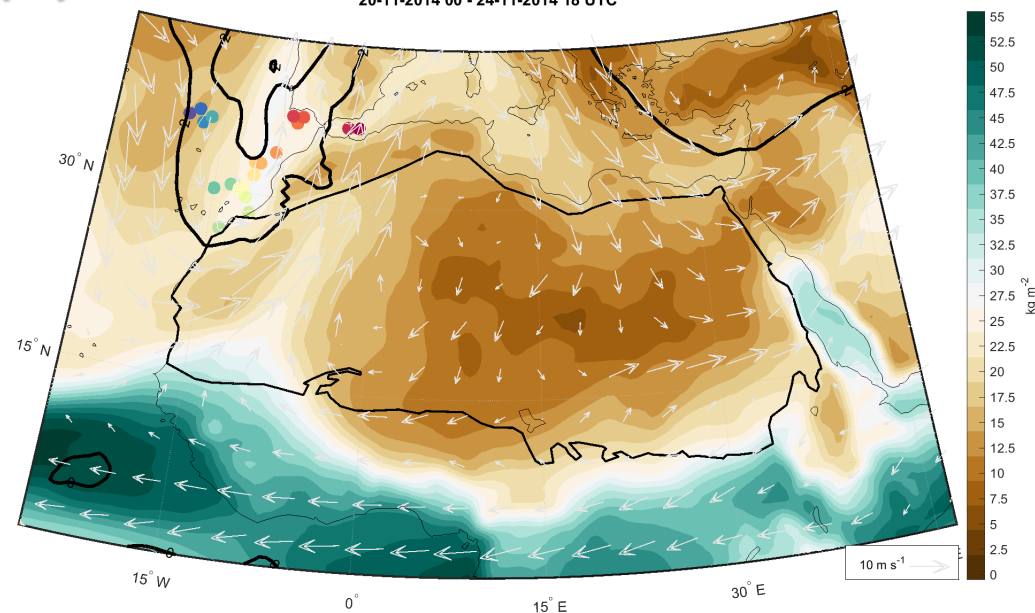
(a)

Z @ 500 + MSL @ 0 + wind @ 700  
20-11-2014 00 - 24-11-2014 23 UTC



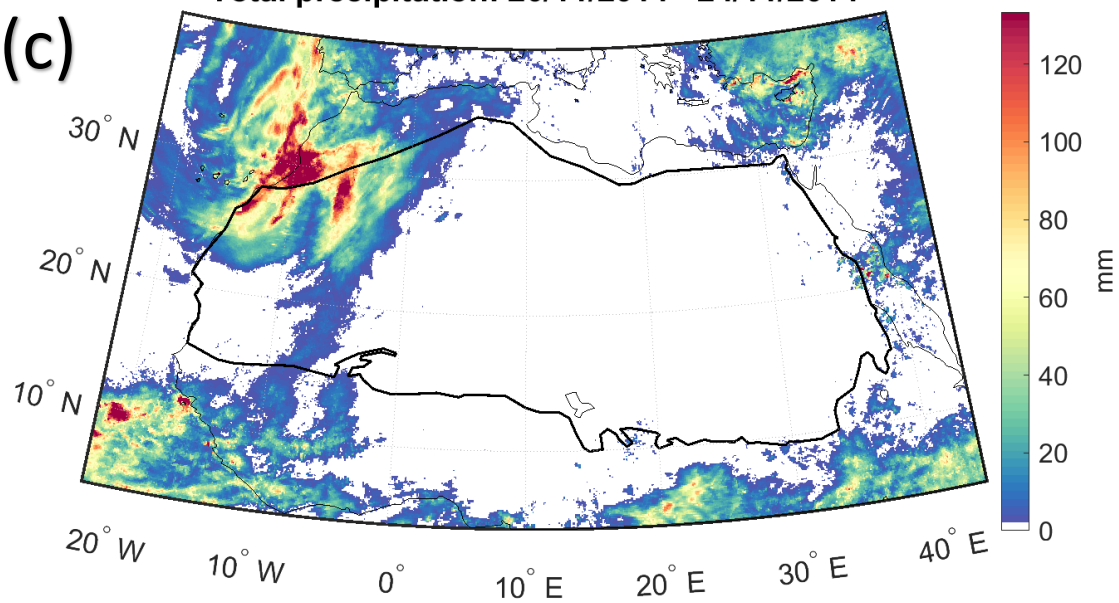
(b)

TCW @ 0 + PV @ 325 + wind @ 700  
20-11-2014 00 - 24-11-2014 18 UTC



Total precipitation: 20/11/2014 - 24/11/2014

(c)



% of mean annual precip.

(d)

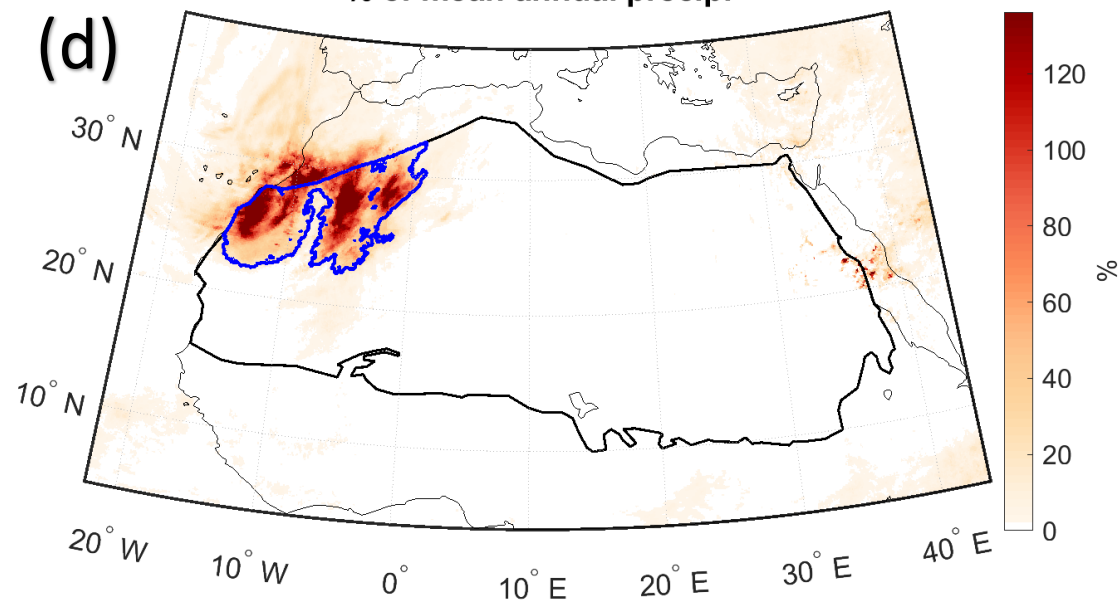


Fig. 2





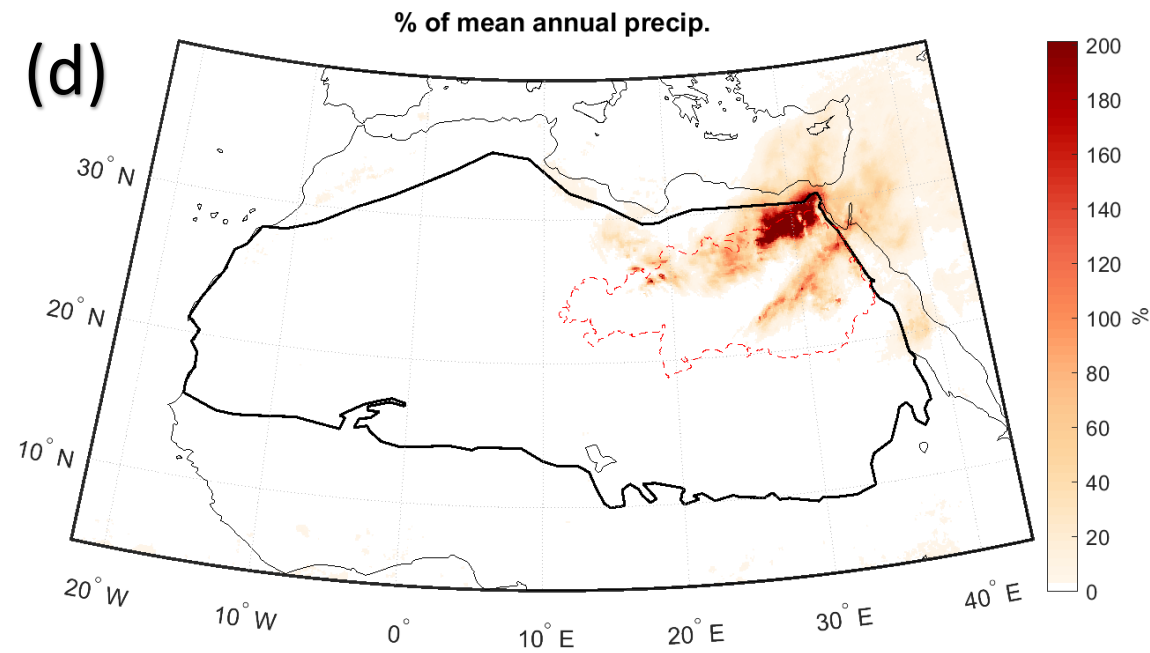
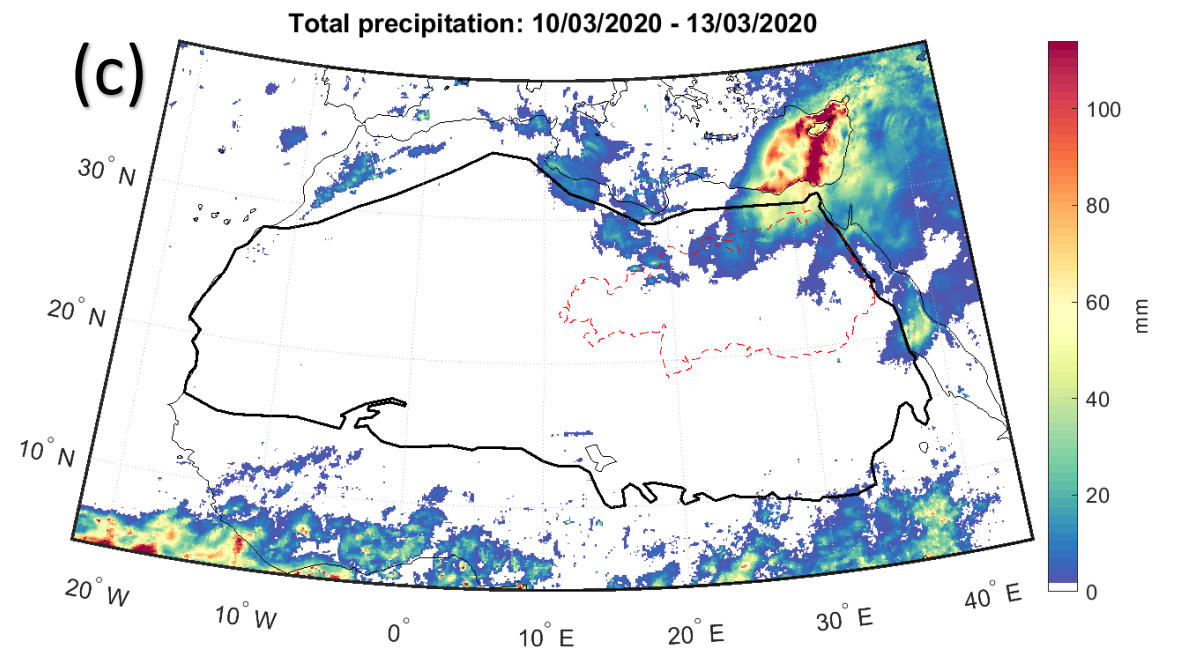
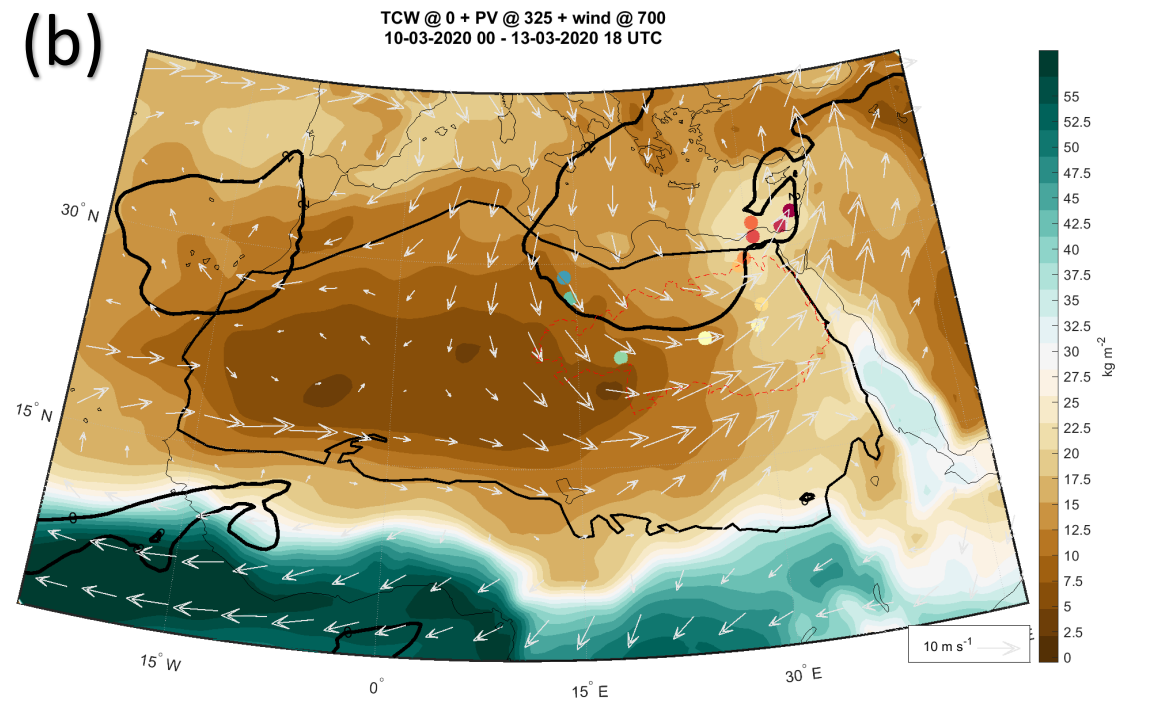
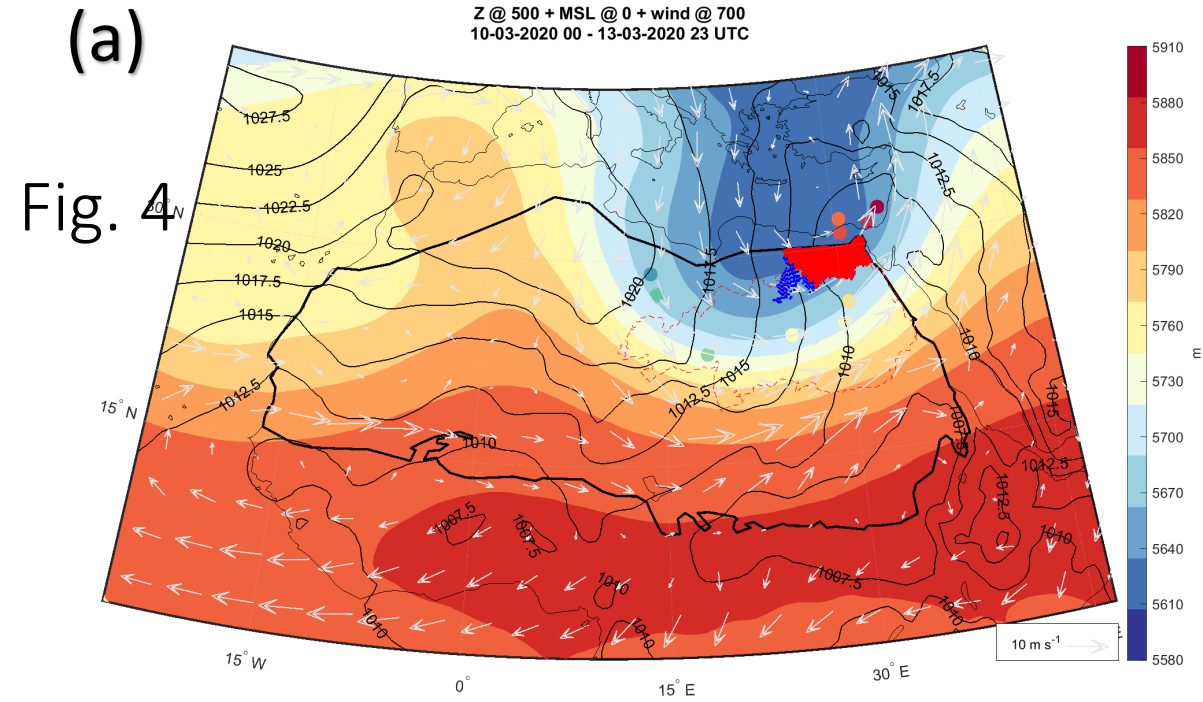




Fig. 4

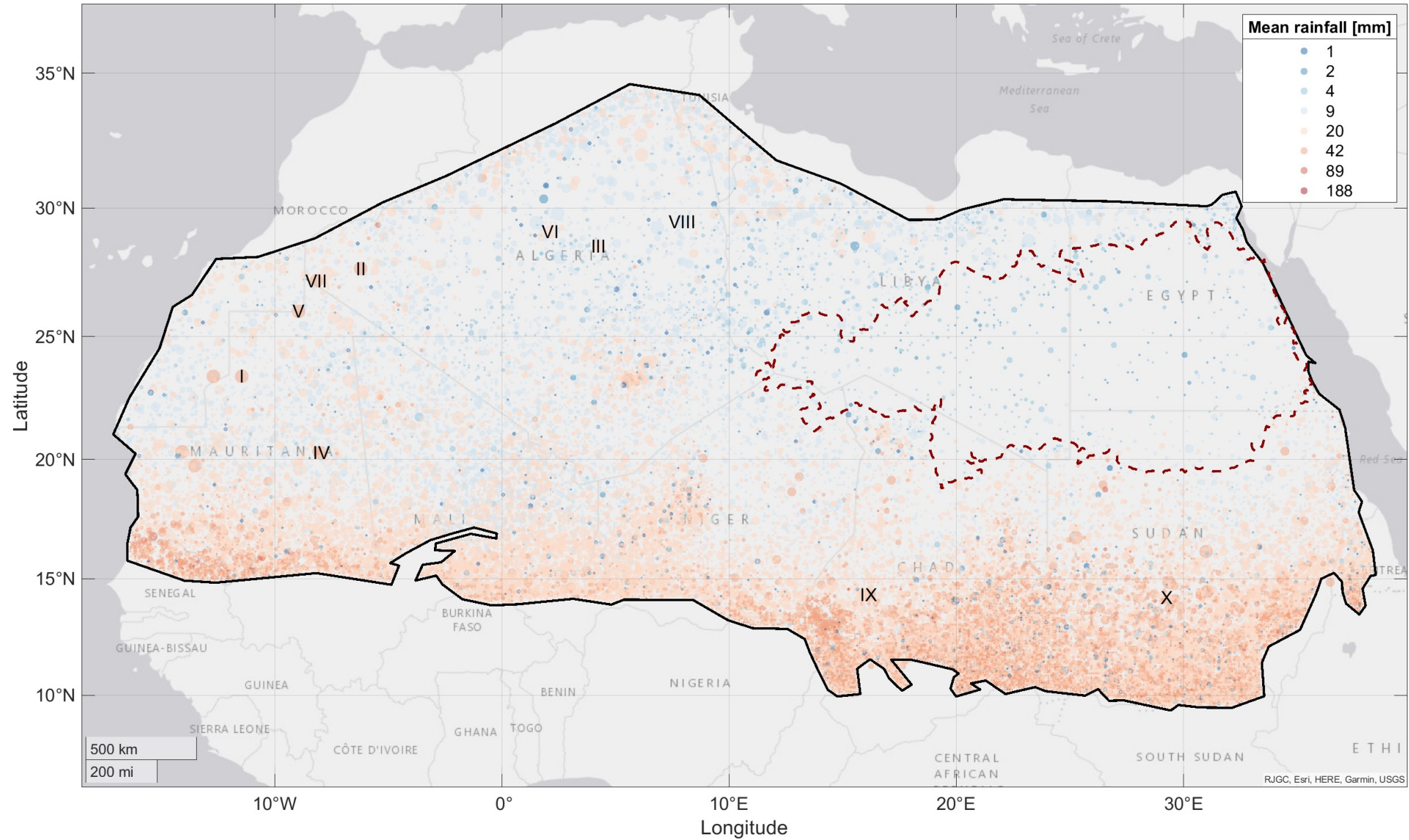


Fig.  
S5

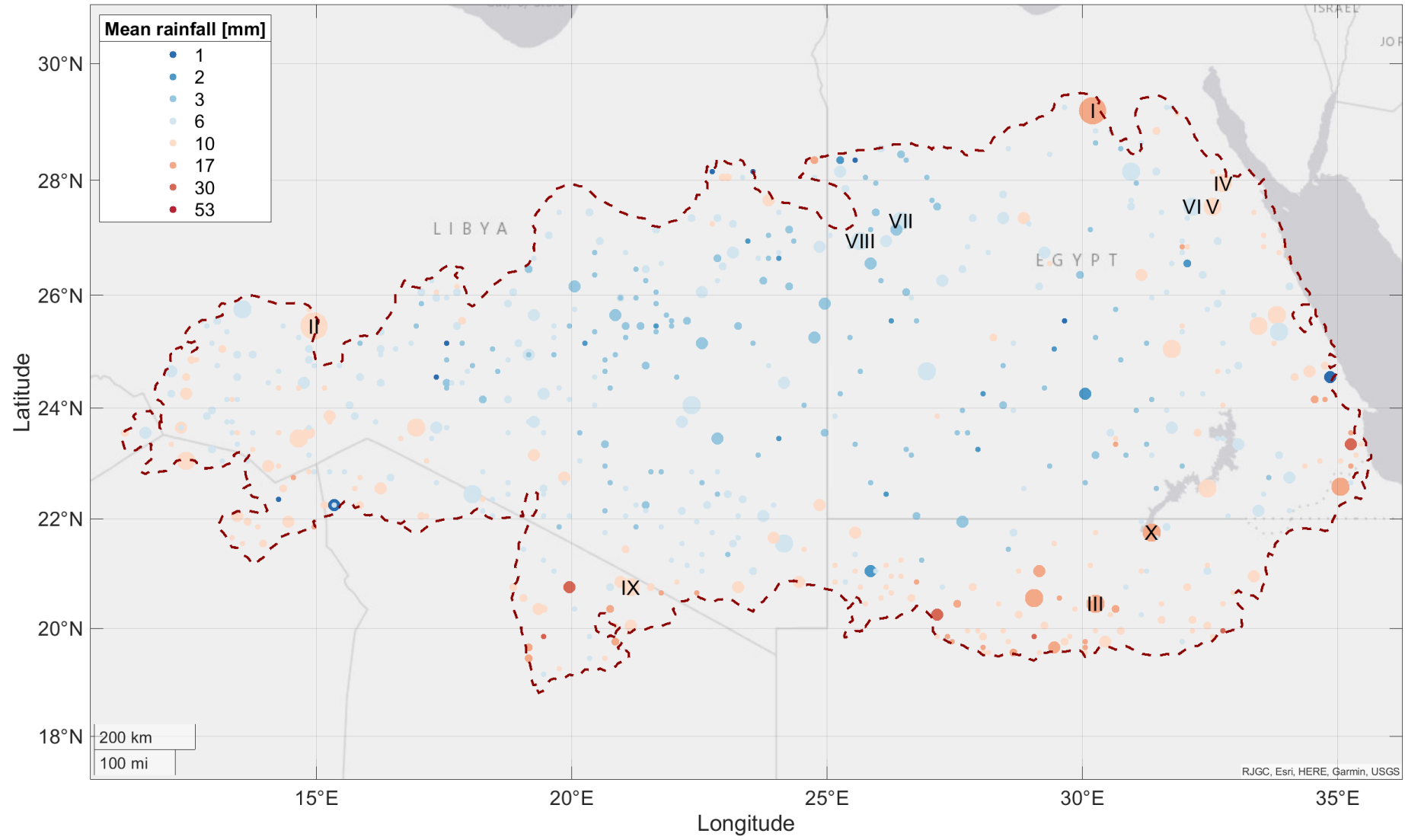




Fig.  
S5

Contribution of HPEs to total rainfall: min. event size =  $1000 \text{ km}^2$ ; Mean value = 28

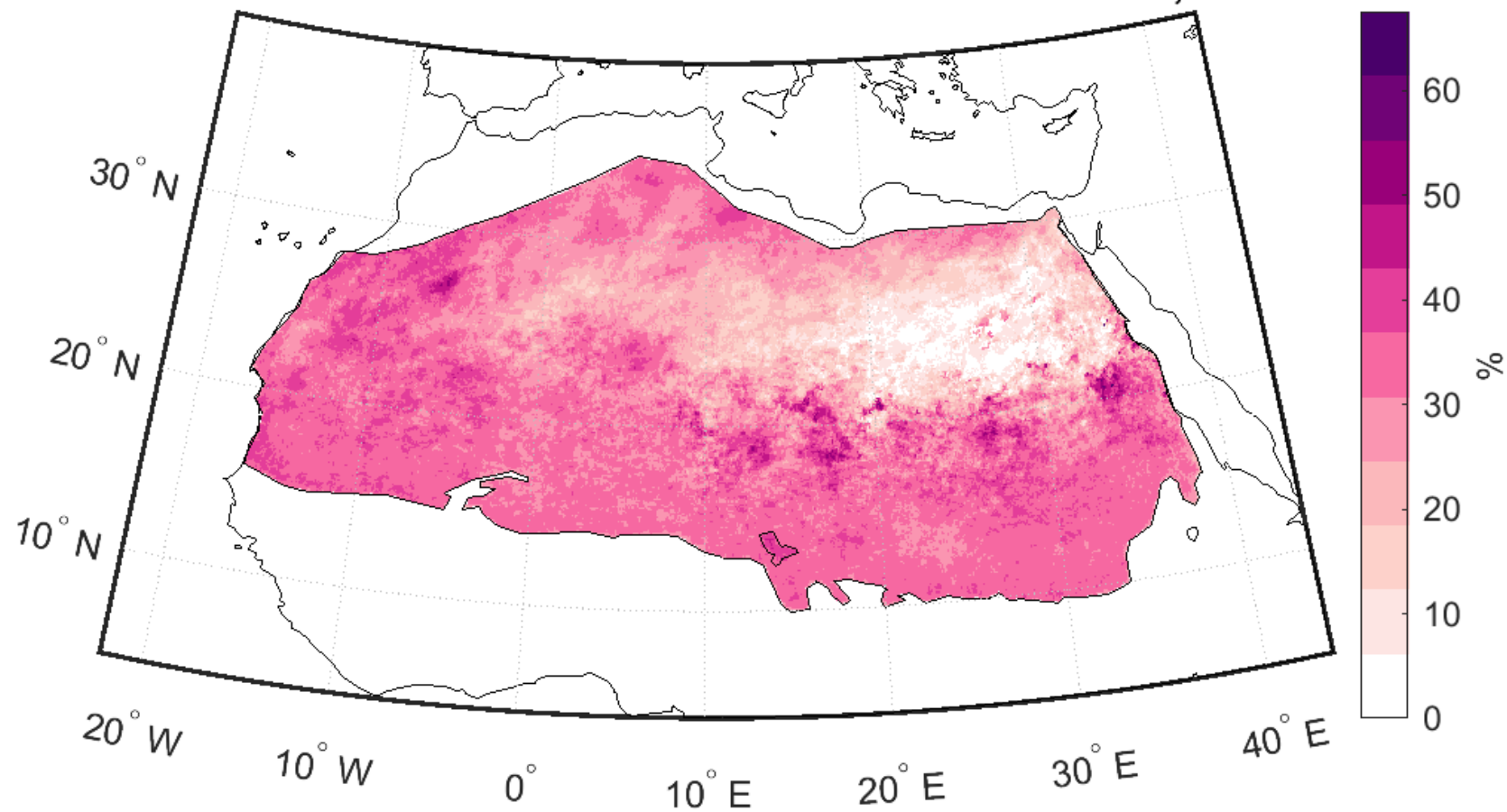


Fig. 5

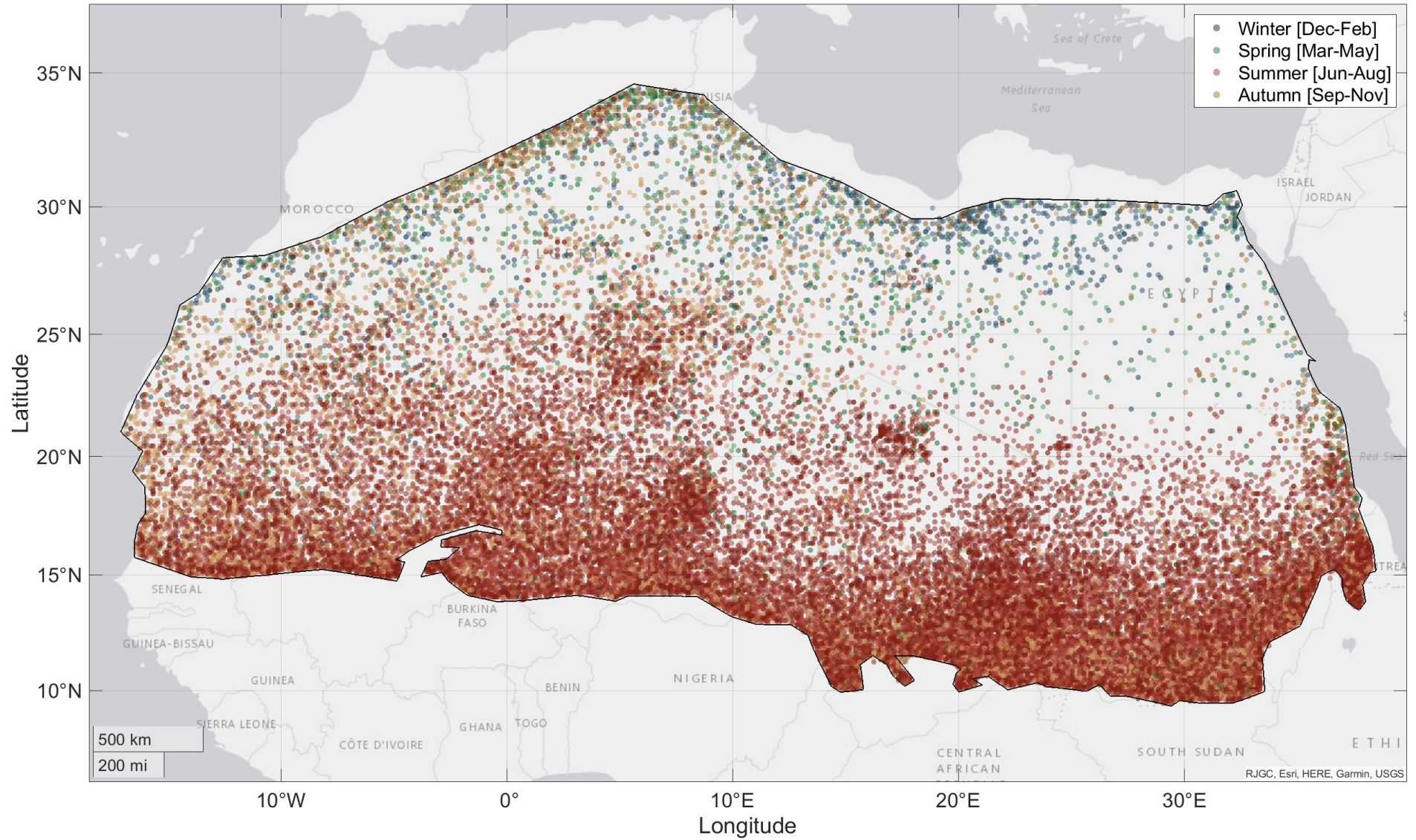


Fig. 6

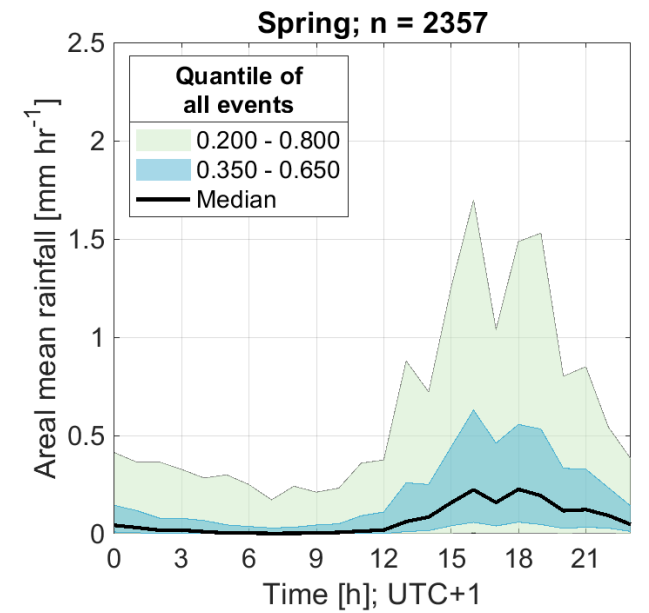
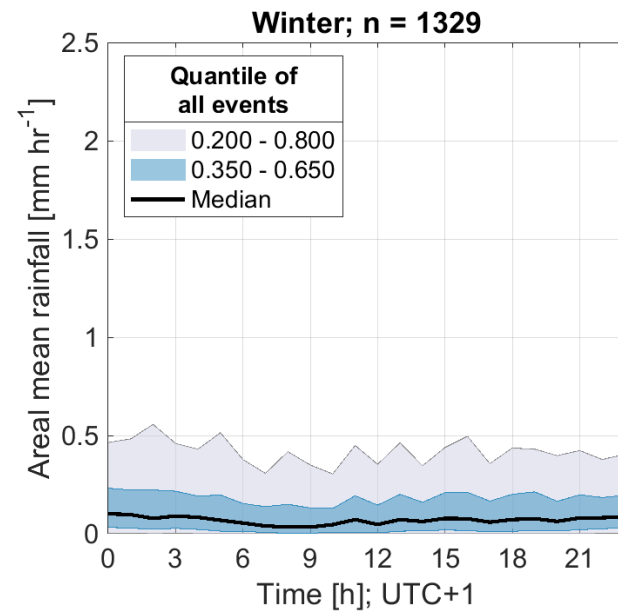
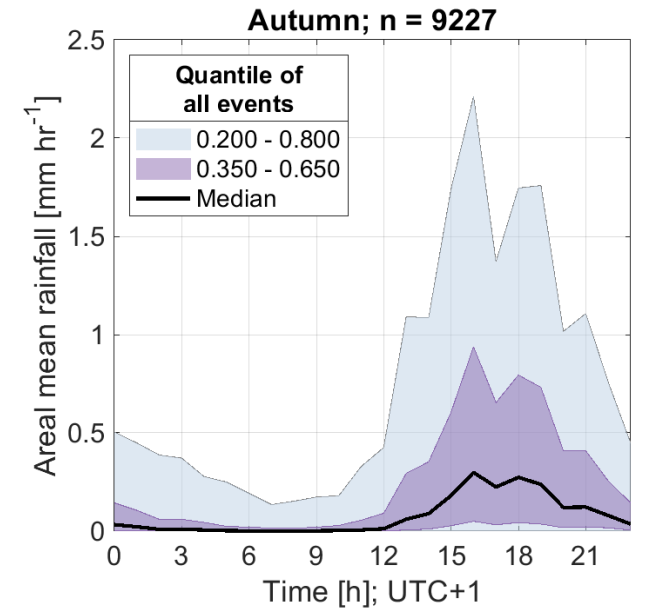
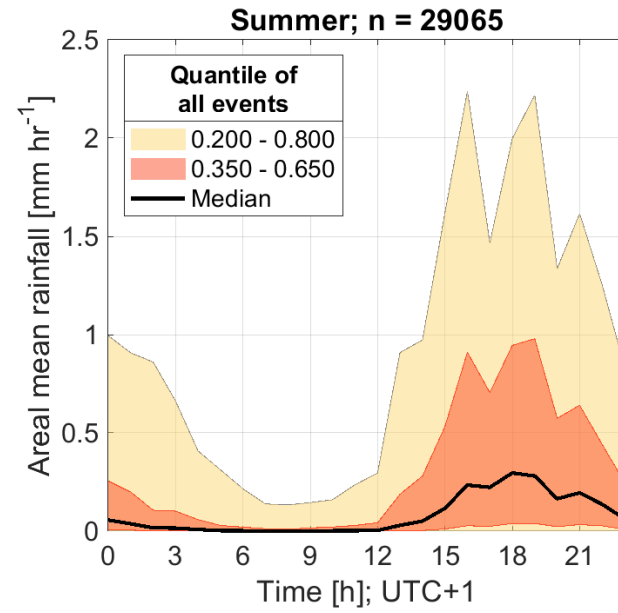




Fig.  
S6

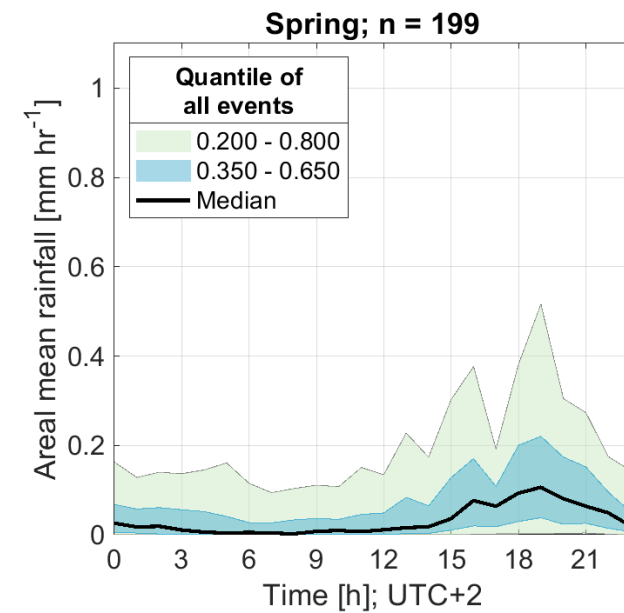
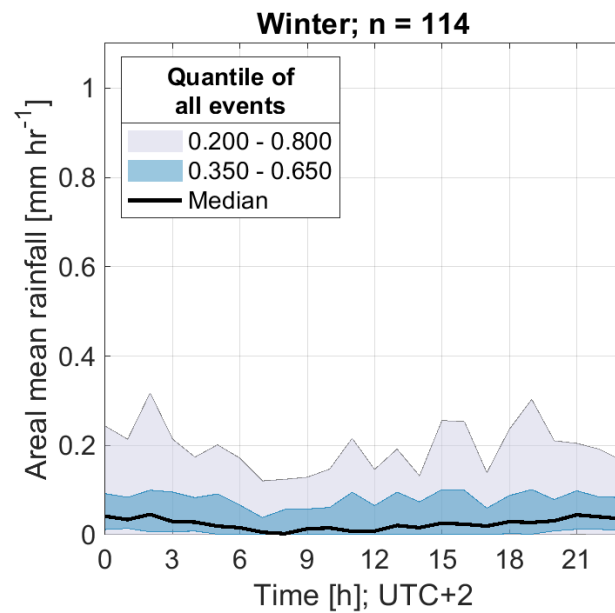
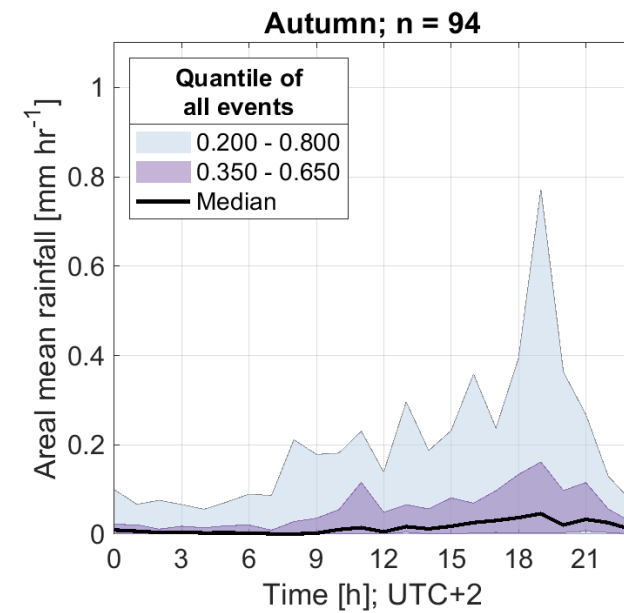
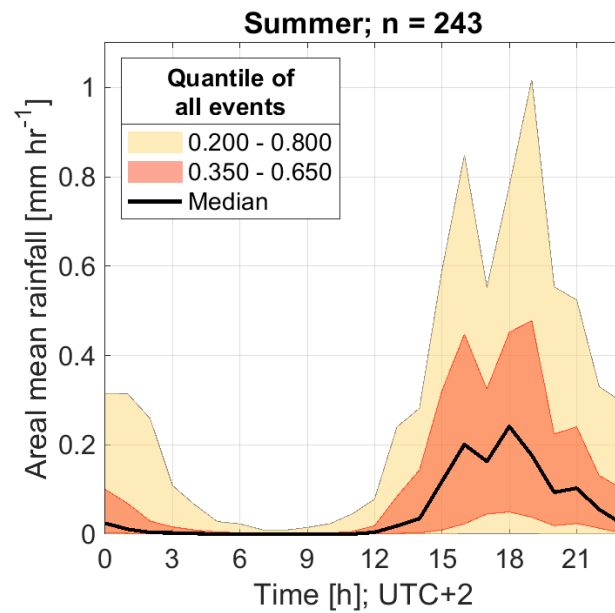


Fig.  
S7

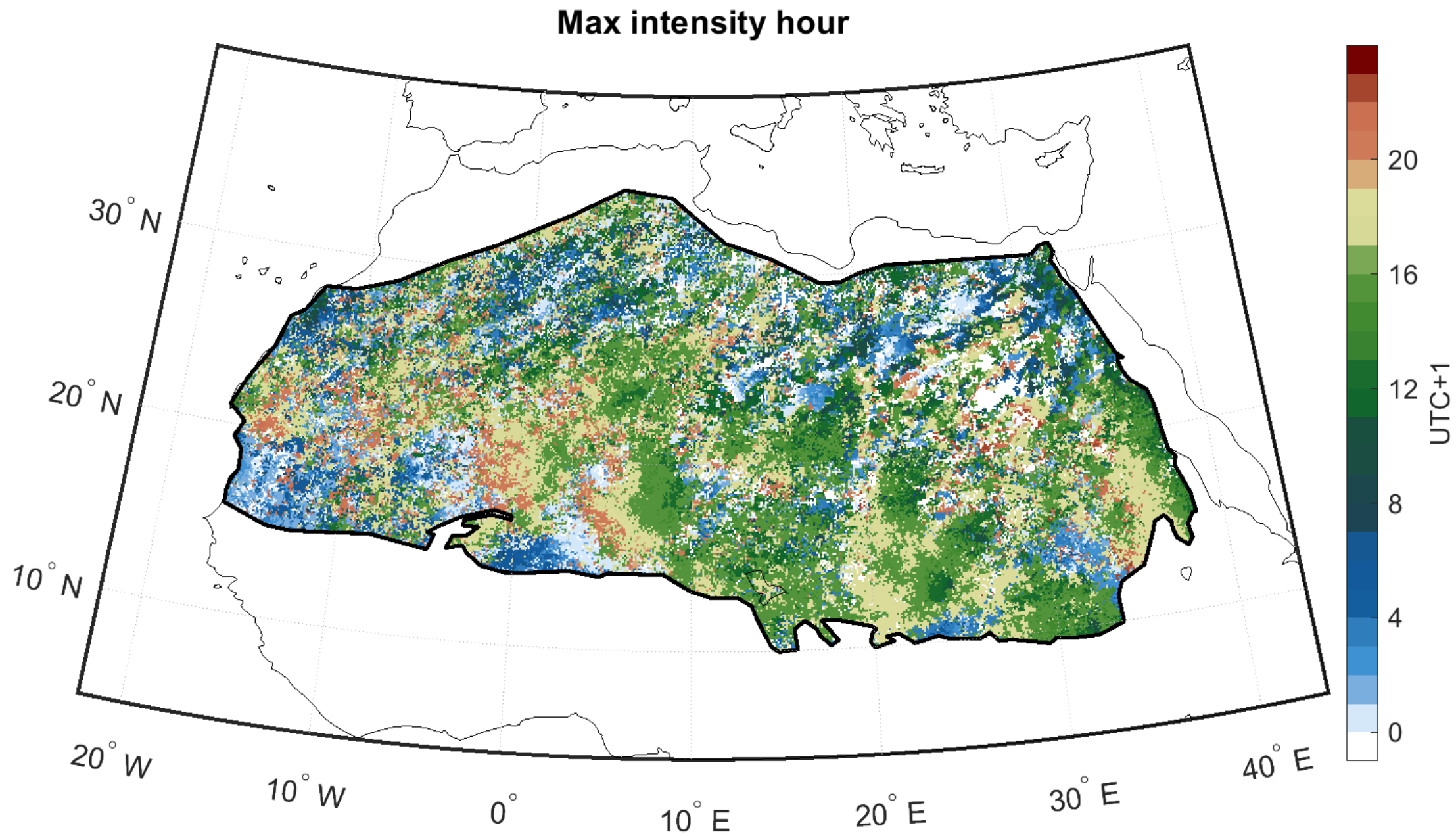
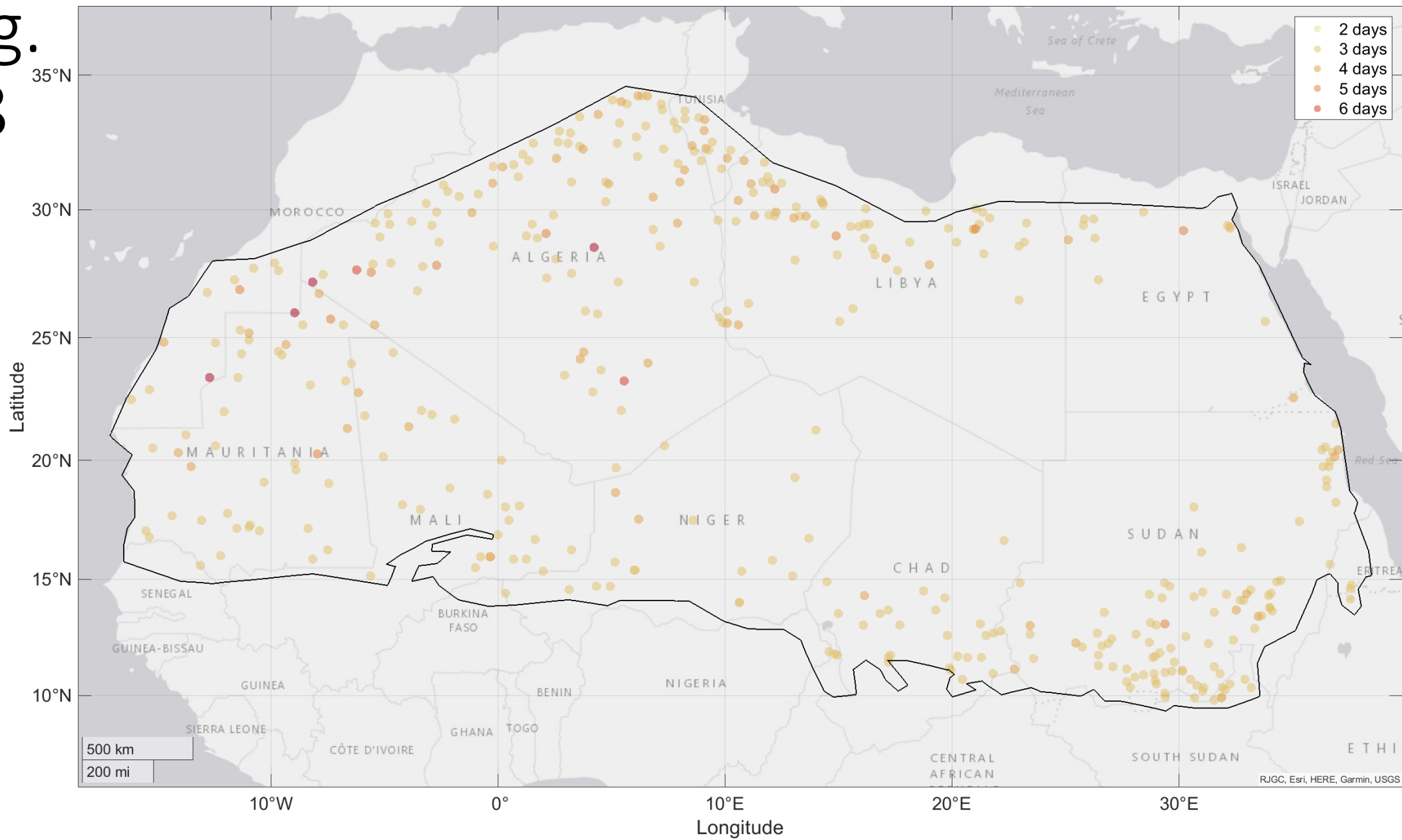
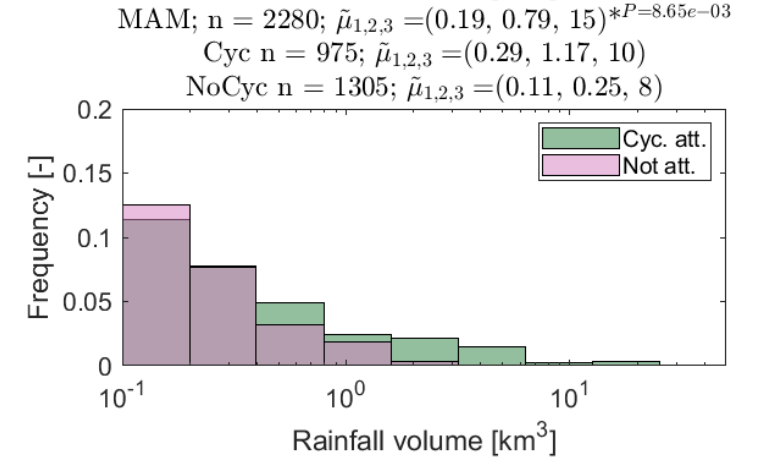
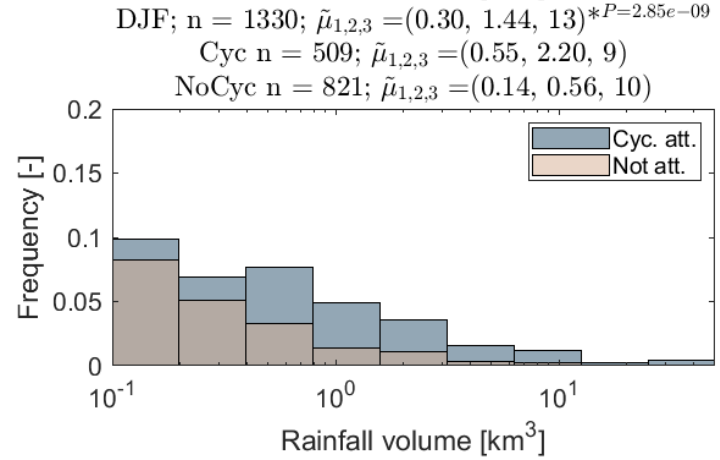
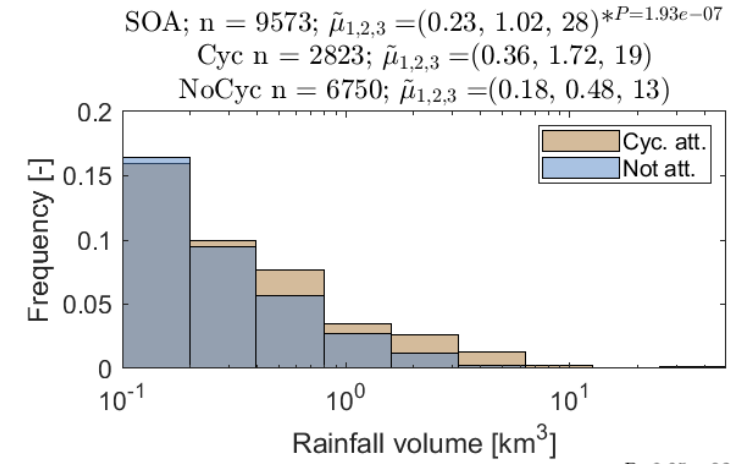
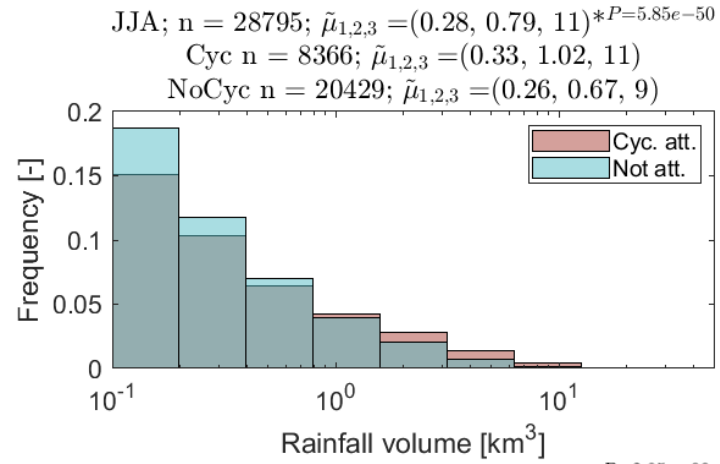


Fig. S8



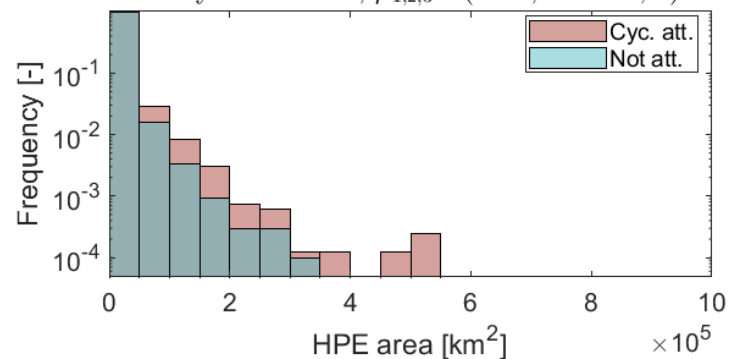


# Fig. 7

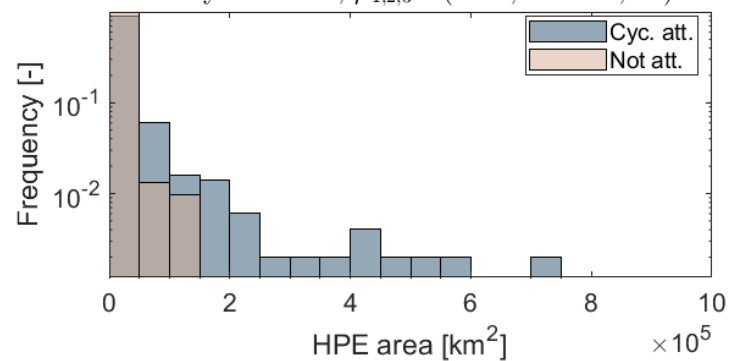


# Fig. S7

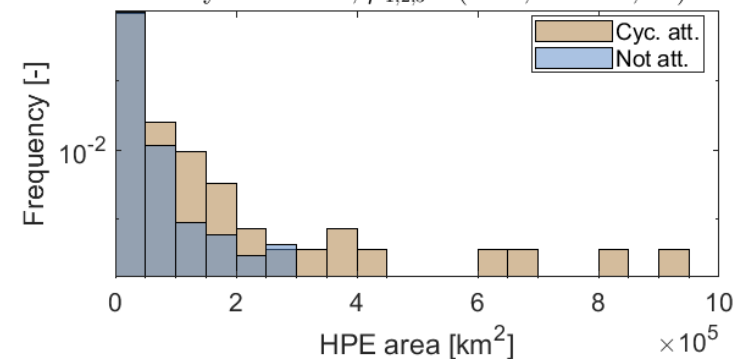
JJA;  $n = 28795$ ;  $\tilde{\mu}_{1,2,3} = (8013, 18097.0, 9) * P = 7.82e-20$   
 Cyc  $n = 8070$ ;  $\tilde{\mu}_{1,2,3} = (10161, 23764.0, 8)$   
 NoCyc  $n = 20725$ ;  $\tilde{\mu}_{1,2,3} = (7176, 15253.0, 8)$



DJF;  $n = 1330$ ;  $\tilde{\mu}_{1,2,3} = (15015, 48727.0, 8) * P = 6.82e-09$   
 Cyc  $n = 495$ ;  $\tilde{\mu}_{1,2,3} = (25136, 69384.0, 6)$   
 NoCyc  $n = 835$ ;  $\tilde{\mu}_{1,2,3} = (9015, 28899.0, 11)$



SOA;  $n = 9573$ ;  $\tilde{\mu}_{1,2,3} = (7575, 23539.0, 18) * P = 5.82e-13$   
 Cyc  $n = 2721$ ;  $\tilde{\mu}_{1,2,3} = (11396, 38509.0, 14)$   
 NoCyc  $n = 6852$ ;  $\tilde{\mu}_{1,2,3} = (6058, 13315.0, 10)$



MAM;  $n = 2280$ ;  $\tilde{\mu}_{1,2,3} = (8231, 27490.0, 11) * P = 1.92e-11$   
 Cyc  $n = 940$ ;  $\tilde{\mu}_{1,2,3} = (13078, 40896.0, 8)$   
 NoCyc  $n = 1340$ ;  $\tilde{\mu}_{1,2,3} = (4831, 9234.0, 9)$

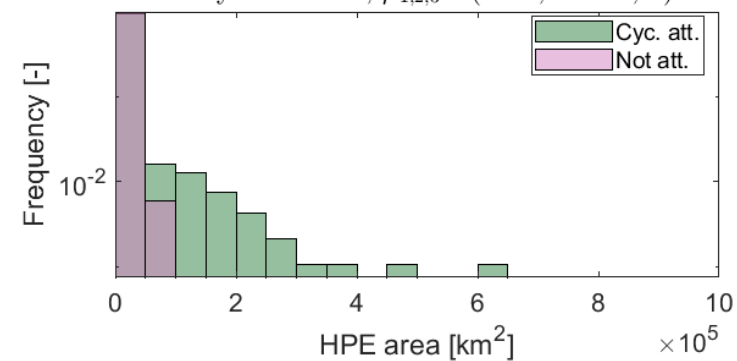
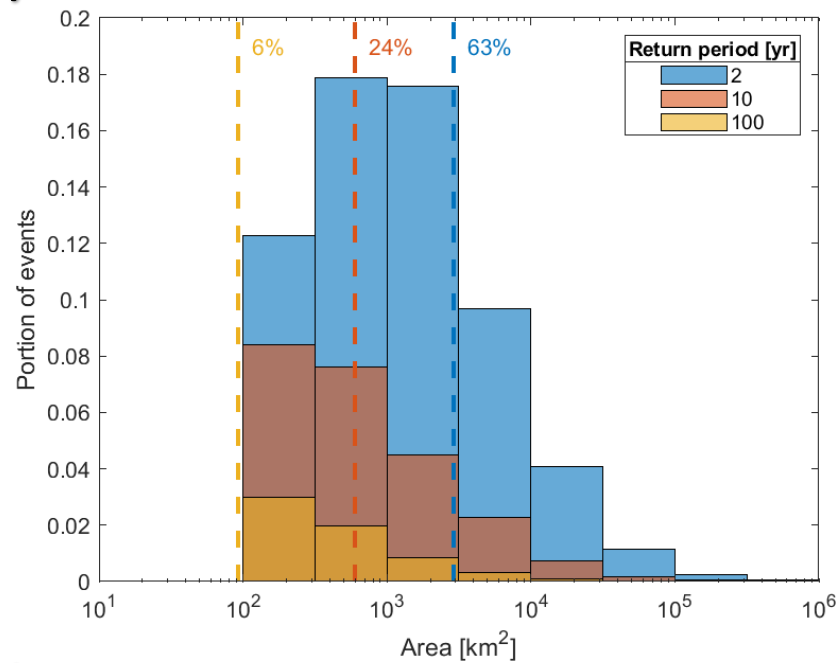
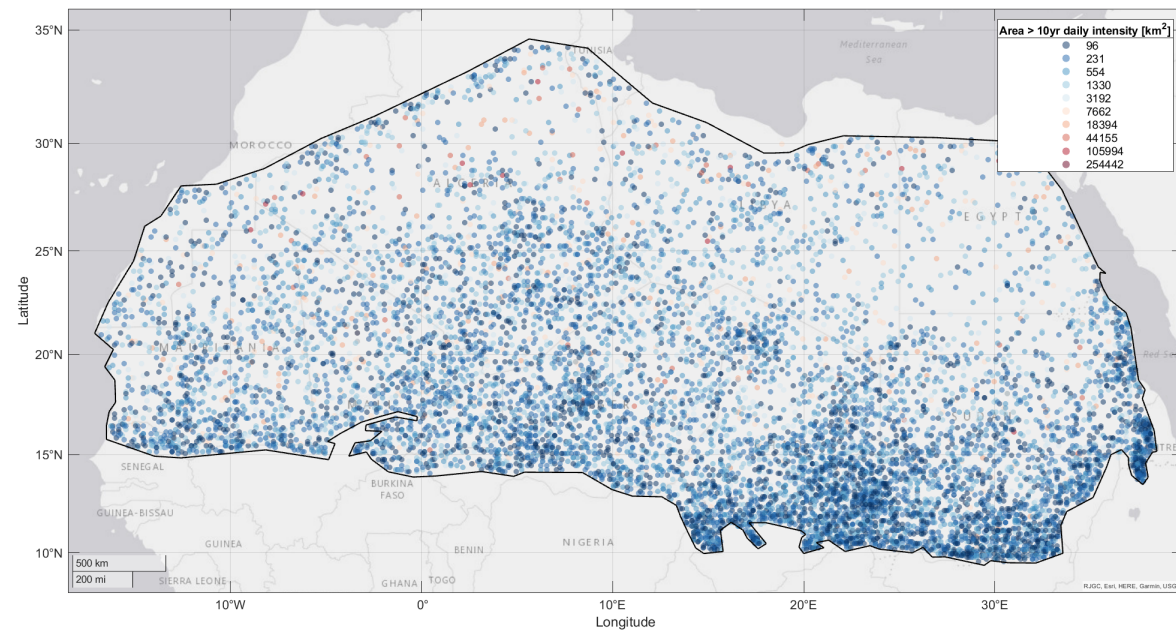


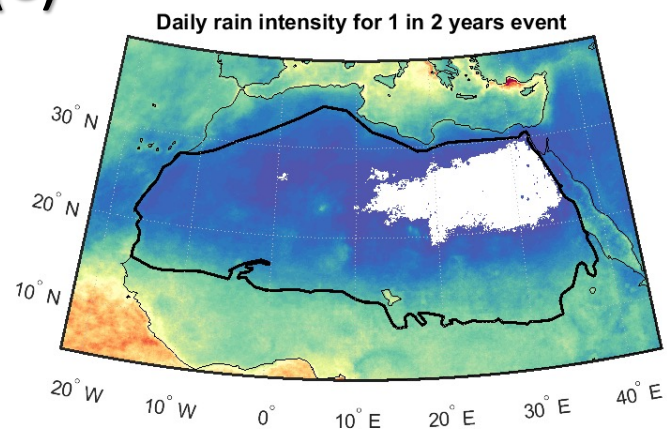
Fig. (a)  
S9



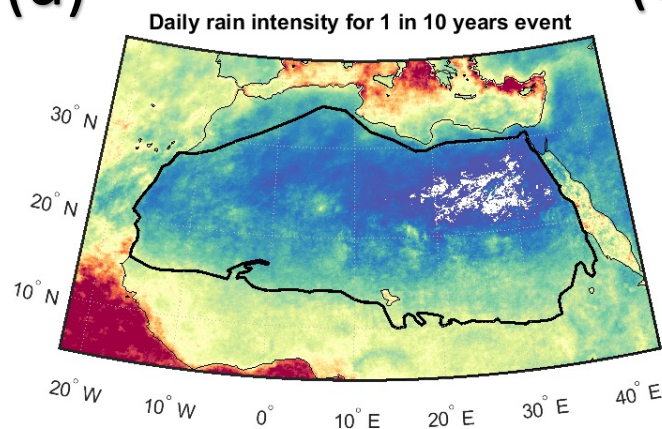
(b)



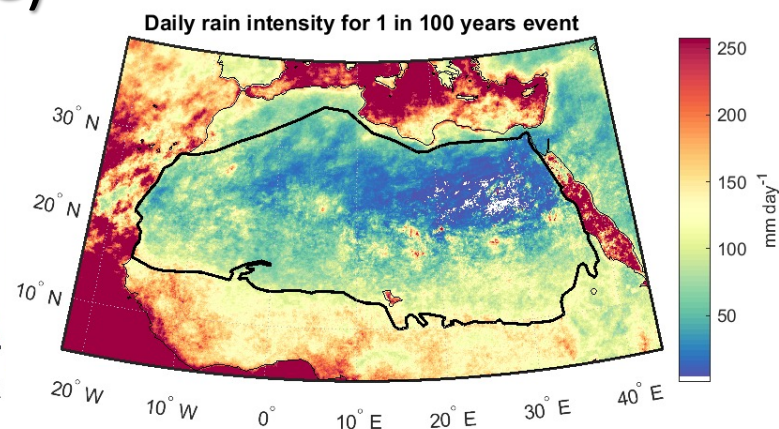
(c)



(d)

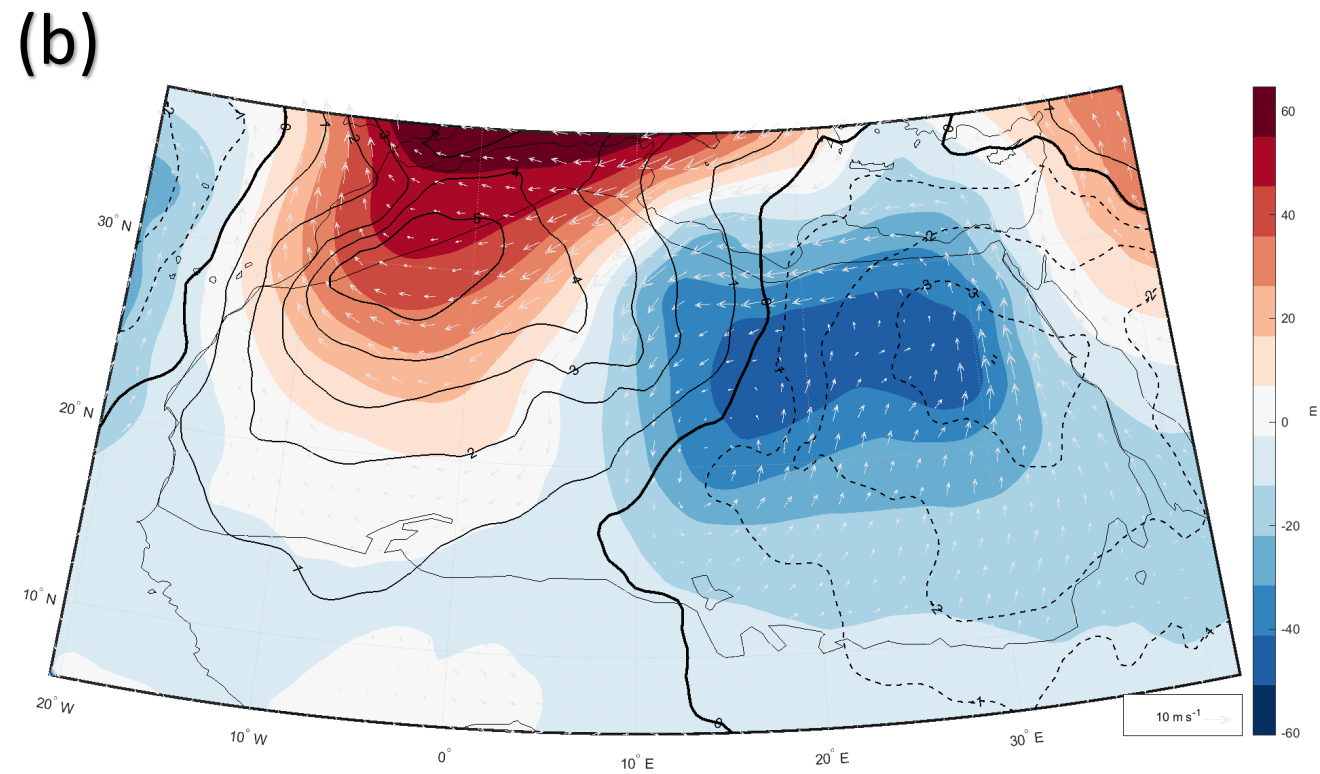
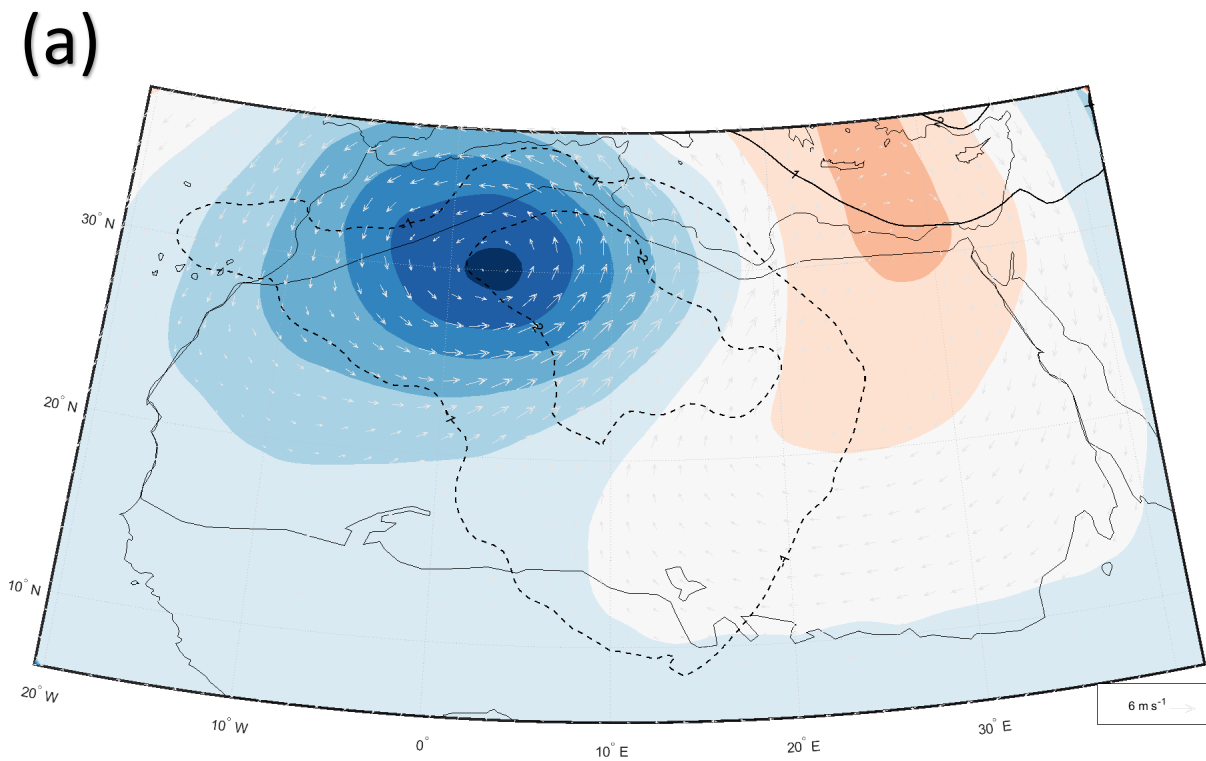


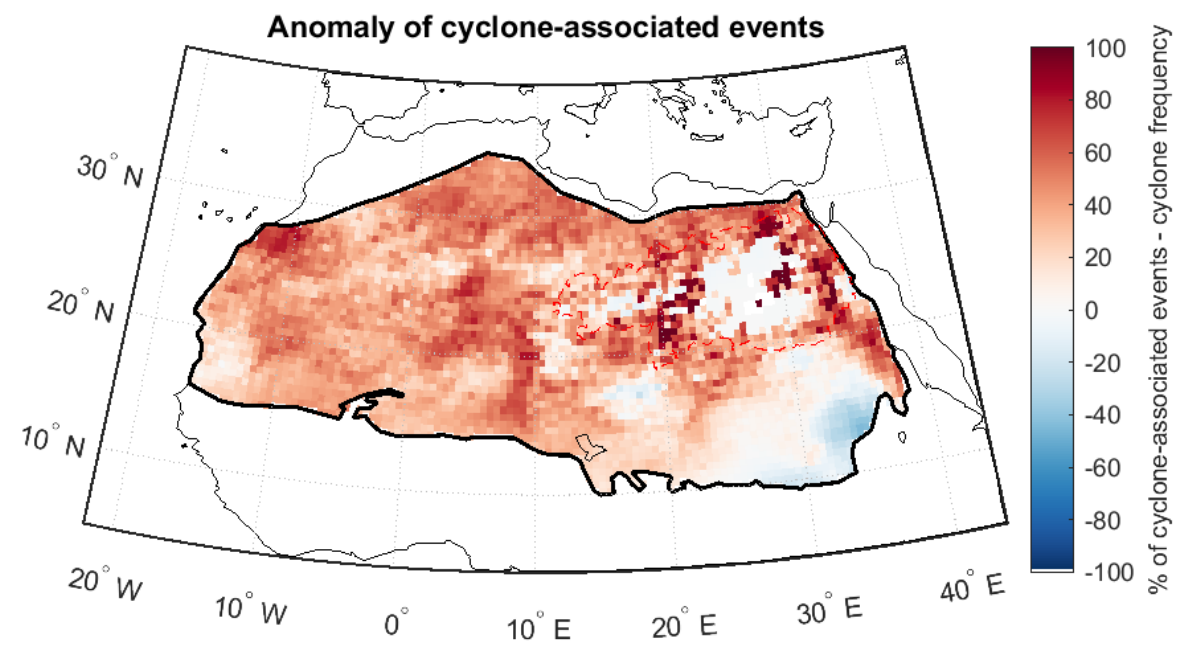
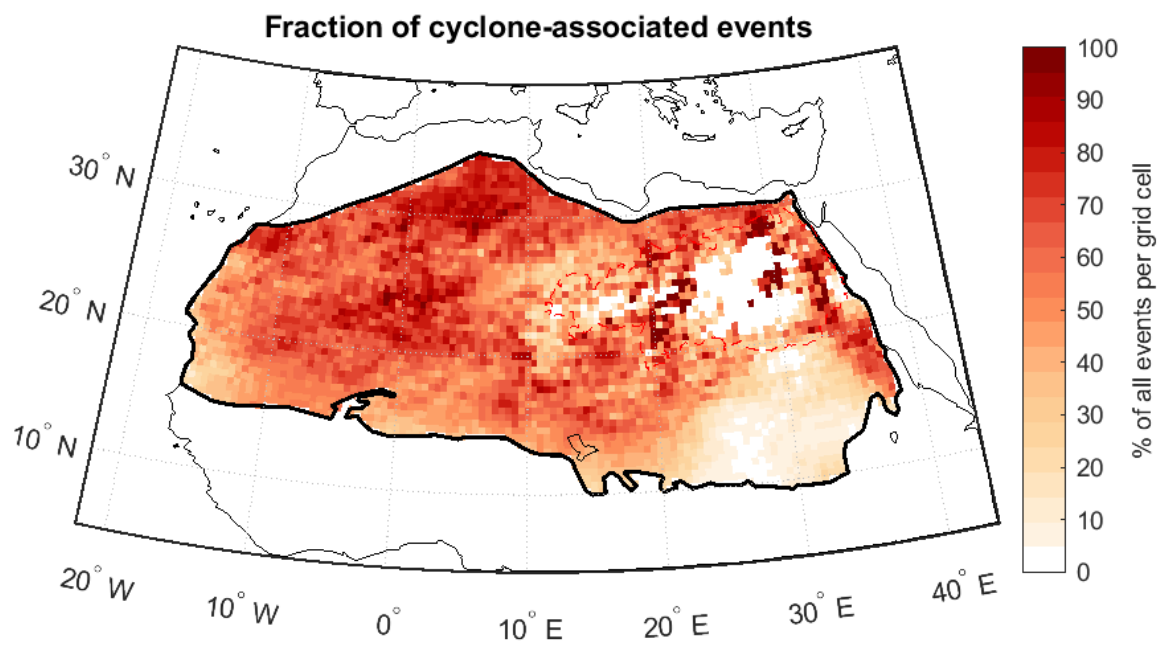
(e)





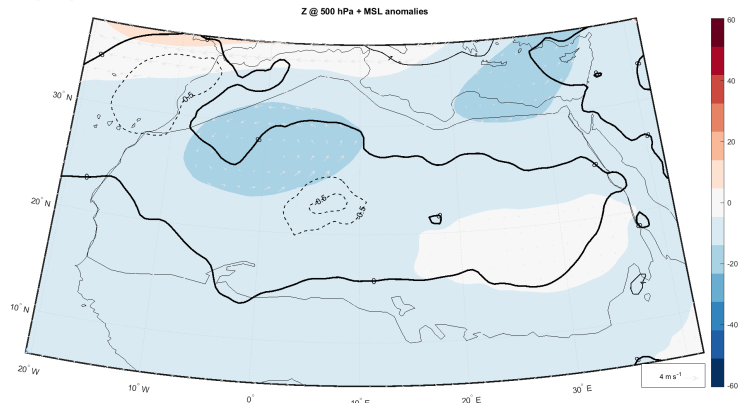
# Fig. 8



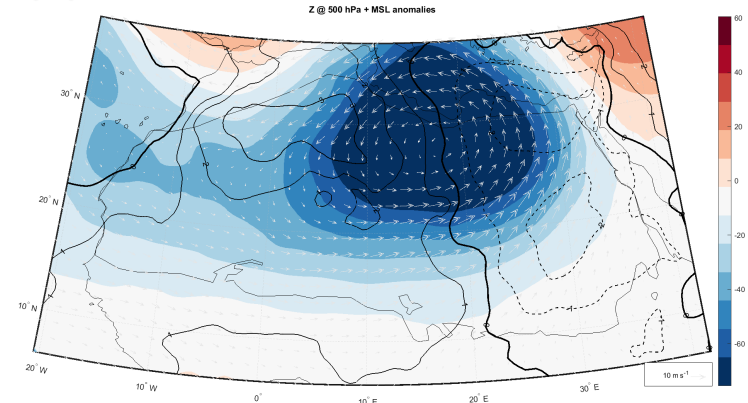


# Fig. 8

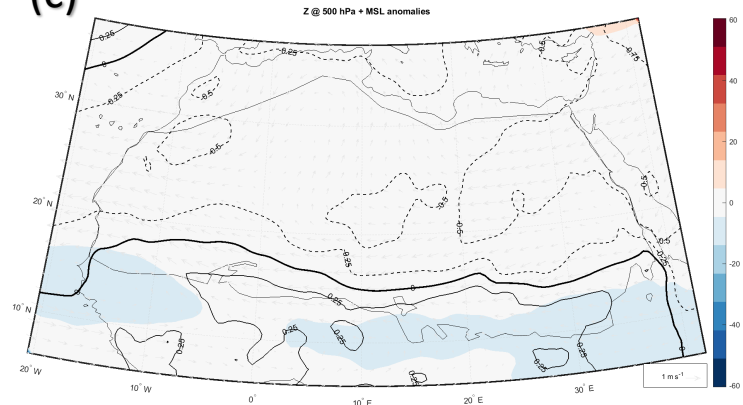
(a)



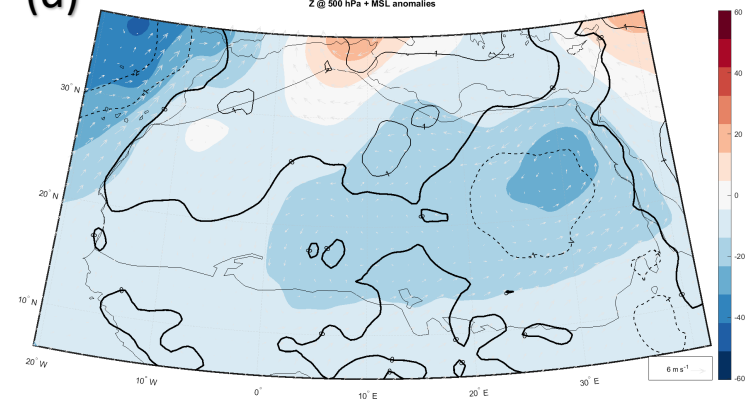
(b)



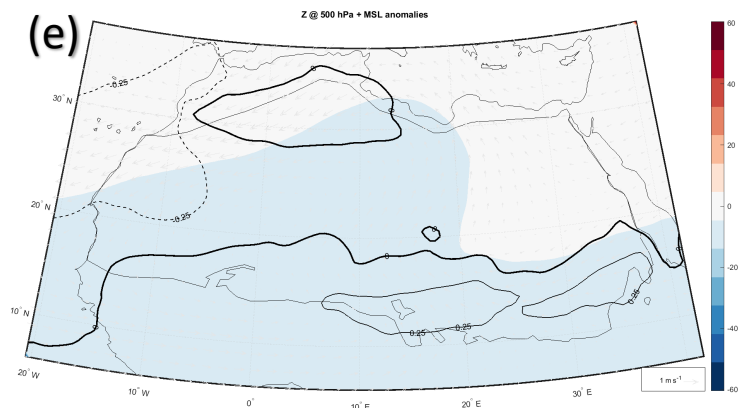
(c)



(d)



(e)



(f)

