

# Supplementary Material

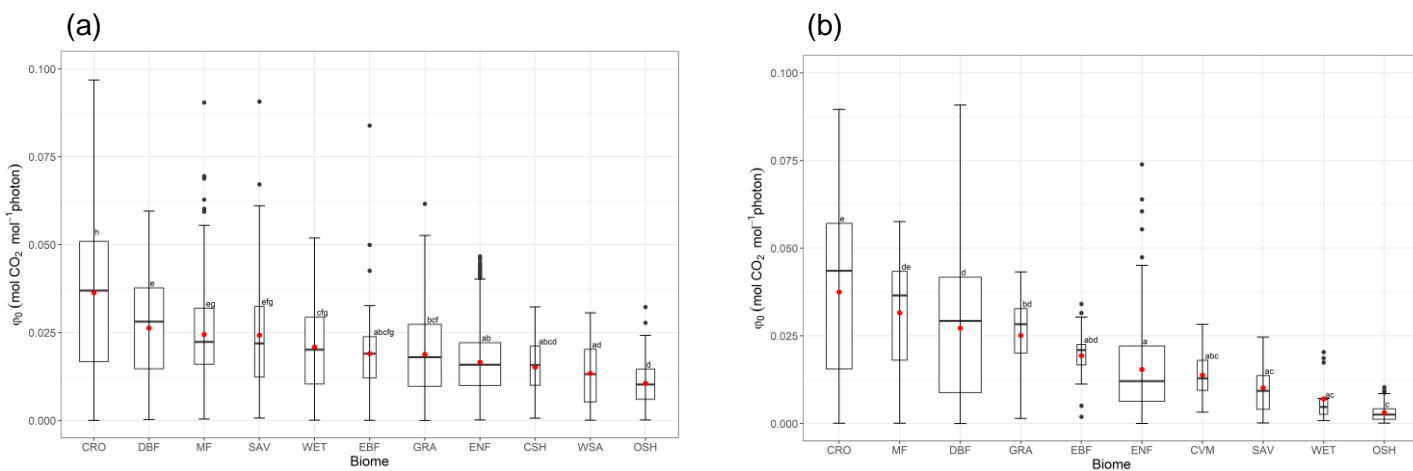


Figure S1. Boxplots of observed intrinsic quantum yield per biome. (a) Fluxnet (212 sites). (b) Ameriflux (53 sites).

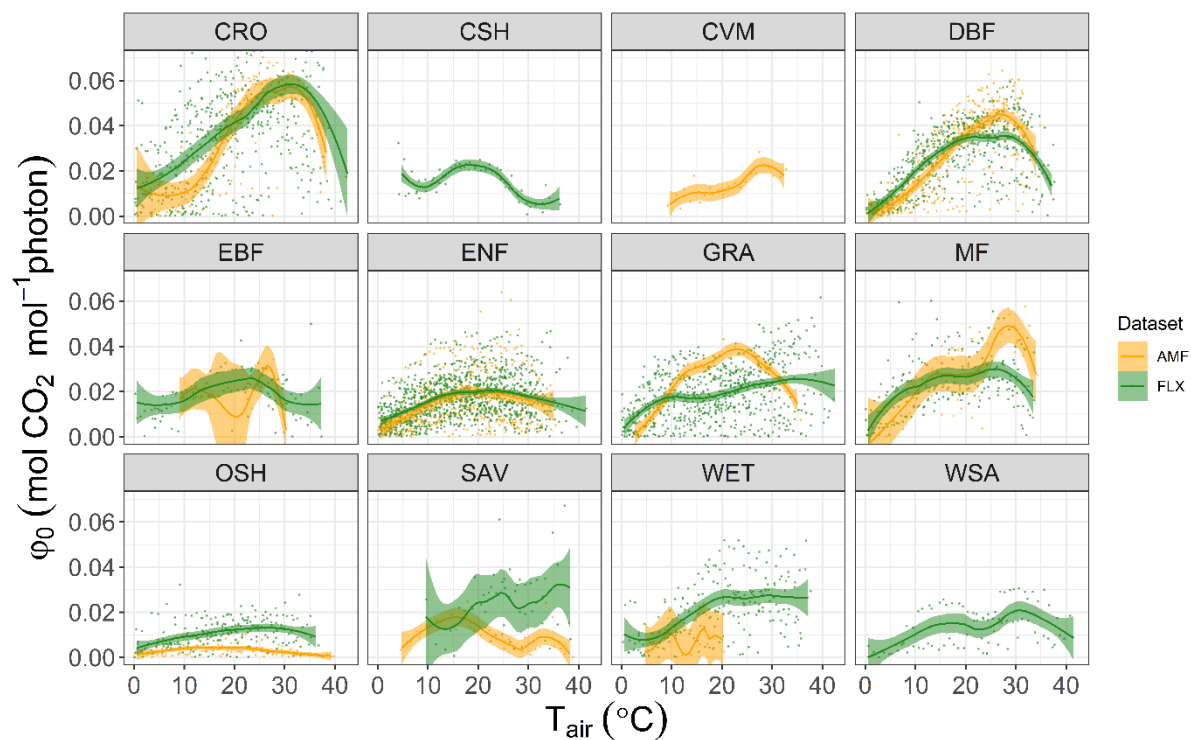


Figure S2. Intrinsic quantum yield response to temperature. All the data pooled and grouped by biome.

## References

- Bernacchi, C. J., Pimentel, C., & Long, S. P. (2003). In vivo temperature response functions of parameters required to model RuBP-limited photosynthesis. *Plant, Cell and Environment*, *26*(9), 1419–1430. <https://doi.org/10.1046/j.0016-8025.2003.01050.x>
- Bibi, A. C., Oosterhuis, D. M., & Gonias, E. D. (2008). Molecular biology and physiology: Photosynthesis, quantum yield of photosystem II and membrane leakage as affected by high temperatures in cotton genotypes. *Journal of Cotton Science*, *12*(2), 150–159.
- June, T., Evans, J. R., & Farquhar, G. D. (2004). A simple new equation for the reversible temperature dependence of photosynthetic electron transport: a study on soybean leaf. *Functional Plant Biology*, *31*(3), 275. <https://doi.org/10.1071/FP03250>
- Rogers, A., Medlyn, B. E., Dukes, J. S., Bonan, G. B., von Caemmerer, S., Dietze, M. C., Kattge, J., Leakey, A. D. B., Mercado, L. M., Niinemets, Ü., Prentice, I. C., Serbin, S. P., Sitch, S., Way, D. A., & Zaehle, S. (2017). A roadmap for improving the representation of photosynthesis in Earth system models. *New Phytologist*, *213*(1), 22–42. <https://doi.org/10.1111/nph.14283>
- Rogers, A., Serbin, S. P., Ely, K. S., & Wullschleger, S. D. (2019). Terrestrial biosphere models may overestimate Arctic CO<sub>2</sub> assimilation if they do not account for decreased quantum yield and convexity at low temperature. *New Phytologist*, *223*(1), 167–179. <https://doi.org/10.1111/nph.15750>
- Skillman, J. B. (2008). Quantum yield variation across the three pathways of photosynthesis: Not yet out of the dark. *Journal of Experimental Botany*, *59*(7), 1647–1661. <https://doi.org/10.1093/jxb/ern029>
- Stocker, B. D., Wang, H., Smith, N. G., Harrison, S. P., Keenan, T. F., Sandoval, D., Davis, T., & Prentice, I. C. (2020). P-model v1.0: an optimality-based light use efficiency model for simulating ecosystem gross primary production. *Geoscientific Model Development*, *13*(3), 1545–1581. <https://doi.org/10.5194/gmd-13-1545-2020>
- Yin, X., Belay, D. W., Van Der Putten, P. E. L., & Struik, P. C. (2014). Accounting for the decrease of photosystem photochemical efficiency with increasing irradiance to estimate quantum yield of leaf photosynthesis. *Photosynthesis Research*, *122*(3), 323–335. <https://doi.org/10.1007/s11120-014-0030-8>
- Zhang, L.-M., Yu, G.-R., Sun, X.-M., Wen, X.-F., Ren, C.-Y., Fu, Y.-L., Li, Q.-K., Li, Z.-Q., Liu, Y.-F., Guan, D.-X., & Yan, J.-H. (2006). Seasonal variations of ecosystem apparent quantum yield ( $\alpha$ ) and maximum photosynthesis rate ( $P_{max}$ ) of different forest ecosystems in China. *Agricultural and Forest Meteorology*, *137*(3–4), 176–187. <https://doi.org/10.1016/j.agrformet.2006.02.006>