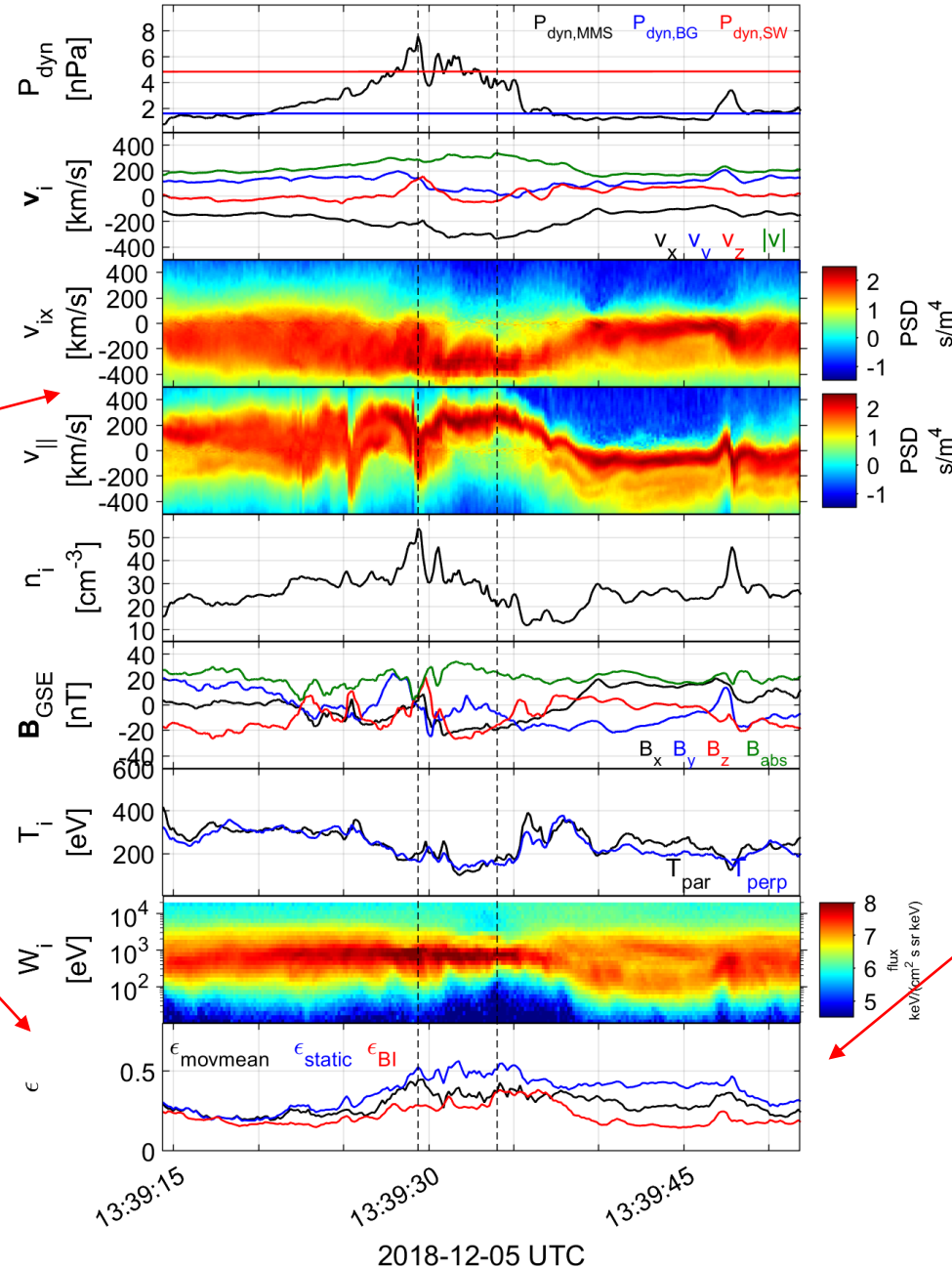


Original abstract

Velocity distribution functions and non-Maxwellianity of magnetosheath jets using MMS

Read about the kinetic structure of jets

Raptis et al (2022a,2022b)



Question:
Should we consider using distribution functions for determining when there is a “jet” or a significant variation with respect to the background ?

- Notice the deviation from:**
- (a) Moving mean distribution
 - (b) Static background distribution
 - (c) Model Bi-Maxwellian with the same plasma moments

$\epsilon \in [0, 1]$
0 \rightarrow Zero deviation
1 \rightarrow Maximum deviation

Read about non-Maxwellianity parameter (i.e., ϵ_{BI}):

Graham, D. B., et al. (2021). Non-Maxwellianity of Electron Distributions Near Earth's Magnetopause. JGR