



NÚCLEO DE APOIO À PESQUISA  
PATRIMÔNIO GEOLÓGICO E GEOTURISMO  
UNIVERSIDADE DE SÃO PAULO

# PROMOTION OF YOSEMITE NATIONAL PARK GEOHERITAGE: VALUING GEODIVERSITY IN A PROTECTED AREA

Karina Ibanez<sup>1 2</sup>, Greg M. Stock<sup>3</sup>, and Maria da Glória Motta Garcia<sup>1 2</sup>

1: Institute of Geosciences of University of São Paulo, Brazil; 2: Centre for Research Support on Geological Heritage and Geotourism (GeoHereditas)  
3: US National Park Service, Yosemite National Park, El Portal, California

karina.ibanez@usp.br



## MOTIVATION AND CONTEXT

National parks are protected areas that feature rich biodiversity AND geodiversity, presenting potential geoscientific values



Yosemite National Park (YNP) in California comprises key sites for understanding the formation of granitic rocks and glacial features of the Sierra Nevada Batholith

Geoheritage is part of the natural heritage of a certain area constituted by exceptional geodiversity features



Valuing, managing, preserving and promoting Geoheritage Sites - connection between people, landscape and Earth history

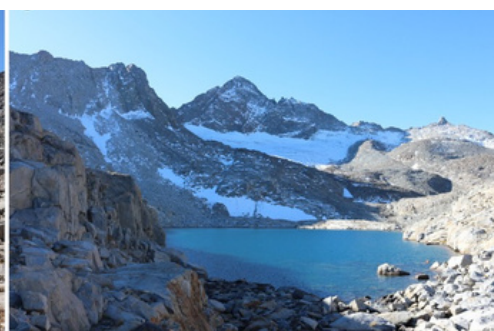
Characterization: bibliographic review of Yosemite geology and field work

Promoting geoheritage in a National Park of global geological relevance such as YNP is essential for the valuing of geodiversity - and thus nature as a whole

Lyell and Maclure Glaciers



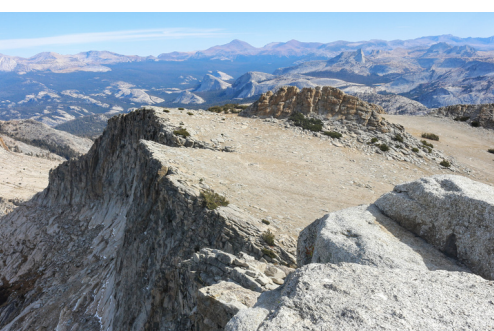
May Lake metamorphic rocks



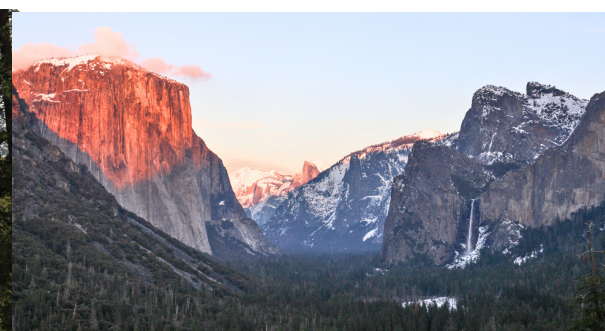
Mt. Hoffman



Sentinel Rock

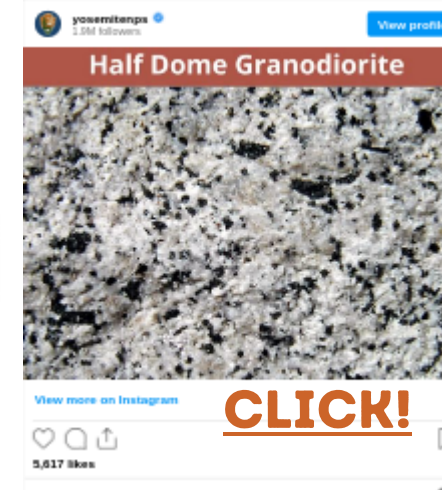
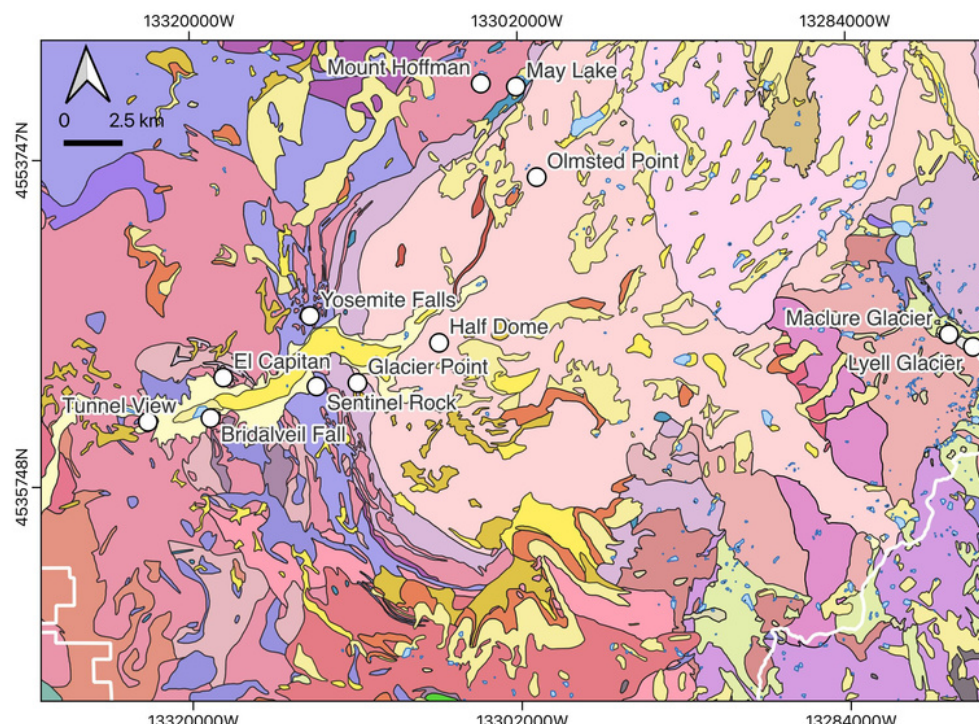


Tunnel View



El Capitan - Scientific, environmental, cultural, educational, and geotouristic values

## YNP GEOHERITAGE SITES



## SOCIAL MEDIA OUTREACH

Official NPS Social Media for the dissemination of geosciences and promotion of geoheritage

## FINAL REMARKS

Characterization and selection of geoheritage sites is the first step for the management and promotion of the geoheritage. It can assist in managing resources, assessing vulnerability, protection, and offering education and outreach actions. This work can aid further YNP geoheritage plans