

PICO Spot 1.4



# ELECTRICAL CONDUCTORS BENEATH MT. ERCIYES IMAGED BY THREE-DIMENSIONAL MODELING OF MAGNETOTELLURICS (MT) DATA

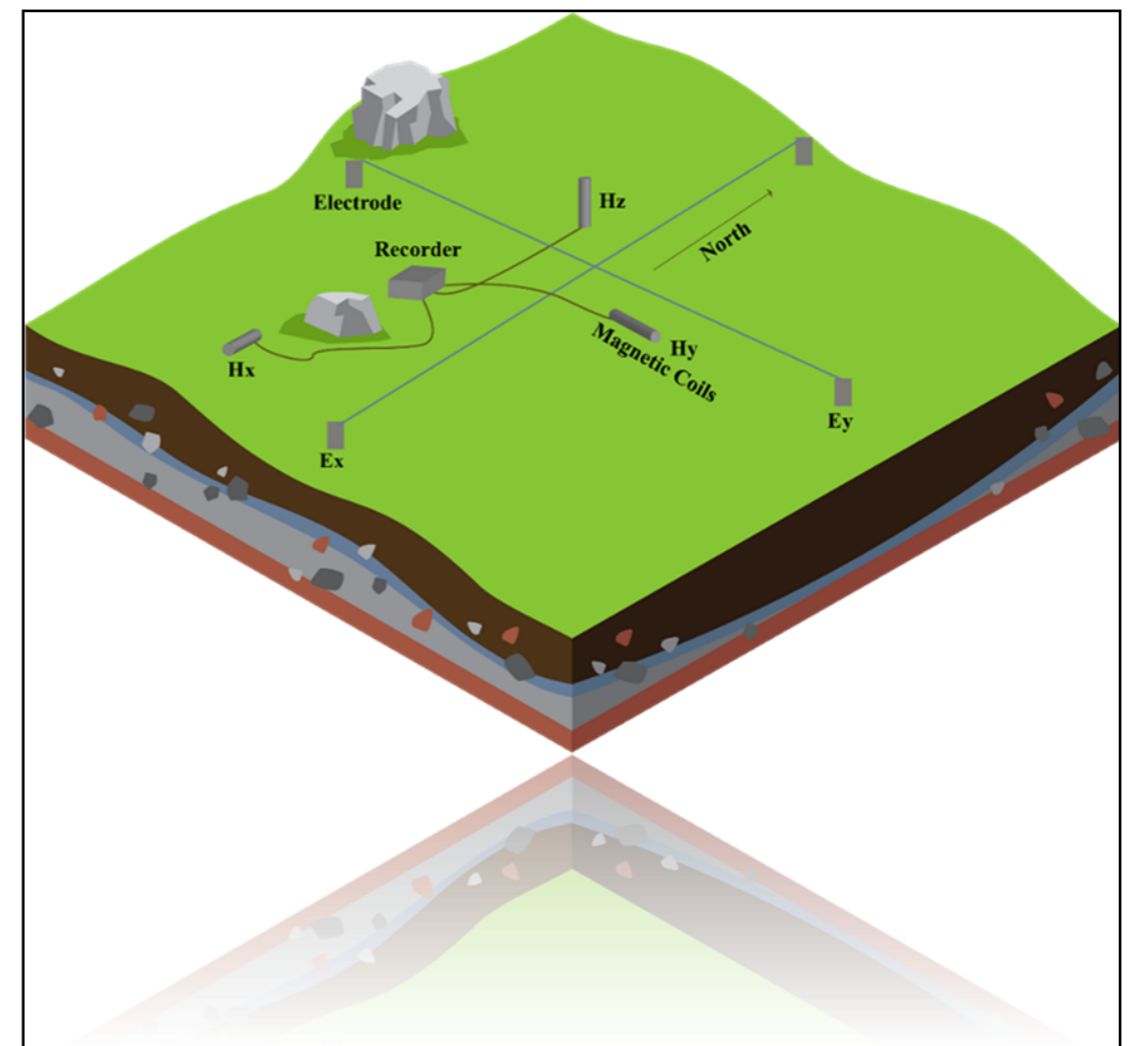


**R.YAZICI**, S.B. TANK, S.ÜNER, M.KARAŞ  
(2024)

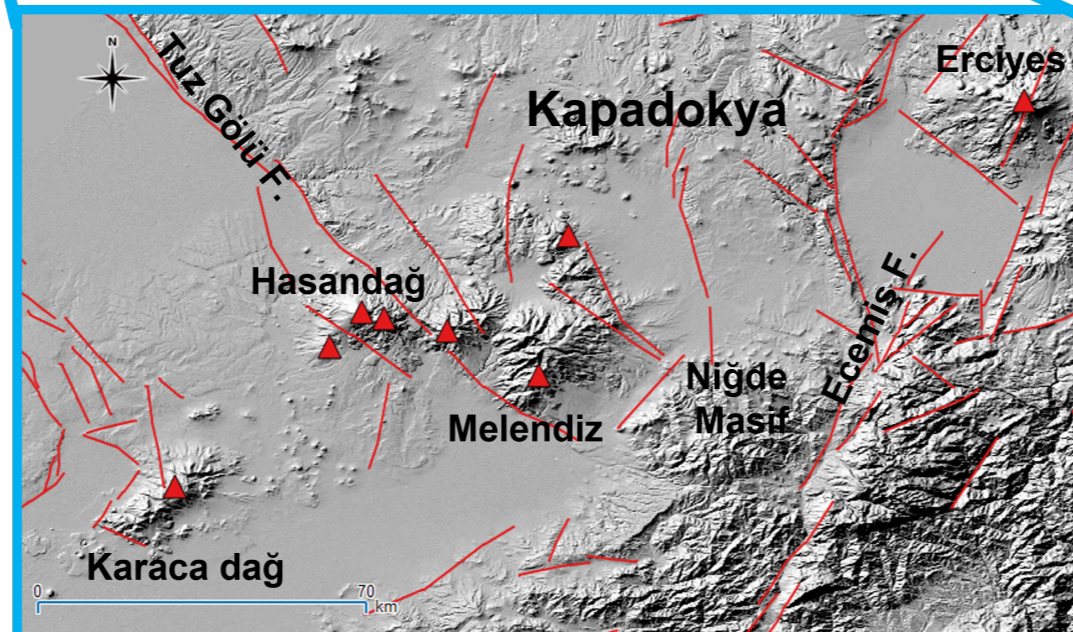
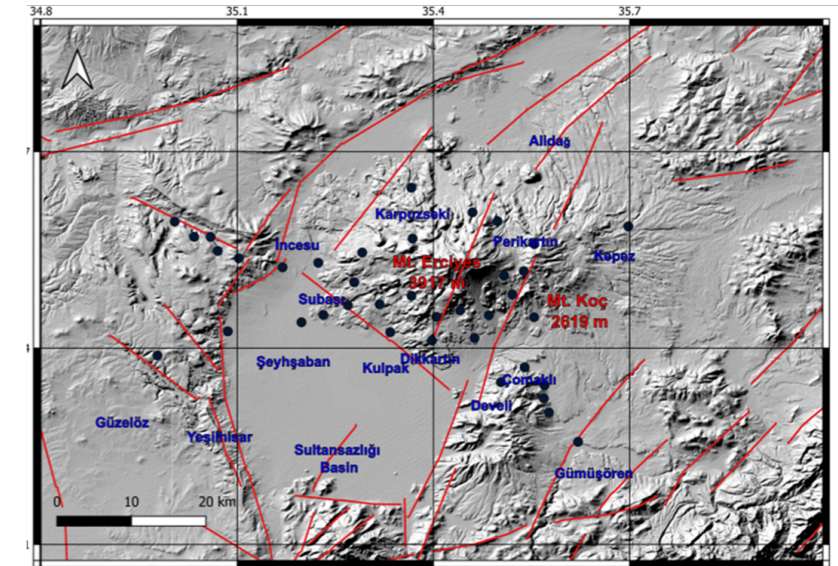
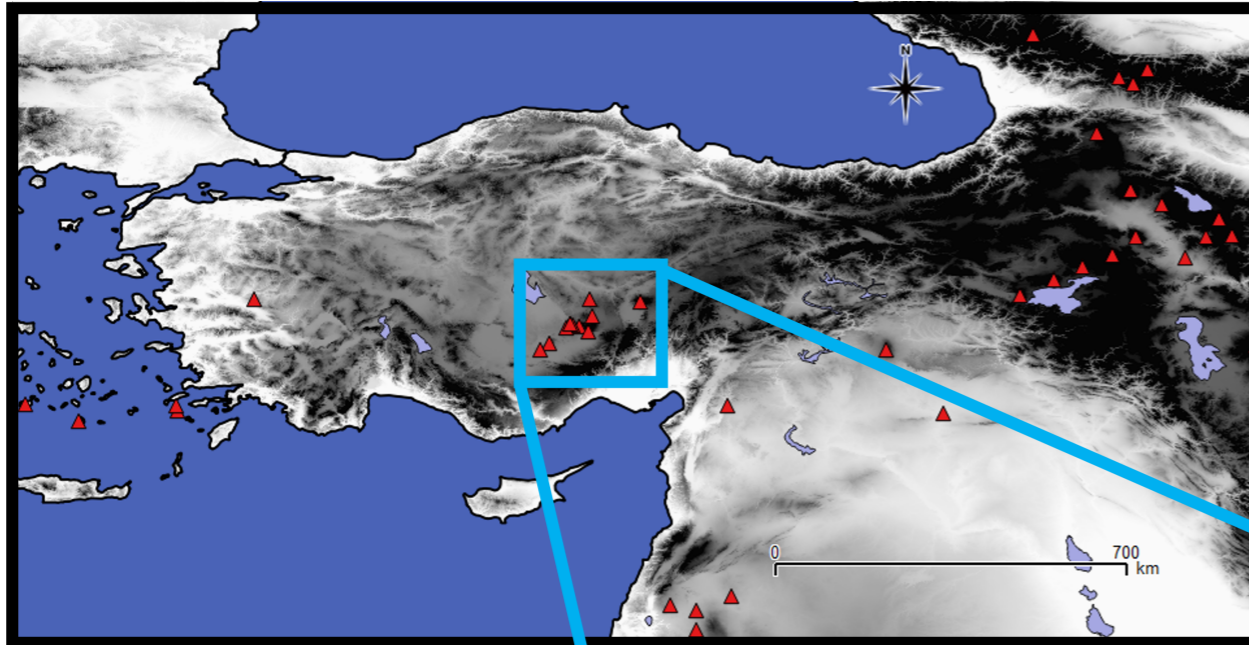


## THE METHOD

- \* Magnetotelluric Method (MT)
- \* Natural source electromagnetic method
- \* 38 soundings
- \* 5 channels



## MT. ERCIYES STRATOVOLCANO



- \* The highest (3917 m)
- \* Most voluminous (3300 km<sup>3</sup>)

# MODELING

