

VARIABILITY OF TOTAL COLUMN CO₂, CH₄ AND CO IN THE EASTERN MEDITERRANEAN AND MIDDLE EAST (EMME) REGION: INSIGHTS FROM THE TCCON NICOSIA AND AIRCORE

EGU24 General Assembly, 15-19 April 2024, Vienna, Austria



Rousogeous C.¹, Petri C.², Qu  h   P.Y.¹, Desservettaz M.¹, Warneke T.²,
Laemmel Th.^{3,4}, Ramonet M.³, Notholt J.², Paris J-D.^{1,3}, Vrekoussis M.^{1,2}, Sciare J.¹

¹: Climate and Atmosphere Research Centre (CARE-C), The Cyprus Institute (Cyl), Cyprus

²: Institute of Environmental Physics, IUP, University of Bremen, Germany

³: LSCE/IPSL, CEA-CNRS-UVSQ, Universit   Paris Saclay, Gif-sur-Yvette, France

⁴: Now at Department of Chemistry, Biochemistry and Pharmaceutical Sciences, University of Bern, Switzerland

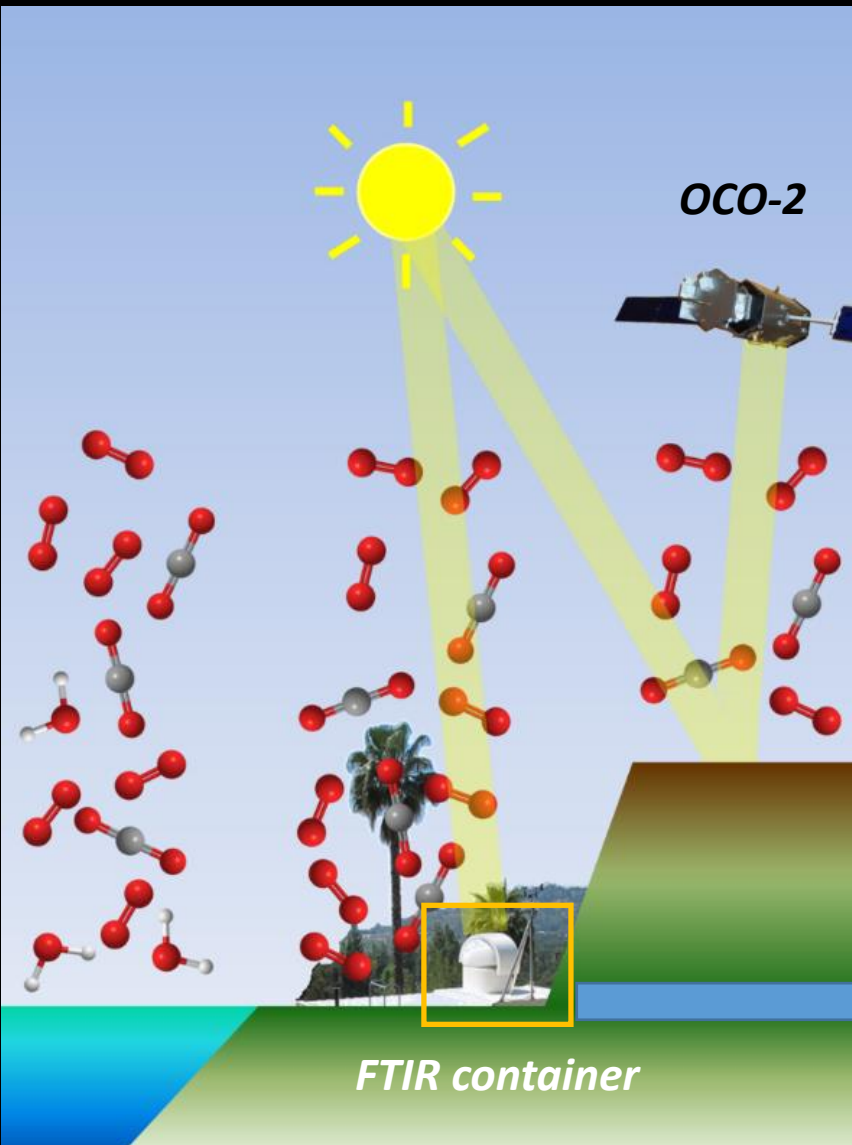


Supplementary Material

The Total Carbon Column Observing Network

How does it work?

Ground-based Fourier Transform Spectrometers



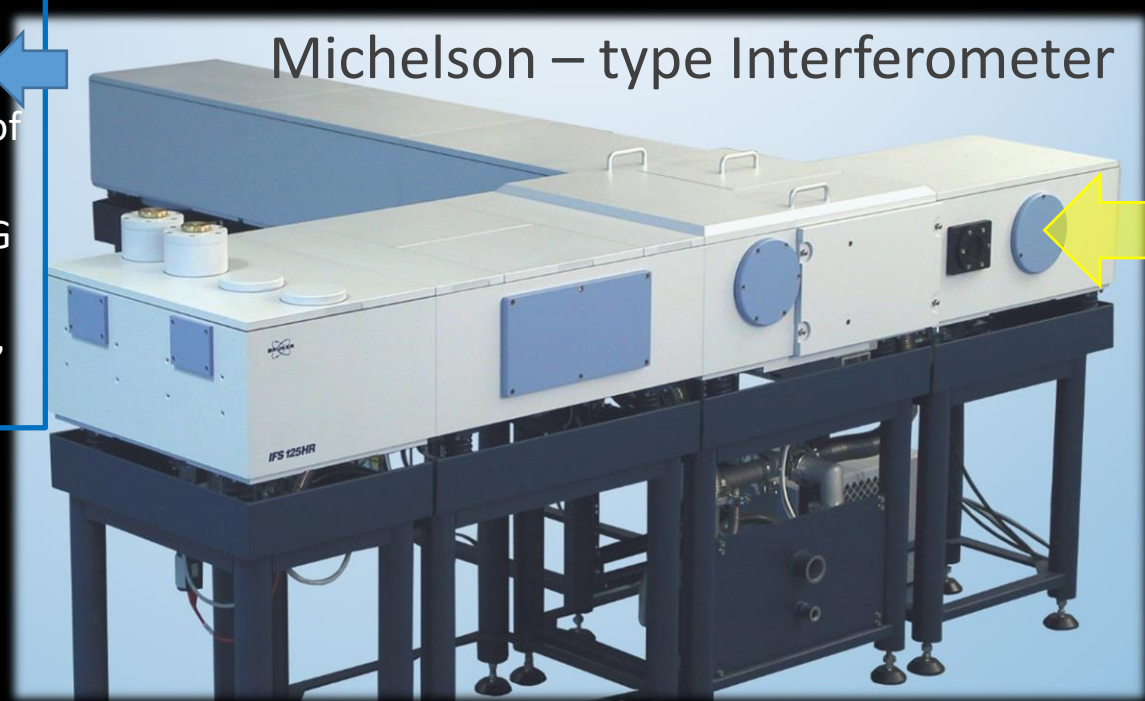
OCO-2



Column-averaged dry-air mole fractions (DMFs) of main Greenhouse gases, X_G for gas G

CO_2 , CH_4 , N_2O , HF, CO, H_2O , HDO

Michelson – type Interferometer



Bruker IFS 125HR

Additional Information – Theoretical Background

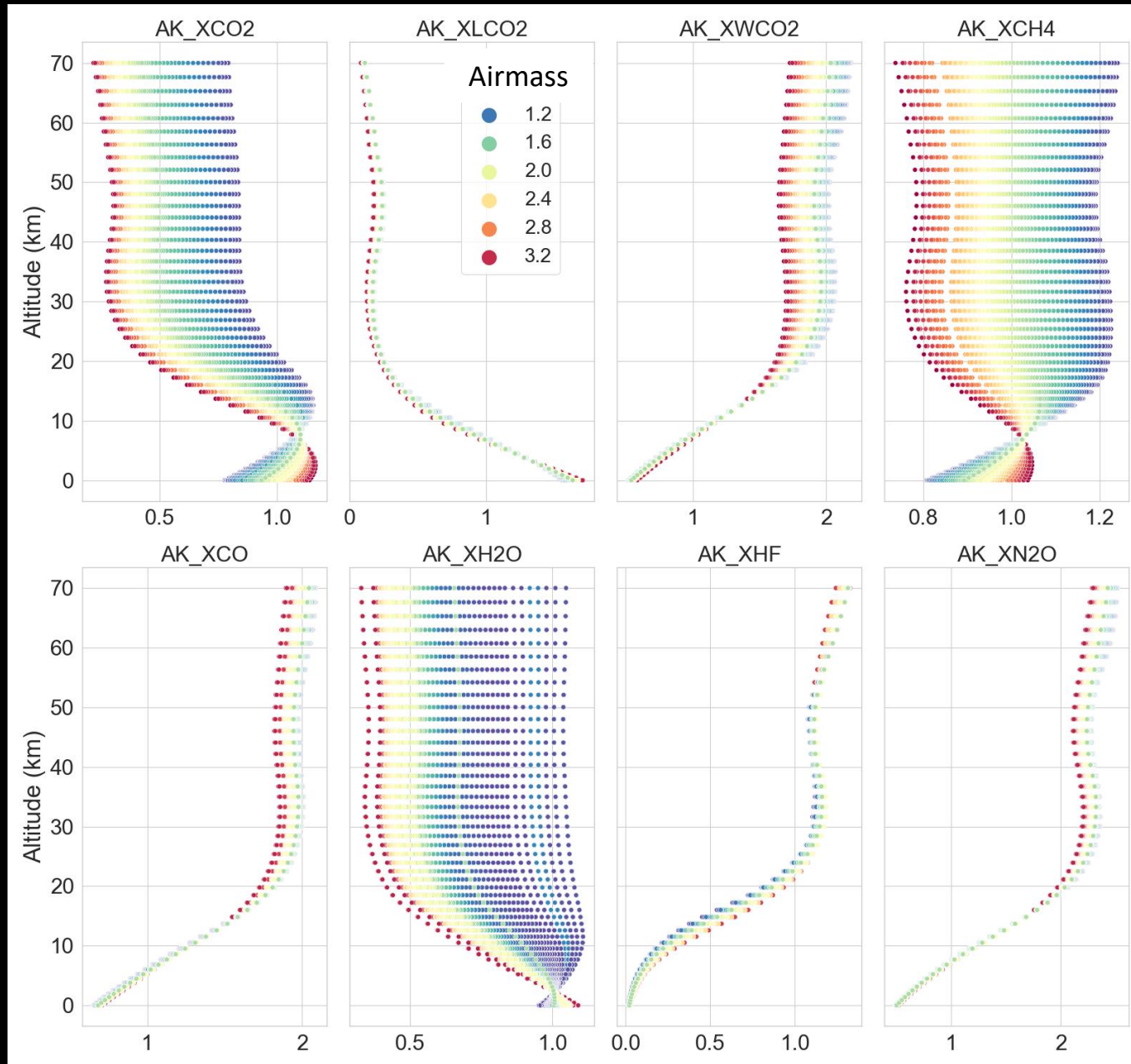
Averaging Kernels (AK)

- Represent the sensitivity of the instrument per altitude and airmass (related to Solar Zenith Angle).

AK > 1.0 high sensitivity

AK < 1.0 reduced sensitivity

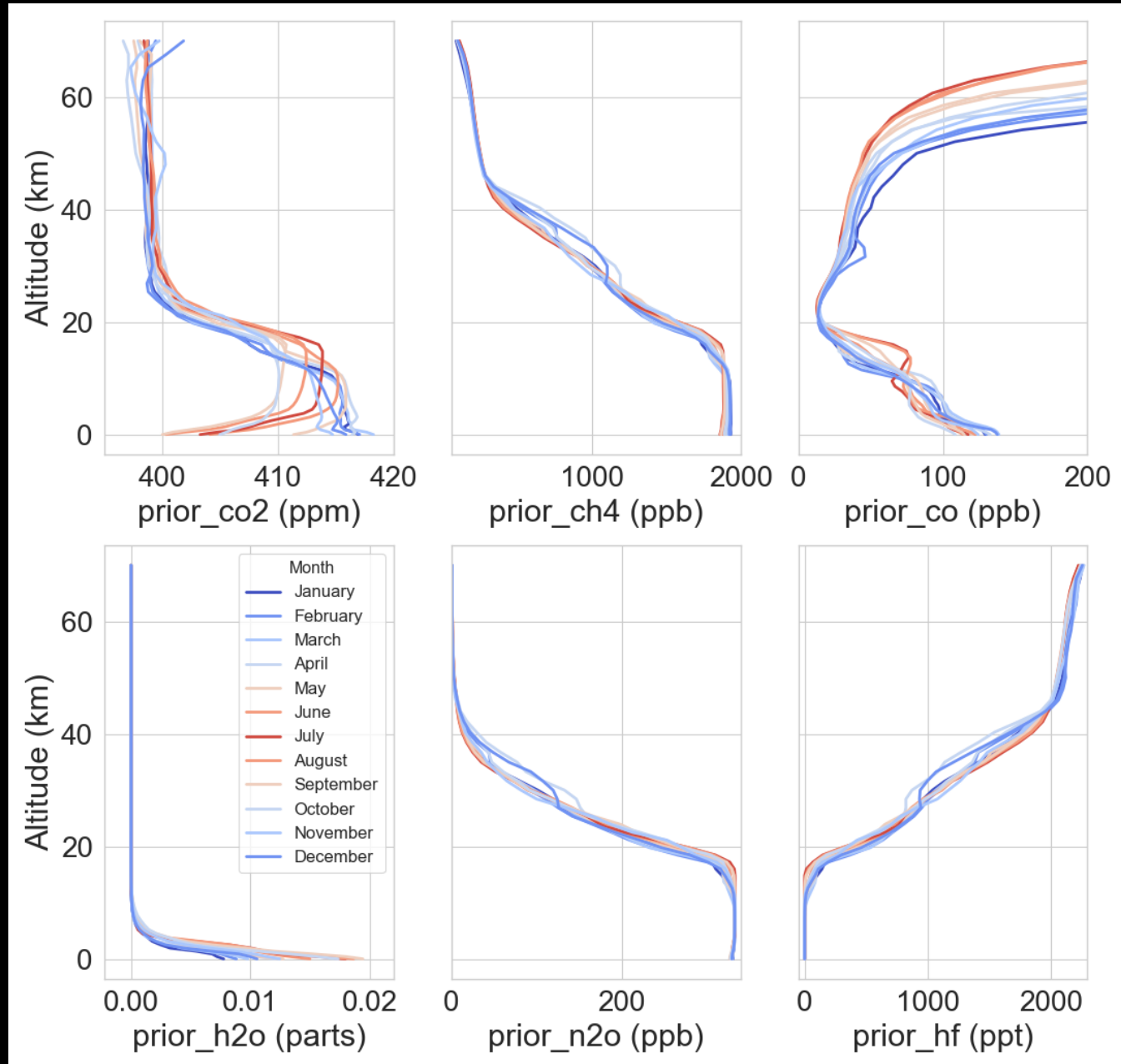
- A set of AK are calculated per measurement, per gas window.



Additional Information – Theoretical Background

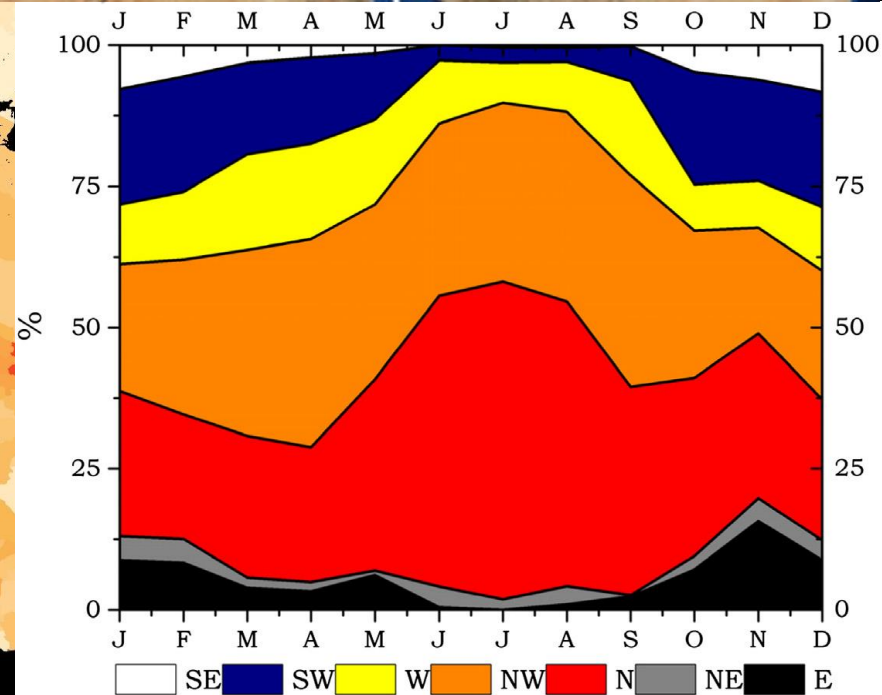
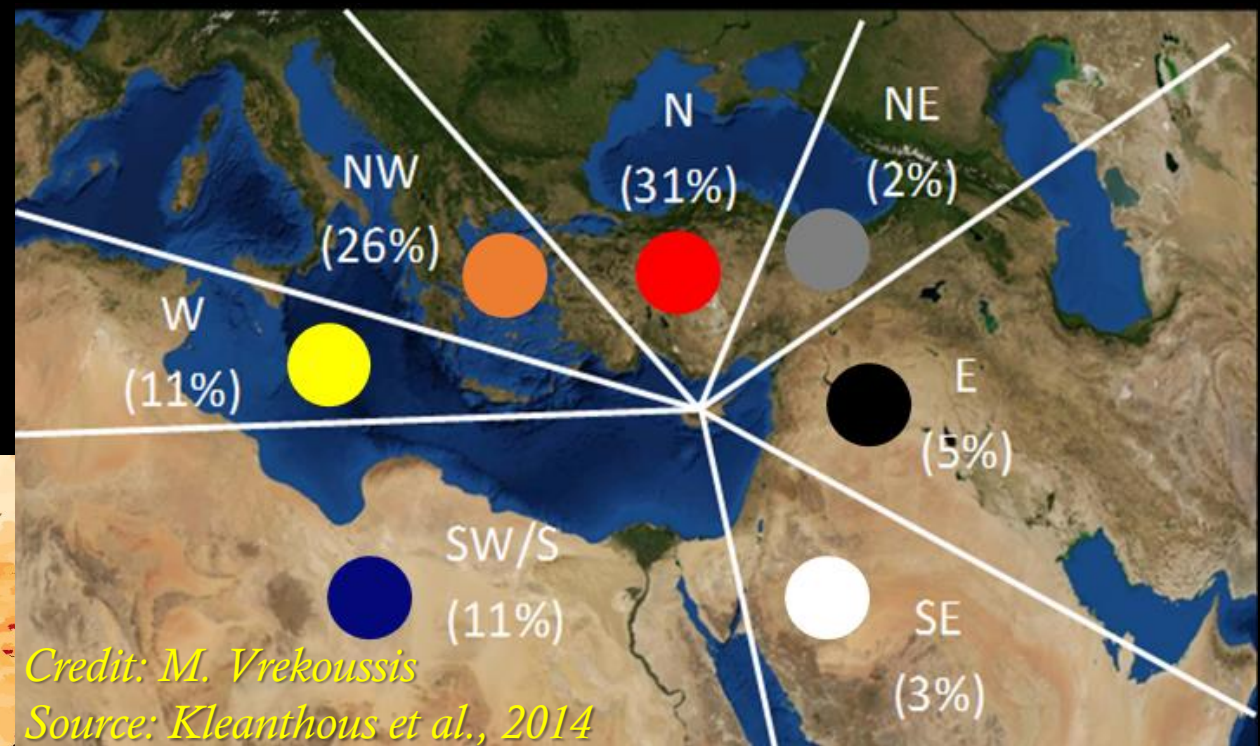
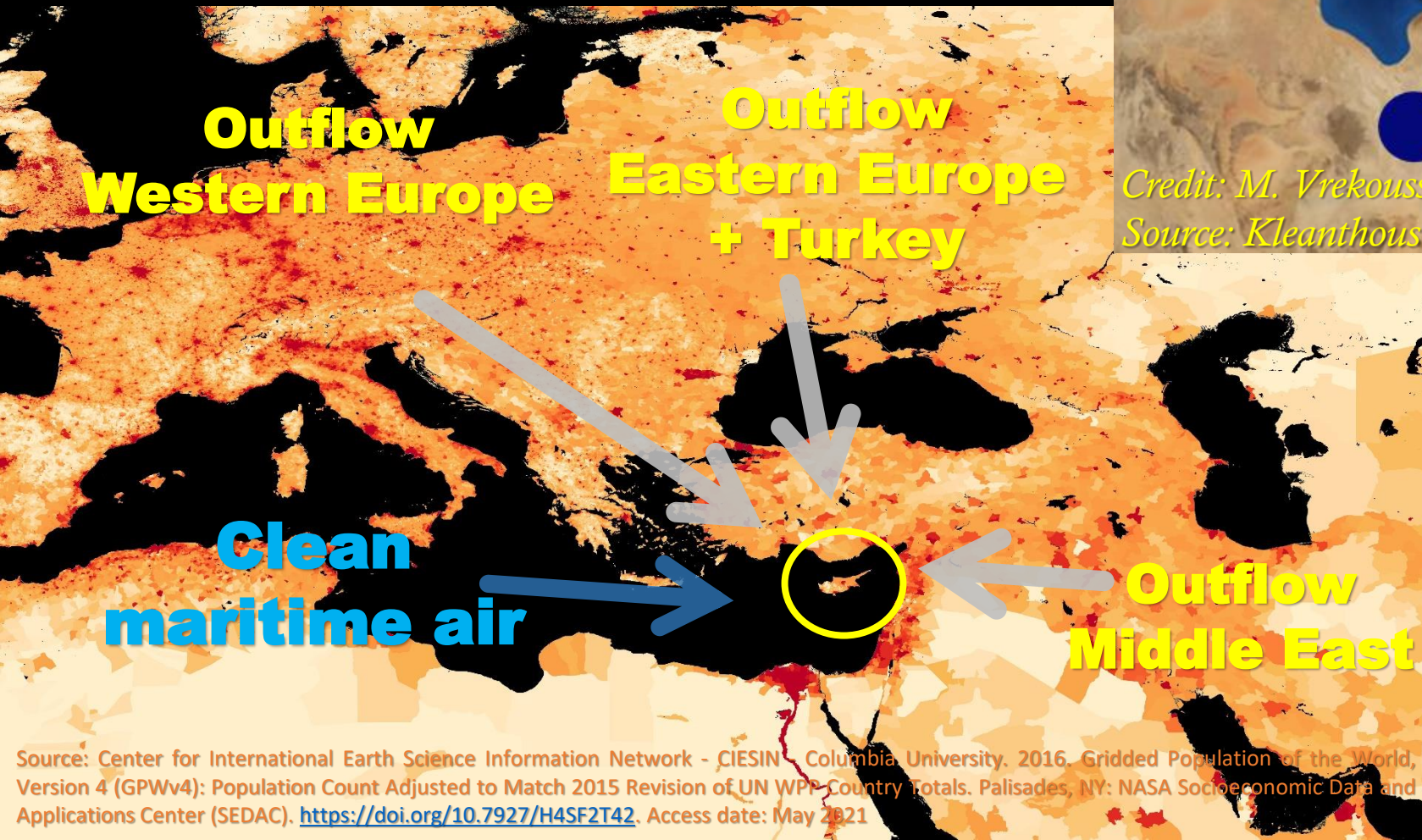
Priors

- A modelled vertical gas profile (our initial “guess”).
- Unique per site, with a 3-hourly resolution.
- Uses meteorological reanalysis product from GEOS FP-IT.



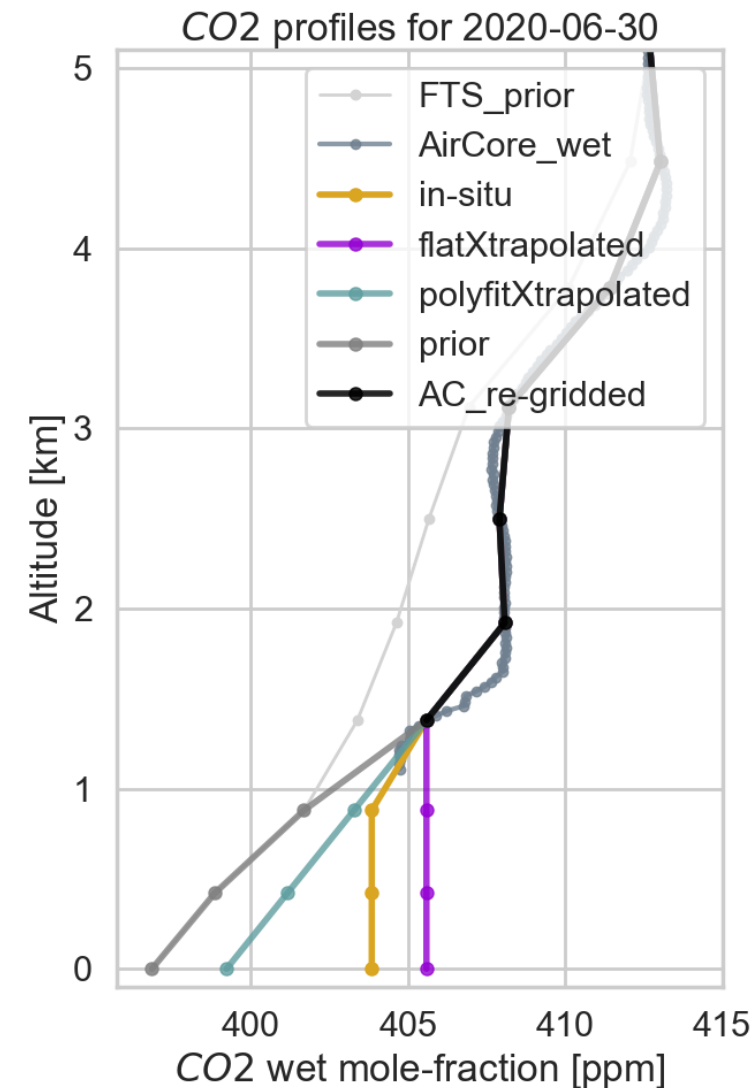
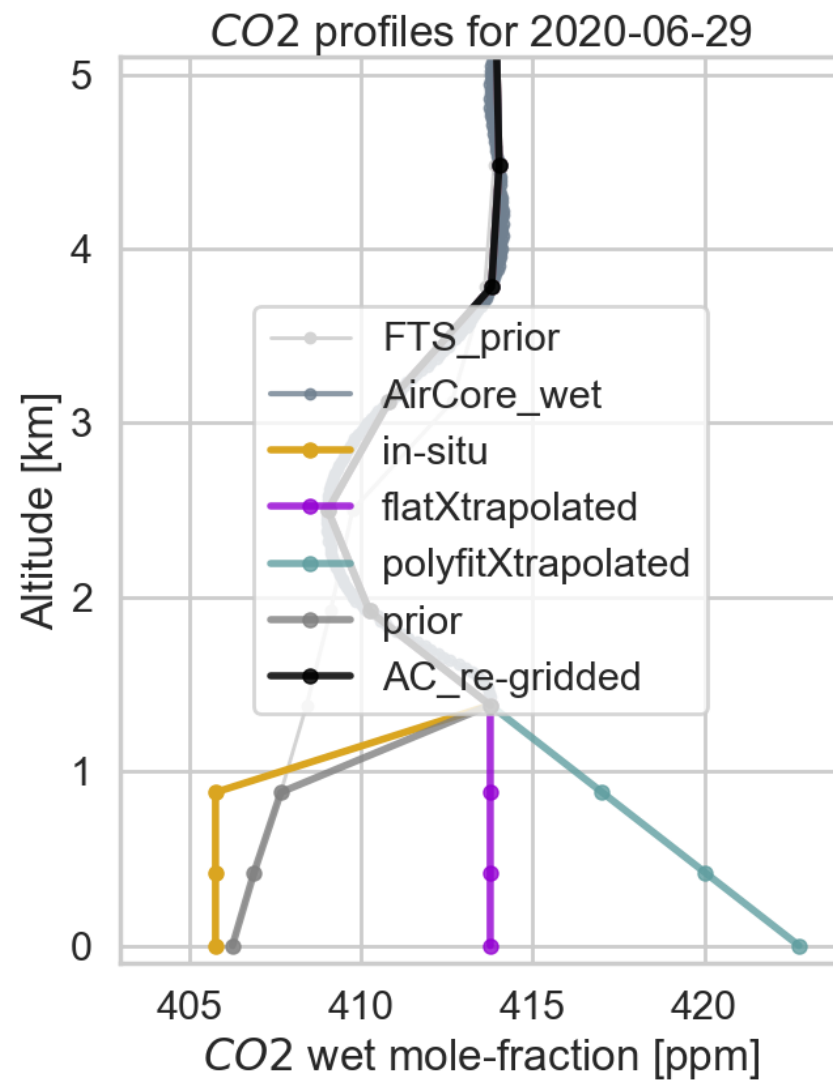
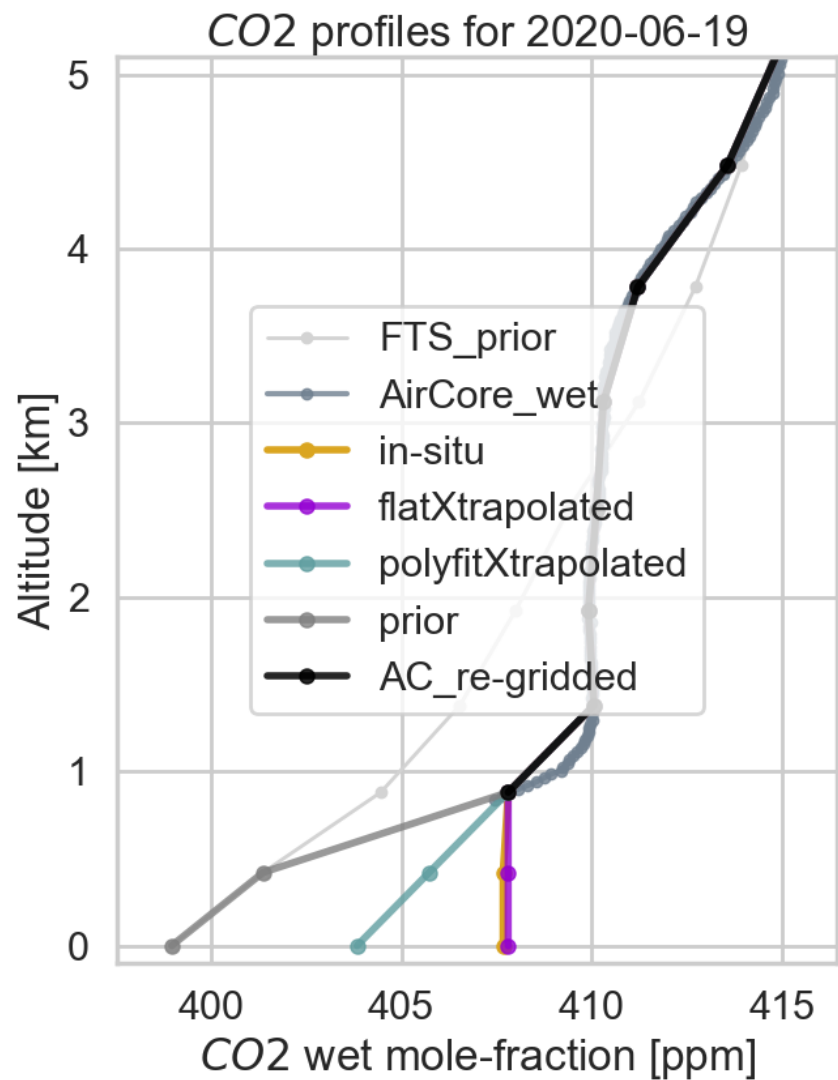
Goddard Earth Observing System Forward Product for Instrument Teams (GEOS FP-IT) reanalysis product, Lucchesi, 2015

Regional Boundary Layer Air Masses in Cyprus & Seasonal Variability



Source: Center for International Earth Science Information Network - CIESIN - Columbia University. 2016. Gridded Population of the World, Version 4 (GPWv4): Population Count Adjusted to Match 2015 Revision of UN WPP Country Totals. Palisades, NY: NASA Socioeconomic Data and Applications Center (SEDAC). <https://doi.org/10.7927/H4SF2T42>. Access date: May 2021

Why such discrepancy on the 29th? (But not only...)



The complete profiles...

