

# Depth dependent coastal Marine Heatwaves: a case study in Shark Bay, Western Australia

Yuwei Hu, Chunzai Wang

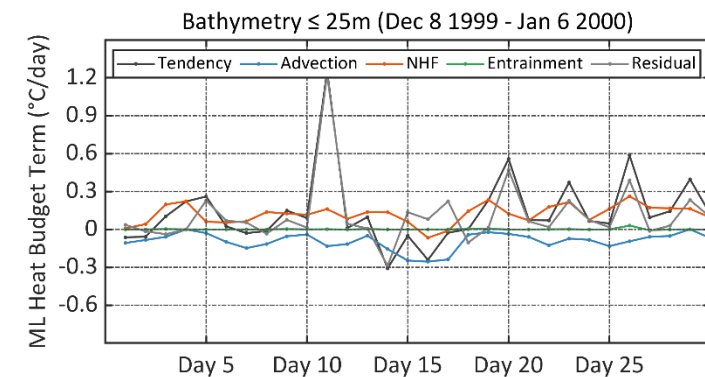
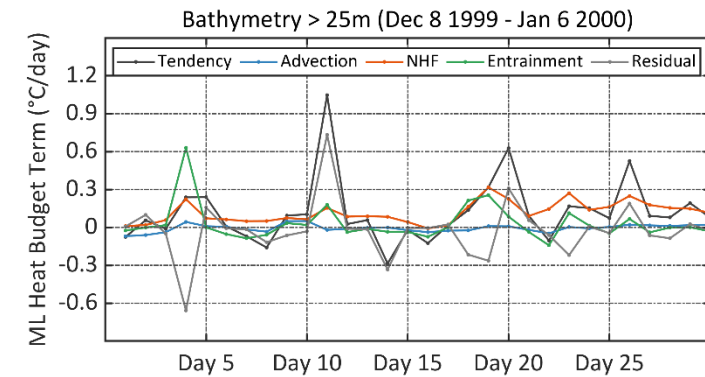
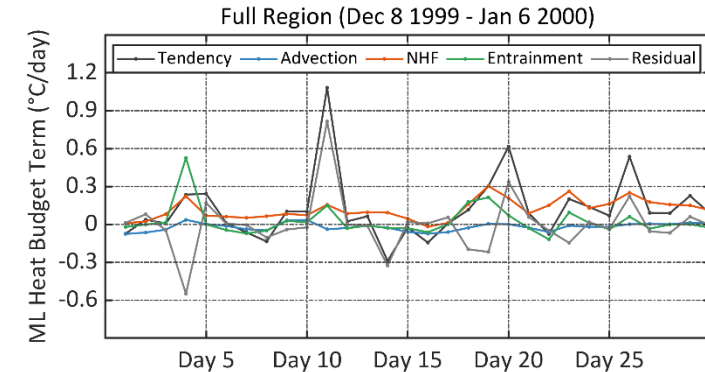
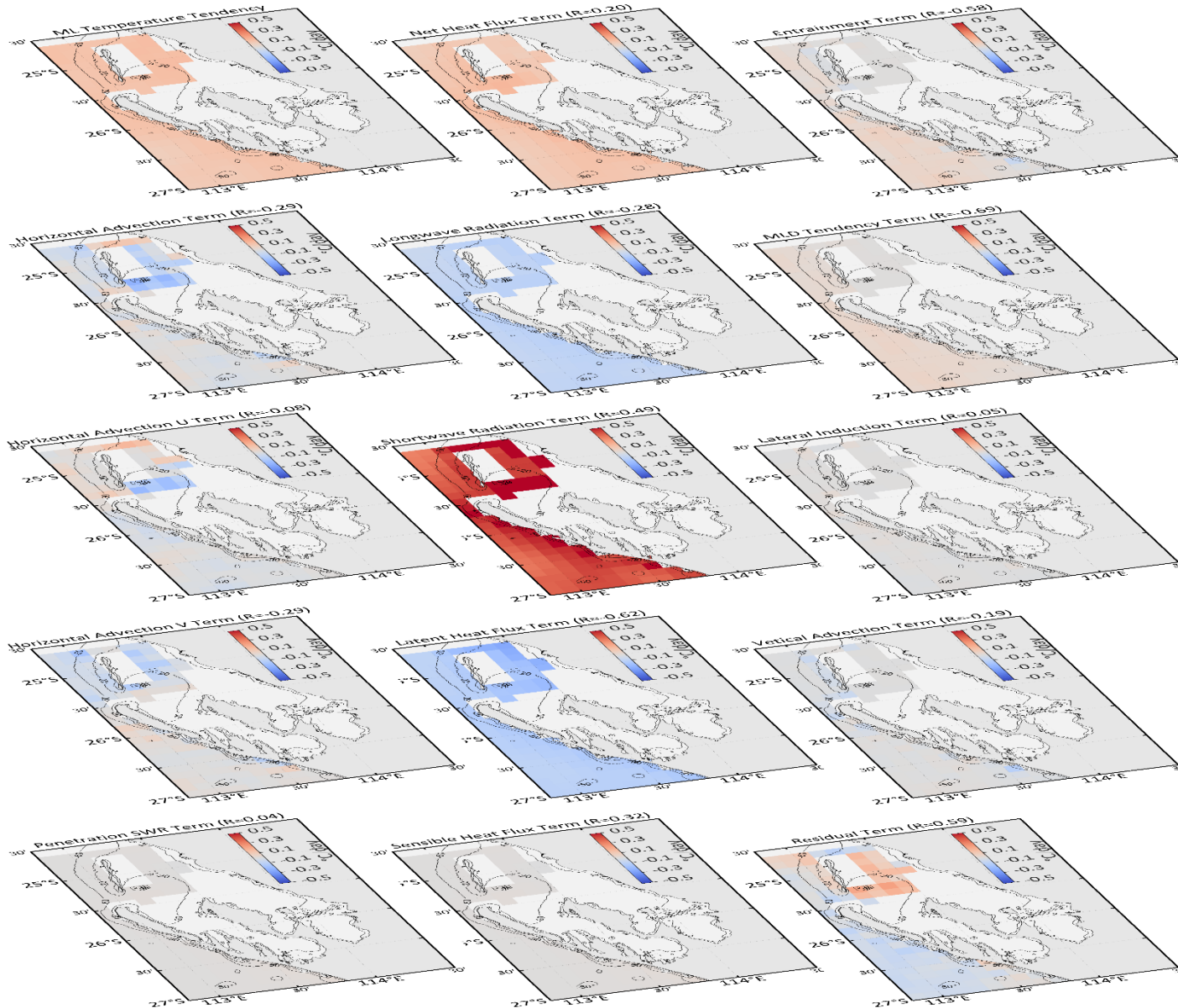
[hu.yuwei@scsio.ac.cn](mailto:hu.yuwei@scsio.ac.cn)

State Key Laboratory of Tropical Oceanography,  
South China Sea Institute of Oceanology, Chinese Academy of Sciences,  
Guangzhou, China

# Mixed Layer Heat Budget

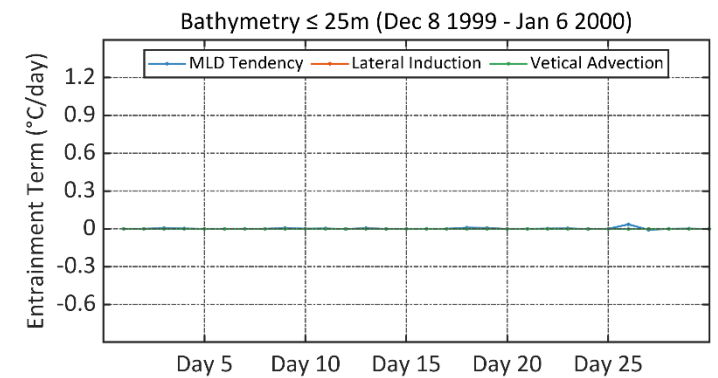
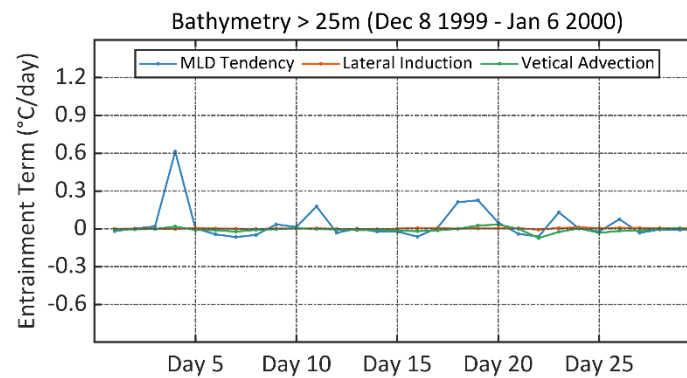
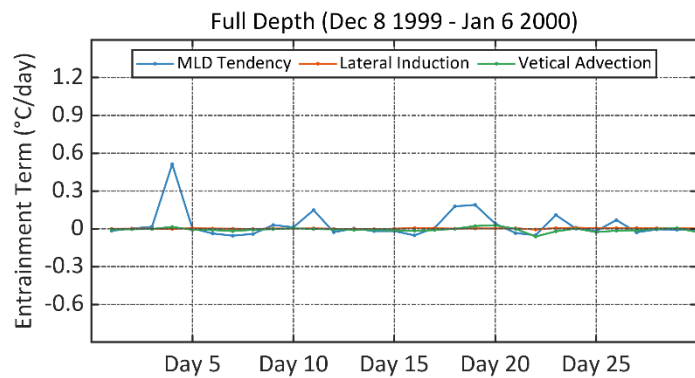
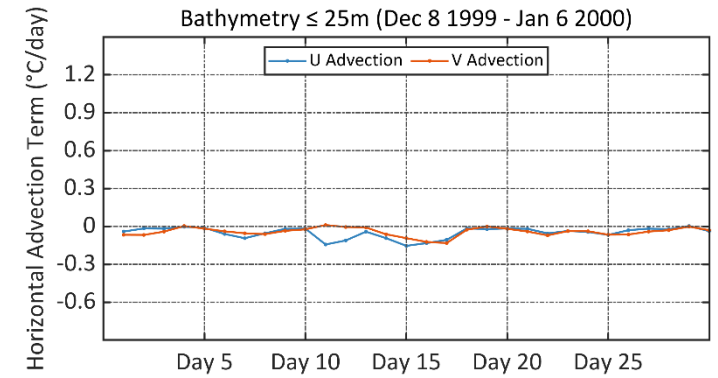
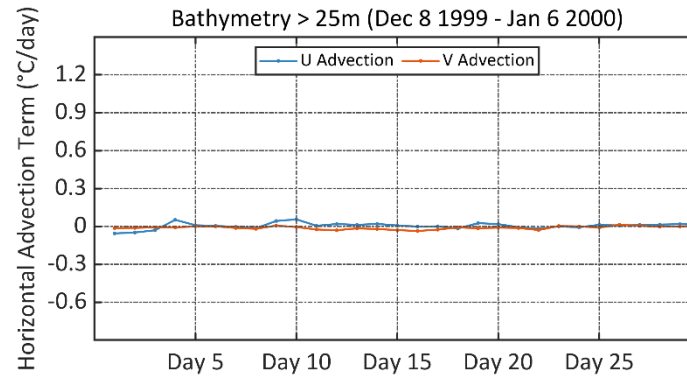
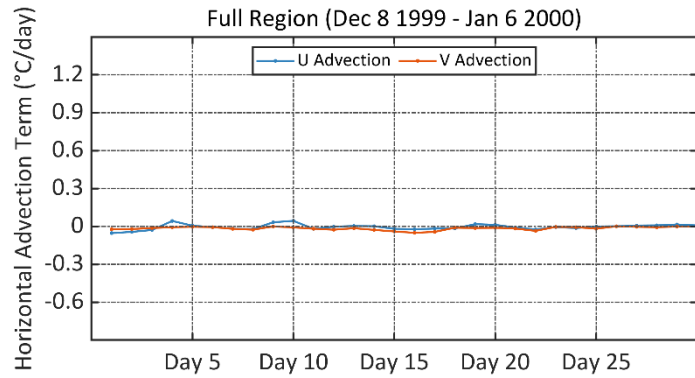
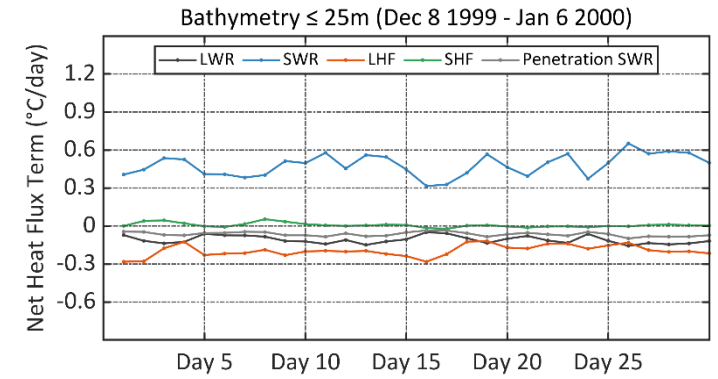
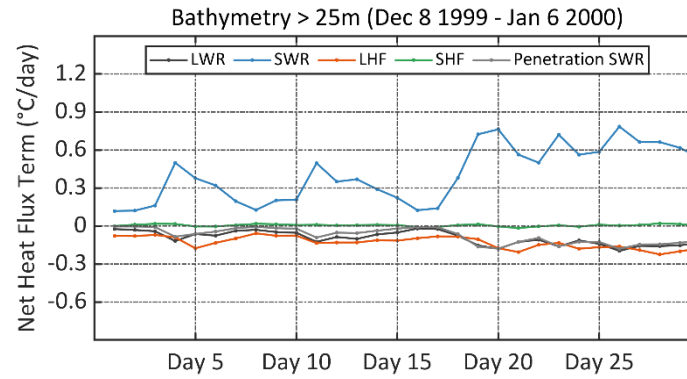
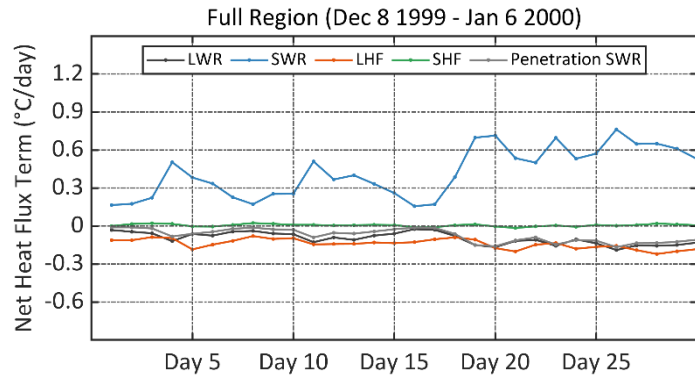
Dec 8 1999 - Jan 6 2000

Mixed Layer Heat Budget (Dec 8 1999 - Jan 6 2000)



# Mixed Layer Heat Budget

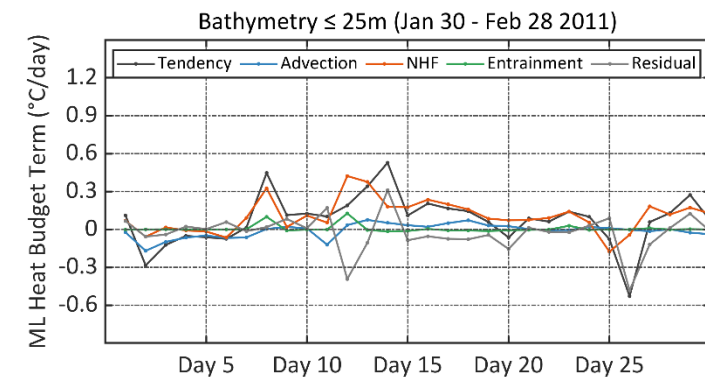
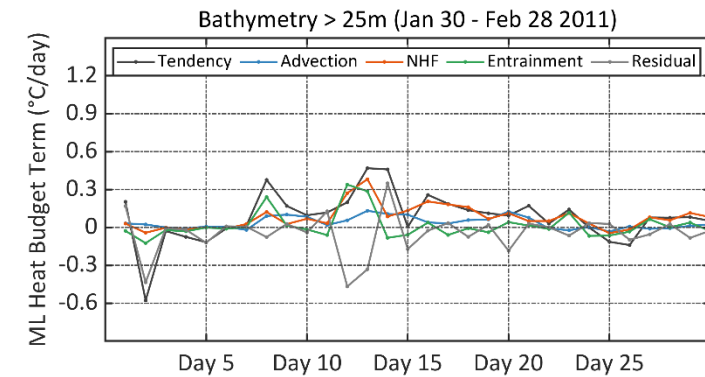
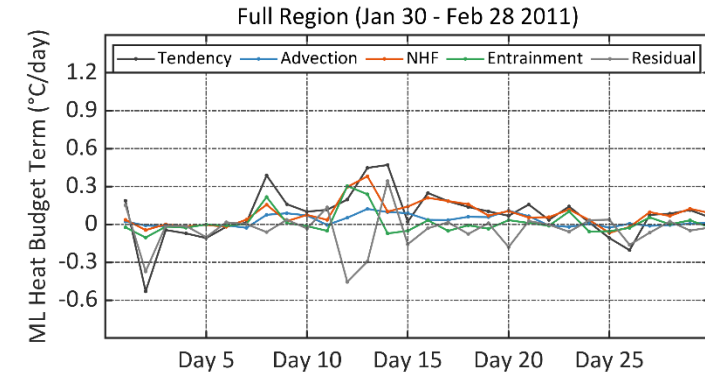
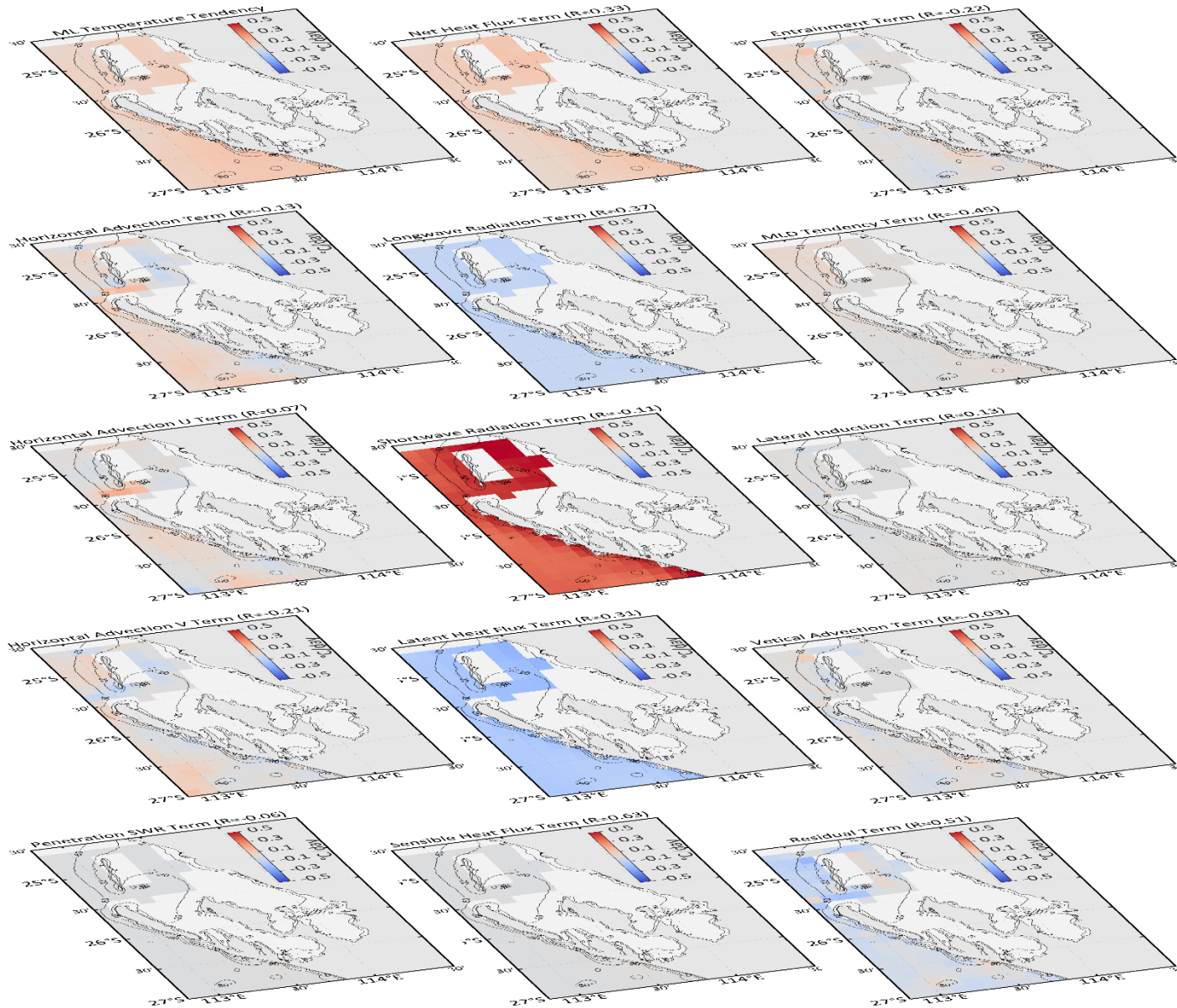
Dec 8 1999 - Jan 6 2000



# Mixed Layer Heat Budget

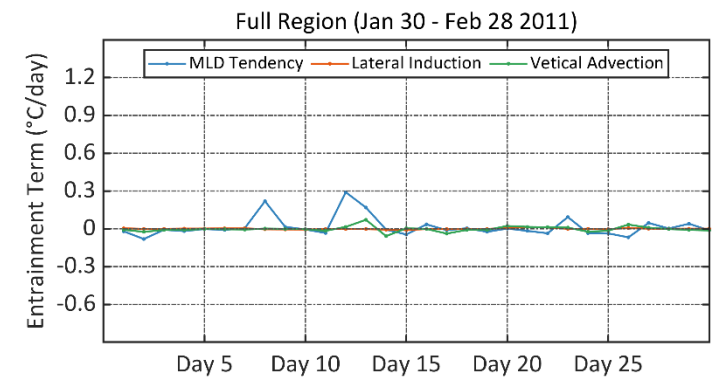
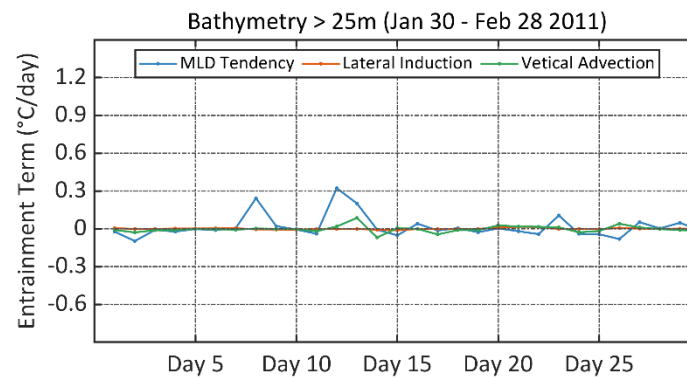
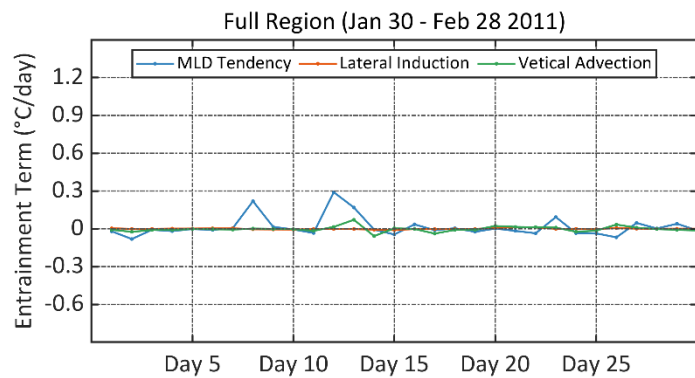
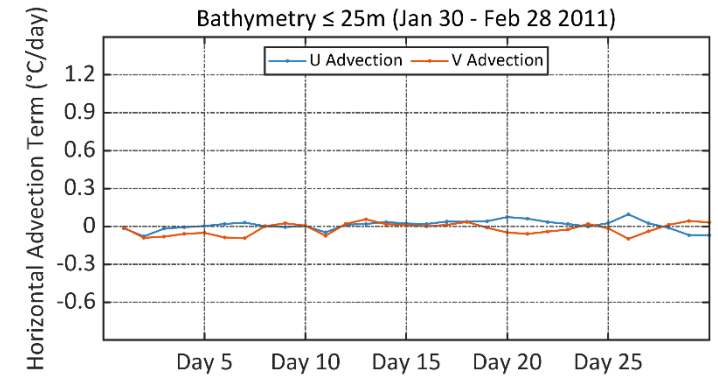
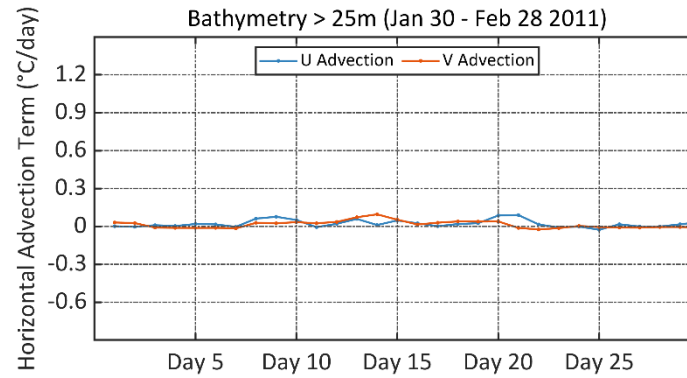
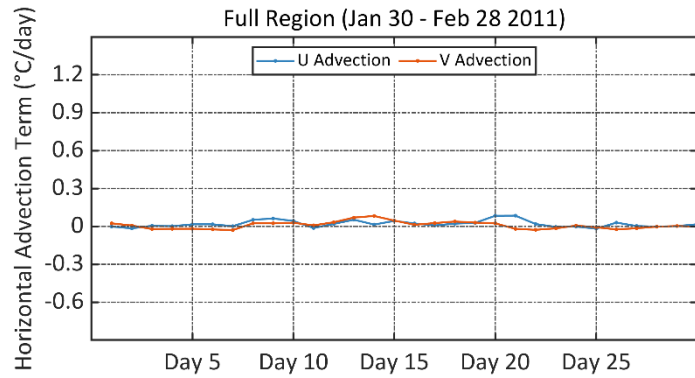
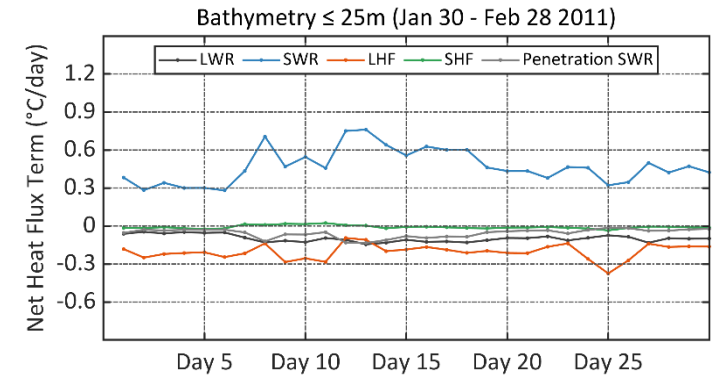
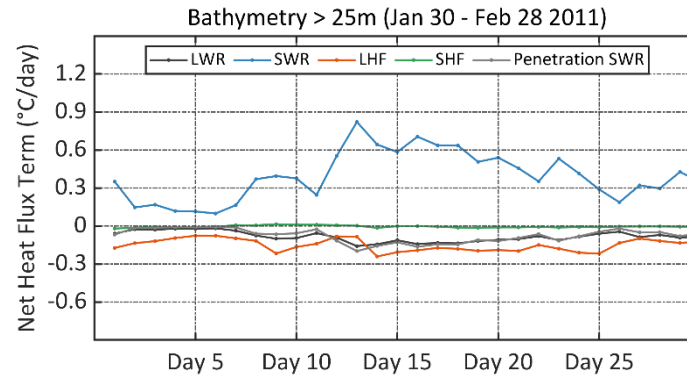
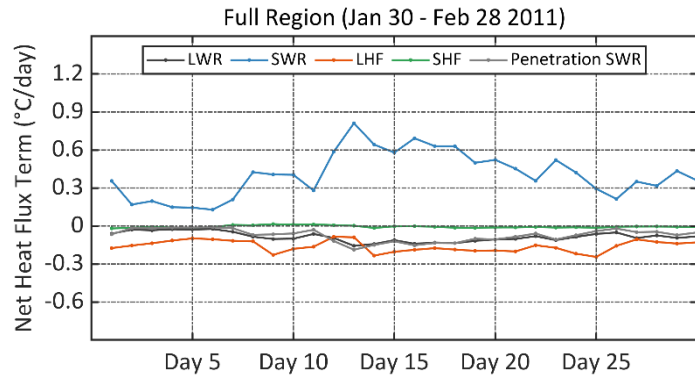
Jan30 - Feb 28 2011

Mixed Layer Heat Budget (Jan 30 - Feb 28 2011)



# Mixed Layer Heat Budget

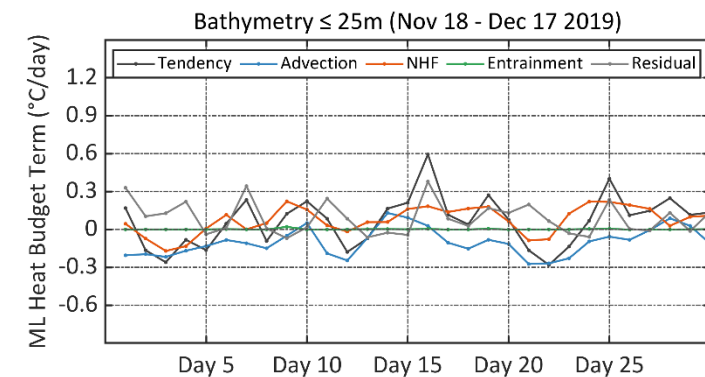
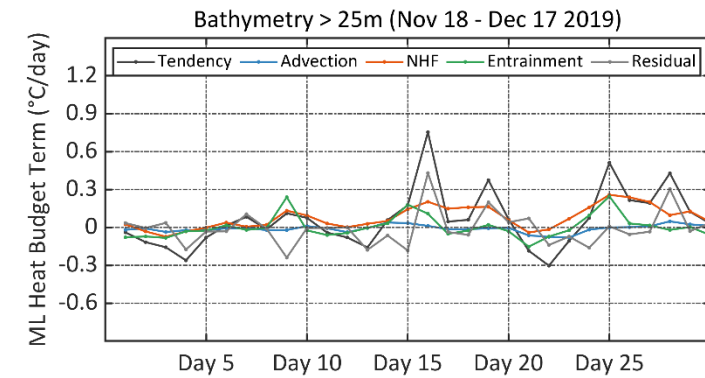
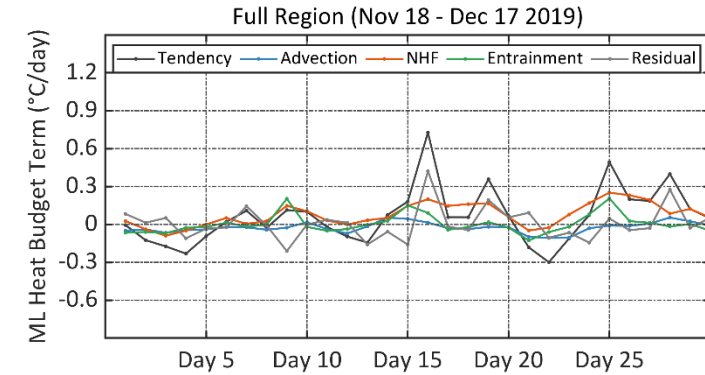
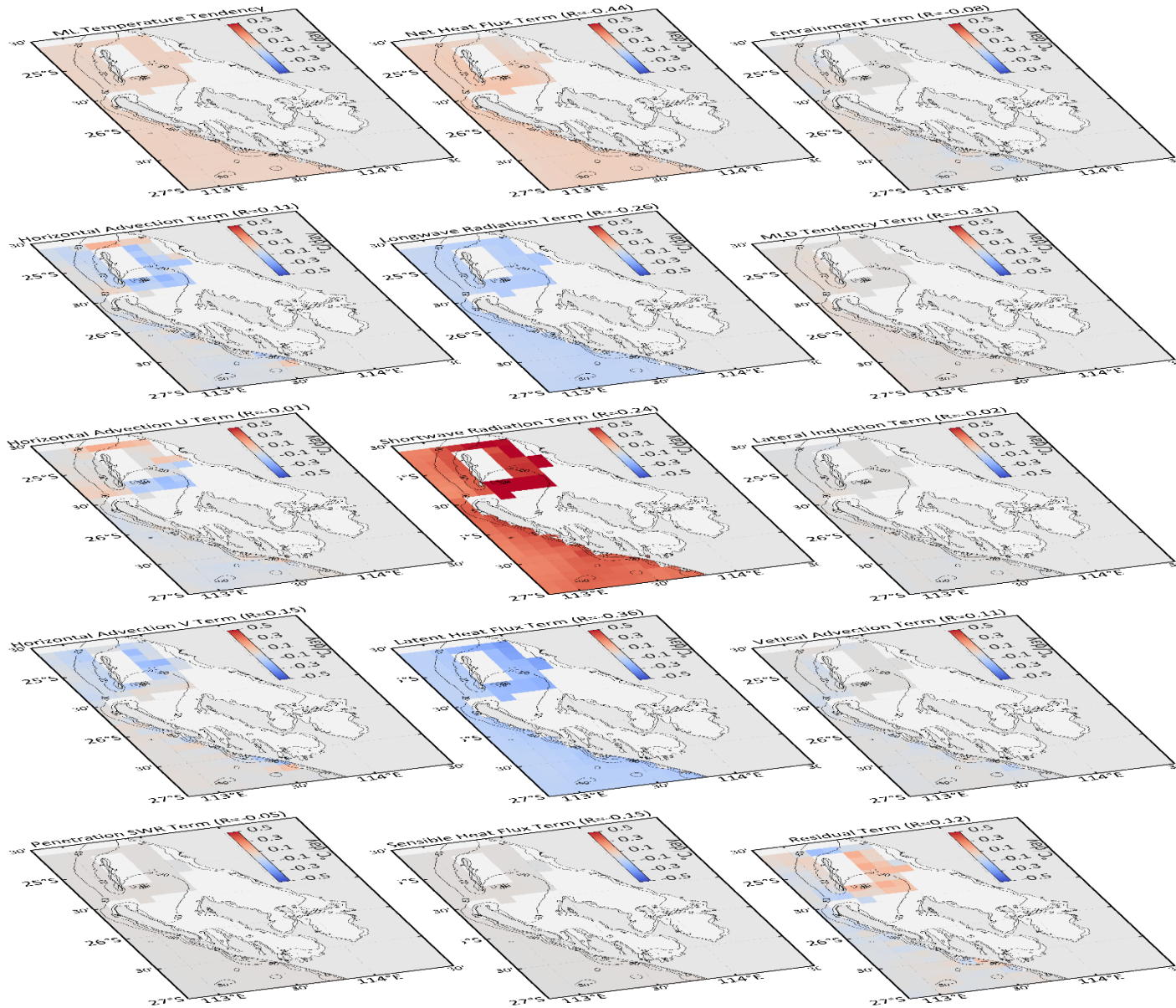
Jan30 - Feb 28 2011



# Mixed Layer Heat Budget

Nov 18 - Dec 17 2019

Mixed Layer Heat Budget (Nov 18 - Dec 17 2019)



# Mixed Layer Heat Budget

Dec 8 1999 - Jan 6 2000

