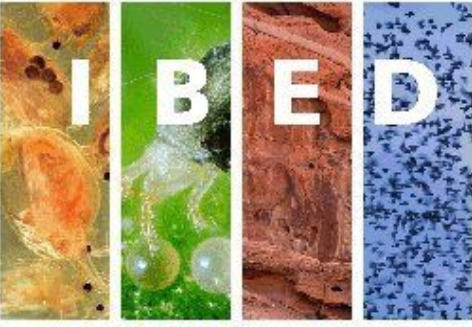


Radar Aeroecology in the cloud. A Virtual Lab for continental scale Aeroecological analysis

B. Wijers^{1,2} (b.c.wijers@uva.nl), G. Pelouze^{2,3}, S. Koulouzis^{2,3}, K. Greuell^{2,3}, Z. Zhao^{2,3}



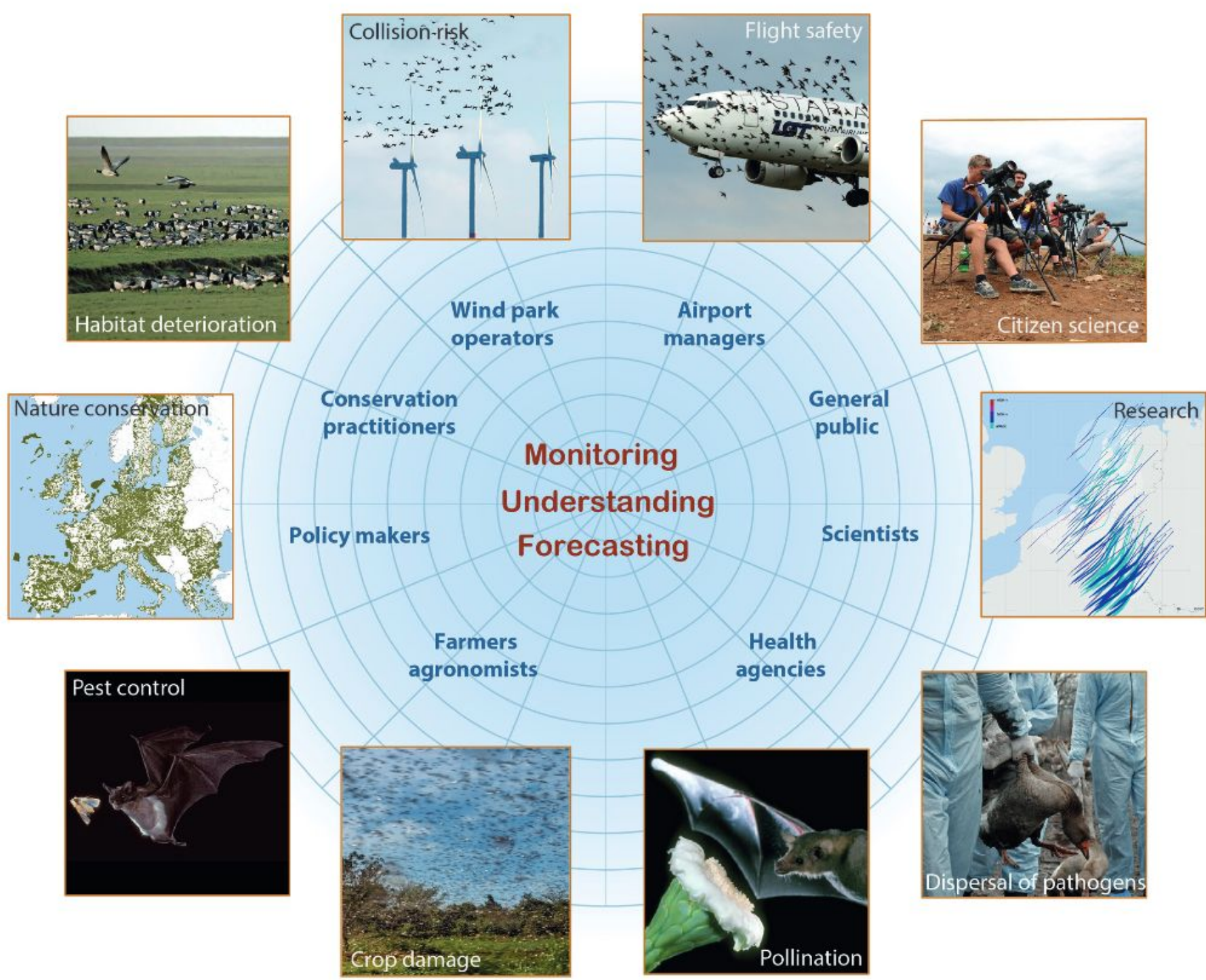
¹ Institute for Biodiversity and Ecosystem Dynamics, University of Amsterdam, Amsterdam, The Netherlands
² LifeWatch ERIC, Virtual Lab & Innovation Center (VLIIC), Amsterdam, The Netherlands
³ Multiscale Networked Systems, University of Amsterdam, Amsterdam, The Netherlands



Aeroecology conflicts with Infrastructure



Understand underlying processes



Monitoring

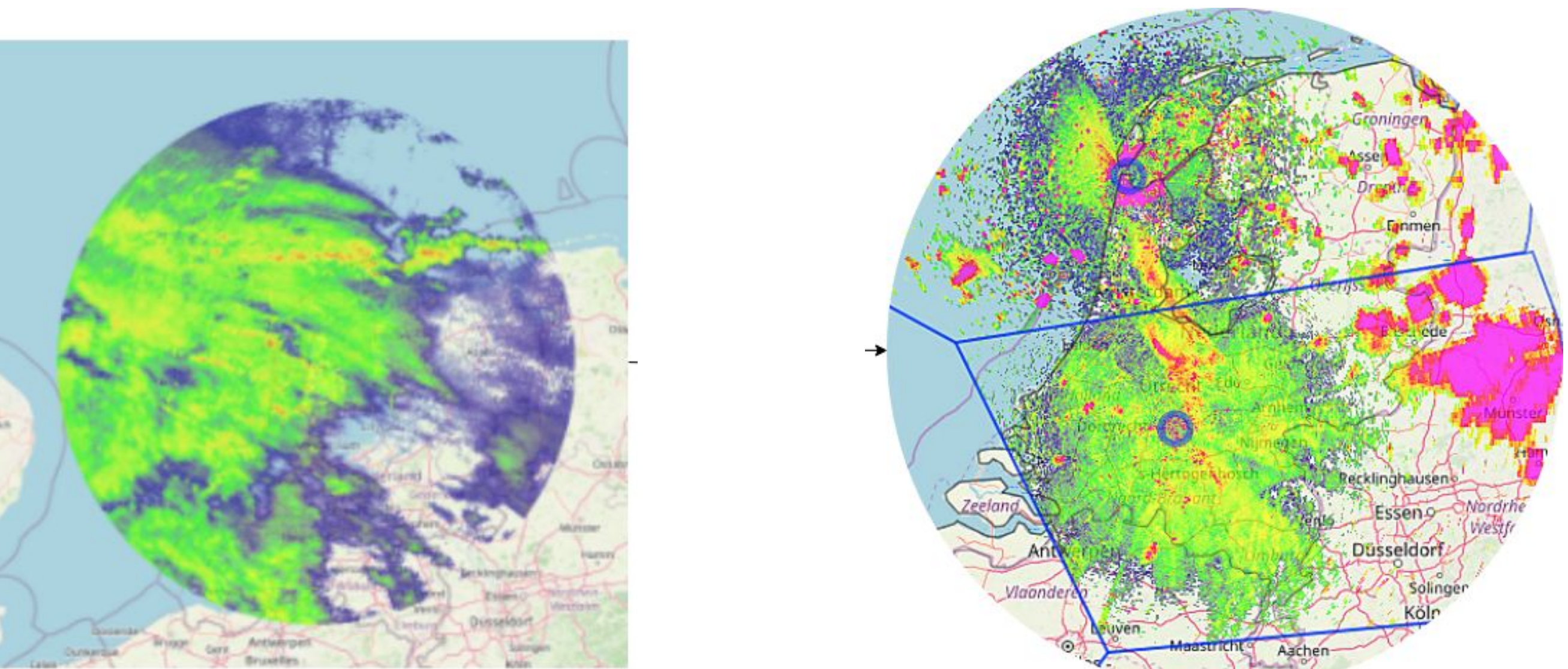


Meteorological Weather Radars continuously monitor the sky. They capture information that can be used for Aeroecological research

Collect and Process

Migration routes cross multiple national borders, requiring harmonization of datasets

Multi temporal data is required to identify migration patterns



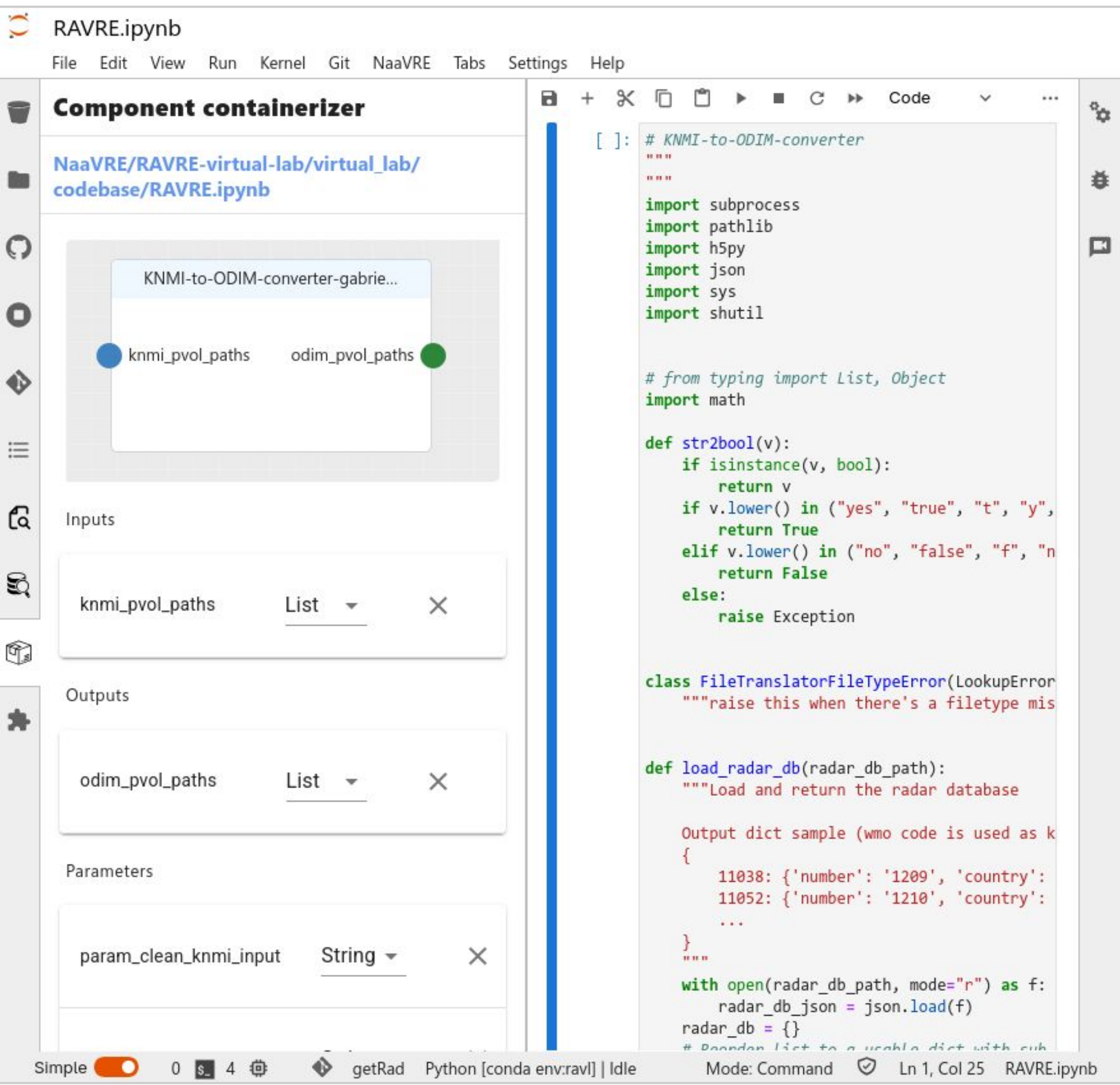
Infrastructure challenges



Large volumes of data are required for identification of migration patterns. This requires significant infrastructure to store, process and access data.

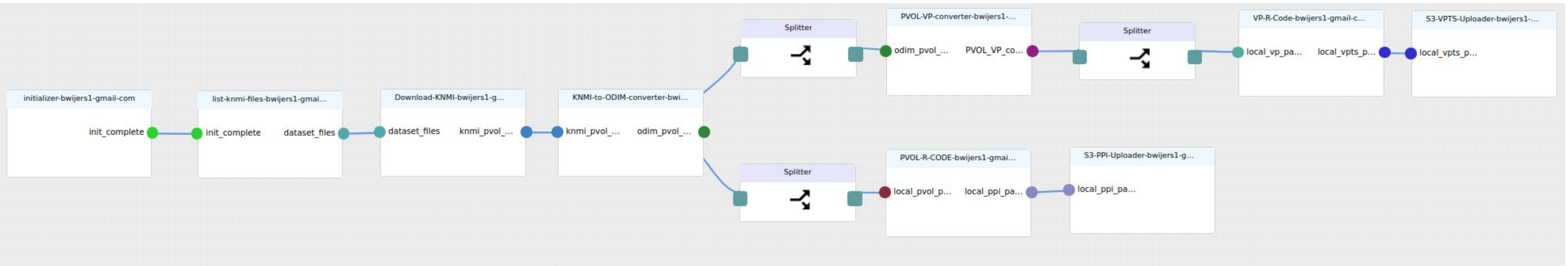
Radar Aeroecology Virtual Lab (RAVL)

Containerize



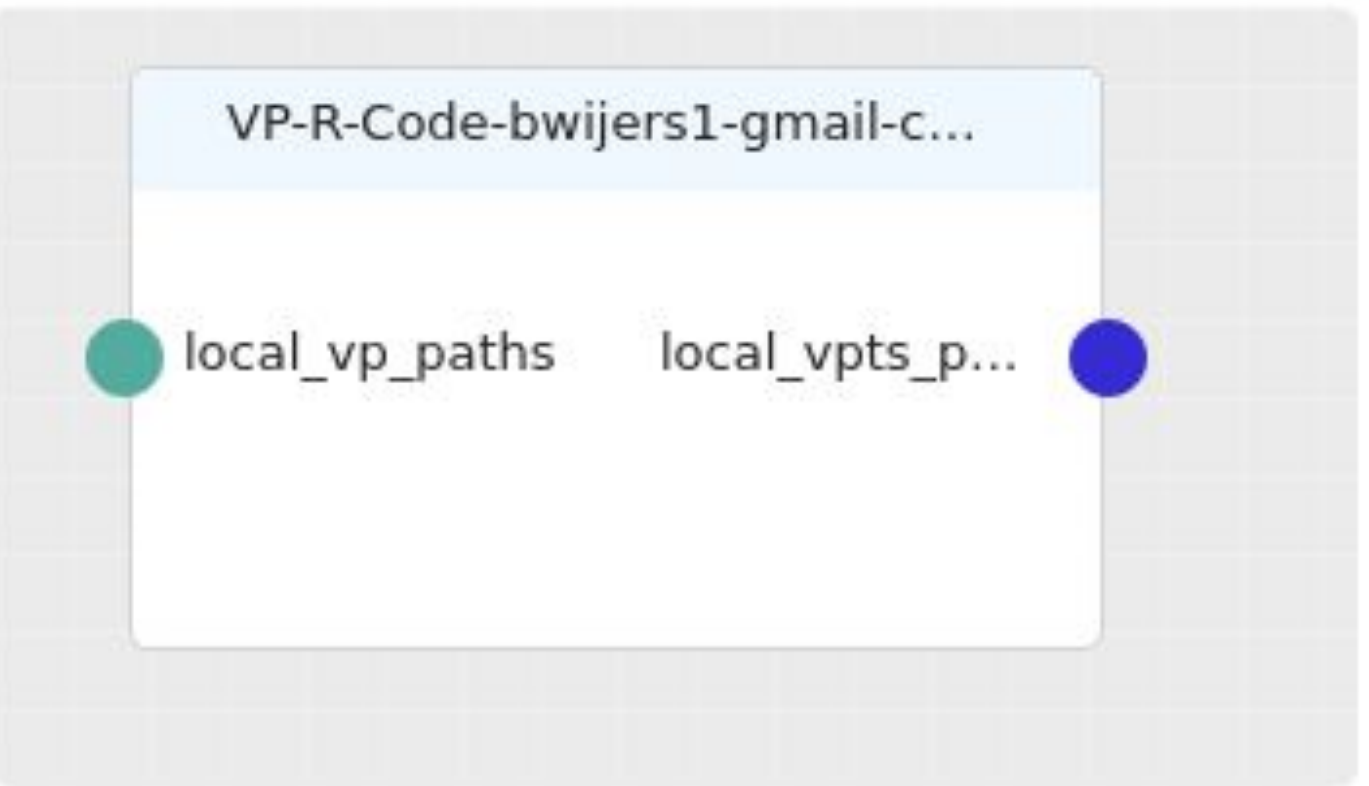
<https://naavre.net>

Build



Explore Cell Catalogs

- Catalog
- Visualize-PVOL-test-bwijers1-gmail-com
- Visualize-PVOL-bwijers1-gmail-com
- PVOL-Visualize-bwijers1-gmail-com
- PVOL-R-CODE-bwijers1-gmail-com
- S3-PPI-Uploader-bwijers1-gmail-com
- S3-VPTS-Uploader-bwijers1-gmail-com
- VP-R-Code-bwijers1-gmail-com



local_vp_paths	input	list
local_vpts_paths	output	list

Parameters

Close

Wind op Land



Submit

Execute Workflow

param_upload_results

True

secret_key_knmi_api

.....

secret_minio_access_key

.....

secret_minio_secret_key

.....

EXECUTE

Close

Share

