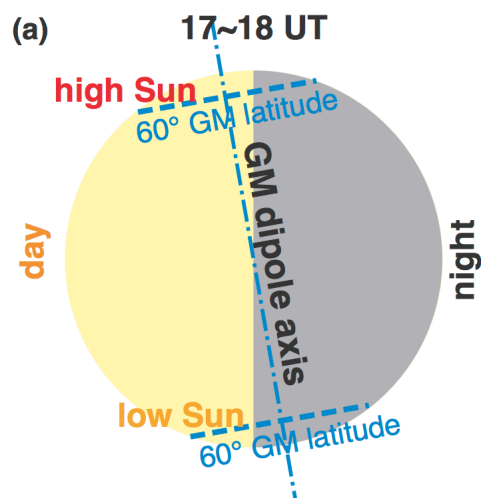




Yamauchi et al:
Unusually large positive dB
near noon on 11 May, 2024

Fourth time **Kp=9** at 9-15 UT in
past >90 years



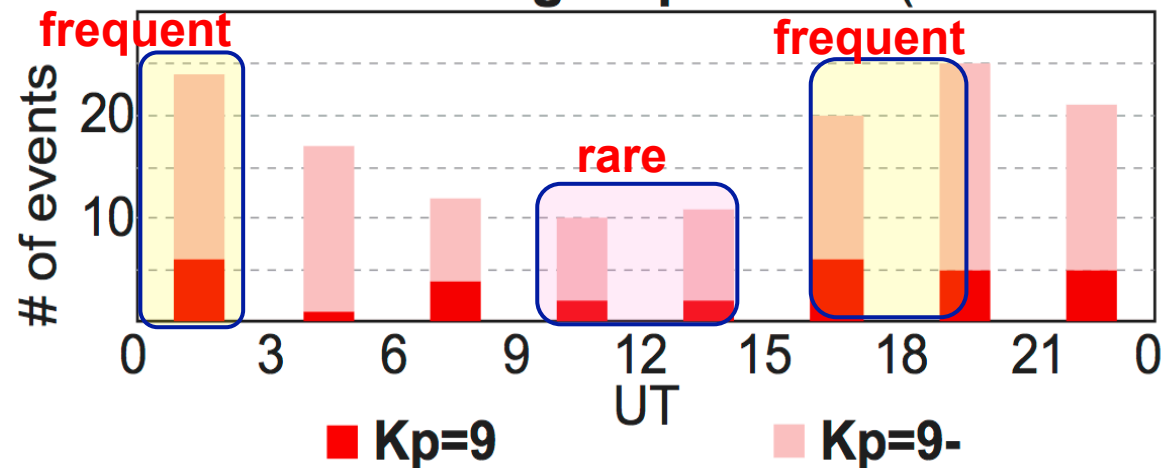
First time **AU > +1300 nT** at
08-15 MLT in past >40 years

→ Some G4 geomagnetic storms at
09-15 UT might be as severe as G5
storms at 18-03 UT.

Acknowledgment: We used geomagnetic data found at
database of SuperMAG, INTERMAGNET, and WDC-C2 in
Kyoto including scanned microfilms. We thank all the
contributing observatories. We also used AE and Kp database.

Virtual Poster: VPS27 (EGU25-12948)

UT distribution of high-Kp events (1932-2024)



UT distribution of high-AU events (1978-2019)

