

Investigating the Role of Chaotic Dynamics in Shaping River Channel Patterns and Morphologies: The Case Of he Ankobra River, Ghana. (Julia Quaicoe, University of Cape Coast, Ghana)

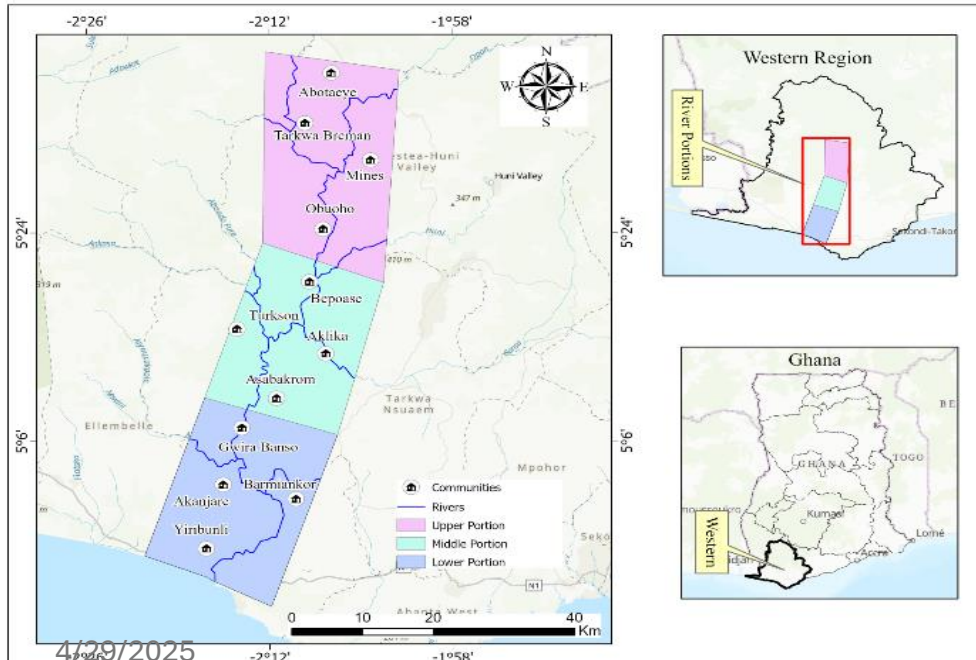
Overview

Given the evidence suggesting that river morpho-dynamics and evolution can exhibit features of non-linearity and chaos, there is a need to investigate how these dynamics shape the observed patterns and morphologies in real river systems.

Objectives

- To quantify channel width and sinuosity changes over a 40-year study period.
- To analyze the variations in morphological features across the various sections of the River.
- To assess the potential influence of land use and land cover change as a driver of chaotic dynamics in the Ankobra River's channel evolution.

Study area (Ankobra River)



Methodology Flow Chart

