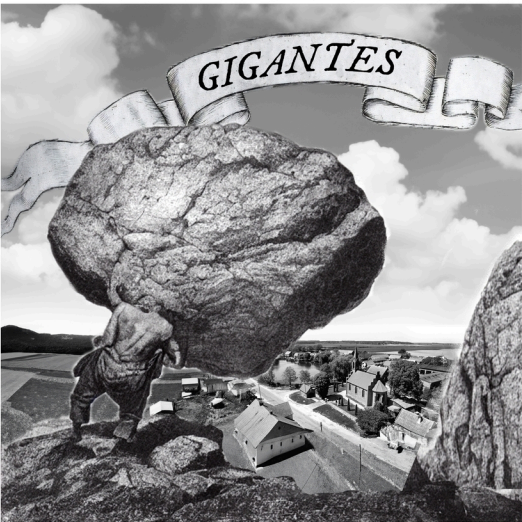




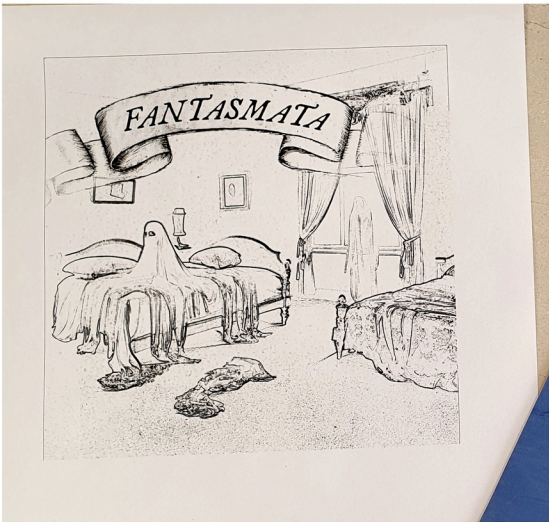
1a. Concepts made with base Stable Diffusion AI model.



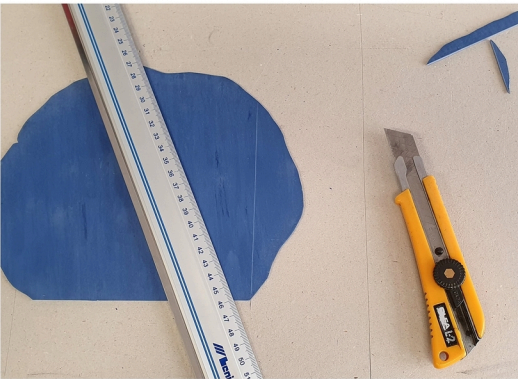
1b. Montage with photographic materials.
This image also serves as a visual guide during carving the linocut matrix.



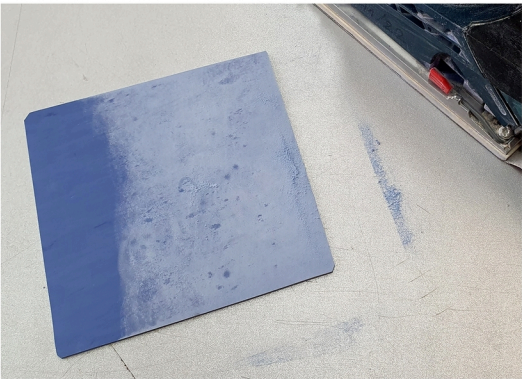
1c. Graphized image ready for printing in 1:1 scale with a toner printer.



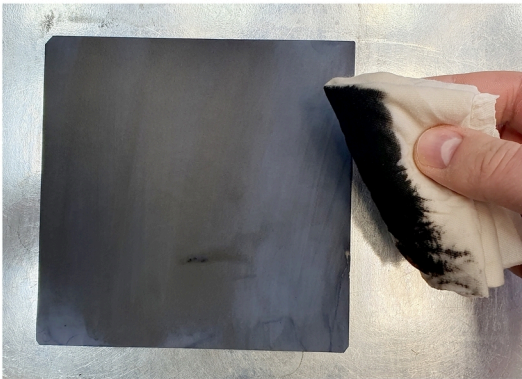
1d. Printed pattern for "Fantasmata".



1e. Preparation of the linocut blank. It is important to maintain the same physical size and aspect ratio as previously printed pattern.



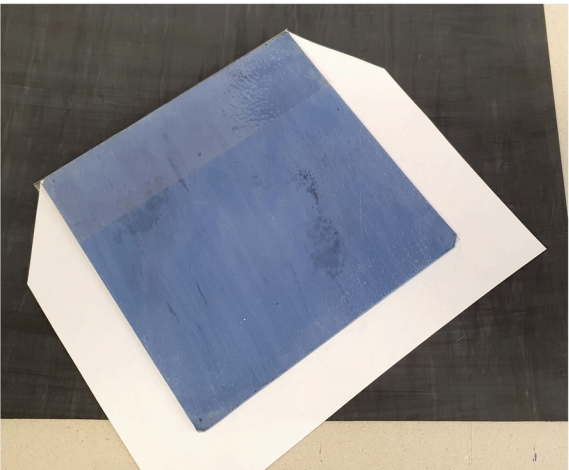
1h. Sanding the linocut blank will provide smooth and plane surface for printing.



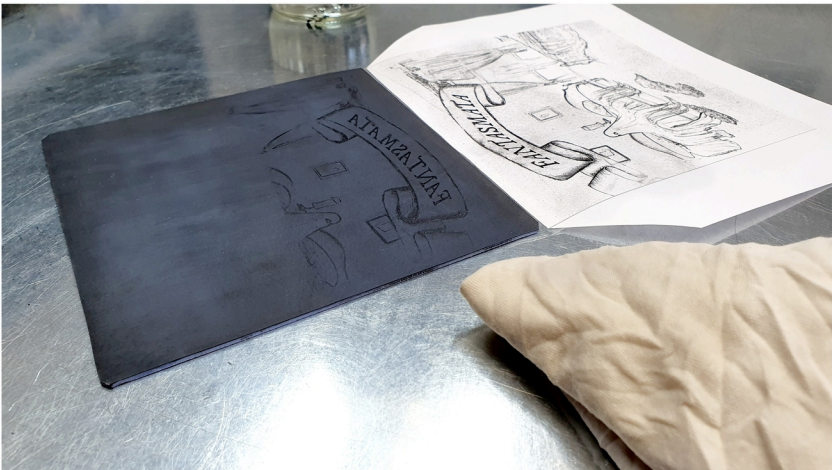
1g. Covering the blank with a black ink will help visualize the final image during carving.



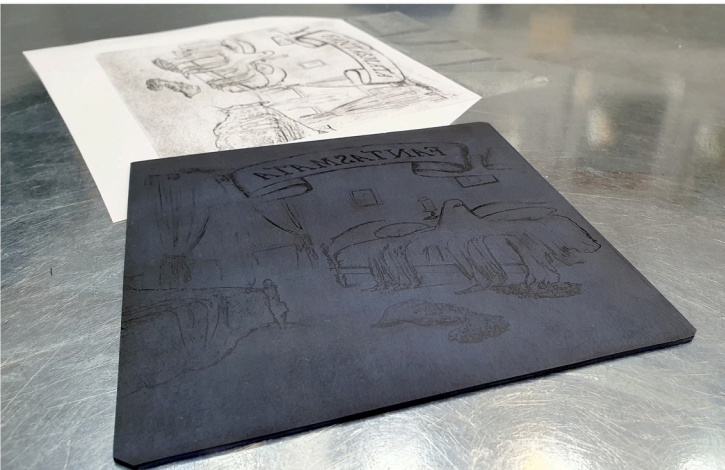
1h. Printer pattern and sanded side of a blank are sandwiched face to face. This will allow for the toner print to be transferred onto the linocut blank.



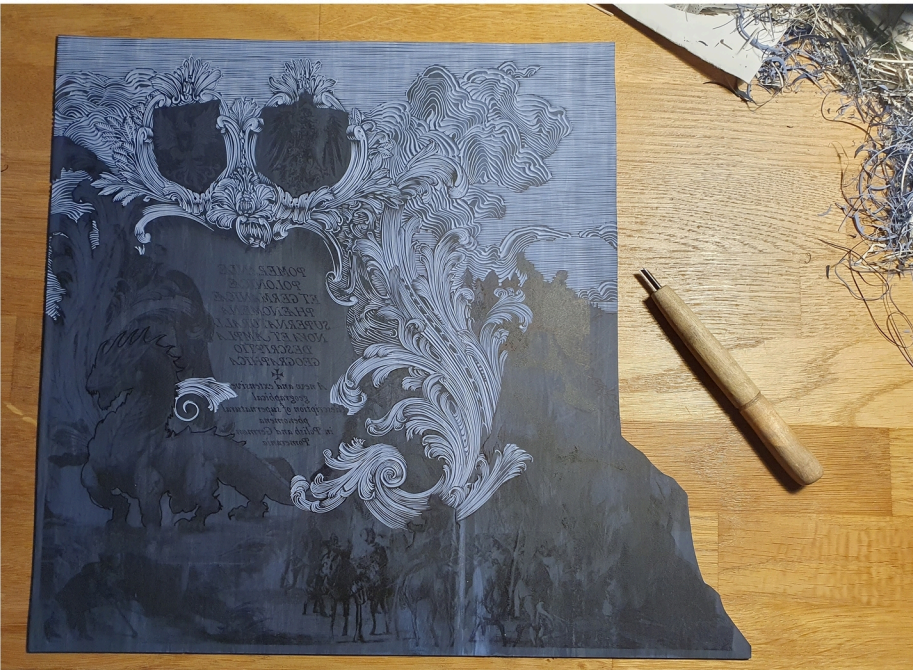
1i. Print and the linocut blank are joined on one side with a tape to maintain their relative positions.



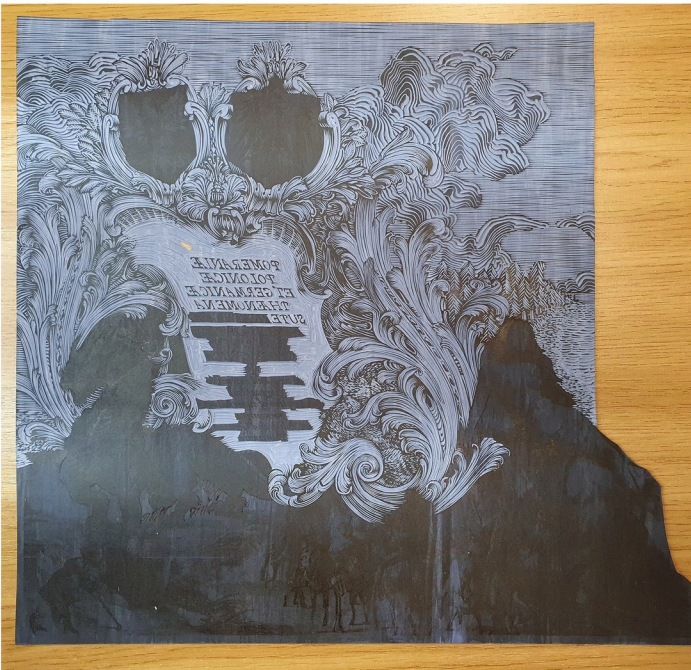
1j. Transferring print is done with pressing the print onto the lino with a cloth tampon soaked with acetone which can dissolve toner.



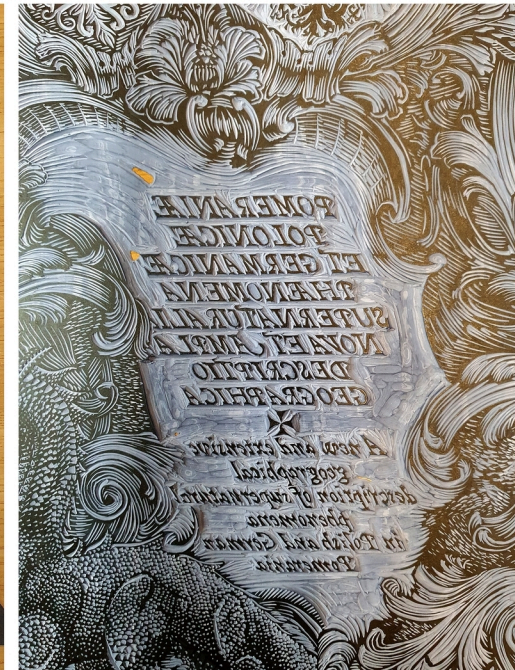
1k. Fully transferred pattern.



2a. Cartouche during carving. Both printed pattern and carved areas are easily visible. Some parts of the pattern are manually refined with a pen.



2b. Carving the text parts of the cartouche.



2c. Closeup of the finished text plaque.



2d. Finished eleven matrices of the map legend. And the final one - "Venatores Agresti" during carving.



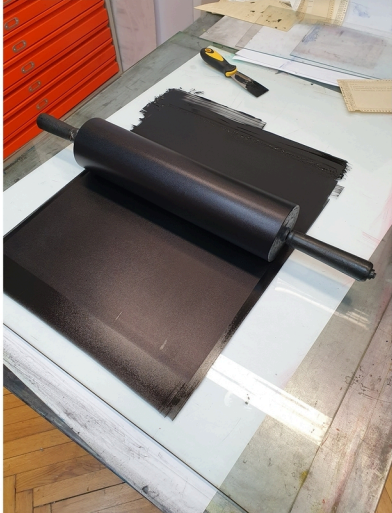
2e. Closeup of the finished matrices of the "Dracones" and "Gigantes".



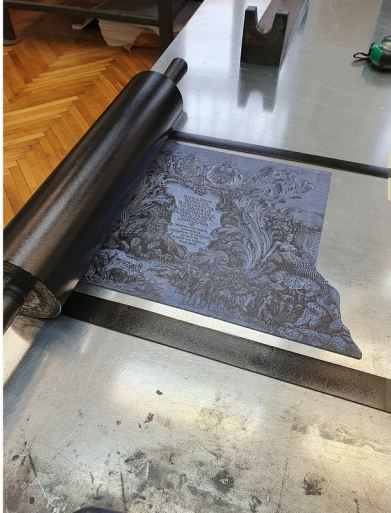
3a. Finished matrix of the map title cartouche.



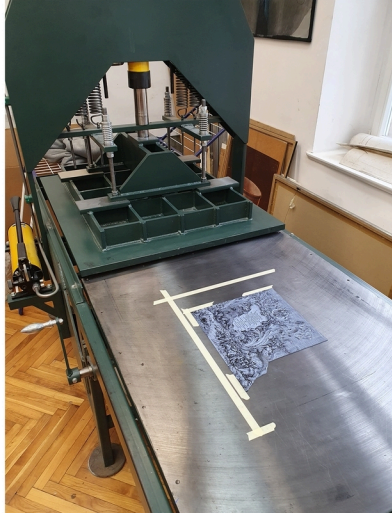
3b. Coat of Arms' details.



3c. Preparation of the printing ink.



3d. Covering printing matrix with ink.



3e. The matrix placed on a printing press table in specified position relative to a paper dimensions.



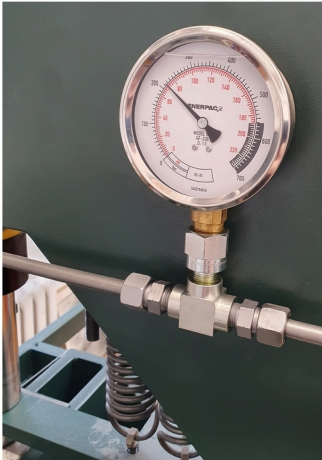
3f. Soaking paper in water will help with the ink adhesion.



3g. Paper is placed on a matrix manually. Tape markers provide reference points.



3h. Table is rolled between press plates.



3i. Operating pressure for the press is 220 bar.



3j, 3k. Finished print removal from the matrix.



3l, 3m. Finished set of 8 prints.

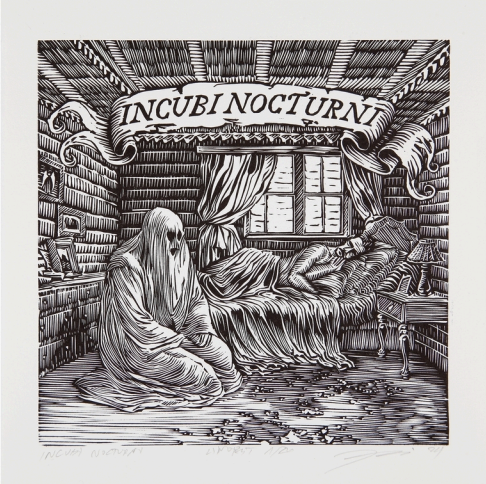




4a. Finished 12 prints of supernatural beings that will serve as a map legend.



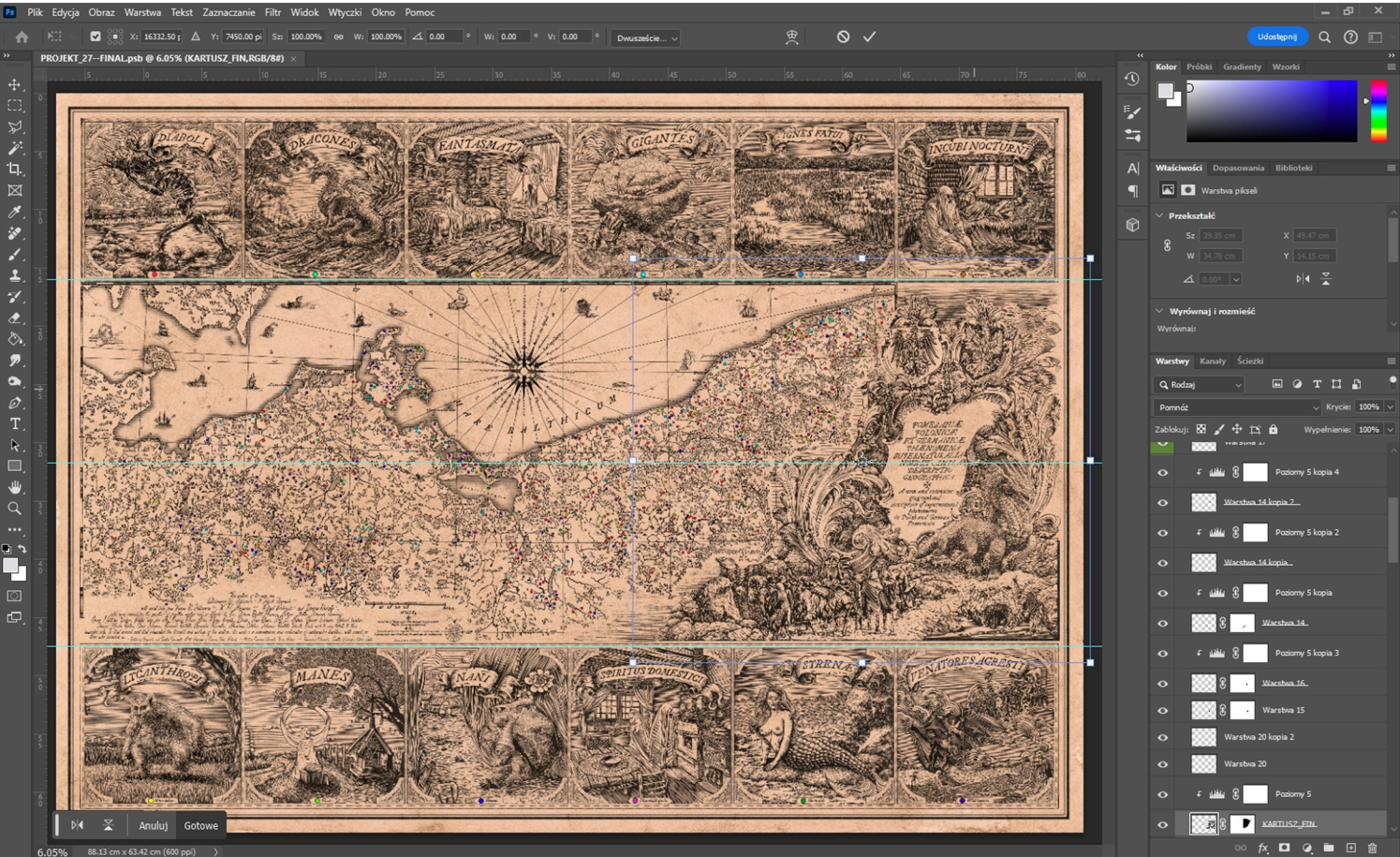
4b. The prints after drying are photographed.



4c. Signed and photographed "Incubi Nocturni" print.



4d. Prints of supernatural being were printed with smaller manual press which gives finer control over the printing pressure.



4e. Digitalized prints are composed with the main map and the rest of the decorative elements.